

18911 & 19015 NORTH CREEK PARKWAY  
BOTHELL, WASHINGTON

BRODERICK  
• GROUP •



# PLAZA @ NORTH CREEK

5,279 – 120,789 SF AVAILABLE



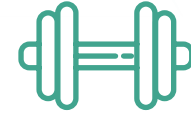


# PLAZA @ NORTH CREEK

## PROPERTY HIGHLIGHTS



CLASS A OFFICE / TECH  
CAMPUS WITH SECURITY /  
CARD KEY ACCESS



NEW TENANT AMENITY EXERCISE  
FACILITY, SHOWERS, LOCKERS, AND  
BIKE STORAGE



RESTAURANTS, DELICATESSEN,  
JOGGING & WALKING TRAILS,  
& NORTHSORE YMCA WITHIN  
WALKING DISTANCE



4-5/1,000 SF PARKING RATIO;  
EXCELLENT ACCESS & FREEWAY  
VISIBILITY (I-405 & SR-522) WITH  
ELECTRIC VEHICLE CHARGING STATIONS



HOTELS WITHIN WALKING  
DISTANCE (WYNDHAM GARDEN  
HOTEL & RESIDENCE INN)



FIBER SERVICES ARE PROVIDED BY  
FRONTIER FIOS. CABLE PROVIDED  
BY COMCAST. ADDITIONAL TELECOM  
SERVICES PROVIDED BY VERIZON,  
AT&T & ACCESS TELEPHONE  
SOLUTIONS, INC.



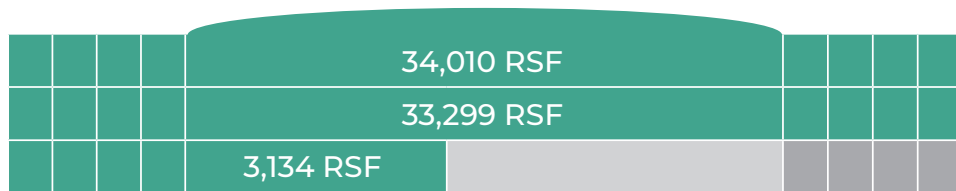
# PLAZA @ NORTH CREEK

## AVAILABLE SPACE

SPACE	SIZE	AVAILABLE	NOTES
<b>EAST BUILDING</b> • 18911 NORTH CREEK PARKWAY, BOTHELL, WA			
Suite 100	16,120 RSF	NOW	Furnished
Floor 2	5,279 – 34,226 RSF	NOW	Full Floor Opportunity. Divisible to 5,279 SF.
FLOORS 1 & 2 CAN BE COMBINED FOR A TOTAL OF <b>50,346 RSF</b>			
<b>NORTH BUILDING</b> • 19015 NORTH CREEK PARKWAY, BOTHELL, WA			
Suite 107	3,134 RSF	4/1/2025	
Suite 200	33,299 RSF	4/1/2025	
Suite 300	34,010 RSF	4/1/2025	
FLOORS 1-3 CAN BE COMBINED FOR A TOTAL OF <b>70,443 RSF</b>			
<b>TOTAL SQUARE FOOTAGE AVAILABLE: 120,789 RSF</b>			

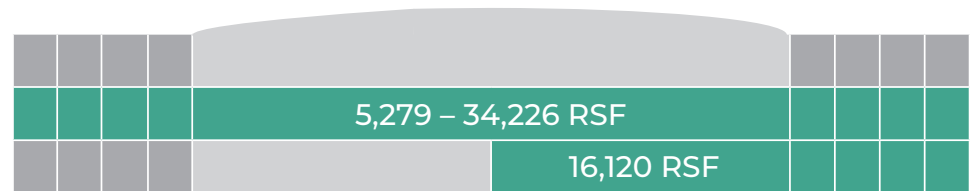
# PLAZA @ NORTH CREEK

## NORTH BUILDING



70,443 RSF TOTAL AVAILABLE

## EAST BUILDING



50,346 RSF TOTAL AVAILABLE

# PLAZA @ NORTH CREEK

NORTH BUILDING

19015 NORTH CREEK PKWY  
BOTHELL, WA



**TYLER SLONE**

425.274.4281

slone@broderickgroup.com

**PAUL JERUE**

425.646.5223

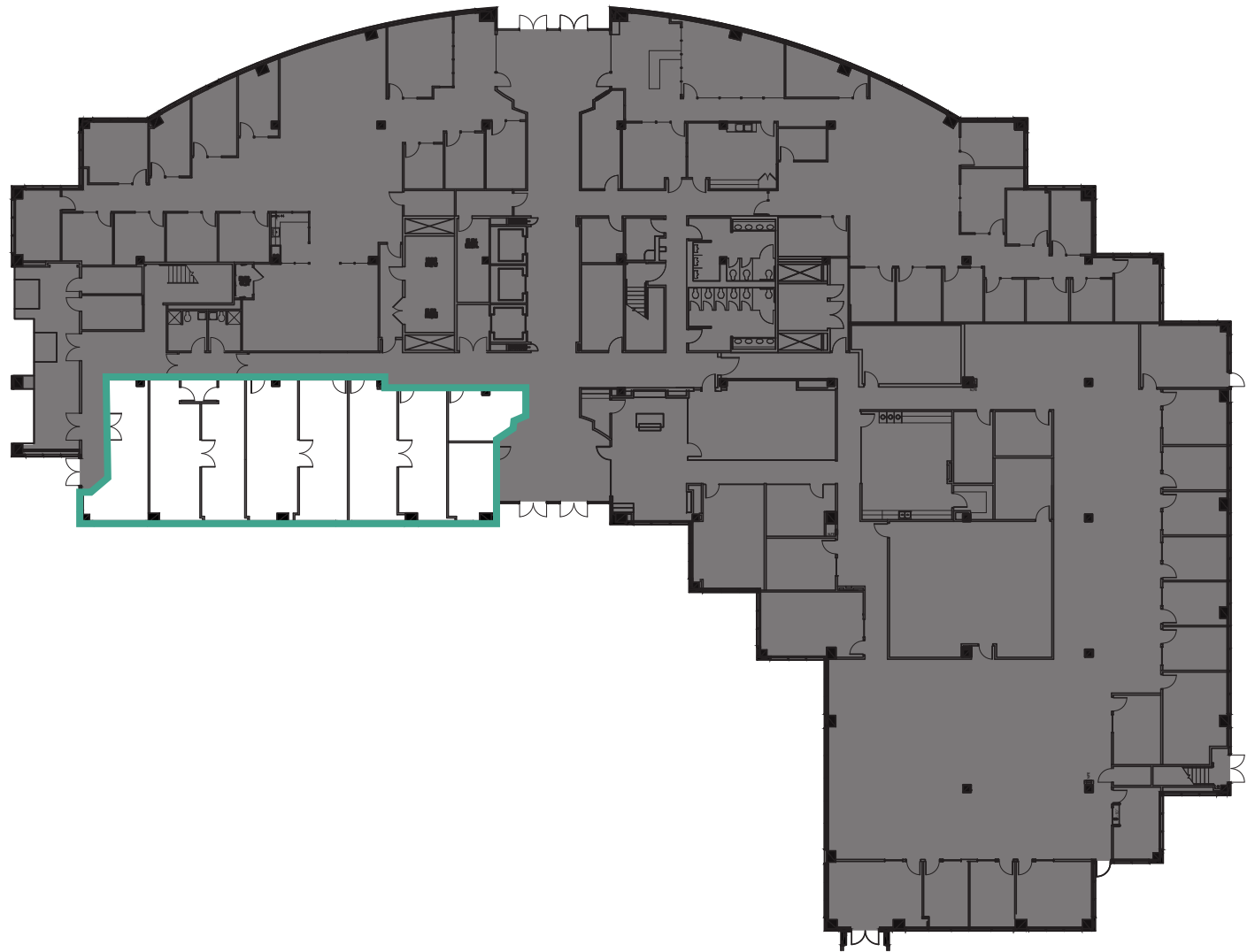
jerue@broderickgroup.com

**BRODERICK**  
• GROUP •



# FLOOR PLAN

SUITE 107 | 3,134 RSF | AVAILABLE 4/1/2025





# PLAZA @ NORTH CREEK

NORTH BUILDING

19015 NORTH CREEK PKWY  
BOTHELL, WA



# FLOOR PLAN

SUITE 200 | 33,299 RSF | AVAILABLE 4/1/2025



**CLICK TO VIEW  
VIRTUAL TOUR**



**TYLER SLONE**

425.274.4281

slone@broderickgroup.com

**PAUL JERUE**

425.646.5223

jerue@broderickgroup.com

# PLAZA @ NORTH CREEK

NORTH BUILDING

19015 NORTH CREEK PKWY  
BOTHELL, WA



**TYLER SLONE**

425.274.4281

slone@broderickgroup.com

**PAUL JERUE**

425.646.5223

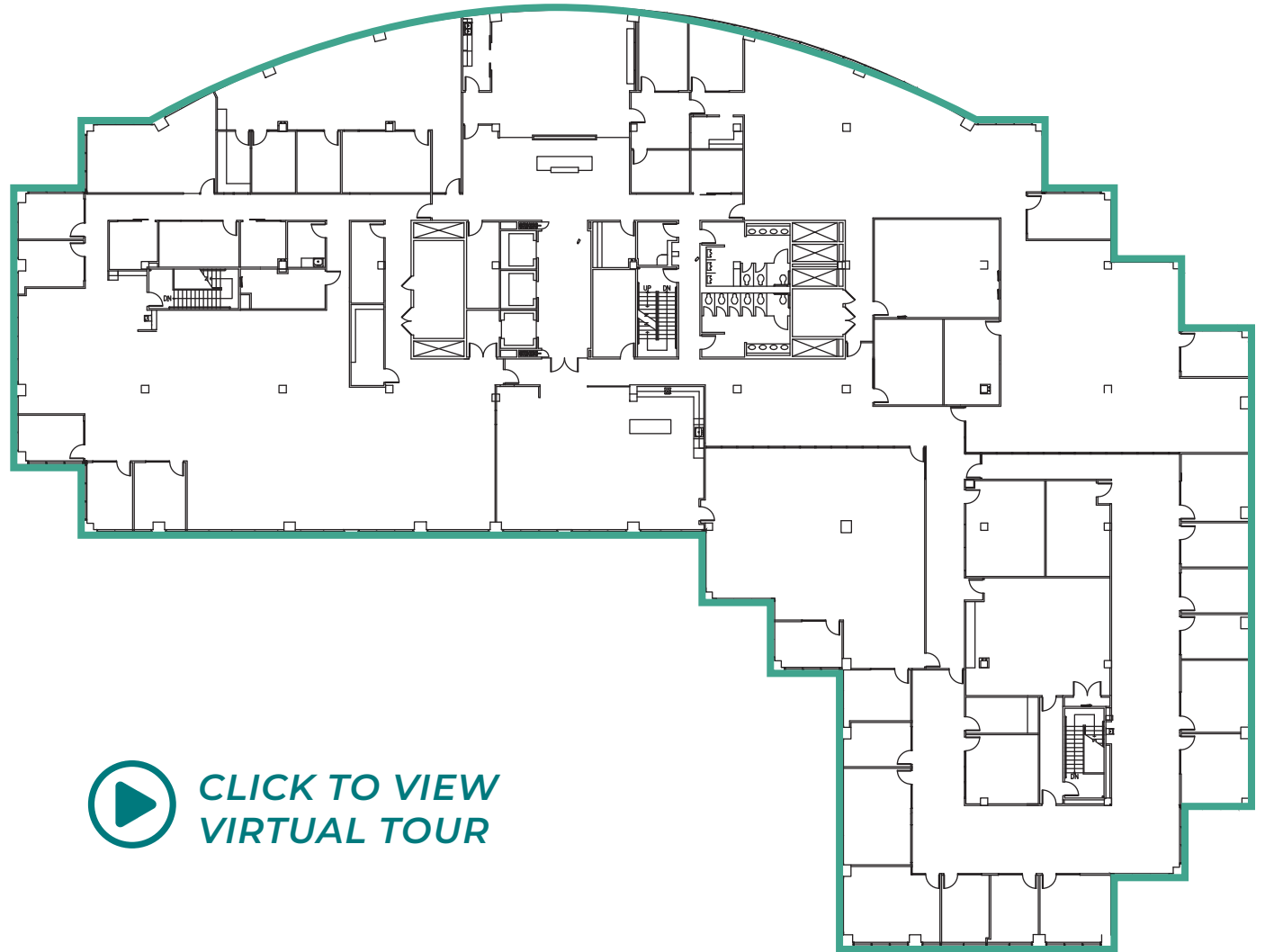
jerue@broderickgroup.com

**BRODERICK**  
• GROUP •



# FLOOR PLAN

SUITE 300 | 34,010 RSF | AVAILABLE 4/1/2025



**CLICK TO VIEW  
VIRTUAL TOUR**

# PLAZA @ NORTH CREEK

EAST BUILDING

18911 NORTH CREEK PKWY  
BOTHELL, WA

**TYLER SLONE**

425.274.4281

slone@broderickgroup.com

**PAUL JERUE**

425.646.5223

jerue@broderickgroup.com

**BRODERICK**  
• GROUP •

# FLOOR PLAN

SUITE 100 | 16,120 RSF | AVAILABLE NOW  
FURNISHED



*CLICK TO VIEW  
VIRTUAL TOUR*





# PLAZA @ NORTH CREEK

EAST BUILDING

18911 NORTH CREEK PKWY  
BOTHELL, WA

TYLER SLONE

425.274.4281

slone@broderickgroup.com

PAUL JERUE

425.646.5223

jerue@broderickgroup.com

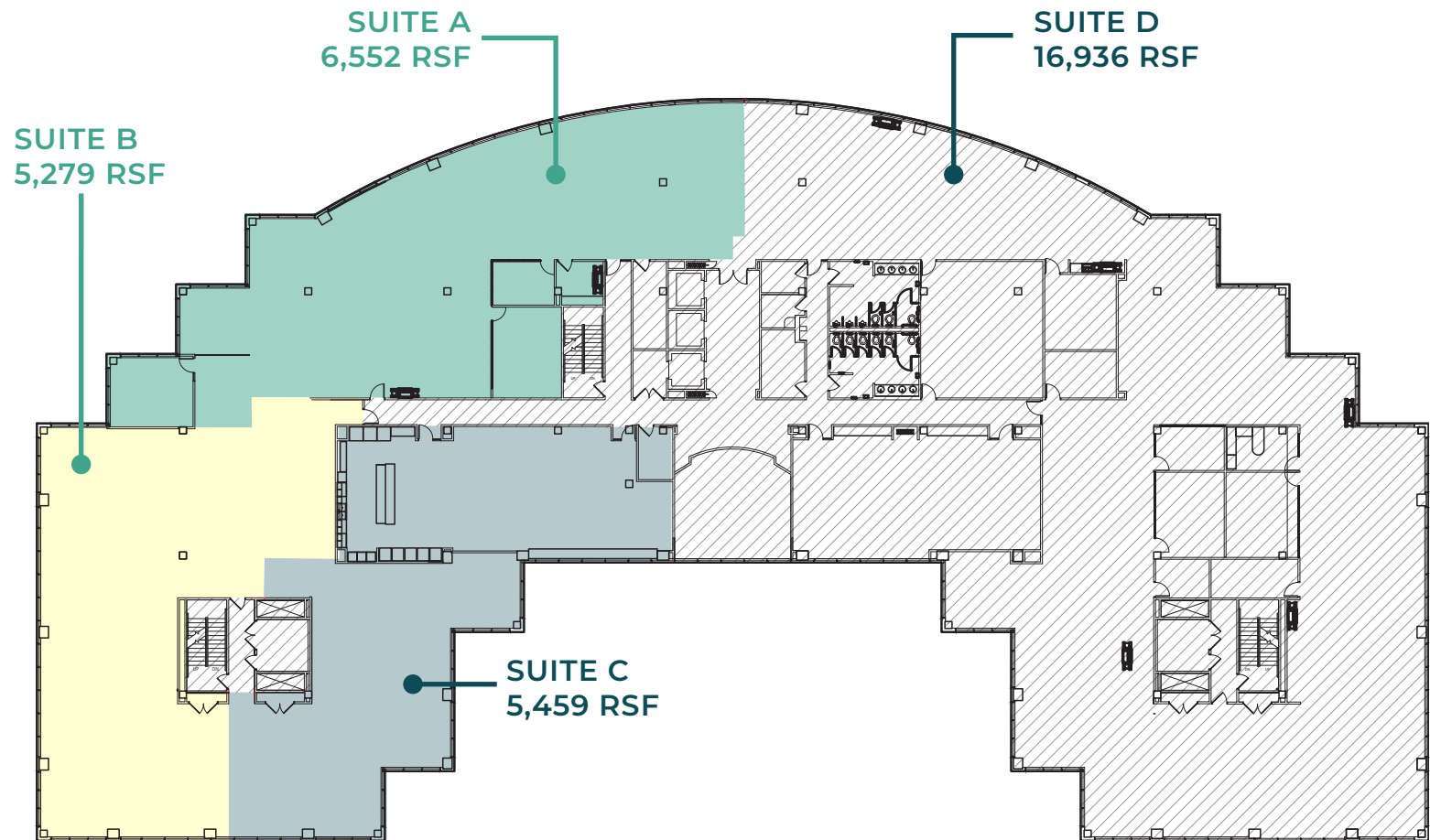
**BRODERICK**  
• GROUP •

# FLOOR PLAN

FLOOR 2 | 5,279 – 34,226 RSF | AVAILABLE NOW



CLICK TO VIEW  
VIRTUAL TOUR



# PLAZA @ NORTH CREEK

EAST BUILDING

18911 NORTH CREEK PKWY  
BOTHELL, WA



**TYLER SLONE**

425.274.4281

slone@broderickgroup.com

**PAUL JERUE**

425.646.5223

jerue@broderickgroup.com

**BRODERICK**  
• GROUP •

# FLOOR PLAN

FLOOR 2 | 34,226 RSF | AVAILABLE NOW



*CLICK TO VIEW  
VIRTUAL TOUR*

