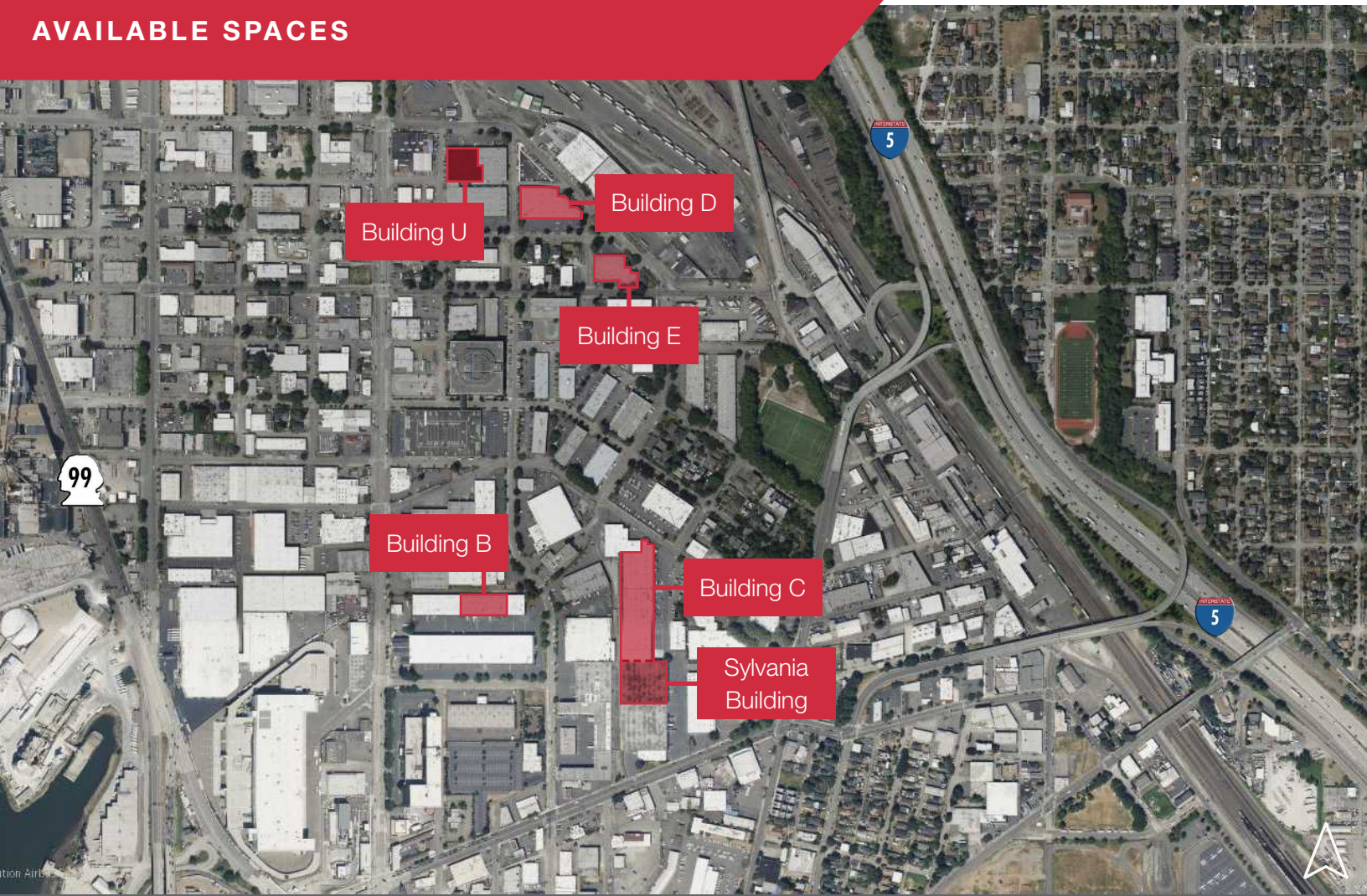


NORTHWEST CORPORATE PARK - SEATTLE

AVAILABLE SPACES



BUILDING	TOTAL SF (OFFICE SF)	LOADING DOORS	CLEAR HEIGHT	FLYER
B	20,100 SF (1,637 SF)	6 DH	24'	Download
C	83,500 SF (9,073 SF)	30 DH	22'	Download
SYLVANIA BLDG	46,125 SF (1,800 SF)	10 DH	20'	Download
C BLDG AND SYLVANIA BLDG	129,625 SF (10,873 SF)	40 DH	20'-22'	Download
D	33,689 SF (3,000 SF)	10 DH	22'	Download
E (SUITE 650)	5,760 SF (1,598 SF)	1 DH, 1 ramp	22'	Download
E (SUITE 654)	6,000 SF (2,047 SF)	3 DH	22'	Download
U	29,753 SF (782 SF)	7 DH	22'	Download

Exclusively marketed by:

John Vernon
+1 425 586 5638
jvernon@nai-psp.com

Tamir Ohayon
+1 425 586 5627
tohayon@nai-psp.com

Bob Swain, CCIM
+1 425 586 5622
bswain@nai-psp.com



THE INFORMATION CONTAINED HEREIN HAS BEEN GIVEN TO US BY THE OWNER OF THE PROPERTY OR OTHER SOURCES WE DEEM RELIABLE. WE HAVE NO REASON TO DOUBT ITS ACCURACY, BUT WE DO NOT GUARANTEE IT. ALL INFORMATION SHOULD BE VERIFIED PRIOR TO PURCHASE OR LEASE. G:\SHARED DRIVES\ADMIN TEAM\MARKETING\FLYERS\SEATTLE\NW CORPORATE PARK - SEATTLE\SUMMARY FLYER