

FOR LEASE

# FINISHING TRADES INSTITUTE NORTHWEST BUILDING

6770 E MARGINAL WAY S, SEATTLE, WA 98108



*Quality office building, with 3rd floor  
spaces available, 1,350-2,785 SF, multiple  
configurations*

Quality Georgetown office space

1,350 - 2,785 SF available

Elevator served building

\$32.00 PSF/year, full-service

**VARIOUS**

CONFIGURATIONS

This information supplied herein is from sources we deem reliable. It is provided without any representation, warranty, or guarantee, expressed or implied as to its accuracy. Prospective Buyer or Tenant should conduct an independent investigation and verification of all matters deemed to be material, including, but not limited to, statements of income and expenses. Consult your attorney, accountant, or other professional advisor.

SPENCER CLAPP

206.248.7427

spencer.clapp@kidder.com

KIDDER.COM

**km** Kidder  
Mathews

1,350 SF

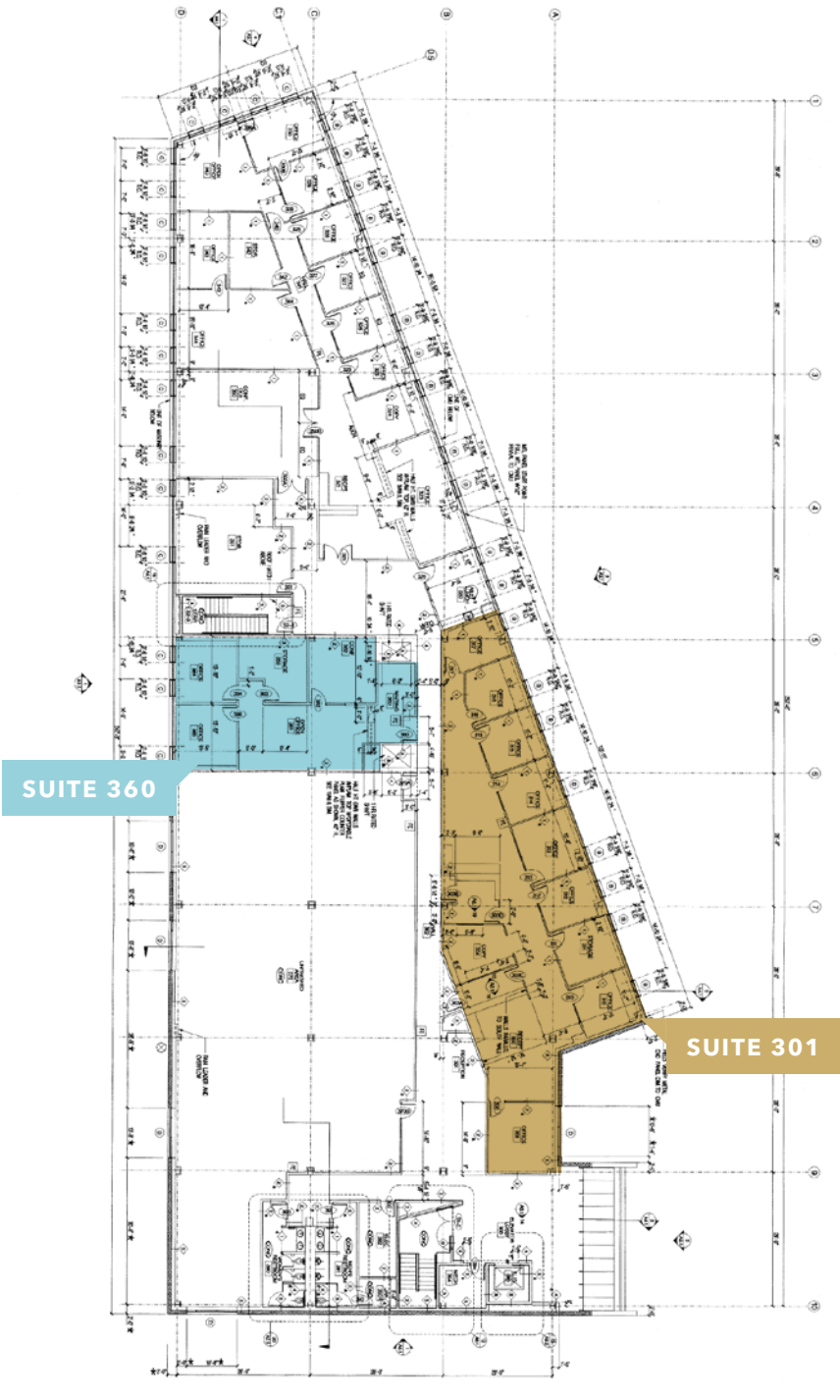
SUITE 360

2,785 SF

SUITE 301

NOW

AVAILABLE



SUITE 360

SUITE 301

SPENCER CLAPP  
206.248.7427  
spencer.clapp@kidder.com

KIDDER.COM

This information supplied herein is from sources we deem reliable. It is provided without any representation, warranty, or guarantee, expressed or implied as to its accuracy. Prospective Buyer or Tenant should conduct an independent investigation and verification of all matters deemed to be material, including, but not limited to, statements of income and expenses. Consult your attorney, accountant, or other professional advisor.





# FINISHING TRADES INSTITUTE NORTHWEST BUILDING



KIDDER.COM

This information supplied herein is from sources we deem reliable. It is provided without any representation, warranty, or guarantee, expressed or implied as to its accuracy. Prospective Buyer or Tenant should conduct an independent investigation and verification of all matters deemed to be material, including, but not limited to, statements of income and expenses. Consult your attorney, accountant, or other professional advisor.

**km** Kidder Mathews