

RETAIL FOR LEASE ODDFELLOWS BUILDING

911 E Pine St, Seattle, WA 98122



For more information please contact:

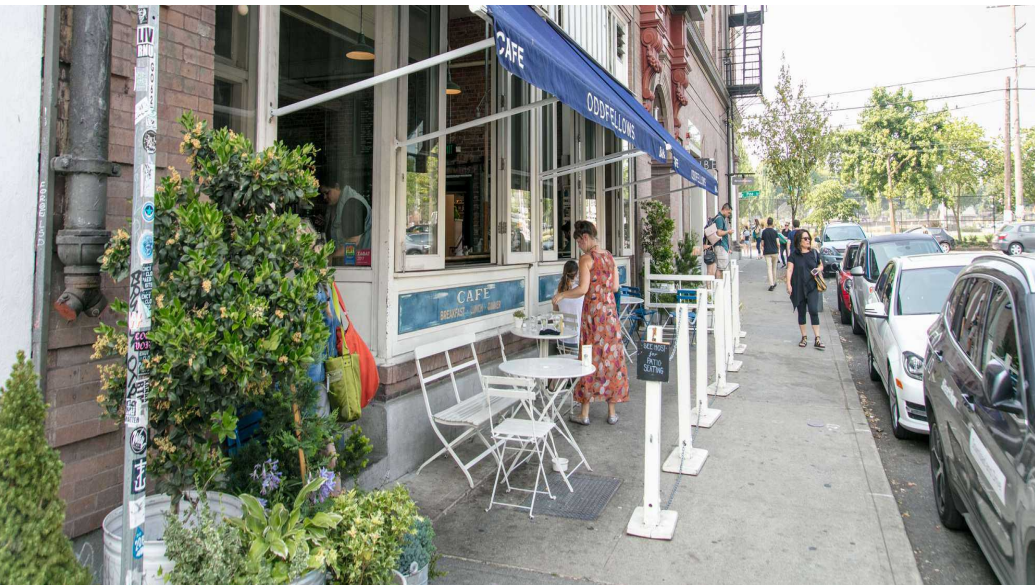
LAURA MILLER
laura@gibraltarusa.com
206.351.3573

LEX PETRAS
lexp@gibraltarusa.com
206.618.8462



911 E PINE ST, SEATTLE, WA 98122

ODDFELLOWS BUILDING



HIGHLIGHTS

- Rare opportunity to lease character rich retail in the heart of Capitol Hill's vibrant Pike/Pine Corridor
- Located at the street-level of the historic Oddfellows Building
- 1,807 SF street-level plus, internally connected via stairs, 1,096 SF basement level = total 2,903 SF
- Building co-tenants include: Century Ballroom, Oddfellows Cafe + Bar, Molly Moon's Ice Cream and Le Labo
- Located directly across from Cal Anderson Park and steps from Capitol Hill Light Rail Station
- Rental Rate: Street-Level \$45/SF plus 2024 NNN (\$14.60) plus Basement Level \$15.40/SF (no NNN charged on Basement) = \$10,382 per month



89

TRANSIT SCORE



100

WALK SCORE



87

BIKE SCORE



181,120

TOTAL POPULATION



115,125

TOTAL HOUSEHOLDS

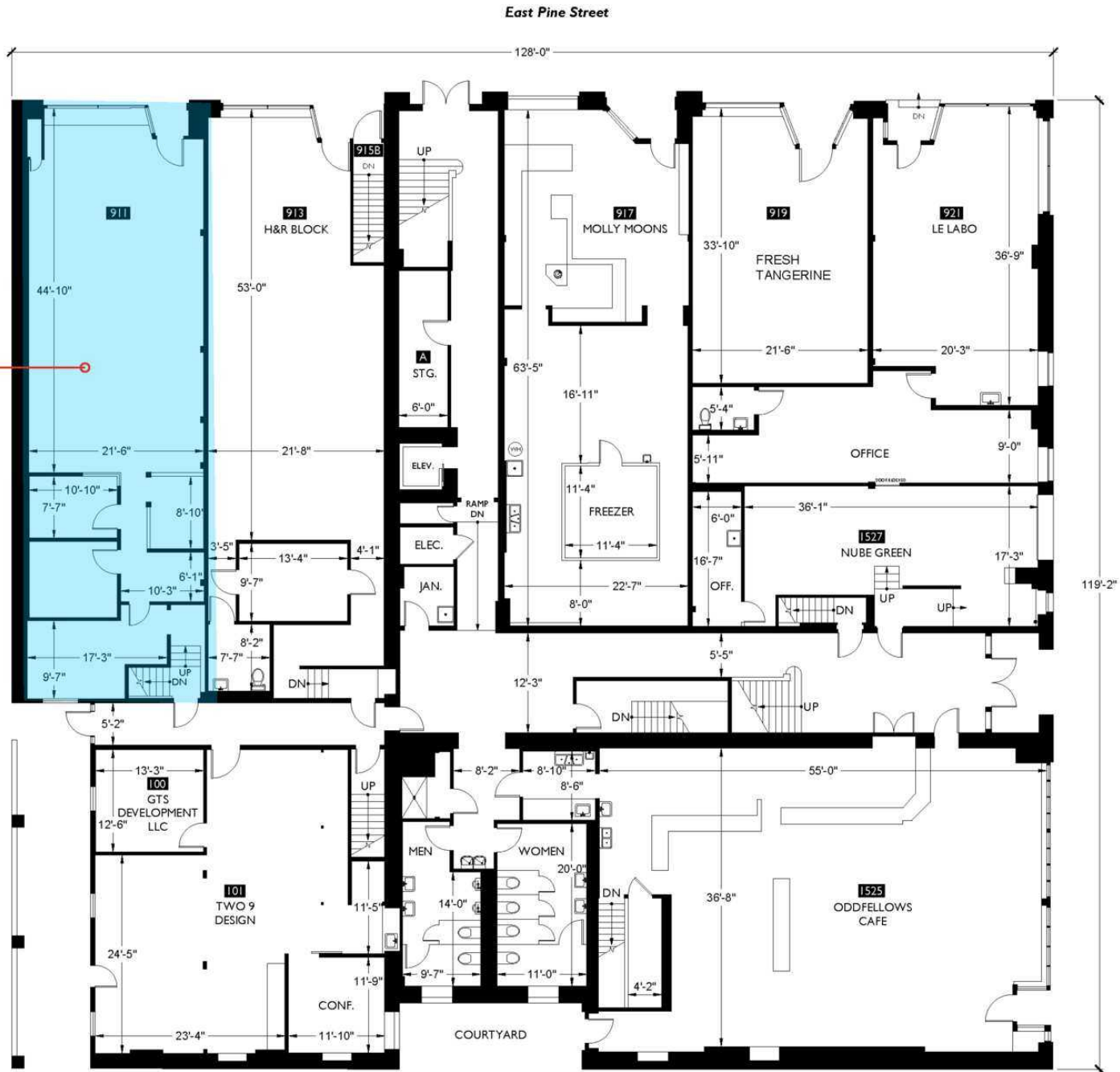


\$109,219

MEDIAN INCOME

* 2024 Demographics based on a 2-mile radius

Main Level
1,807 SF



10th Avenue



