

# RETAIL FOR LEASE

288 106th Ave NE  
Bellevue, WA 98004

Discover the vibrant pulse of urban living at Soma Towers, nestled in the heart of downtown Bellevue. Surrounded by a dynamic mix of residents and employees, Soma Towers epitomizes the essence of cosmopolitan living, offering an unparalleled platform for businesses to thrive.

---

Tiffini Connell  
Blake Taylor  
Kara Farley

## WCCR

West Coast Commercial Realty



SOMA | TOWERS  
color outside the lines







# SOMA TOWERS

color outside the lines

## THE OPPORTUNITY

### Urban Mix Food Court:

Culinary Adventures Await!

Immerse yourself in the culinary mosaic of our Urban Mix Food Court at Soma Towers. With available suites varying in size, this bustling hub invites you to showcase your innovative concepts alongside esteemed co-tenants including Just Poke, Xiao Chi Jie, Thai Grill, and L'Experience. Located amidst a vibrant community of residents and visitors, seize the opportunity to color outside the lines and redefine the gastronomic landscape of downtown Bellevue.





# SOMA TOWERS

color outside the lines



Suite 102-D1  
**1,105 SF AVAILABLE**  
 Type 2 Hood Potential  
 \*Tenant to confirm with city



Suite 102-E  
**817 SF AVAILABLE**  
 Type 2 Hood Potential  
 \*Tenant to confirm with city

Suite 101-B  
**1,900 SF AVAILABLE**

- 2nd St frontage.
- Private Entrance.
- Perfect for nail / hair salon, massage, or medspa.

Suites 102-D1 and 102-E can be combined  
**1,922 SF**



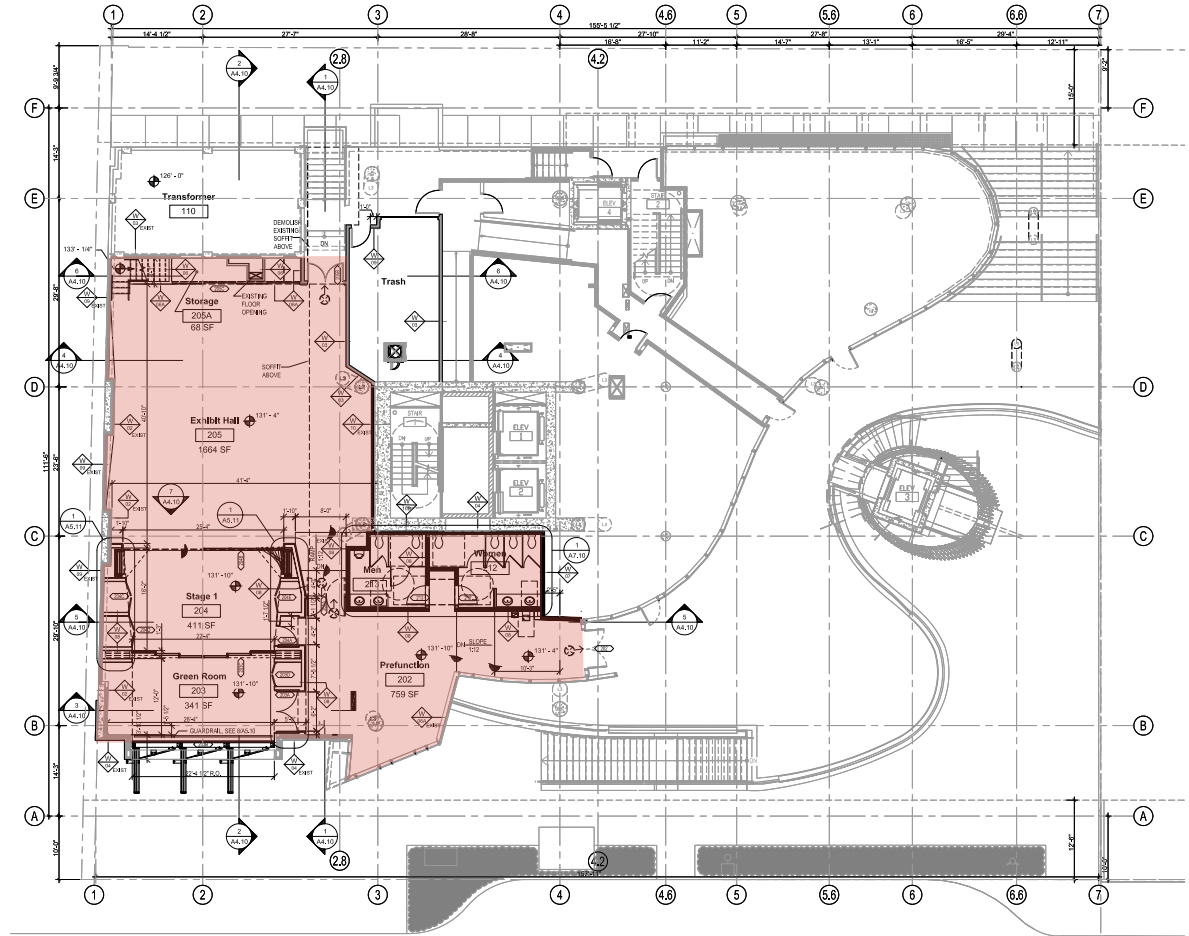
Suite 102-B  
**1,121 SF AVAILABLE**  
 Oyster Bar Concept



# Former Theater Turned Entertainment Haven:

## Suite 200 - 3,863 SF

Unleash Your Creativity!  
 Transforming the former theater space on the second floor of Soma Towers is your canvas to unleash creativity and captivate audiences. Whether you envision an event venue, a private concert hall, or a laughter-filled comedy club, this versatile space offers endless possibilities. Become a beacon of entertainment in downtown Bellevue.



01 LEVEL 2 EXHIBIT HALL FLOORPLAN  
 SCALE: 1/8" = 1'-0"

Type 1 Hood Potential \*Tenant to confirm with the city





# SOMA TOWERS

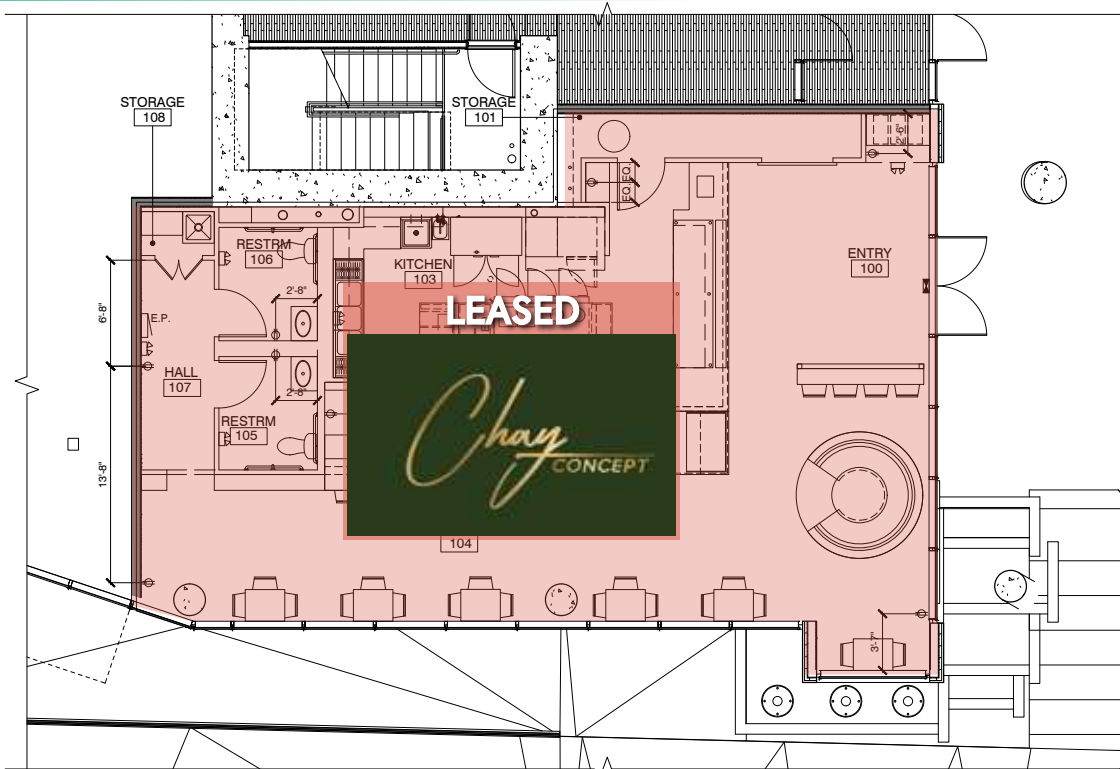
color outside the lines

## Second-Generation Restaurant with Type 1 Hood with scrubber:

### Suite 151 - 1,469 SF

Ready, Set, Cook!

Step into a turnkey restaurant space at Soma Towers, where culinary excellence meets convenience. With a modified Type 1 hood and previous infrastructure intact, kickstart your culinary journey without delay.



288 106th Avenue NE, Bellevue, WA 98004





# SOMA TOWERS

color outside the lines

## Why Choose Soma Towers?

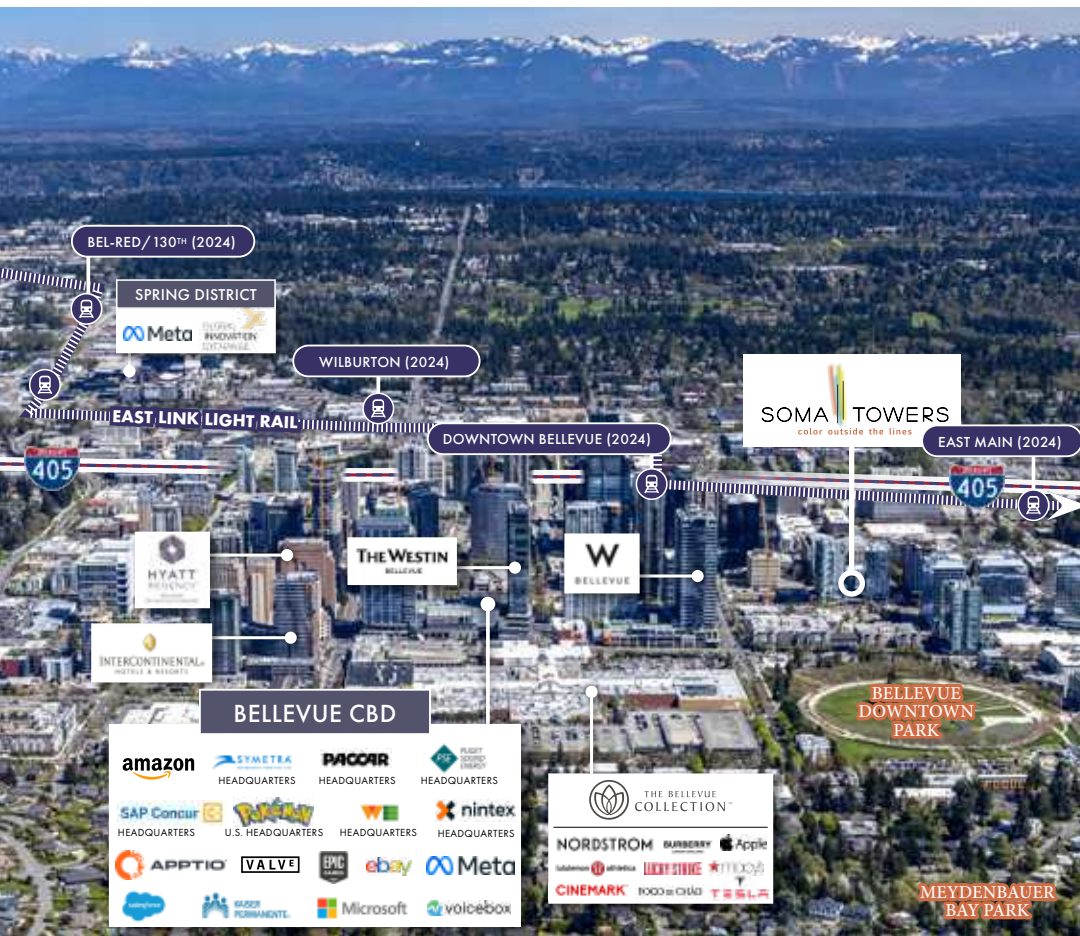
- Prime location in downtown Bellevue, surrounded by residents, employees, and visitors.
- Versatile spaces cater to a diverse range of businesses, from culinary ventures to entertainment hotspots.
- Embrace the spirit of creativity with our slogan “Color outside the lines” and redefine urban living at Soma Towers.





# SOMA TOWERS

color outside the lines



## DEMOGRAPHICS

	2-Mile:	5-Mile:	10-Mile:
AVERAGE HOUSEHOLD INCOME	\$178,444	\$174,118	\$149,030
TOTAL POPULATION	50,339	278,030	1,316,594



# SOMA TOWERS

color outside the lines

## Connect with Us Today!

Elevate your business to new heights at Soma Towers, where innovation and opportunity converge. Contact us now to secure your place among Bellevue's most vibrant commercial spaces and embark on a journey of boundless possibilities. Your future awaits at Soma Towers - where creativity knows no bounds!

**Tiffini Connell**

tiffini@wccommercialrealty.com

**Blake Taylor**

blake@wccommercialrealty.com

**Kara Farley**

karaf@wccommercialrealty.com

# WCCR

West Coast Commercial Realty

DISCLAIMER: The above information has been secured from sources believed to be reliable, however, no representations are made to its accuracy. Prospective tenants or buyers should consult their professional advisors and conduct their own independent investigation. Site plan and configuration are subject to change. Properties are subject to change in price and/or availability without notice. West Coast Commercial Realty, LLC

