

# Everett Mall Plaza

RETAIL FOR LEASE

1201 - 1425 SE Everett Mall Way, Everett WA 98208



## THE OPPORTUNITY

Prime Walmart and Michael's center located directly across the street from the Everett Mall, which was acquired in the Fall 2017. New mall owner, Brixton Capital, "...is very excited about the growth in the area and the long term sustainability of Everett Mall."\* Everett Mall Plaza and the Everett Mall straddle Everett Mall Way with an average daily traffic count of over 40,000 VPD. Easy, multi-point access, pylon signage and a line-up of strong, synergistic co-tenants. Unique opportunity to join an established retail area with stable, diverse retailers, service providers and restaurants. Call today for more information on options, including combining or demising spaces!



Tiffini Connell | Jonathan Willett

(206) 283-5212  
www.wccommercialrealty.com

**WCCR**  
West Coast Commercial Realty

DISCLAIMER: The above information has been secured from sources believed to be reliable, however, no representations are made to its accuracy. Prospective tenants or buyers should consult their professional advisors and conduct their own independent investigation. Site plan and configuration are subject to change. Properties are subject to change in price and/or availability without notice. West Coast Commercial Realty, LLC

# Everett Mall Plaza

RETAIL FOR LEASE

1201 - 1425 SE Everett Mall Way, Everett WA 98208



Highly visible location directly across from Everett Mall

EVERETT  
MALL

REGAL  
CINEMAS

Burlington OLD NAVY

LA FITNESS PARTY CITY

ULTA BEAUTY Olive Garden

FAMOUS footwear KAY JEWELERS

ACE BARTELL DRUGS zumiez

Bath&BodyWorks

**Everett Mall Plaza**

Walmart HALF PRICE BOOKS

Michaels Where Creativity Happens

Red Robin SELECT BURGERS & SIDES

petco

Tiffini Connell | Jonathan Willett (206) 283-5212  
www.wccommercialrealty.com

**WCCR**  
West Coast Commercial Realty

CBA ICSC CoStar POWERBROKER 2018 Top Broker Award

DISCLAIMER: The above information has been secured from sources believed to be reliable, however, no representations are made to its accuracy. Prospective tenants or buyers should consult their professional advisors and conduct their own independent investigation. Site plan and configuration are subject to change. Properties are subject to change in price and/or availability without notice. West Coast Commercial Realty, LLC

# Everett Mall Plaza

RETAIL FOR LEASE

1201 - 1425 SE Everett Mall Way, Everett WA 98208



## DEMOGRAPHICS

### TOTAL POPULATION

1-Mile: 16,536  
3-Mile: 120,241  
5-Mile: 249,791

### TOTAL DAYTIME EMPLOYEES

1-Mile: 12,688  
3-Mile: 42,054  
5-Mile: 98,281

### AVERAGE HOUSEHOLD INCOME

1-Mile: \$72,789  
3-Mile: \$79,005  
5-Mile: \$97,238

### POPULATION MEDIAN AGE

1-Mile: 34.1  
3-Mile: 34.1  
5-Mile: 36.0



Tiffini Connell | Jonathan Willett (206) 283-5212  
www.wccommercialrealty.com

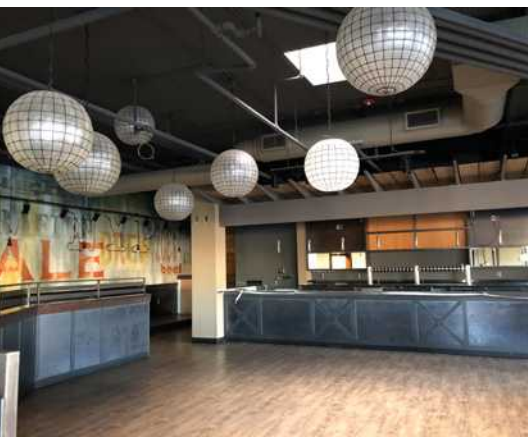
**WCCR**  
West Coast Commercial Realty

DISCLAIMER: The above information has been secured from sources believed to be reliable, however, no representations are made to its accuracy. Prospective tenants or buyers should consult their professional advisors and conduct their own independent investigation. Site plan and configuration are subject to change. Properties are subject to change in price and/or availability without notice. West Coast Commercial Realty, LLC

# Everett Mall Plaza

RETAIL FOR LEASE

1201 - 1425 SE Everett Mall Way, Everett WA 98208



# WCCR

West Coast Commercial Realty

Located on the highly visible, lighted intersection of Everett Mall Way directly across from Everett Mall