



For Lease

Don Zebe
208 403 1973
don.zebe@colliers.com

Jared Zebe
208 709 7311
jared.zebe@colliers.com

Mike Zebe
208 705 6453
mike.zebe@colliers.com

2043 E Center Street
Pocatello, Idaho 83201
208 951 2100
colliers.com/idaho

Foothill Plaza

1000 Pocatello Creek Road | Pocatello, ID

Highlights:

- Located in close proximity to Interstate 15
- High traffic location, main thoroughfare leading to the busiest intersection in Pocatello

This document has been prepared by Colliers for advertising and general information only. Colliers makes no guarantees, representations or warranties of any kind, expressed or implied, regarding the information including, but not limited to, warranties of content, accuracy and reliability. Any interested party should undertake their own inquiries as to the accuracy of the information. Colliers excludes unequivocally all inferred or implied terms, conditions and warranties arising out of this document and excludes all liability for loss and damages arising there from. This publication is the copyrighted property of Colliers and /or its licensor(s). © 2024. All rights reserved. This communication is not intended to cause or induce breach of an existing listing agreement. Colliers Portneuf Valley, LLC.

For Lease

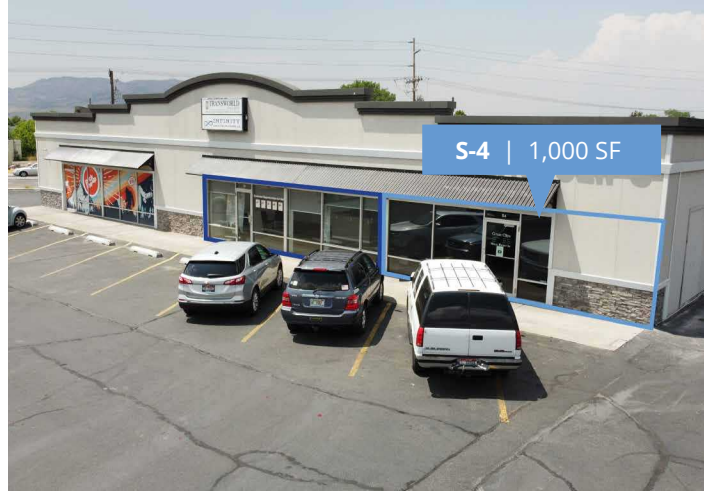
Property Information

Property Type	Retail
Parking	551 parking stalls (ratio/4.79)
Lease Type	NNN
Access	Contact Agent

Space Available

Suite	Size
S-4	1,000 SF
W-1	2,363 SF

S-4 floor plan coming soon

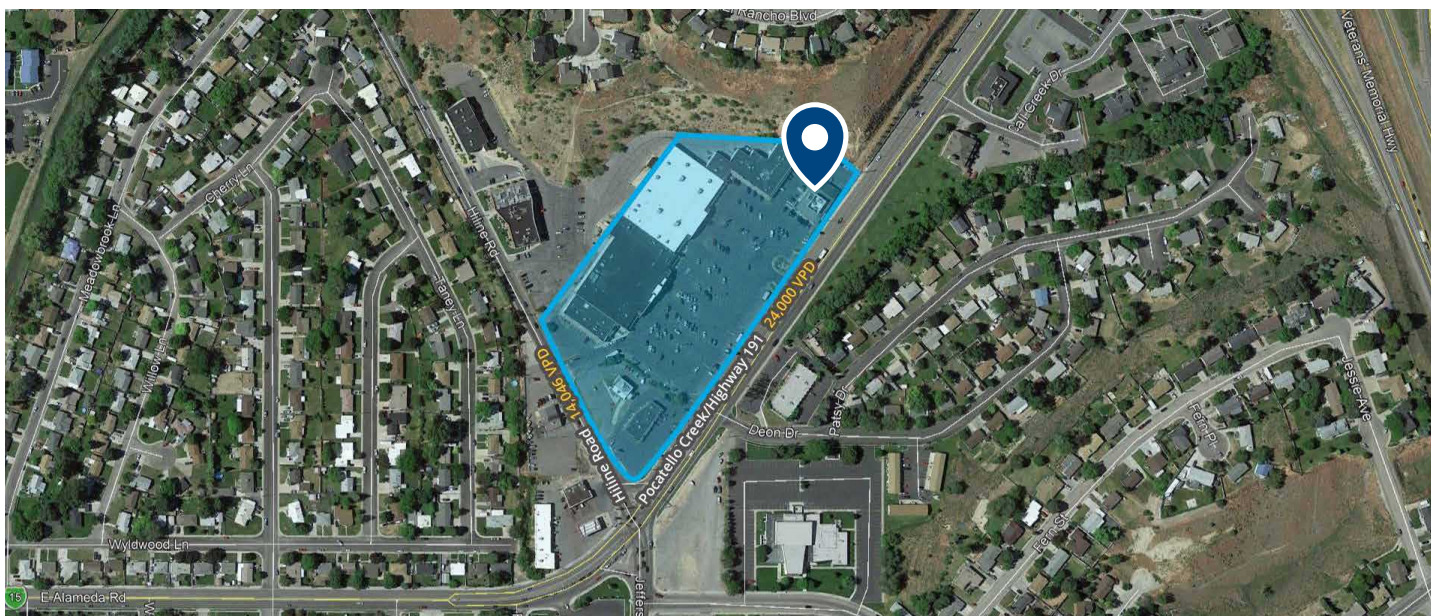


Site Plan

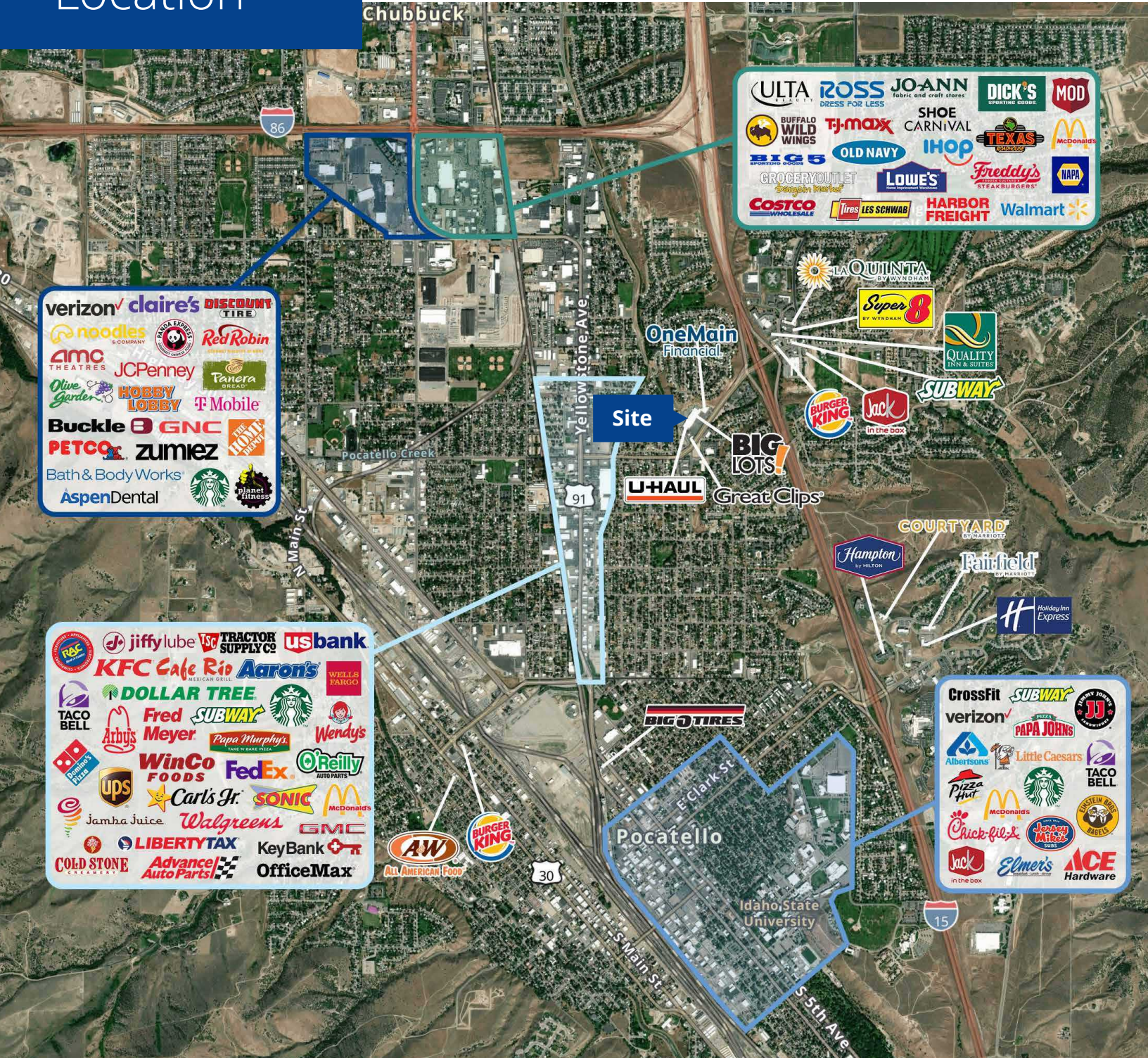


POCATELLO CREEK ROAD (U.S. HIGHWAY 191) 24,000 ADT

For Lease



Location



verizon, claire's, DISCOUNT TIRE, noodles, Red Robin, AMC THEATRES, JCPenney, Panera Bread, Olive Garden, HOBBY LOBBY, T Mobile, Buckle, GNC, THE HOME DEPOT, PETCO, zumiez, Bath & Body Works, Starbucks, planet fitness, AspenDental

ULTA, ROSS, JO-ANN, DICK'S, MOD, BUFFALO WILD WINGS, TJ-maxx, SHOE CARNIVAL, TEXAS, McDonald's, BIG 5, OLD NAVY, IHop, NAPA, GROCERY OUTLET, Lowe's, Freddy's, Costco, Tires LES SCHWAB, HARBOR FREIGHT, Walmart

jiffy lube, TRACTOR SUPPLY CO, US bank, KFC Cafe Rio, Aaron's, WELLS FARGO, DOLLAR TREE, Starbucks, TACO BELL, Fred Meyer, SUBWAY, Wendy's, Arby's, Papa Murphy's, WinCo FOODS, FedEx, O'Reilly, UPS, Carl's Jr., SONIC, McDonald's, Jamba Juice, Walgreens, GMC, LIBERTY TAX, KeyBank, COLD STONE, Advance! Auto Parts, OfficeMax, AW, BURGER KING, ALL AMERICAN FOOD

OneMain Financial, Site, U-HAUL, Great Clips, BIG LOTS!, BURGER KING, Jack In the box, SUBWAY, Super 8, LA QUINTA, QUALITY INN & SUITES, Courtyard, Hampton by Hilton, Fairfield, Holiday Inn Express

Crossfit, SUBWAY, verizon, PAPA JOHN'S, JJ, Albertsons, Little Caesars, TACO BELL, Pizza Hut, McDonald's, Chick-fil-ee, Jersey Mike's, Jack In the box, Elmer's, ACE Hardware

Demographics



2043 E Center Street
 Pocatello, Idaho 83201
 208 951 2100
 colliers.com/idaho

	1 Mile	3 Miles	5 Miles
Population	14,030	61,668	75,379
Households	5,454	23,943	28,619
Avg. Income	\$59,207	\$64,008	\$65,235