

OLYMPIC REPROGRAPHICS BUILDING

1014-1016 FIRST AVENUE SOUTH
SEATTLE, WA

CBRE

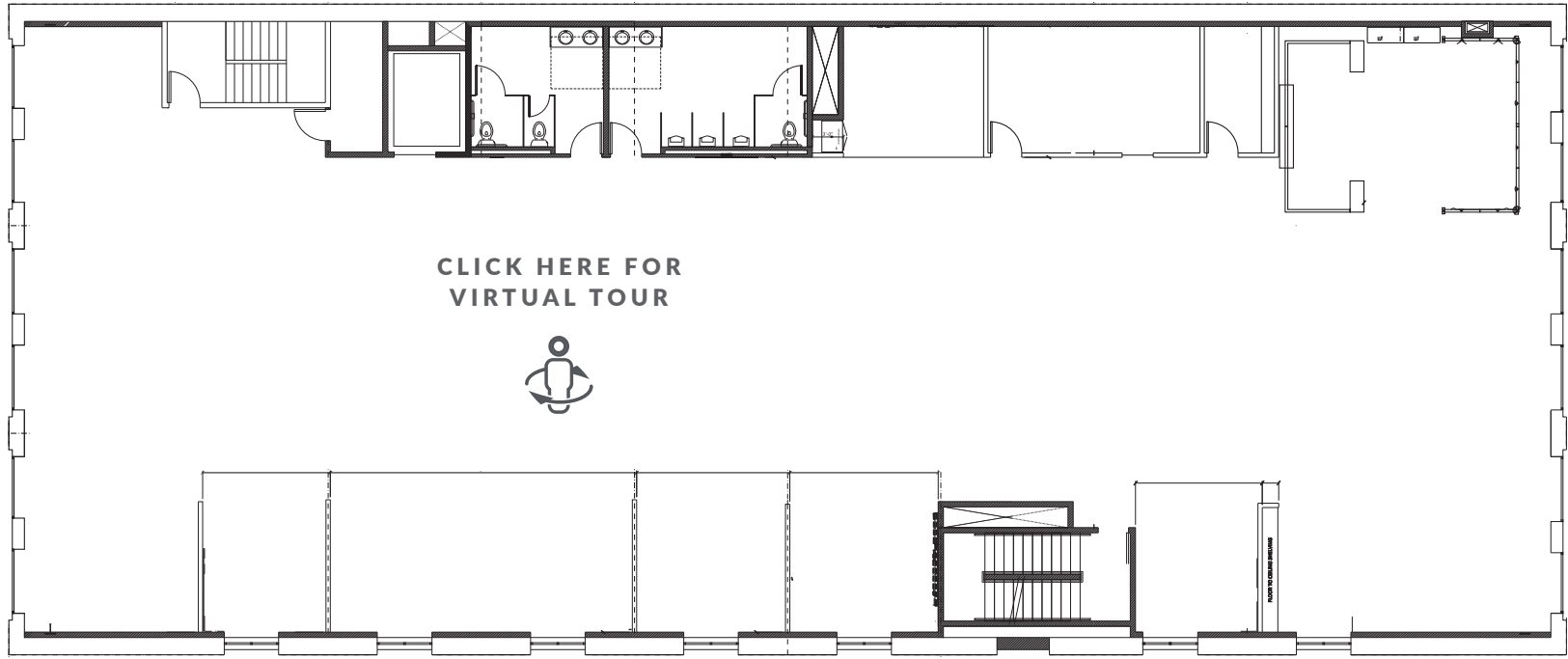


THIRD FLOOR
AVAILABLE
FOR LEASE

3rd Floor



3rd Floor



CURRENT AVAILABILITIES

FLOOR	AREA
3rd	8,407 RSF

Property HIGHLIGHTS



Furniture
available



Abundant
parking available



Excellent
natural light



Unmatched
access to I-5, I-90
and mass transit



Seattle

HIGHLIGHTS

Over 75 tech companies occupy approximately 1.3 million SF in Pioneer Square

Tenants include; Dell EMC, Avalara, CDK Global, Payscale, RealSelf, Qualtrics, and ComScore.



OLYMPIC REPROGRAPHICS BUILDING

FOR MORE
INFORMATION

SEAN SUSSEX

+1 206 931 8411

sean.sussex@cbre.com

CBRE, Inc. | 1420 Fifth Avenue, Suite 3800 | Seattle, Washington 98101



© 2024 CBRE, Inc. All rights reserved. This information has been obtained from sources believed reliable, but has not been verified for accuracy or completeness. Any projections, opinions, or estimates are subject to uncertainty. The information may not represent the current or future performance of the property. You and your advisors should conduct a careful, independent investigation of the property and verify all information. Any reliance on this information is solely at your own risk. CBRE and the CBRE logo are service marks of CBRE, Inc. and/or its affiliated or related companies in the United States and other countries. All other marks displayed on this document are the property of their respective owners. Photos herein are the property of their respective owners and use of these images without the express written consent of the owner is prohibited. 10-9-2024CH