

Madison MEDICAL TOWER

1101 MADISON ST
SEATTLE, WA 98104

Sublease

1,909 SF Available
EXPIRATION 07/31/2025

CHARLIE FARRA

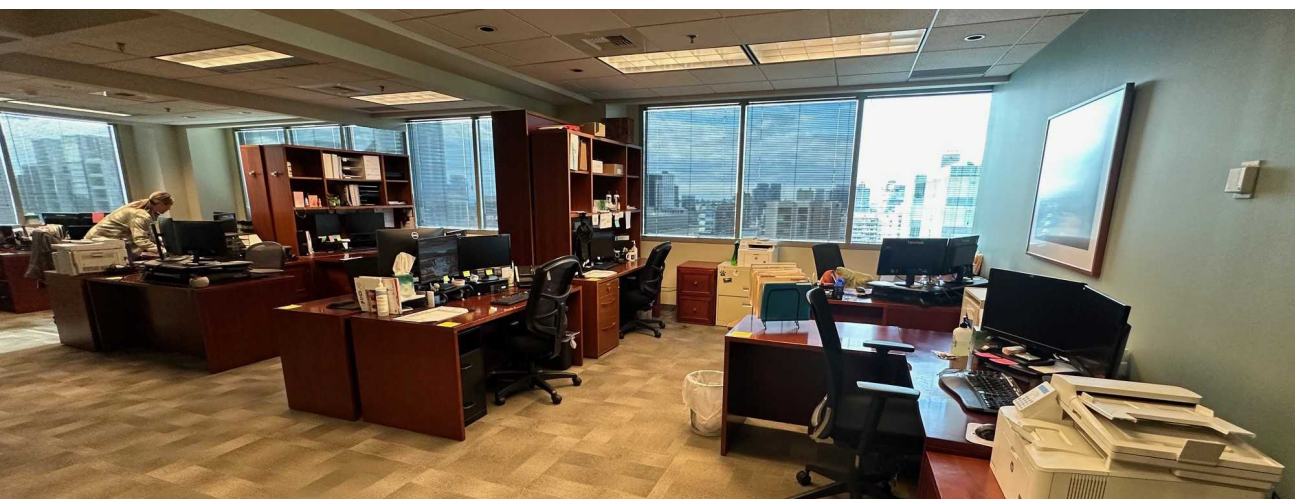
Executive Vice President
206.999.2928
charlie.farra@nmrk.com

ED MAO

Associate
310.694.7191
edward.mao@nmrk.com

NEWMARK





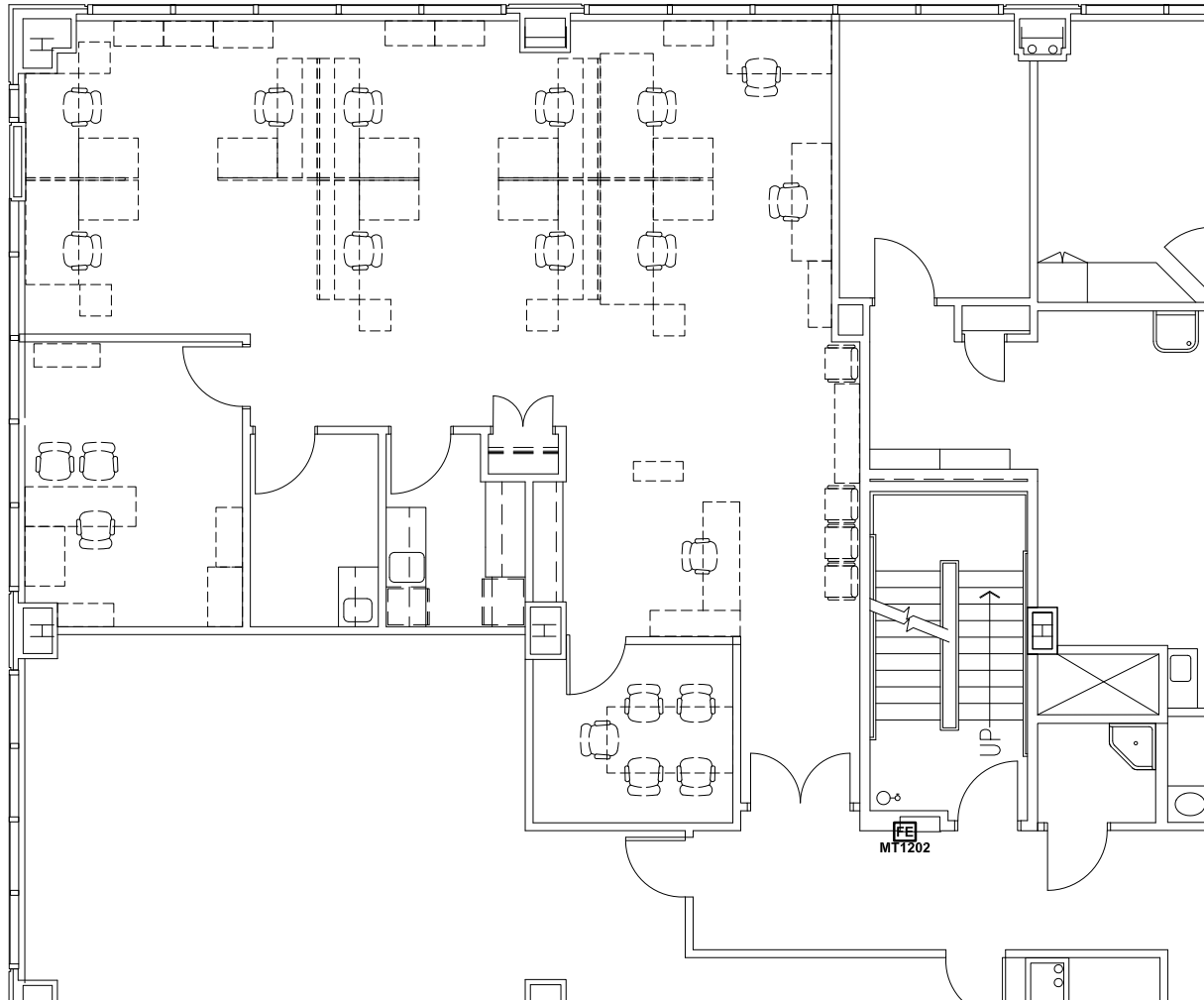
Sublease Highlights

12TH FLOOR | 1,909 SF

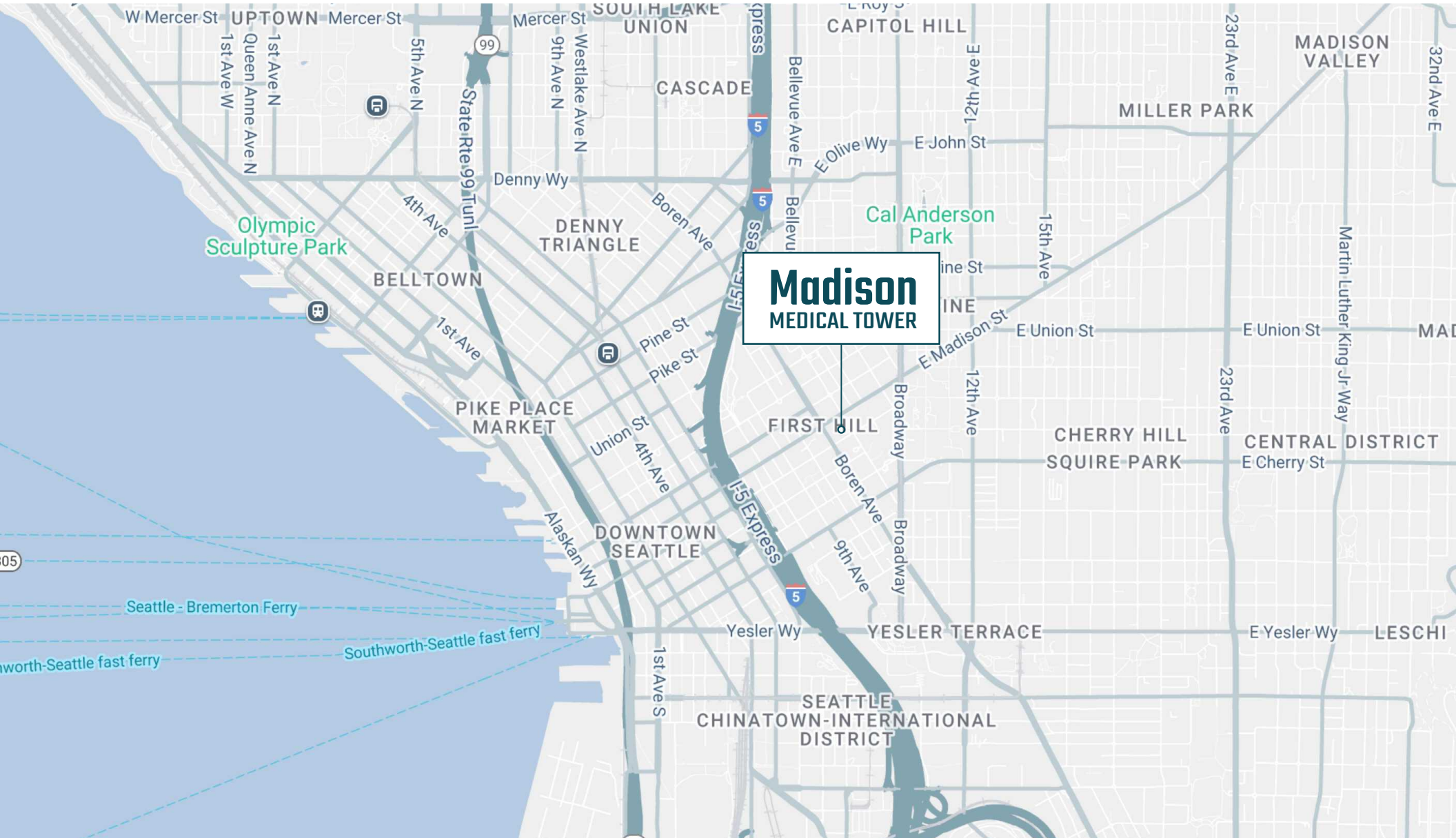
- Medical office available for sublease
- Available now
- LXD - July 31st, 2025
- Can sign longer direct lease with Landlord
- Immediate access to First Hill Street Car and multiple bus lines
- Many convenient onsite amenities such as restaurants and coffee.

12TH FLOOR

1,909 SF | Available Now



Location





NEWMARK

CHARLIE FARRA
Executive Vice President
206.999.2928
charlie.farra@nrmk.com

ED MAO
Associate
310.694.7191
edward.mao@nrmk.com

The distributor of this communication is performing acts for which a real estate license is required. The information contained herein has been obtained from sources deemed reliable but has not been verified and no guarantee, warranty or representation, either express or implied, is made with respect to such information. Terms of sale or lease and availability are subject to change or withdrawal without notice. MP-562