

# FOR LEASE

5805 - 5831 Lacey Blvd SE  
Lacey, WA 98503



## LACEY DOWNS PLAZA

Patric Grissom

First Western Properties—Tacoma Inc. | 253.472.0404  
6402 Tacoma Mall Blvd, Tacoma, WA 98409 | fwp-inc.com



# 5805 - 5831 LACEY BLVD SE

## AVAILABLE

BUILDING	SUITE	SF	RATE PSF
5105	PAD	6,106	\$20.00 PSF, NNN
5831	G	1,461 SF	\$20.00 PSF, NNN
5828	A	2,480 SF	\$20.00 PSF, NNN

NNN FOR 2024: \$6.36 PSF



# NEARBY TENANTS



**CUTTERS POINT**  
COFFEE CO.



SUMMARY



Population



Average HH Income



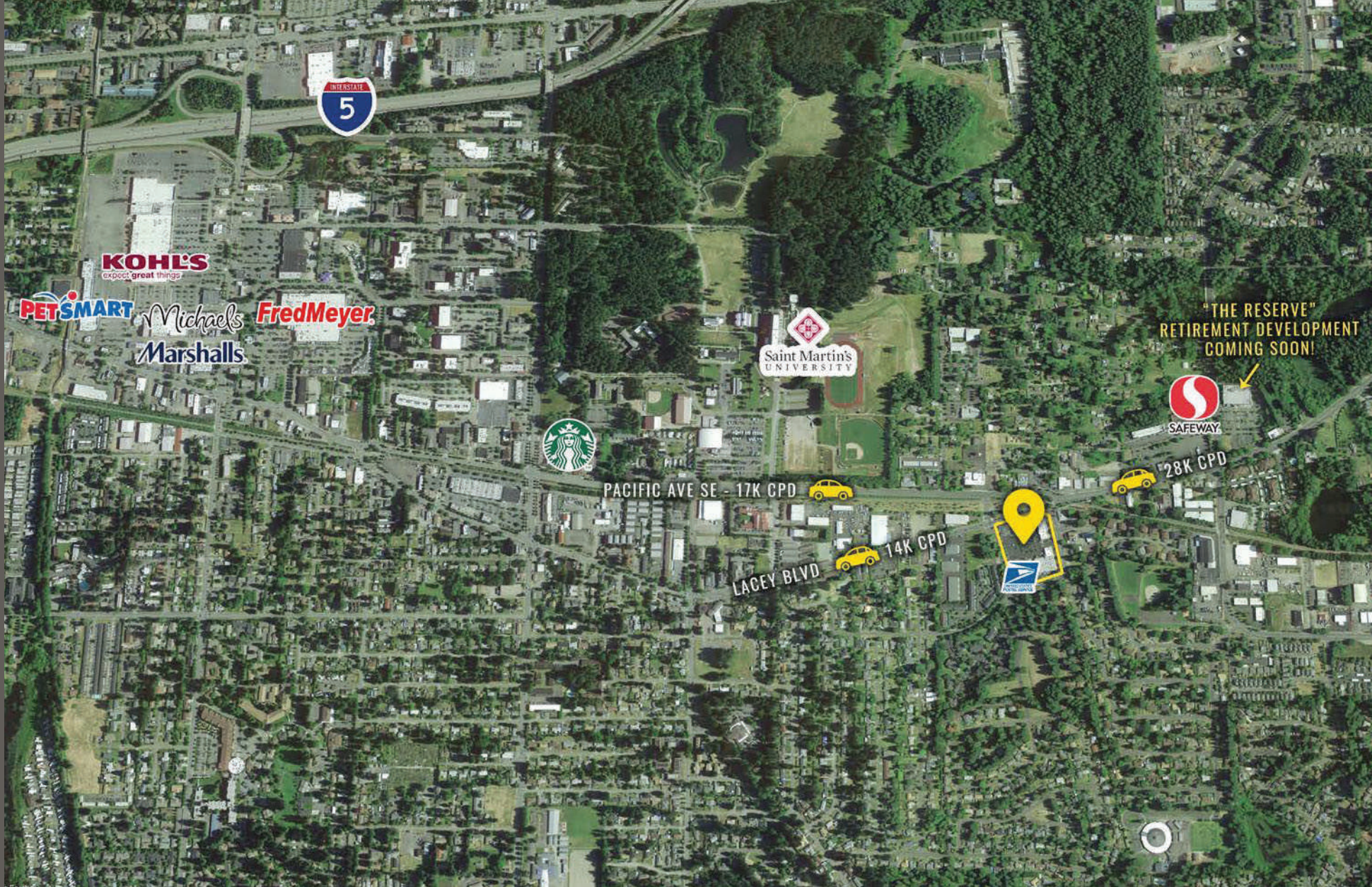
Daytime Population

Regis - 2023

Mile 1	10,424	\$97,096	8,845
Mile 3	79,580	\$107,248	48,805
Mile 5	151,095	\$116,293	101,603



LOCATION DETAILS



Easy Ingress  
and Egress



High Volume  
Co-tenant



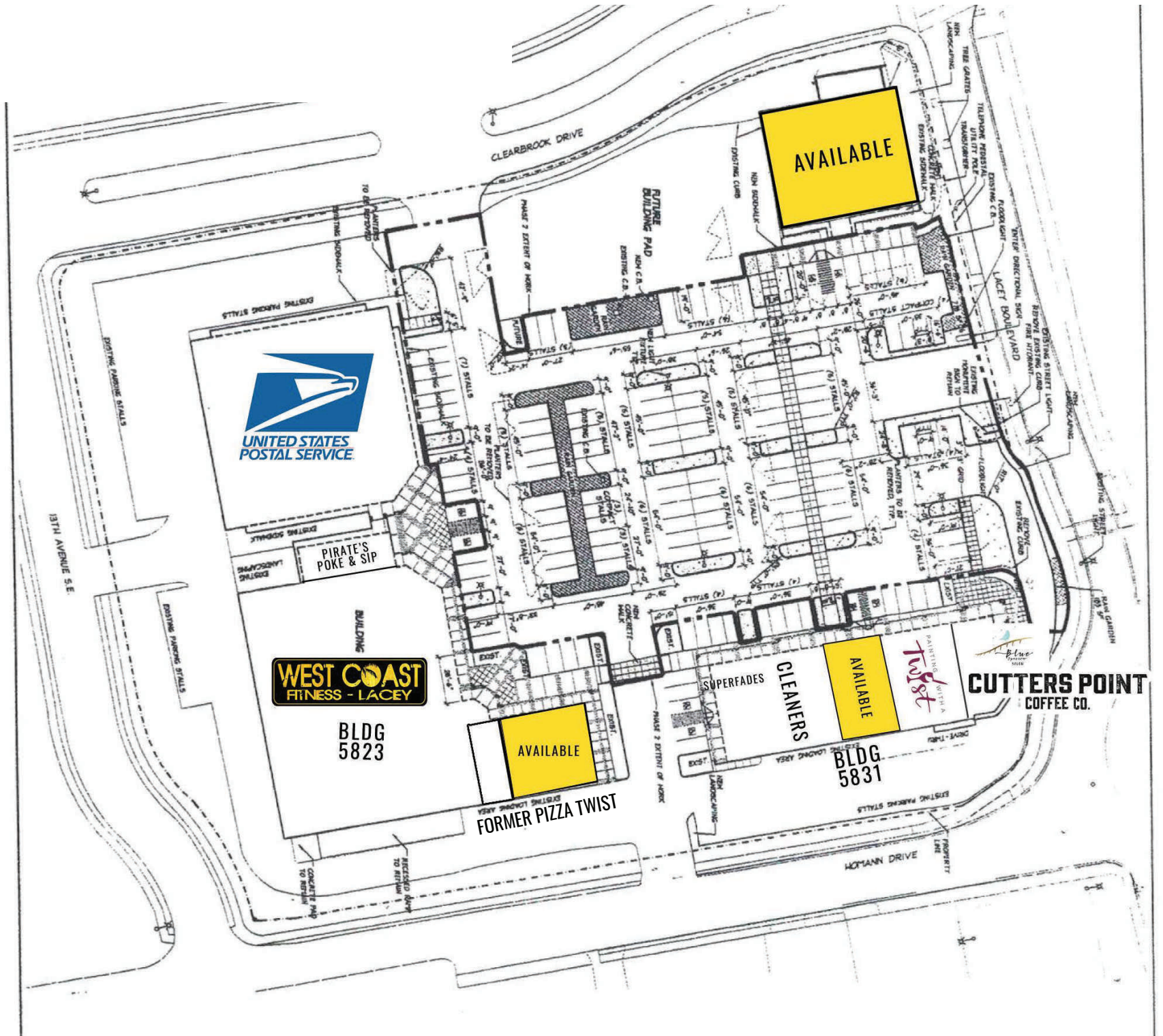
14,000 CPD  
Lacey Blvd



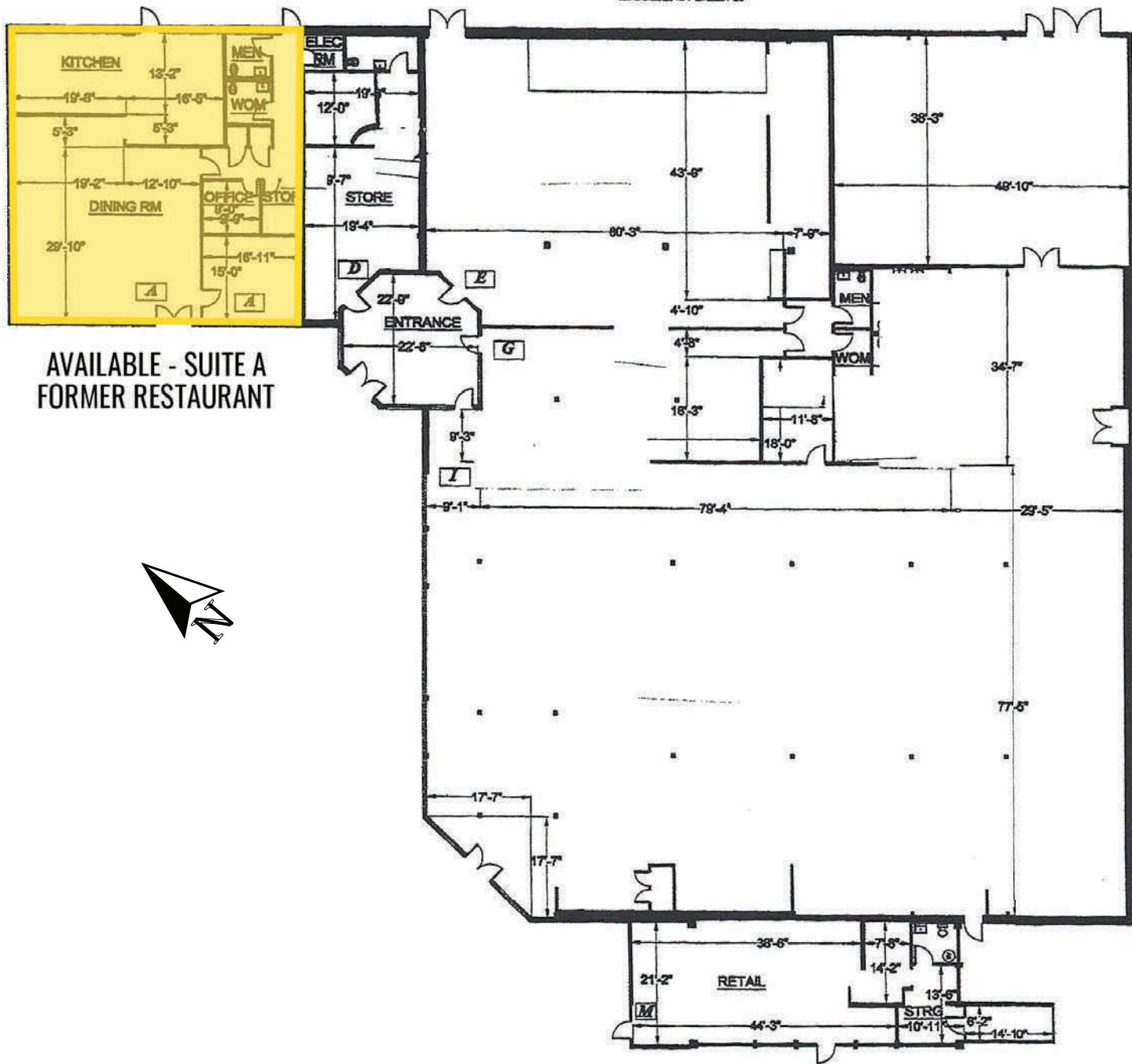
28,000 CPD  
Pacific Ave SE



# SITE PLAN OVERVIEW



FLOOR PLANS SUITE A

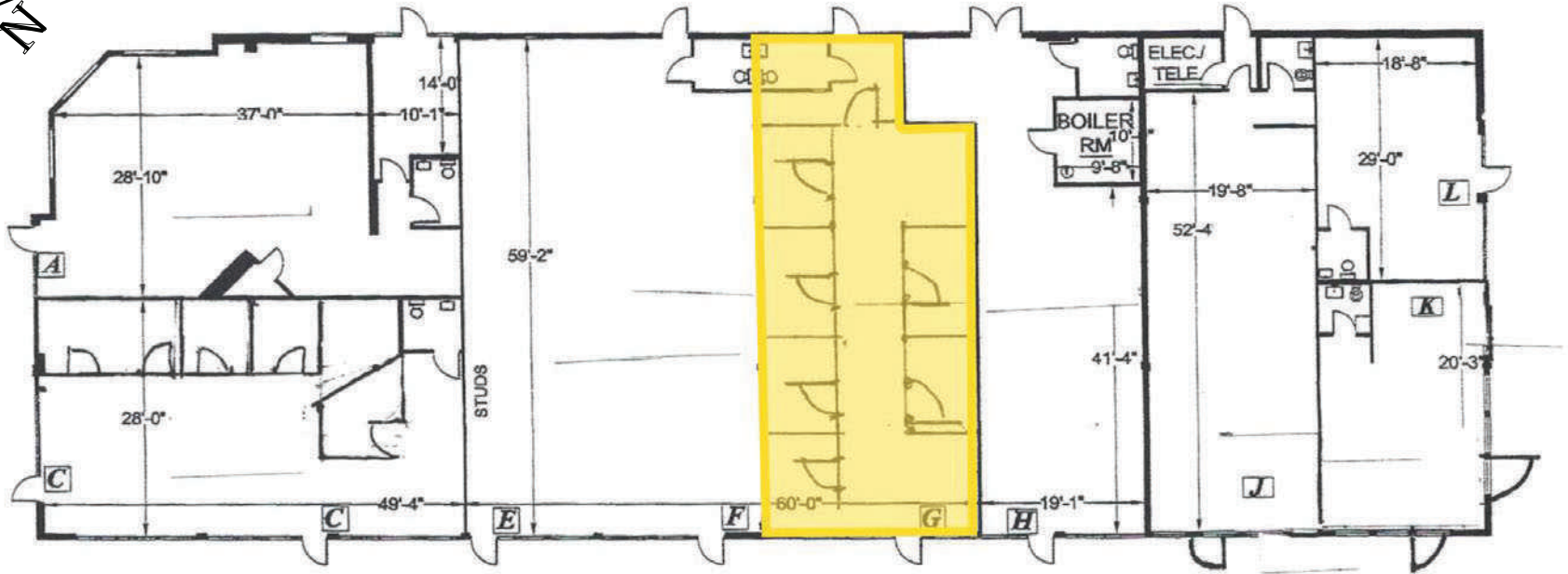






HOMANN DRIVE SE

LACEY BLVD SE



AVAILABLE - SUITE G





TACOMA | KIRKLAND | PORTLAND | SEATTLE



RELATIONSHIP FOCUSED. RESULTS DRIVEN

PATRIC GRISSOM

253.284.3635

[pgrissom@firstwesternproperties.com](mailto:pgrissom@firstwesternproperties.com)



First Western Properties—Tacoma Inc. | 253.472.0404  
6402 Tacoma Mall Blvd, Tacoma, WA 98409 | [fwp-inc.com](http://fwp-inc.com)

© First Western Properties, Inc. DISCLAIMER: The above information has been secured from sources believed to be reliable, however, no representations are made to its accuracy. Prospective tenants or buyers should consult their professional advisors and conduct their own independent investigation. Properties are subject to change in price and/or availability without notice.