

8,000 TOTAL SF

INDUSTRIAL MANUFACTURING/WAREHOUSE



FOR LEASE

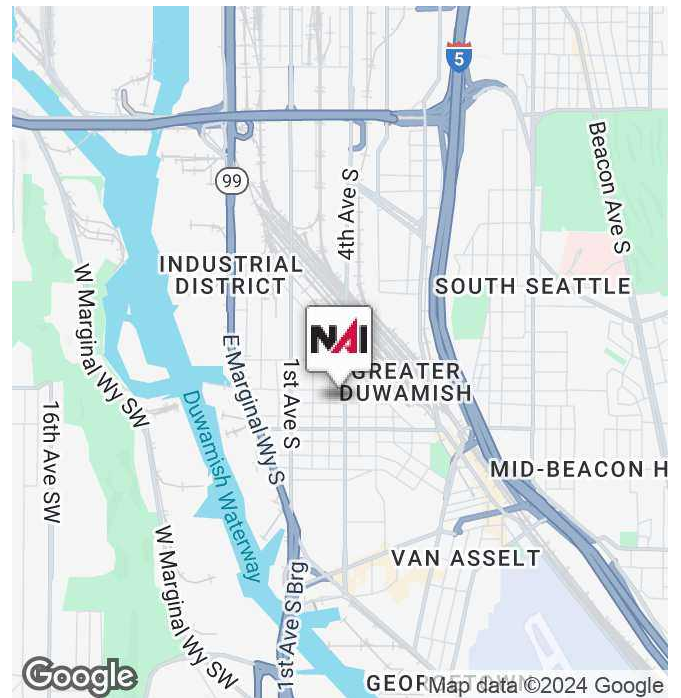


317 S Bennett Street

317 S Bennett Street
Seattle, Washington 98108

Property Highlights

- 8,000 SF Total
- 4,000 SF of 1st floor manufacturing warehouse (**12' ceiling height**)
- 4,000 SF of 2nd floor office (divisible)
- Excellent location off of 1st Avenue S
- Parking ratio: 4 stalls per 1,000 SF
- Above average power
- Small secured yard available
- Lease Rate: Negotiable
- NNN: \$0.33/SF/Mo. (est.), plus utilities



<https://www.nai-psp.com>

Bob Swain, CCIM Partner | 425.586.5622
bswain@nai-psp.com

Matthew Hopkins Associate | 425.586.5635
mhopkins@nai-psp.com

NO WARRANTY, EXPRESS OR IMPLIED, IS MADE AS TO THE ACCURACY OF THE INFORMATION CONTAINED HEREIN. THIS INFORMATION IS SUBMITTED SUBJECT TO ERRORS, OMISSIONS, CHANGE OF PRICE, RENTAL OR OTHER CONDITIONS, WITHDRAWAL WITHOUT NOTICE, AND IS SUBJECT TO ANY SPECIAL LISTING CONDITIONS IMPOSED BY OUR PRINCIPALS, COOPERATING BROKERS, BUYERS, TENANTS AND OTHER PARTIES WHO RECEIVE THIS DOCUMENT SHOULD NOT RELY ON IT, BUT SHOULD USE IT AS A STARTING POINT OF ANALYSIS, AND SHOULD INDEPENDENTLY CONFIRM THE ACCURACY OF THE INFORMATION CONTAINED HEREIN THROUGH A DUE DILIGENCE REVIEW OF THE BOOKS, RECORDS, FILES AND DOCUMENTS THAT CONSTITUTE RELIABLE SOURCES OF THE INFORMATION DESCRIBED HEREIN. LOGOS ARE FOR IDENTIFICATION PURPOSES ONLY AND MAY BE TRADEMARKS OF THEIR RESPECTIVE COMPANIES.

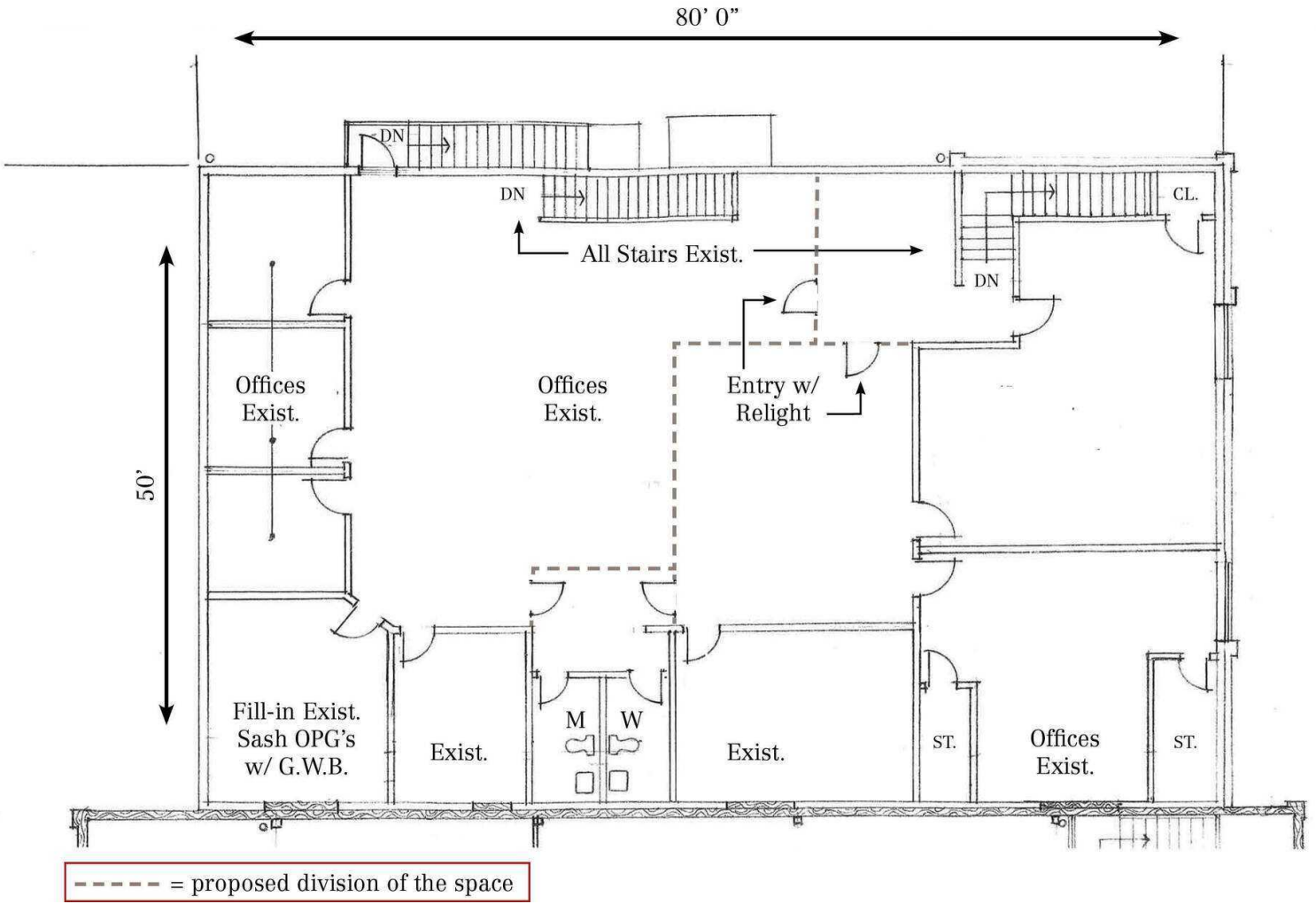
8,000 TOTAL SF

INDUSTRIAL MANUFACTURING/WAREHOUSE

FOR LEASE



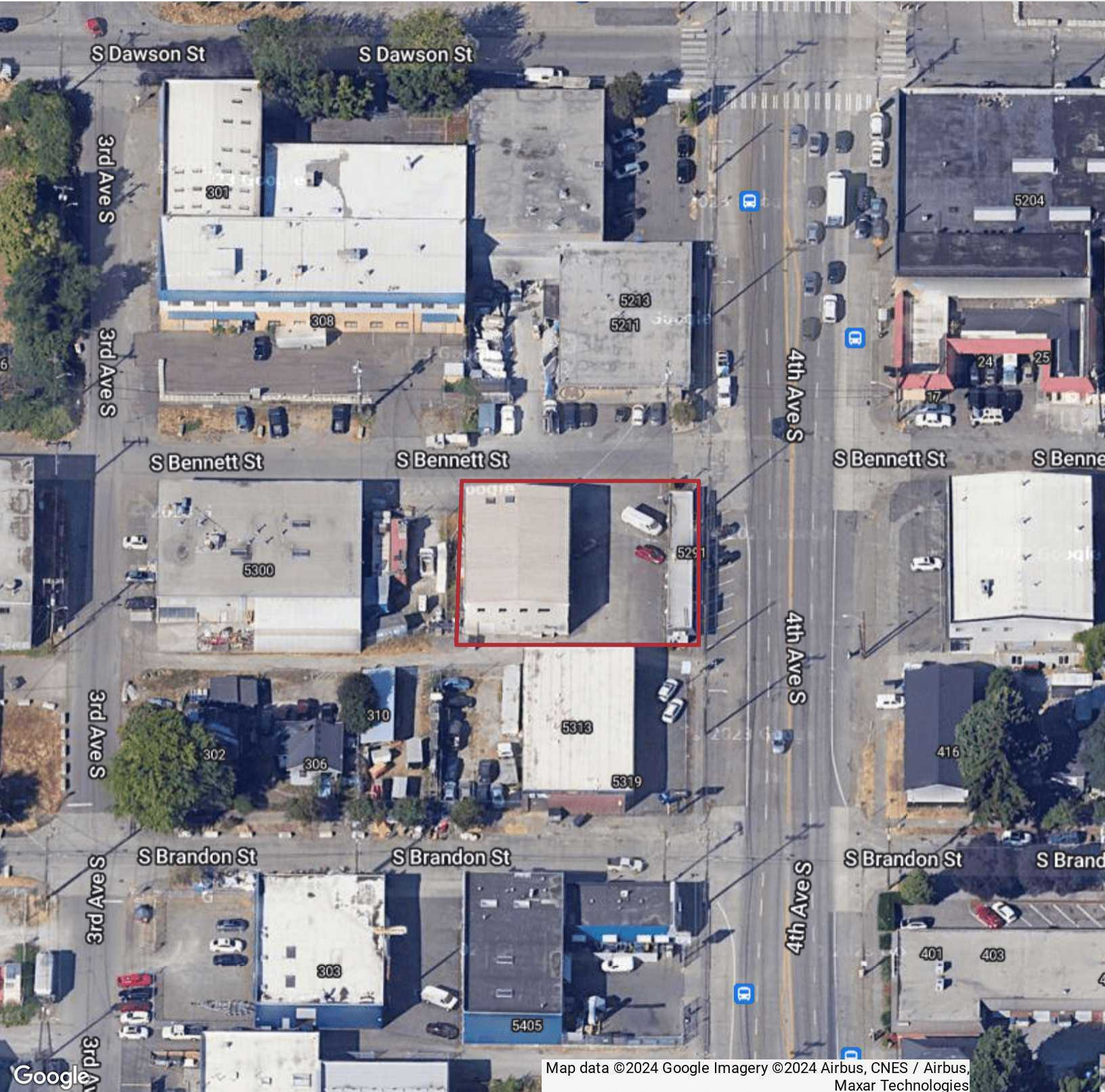
2nd Floor Office Plan



8,000 TOTAL SF

INDUSTRIAL MANUFACTURING/WAREHOUSE

FOR LEASE



Map data ©2024 Google Imagery ©2024 Airbus, CNES / Airbus, Maxar Technologies



<https://www.nai-psp.com>

Bob Swain, CCIM
Partner | 425.586.5622
bswain@nai-psp.com

Matthew Hopkins
Associate | 425.586.5635
mhopkins@nai-psp.com

NO WARRANTY, EXPRESS OR IMPLIED, IS MADE AS TO THE ACCURACY OF THE INFORMATION CONTAINED HEREIN. THIS INFORMATION IS SUBMITTED SUBJECT TO ERRORS, OMISSIONS, CHANGE OF PRICE, RENTAL OR OTHER CONDITIONS, WITHDRAWAL WITHOUT NOTICE, AND IS SUBJECT TO ANY SPECIAL LISTING CONDITIONS IMPOSED BY OUR PRINCIPALS, COOPERATING BROKERS, BUYERS, TENANTS AND OTHER PARTIES WHO RECEIVE THIS DOCUMENT SHOULD NOT RELY ON IT, BUT SHOULD USE IT AS A STARTING POINT OF ANALYSIS, AND SHOULD INDEPENDENTLY CONFIRM THE ACCURACY OF THE INFORMATION CONTAINED HEREIN THROUGH A DUE DILIGENCE REVIEW OF THE BOOKS, RECORDS, FILES AND DOCUMENTS THAT CONSTITUTE RELIABLE SOURCES OF THE INFORMATION DESCRIBED HEREIN. LOGOS ARE FOR IDENTIFICATION PURPOSES ONLY AND MAY BE TRADEMARKS OF THEIR RESPECTIVE COMPANIES.