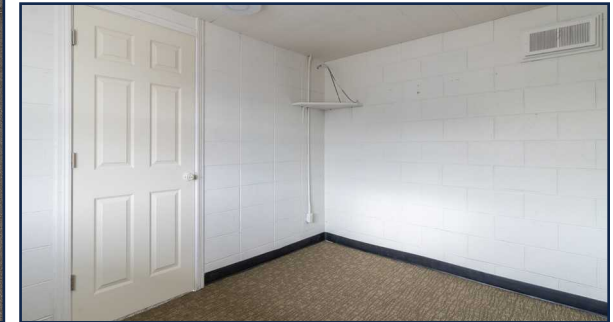
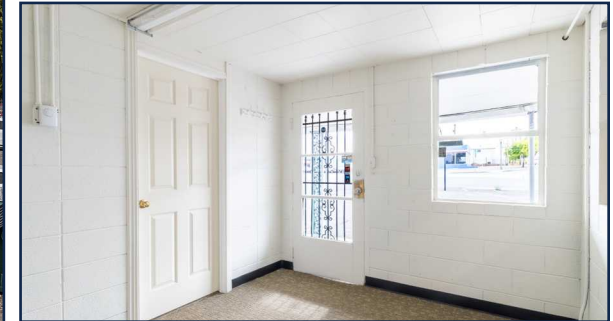


FOR LEASE **\$3,000/SF + NNN**



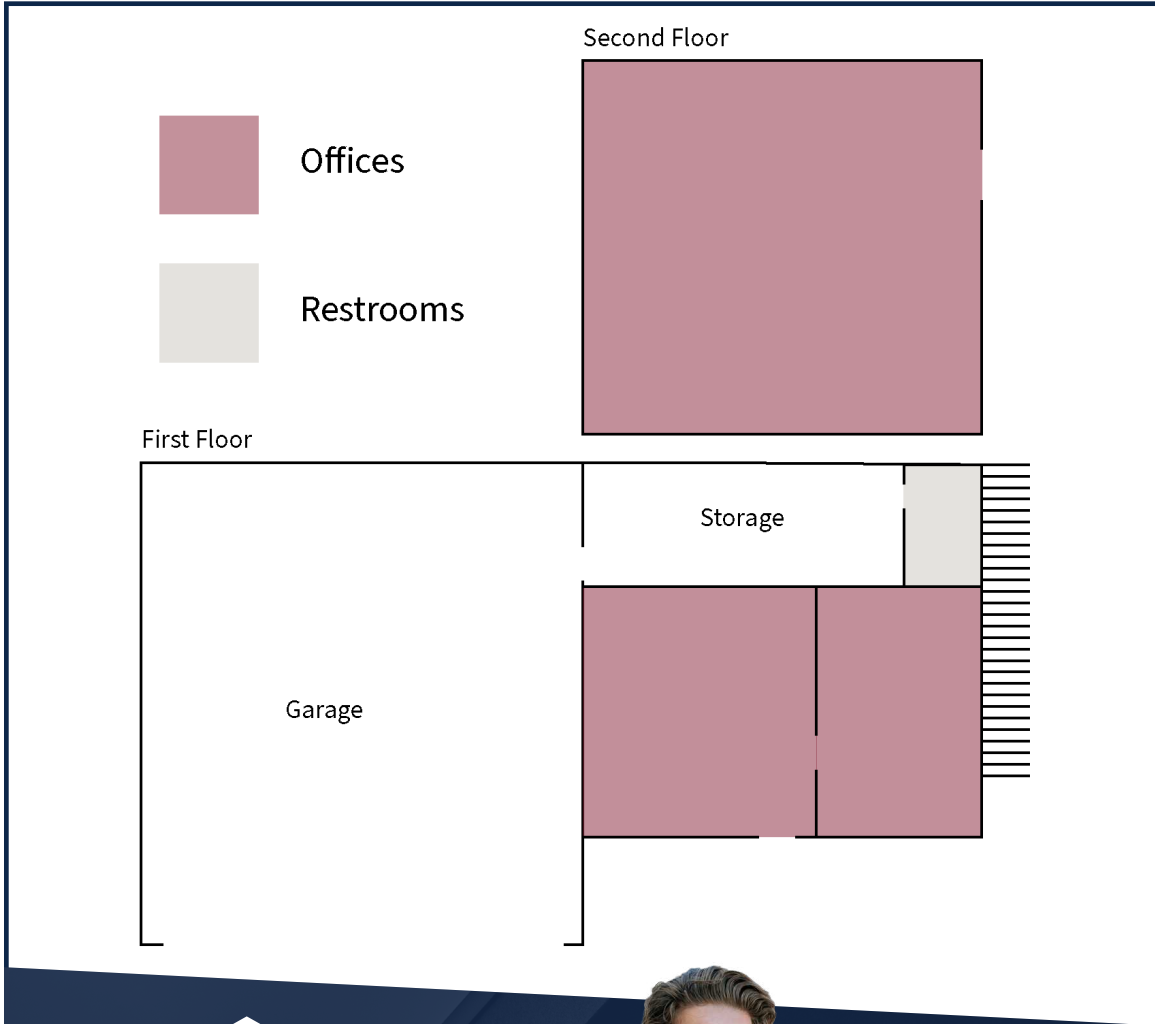
VERSITILE RETAIL AUTOMOTIVE GROSS LEASE!

This 1,081-square-foot versatile retail/automotive space is now available as a gross lease in a high-traffic area of Kennewick. Positioned at the corner of W Columbia Drive and N Benton Street, this property offers excellent visibility, making it ideal for a variety of retail or automotive-related businesses. The building has three separate offices, and a garage bay. **MLS#279670**

- Gross Lease
- Automotive Use Allowed
- UMU Zoning
- High Trafficked Location

FOR LEASE \$3,000/MO+ NNN

206 COLUMBIA DR. | Kennewick, WA.



DERRICK STRICKER
DESIGNATED BROKER



derrick@strickercre.com
509.591.9949



JAZMINE MURILLO
COMMERCIAL BROKER



jazmine@strickercre.com
509.591.9949

