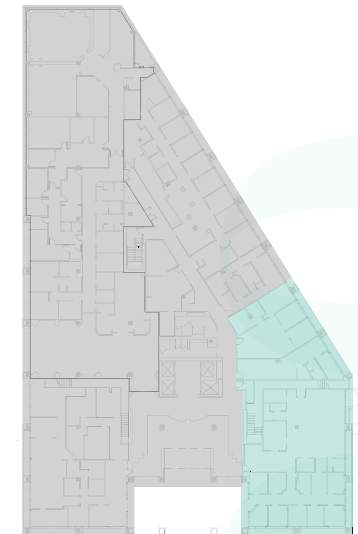
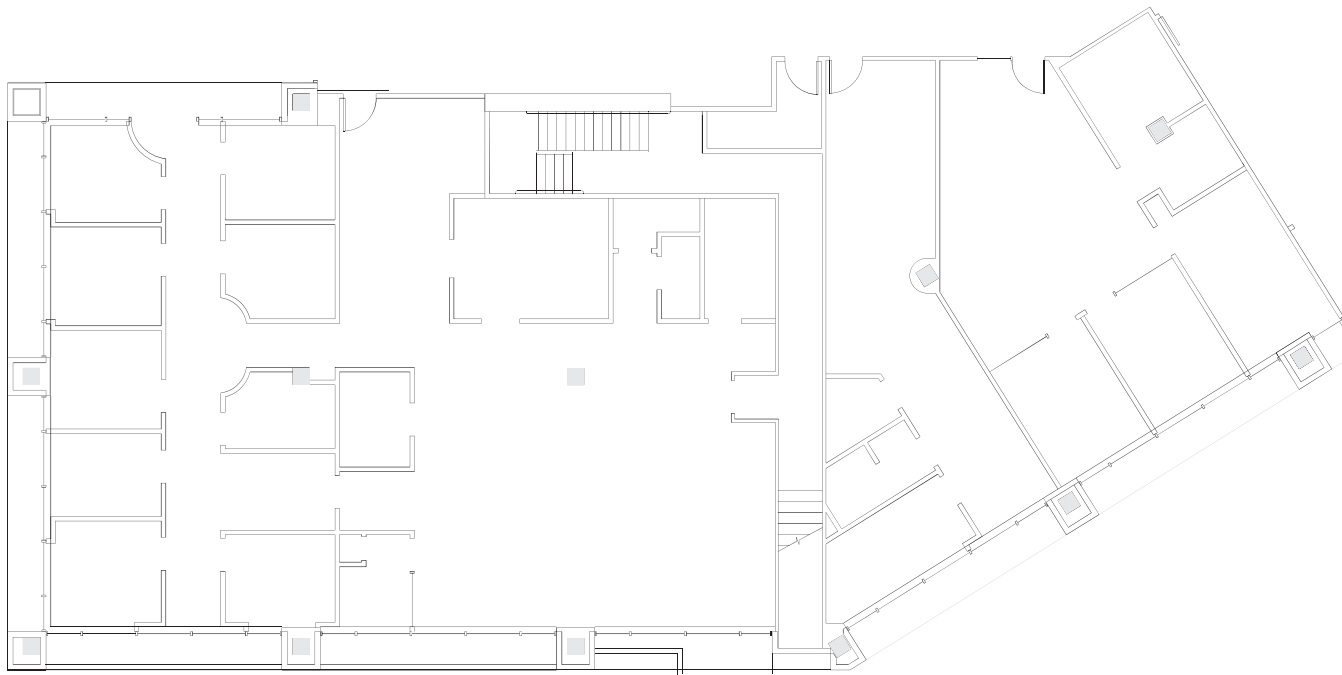


# Suite 100 | 3,668 RSF

of Class A Medical Outpatient Space



## As-Built Space Plan



KEY

MARCUS YAMAMOTO

Senior Vice President | [marcus.yamamoto@cbre.com](mailto:marcus.yamamoto@cbre.com) | +1 206 292 6062

KATIE SMITH

Senior Associate | [katie.m.smith@cbre.com](mailto:katie.m.smith@cbre.com) | +1 206 292 6012

**CBRE** Healthpeak® | DOC  
LISTED  
NYSE

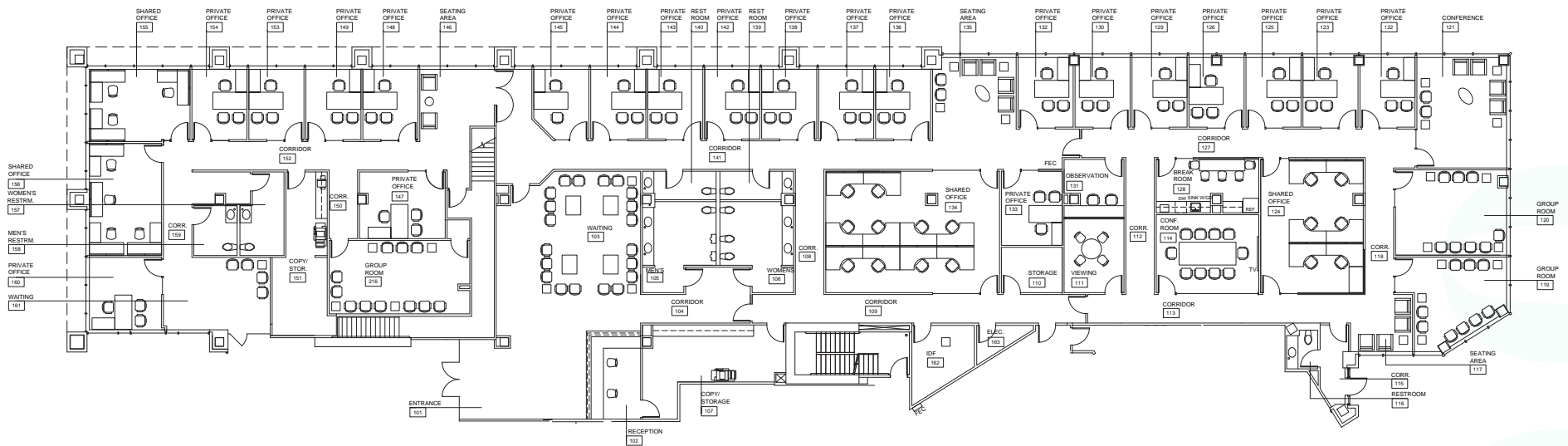
© 2024 CBRE, Inc. All rights reserved. This information has been obtained from sources believed reliable, but has not been verified for accuracy or completeness. You should conduct a careful, independent investigation of the property and verify all information. Any reliance on this information is solely at your own risk. CBRE and the CBRE logo are service marks of CBRE, Inc. All other marks displayed on this document are the property of their respective owners, and the use of such logos does not imply any affiliation with or endorsement of CBRE. Photos herein are the property of their respective owners. Use of these images without the express written consent of the owner is prohibited. PMStudio\_October2024

# Suite 170 | 13,894 RSF

of Class A Medical Outpatient Space



## As-Built Space Plan



MARCUS YAMAMOTO  
KATIE SMITH

Senior Vice President | [marcus.yamamoto@cbre.com](mailto:marcus.yamamoto@cbre.com) | +1 206 292 6062  
Senior Associate | [katie.m.smith@cbre.com](mailto:katie.m.smith@cbre.com) | +1 206 292 6012

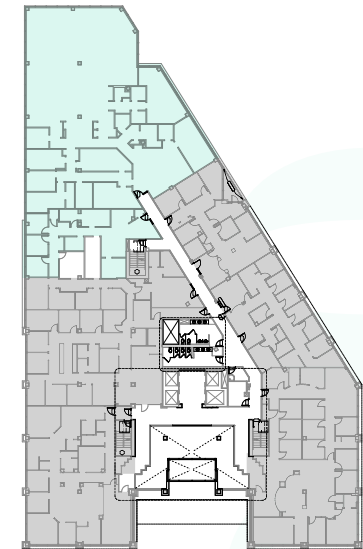
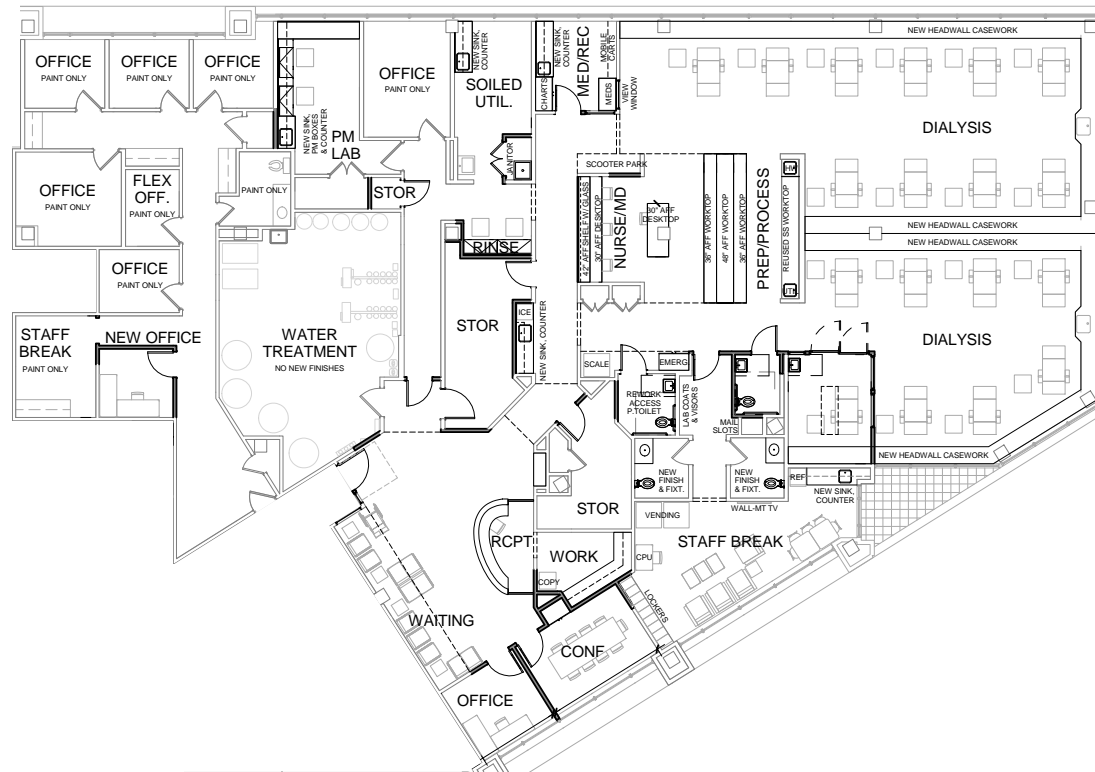
CBRE Healthpeak® | DOC  
LISTED  
NYSE

# Suite 260 | 8,959 RSF

of Class A Medical Outpatient Space



## As-Built Space Plan



KEY

MARCUS YAMAMOTO  
KATIE SMITH

Senior Vice President | [marcus.yamamoto@cbre.com](mailto:marcus.yamamoto@cbre.com) | +1 206 292 6062  
Senior Associate | [katie.m.smith@cbre.com](mailto:katie.m.smith@cbre.com) | +1 206 292 6012

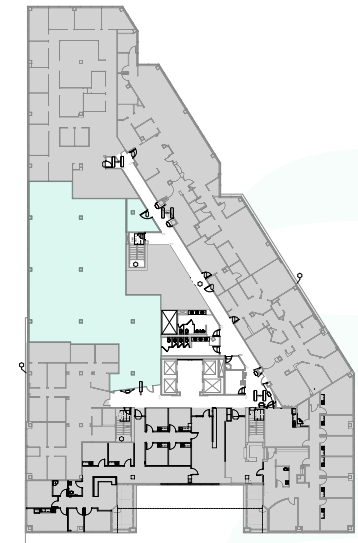
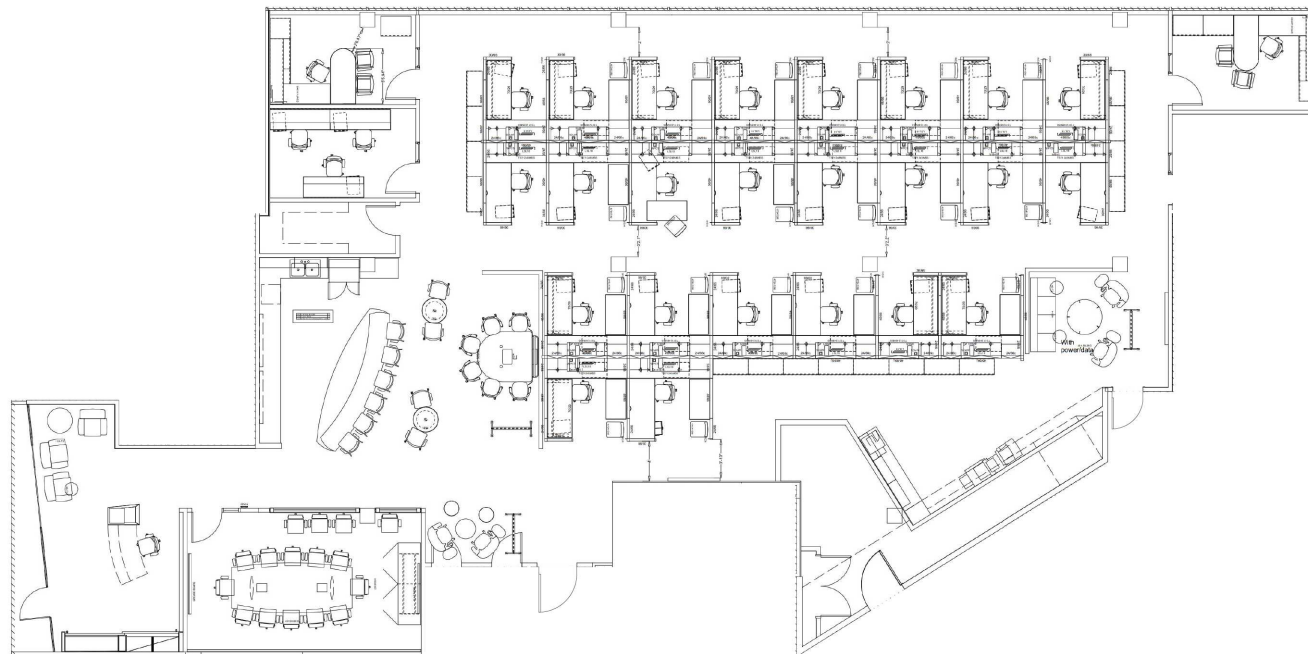
CBRE Healthpeak® | DOC  
LISTED  
NYSE

# Suite 304 | 6,857 RSF

of Class A Medical Outpatient Space



## As-Built Space Plan



KEY

MARCUS YAMAMOTO

Senior Vice President | [marcus.yamamoto@cbre.com](mailto:marcus.yamamoto@cbre.com) | +1 206 292 6062

KATIE SMITH

Senior Associate | [katie.m.smith@cbre.com](mailto:katie.m.smith@cbre.com) | +1 206 292 6012

CBRE Healthpeak® | DOC  
LISTED  
NYSE

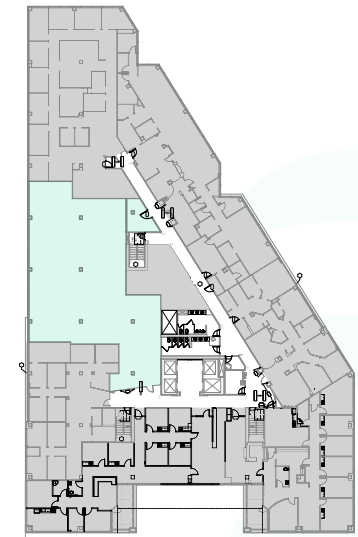
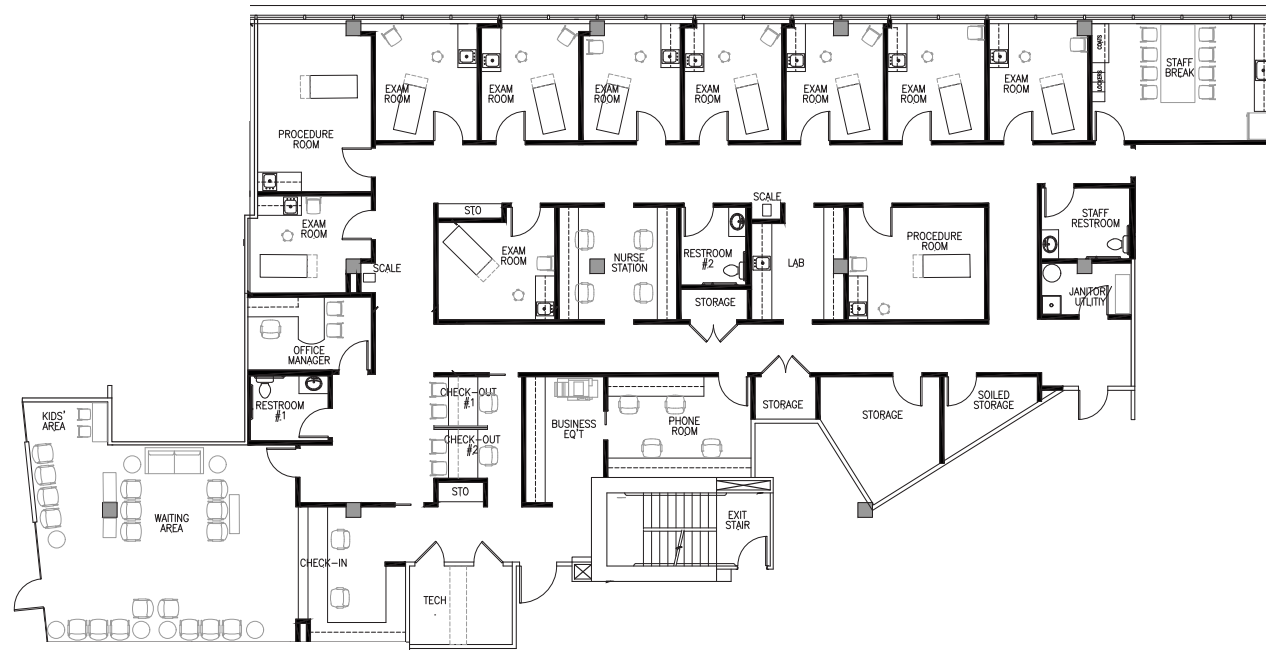
© 2024 CBRE, Inc. All rights reserved. This information has been obtained from sources believed reliable, but has not been verified for accuracy or completeness. You should conduct a careful, independent investigation of the property and verify all information. Any reliance on this information is solely at your own risk. CBRE and the CBRE logo are service marks of CBRE, Inc. All other marks displayed on this document are the property of their respective owners, and the use of such logos does not imply any affiliation with or endorsement of CBRE. Photos herein are the property of their respective owners. Use of these images without the express written consent of the owner is prohibited. PMStudio\_October2024

# Suite 304 | 6,857 RSF

of Class A Medical Outpatient Space



## Concept Plan - Clinic Space



KEY

MARCUS YAMAMOTO  
KATIE SMITH

Senior Vice President | [marcus.yamamoto@cbre.com](mailto:marcus.yamamoto@cbre.com) | +1 206 292 6062  
Senior Associate | [katie.m.smith@cbre.com](mailto:katie.m.smith@cbre.com) | +1 206 292 6012

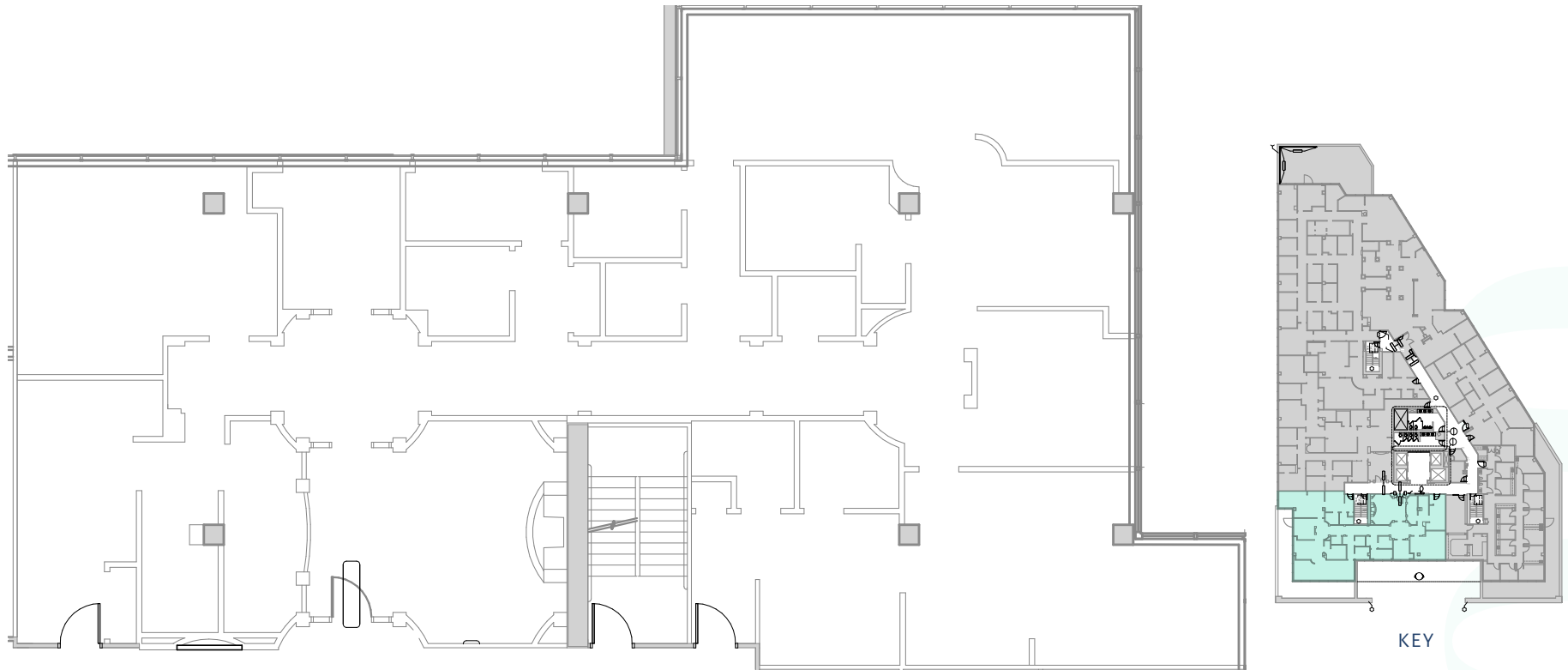
CBRE Healthpeak® | DOC  
LISTED  
NYSE

# Suite 490 | 3,846 RSF

of Class A Medical Outpatient Space



## As-Built Space Plan



MARCUS YAMAMOTO

Senior Vice President | [marcus.yamamoto@cbre.com](mailto:marcus.yamamoto@cbre.com) | +1 206 292 6062

KATIE SMITH

Senior Associate | [katie.m.smith@cbre.com](mailto:katie.m.smith@cbre.com) | +1 206 292 6012

**CBRE** Healthpeak® | DOC  
LISTED  
NYSE

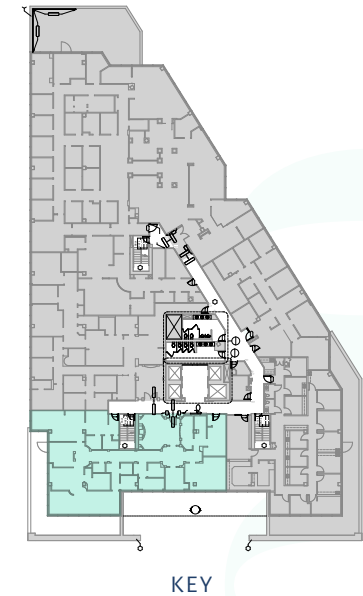
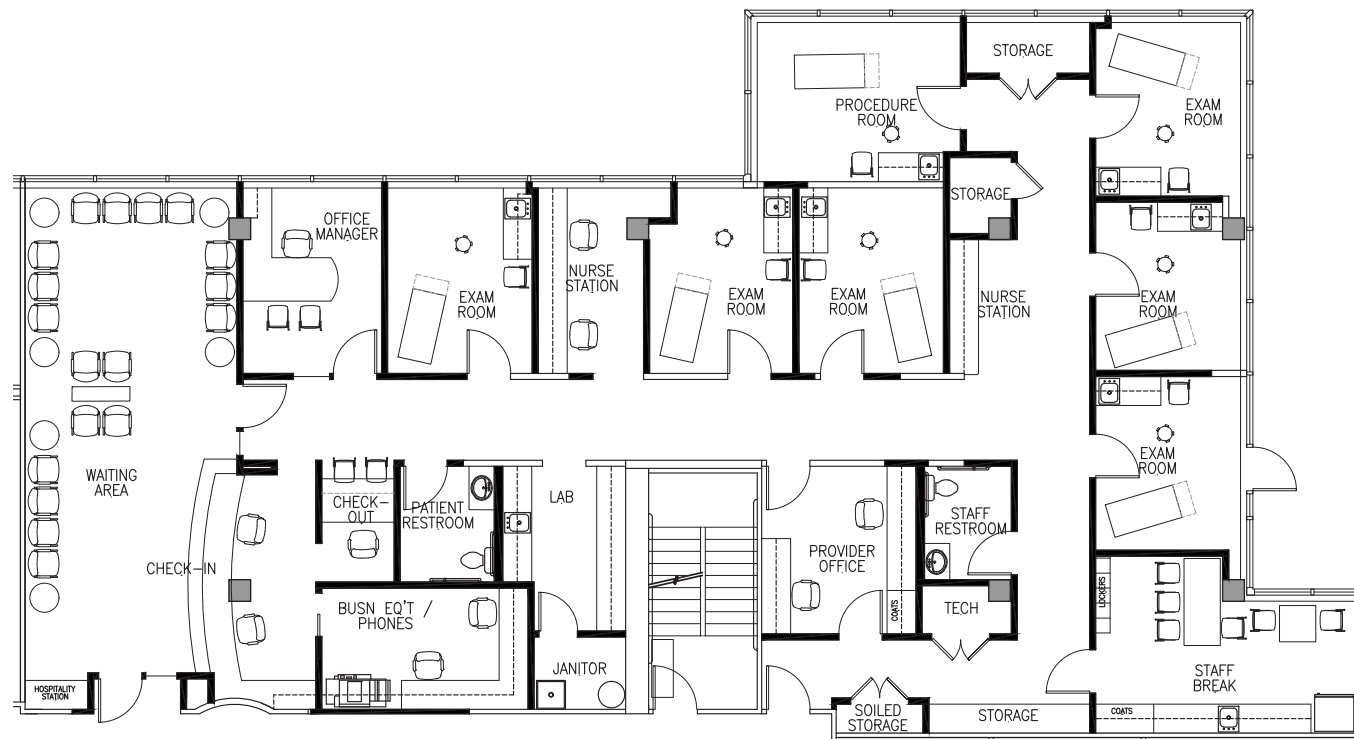
© 2024 CBRE, Inc. All rights reserved. This information has been obtained from sources believed reliable, but has not been verified for accuracy or completeness. You should conduct a careful, independent investigation of the property and verify all information. Any reliance on this information is solely at your own risk. CBRE and the CBRE logo are service marks of CBRE, Inc. All other marks displayed on this document are the property of their respective owners, and the use of such logos does not imply any affiliation with or endorsement of CBRE. Photos herein are the property of their respective owners. Use of these images without the express written consent of the owner is prohibited. PMStudio\_October2024

# Suite 490 | 3,846 RSF

of Class A Medical Outpatient Space



## Concept Plan - Medical



MARCUS YAMAMOTO  
KATIE SMITH

Senior Vice President | [marcus.yamamoto@cbre.com](mailto:marcus.yamamoto@cbre.com) | +1 206 292 6062  
Senior Associate | [katie.m.smith@cbre.com](mailto:katie.m.smith@cbre.com) | +1 206 292 6012

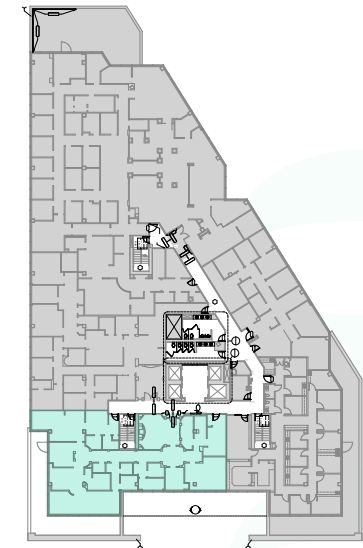
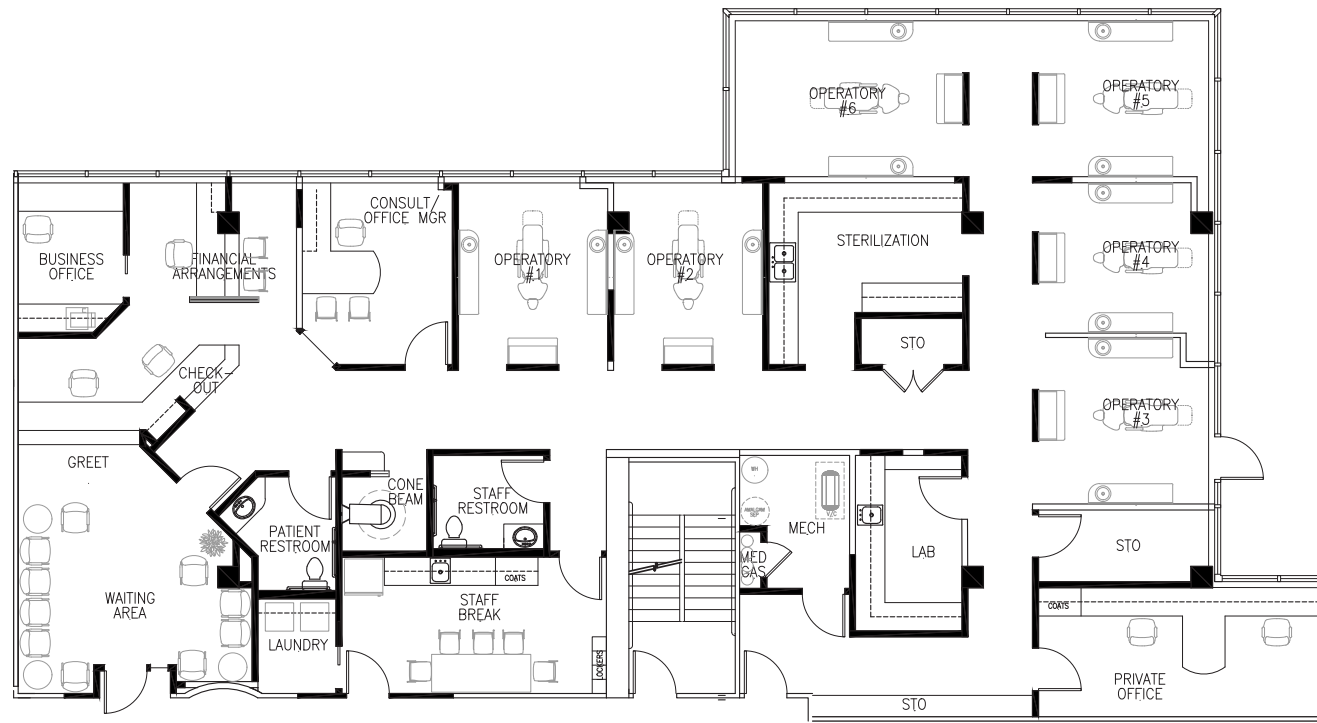
CBRE Healthpeak® | DOC  
ESTER  
NYSE

# Suite 490 | 3,846 RSF

of Class A Medical Outpatient Space



## Concept Plan - Dental



KEY

**MARCUS YAMAMOTO** Senior Vice President | [marcus.yamamoto@cbre.com](mailto:marcus.yamamoto@cbre.com) | +1 206 292 6062  
**KATIE SMITH** Senior Associate | [katie.m.smith@cbre.com](mailto:katie.m.smith@cbre.com) | +1 206 292 6012

**CBRE** Healthpeak® | DOC  
ESTER  
NYSE

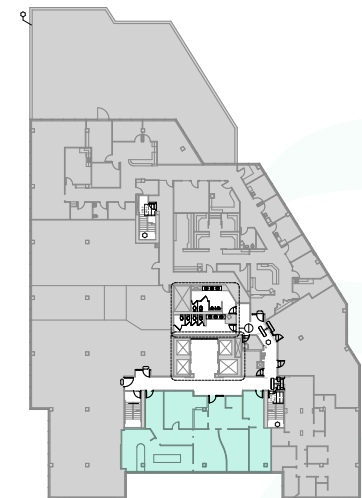
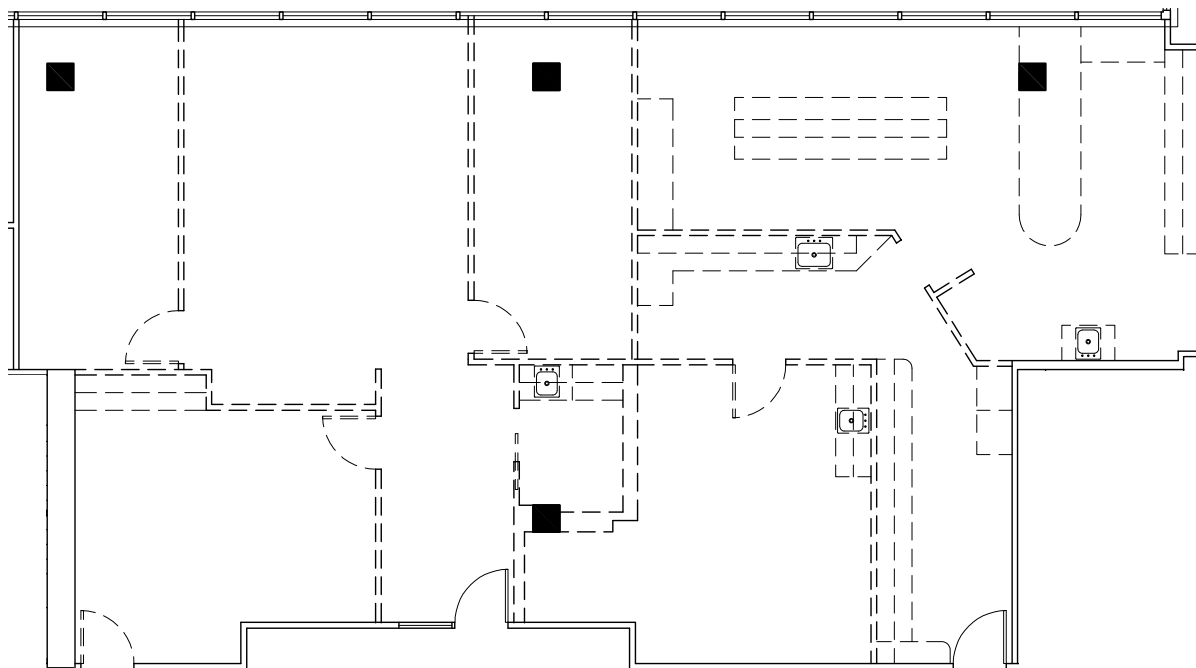


# Suite 510 | 2,115 RSF

of Class A Medical Outpatient Space



## As-Built Space Plan



KEY

MARCUS YAMAMOTO  
KATIE SMITH

Senior Vice President | [marcus.yamamoto@cbre.com](mailto:marcus.yamamoto@cbre.com) | +1 206 292 6062

Senior Associate | [katie.m.smith@cbre.com](mailto:katie.m.smith@cbre.com) | +1 206 292 6012

**CBRE** Healthpeak® | DOC  
LISTED  
NYSE

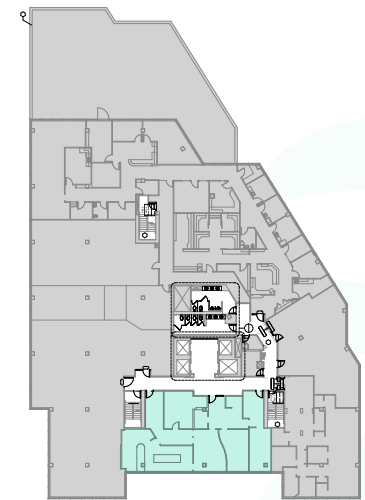
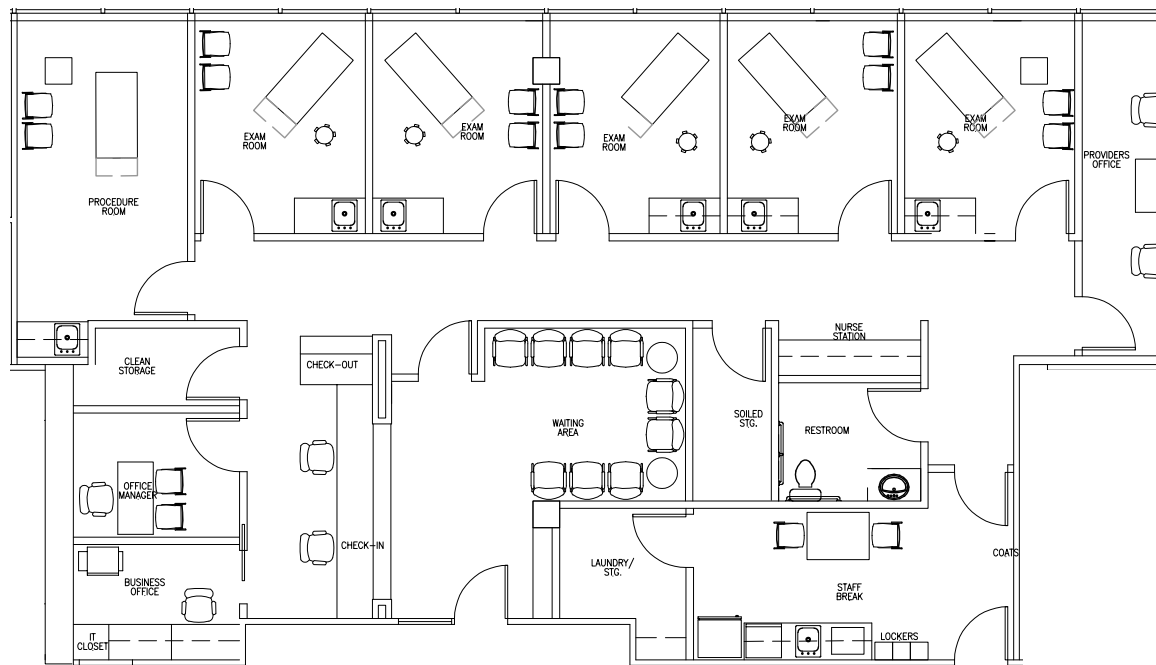
© 2024 CBRE, Inc. All rights reserved. This information has been obtained from sources believed reliable, but has not been verified for accuracy or completeness. You should conduct a careful, independent investigation of the property and verify all information. Any reliance on this information is solely at your own risk. CBRE and the CBRE logo are service marks of CBRE, Inc. All other marks displayed on this document are the property of their respective owners, and the use of such logos does not imply any affiliation with or endorsement of CBRE. Photos herein are the property of their respective owners. Use of these images without the express written consent of the owner is prohibited. PMStudio\_October2024

# Suite 510 | 2,115 RSF

of Class A Medical Outpatient Space



## Spec Suite Plan



KEY

**MARCUS YAMAMOTO** Senior Vice President | [marcus.yamamoto@cbre.com](mailto:marcus.yamamoto@cbre.com) | +1 206 292 6062  
**KATIE SMITH** Senior Associate | [katie.m.smith@cbre.com](mailto:katie.m.smith@cbre.com) | +1 206 292 6012

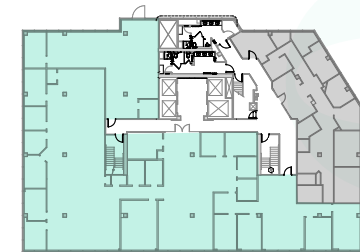
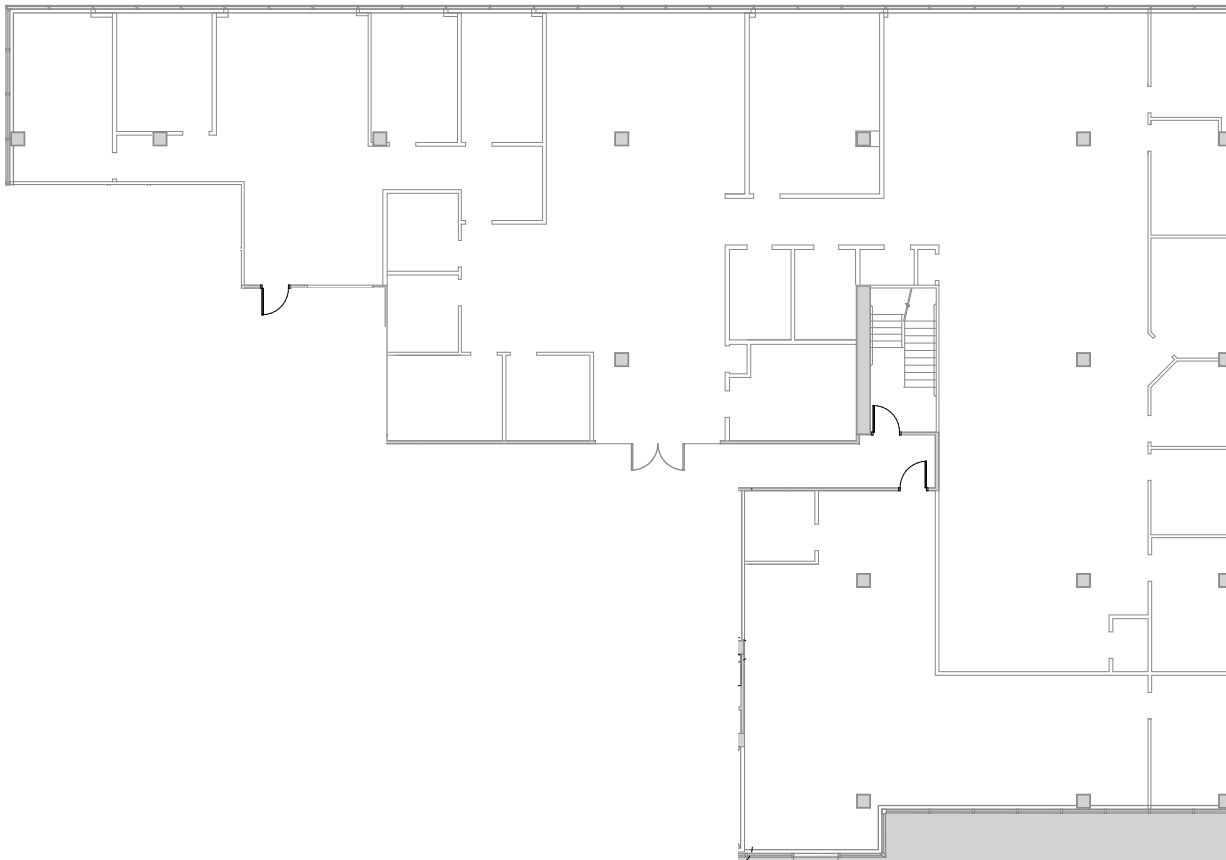
**CBRE** Healthpeak® | DOC  
LISTED  
NYSE

# Suite 610 | 8,706 RSF

of Class A Medical Outpatient Space



## As-Built Space Plan



KEY

MARCUS YAMAMOTO

Senior Vice President | [marcus.yamamoto@cbre.com](mailto:marcus.yamamoto@cbre.com) | +1 206 292 6062

KATIE SMITH

Senior Associate | [katie.m.smith@cbre.com](mailto:katie.m.smith@cbre.com) | +1 206 292 6012

**CBRE** Healthpeak® | DOC  
LISTED  
NYSE

© 2024 CBRE, Inc. All rights reserved. This information has been obtained from sources believed reliable, but has not been verified for accuracy or completeness. You should conduct a careful, independent investigation of the property and verify all information. Any reliance on this information is solely at your own risk. CBRE and the CBRE logo are service marks of CBRE, Inc. All other marks displayed on this document are the property of their respective owners, and the use of such logos does not imply any affiliation with or endorsement of CBRE. Photos herein are the property of their respective owners. Use of these images without the express written consent of the owner is prohibited. PMStudio\_October2024