

WULFF INDUSTRIAL PARK



*Industrial Space
For Lease*

6,940
AVAILABLE SF

1,027
OFFICE SF

16'
CLEAR HEIGHT

6,940 SF total

1,027 SF office area

3 dock-high / 1 grade-level

16' clear height

Ample parking

Beautiful corporate image

277/480 volt 3-phase power

Available January 1, 2025

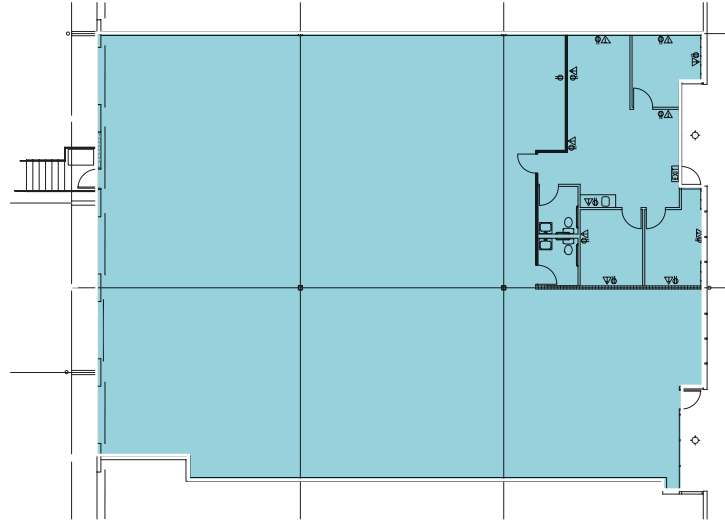
DOUG KLEIN, SIOR
206.248.7348
doug.klein@kidder.com

TRAVIS STANAWAY
206.248.6526
travis.stanaway@kidder.com

KIDDER.COM

This information supplied herein is from sources we deem reliable. It is provided without any representation, warranty, or guarantee, expressed or implied as to its accuracy. Prospective Buyer or Tenant should conduct an independent investigation and verification of all matters deemed to be material, including, but not limited to, statements of income and expenses. Consult your attorney, accountant, or other professional advisor.

WULFF INDUSTRIAL PARK

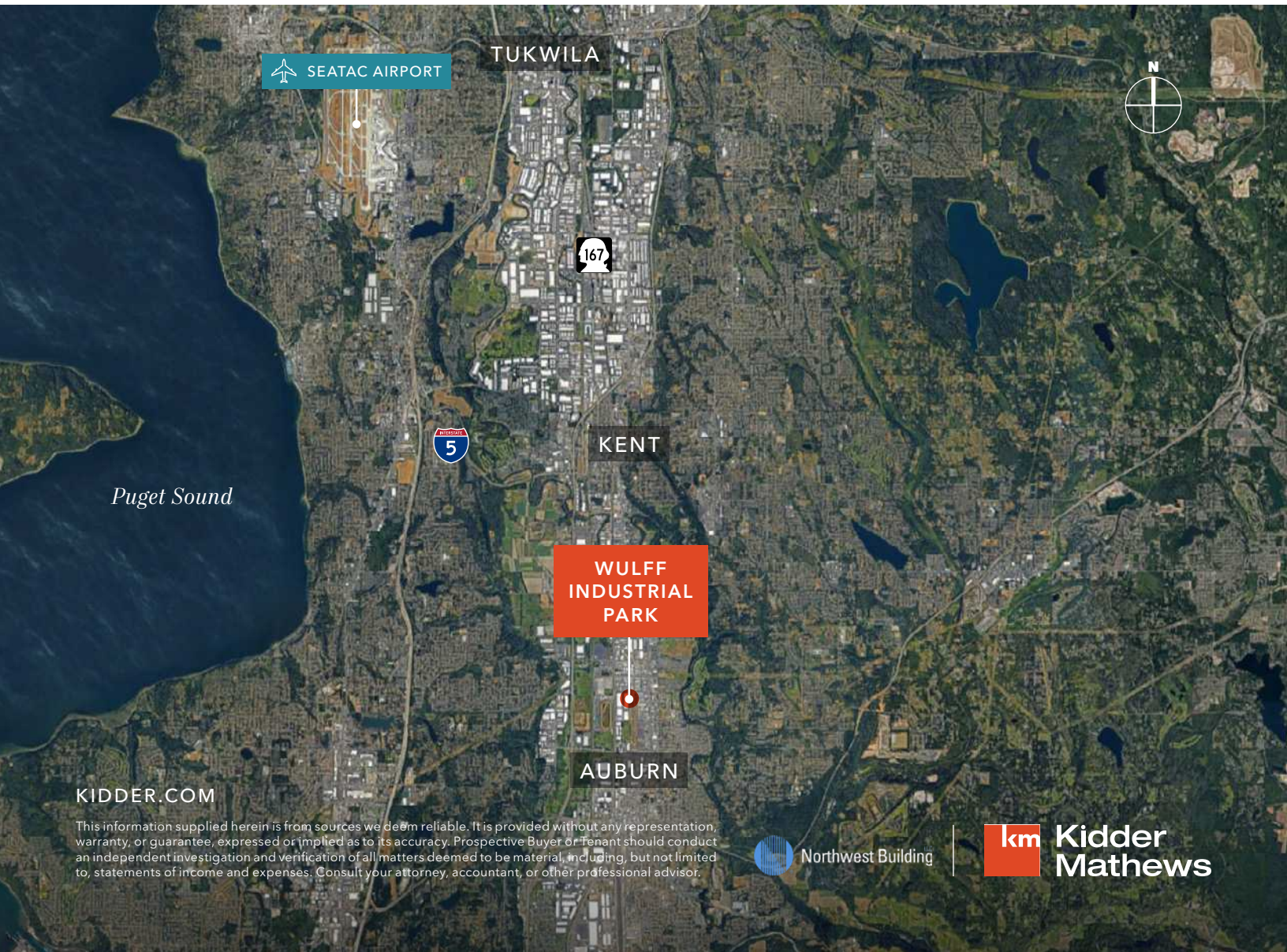


KIDDER.COM

This information supplied herein is from sources we deem reliable. It is provided without any representation, warranty, or guarantee, expressed or implied as to its accuracy. Prospective Buyer or Tenant should conduct an independent investigation and verification of all matters deemed to be material, including, but not limited to, statements of income and expenses. Consult your attorney, accountant, or other professional advisor.



WULFF INDUSTRIAL PARK



KIDDER.COM

This information supplied herein is from sources we deem reliable. It is provided without any representation, warranty, or guarantee, expressed or implied as to its accuracy. Prospective Buyer or Tenant should conduct an independent investigation and verification of all matters deemed to be material, including, but not limited to, statements of income and expenses. Consult your attorney, accountant, or other professional advisor.

