

WULFF INDUSTRIAL PARK



*Industrial Space
For Lease*

7,320
AVAILABLE SF

1,028
OFFICE SF

24'
CLEAR HEIGHT

7,320 SF total

1,028 SF office area

2 dock-high / 1 grade-level (oversized ramp)

24' clear height

Office area includes open area, two privates, breakroom and two restrooms

Available November 1, 2024

Please call for rates

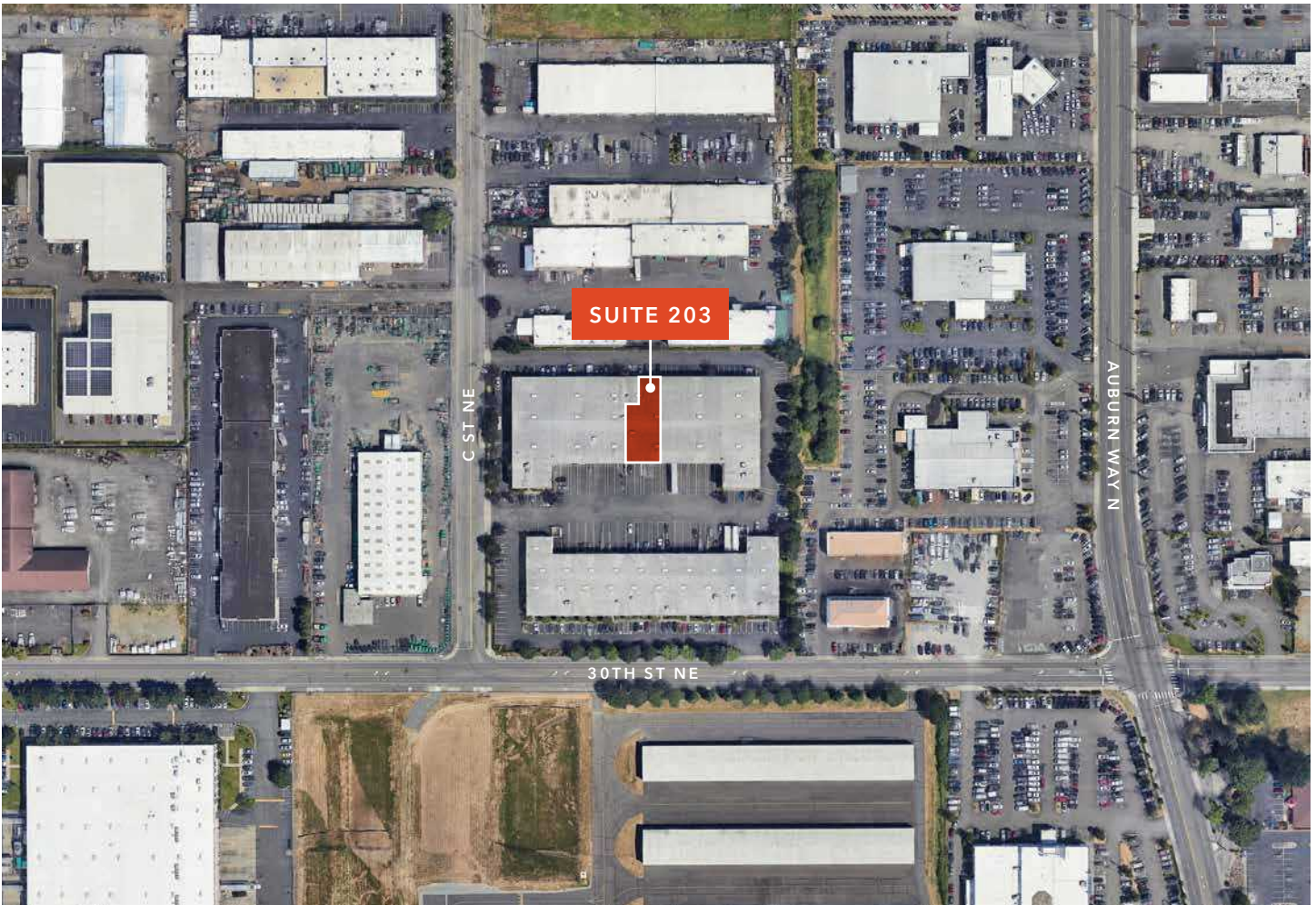
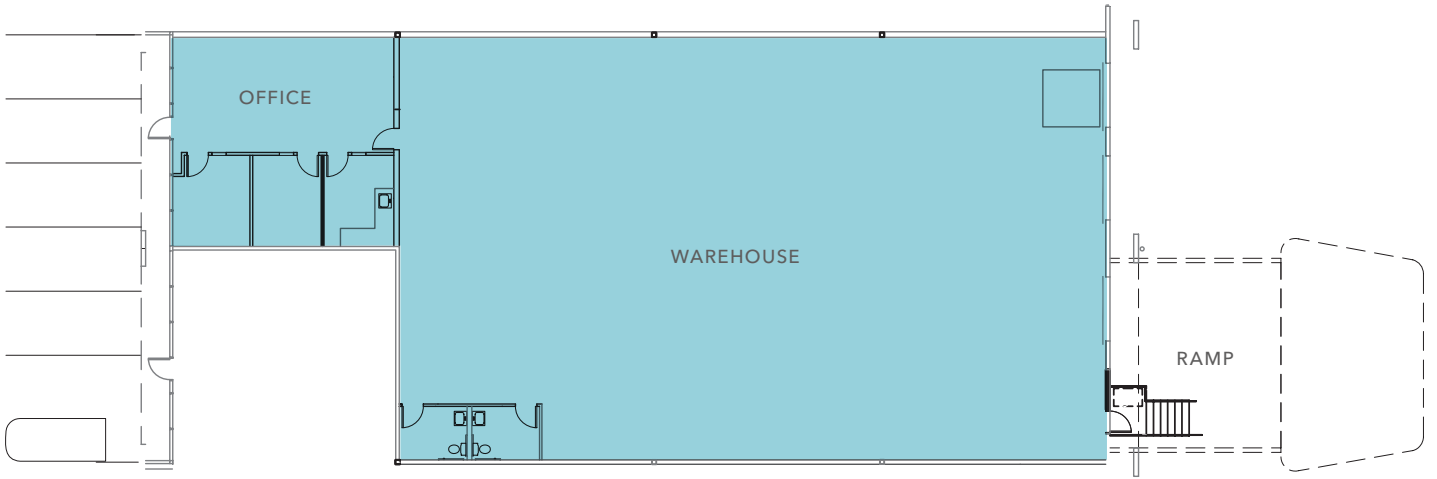
DOUG KLEIN, SIOR
206.248.7348
doug.klein@kidder.com

TRAVIS STANAWAY
206.248.6526
travis.stanaway@kidder.com

KIDDER.COM

This information supplied herein is from sources we deem reliable. It is provided without any representation, warranty, or guarantee, expressed or implied as to its accuracy. Prospective Buyer or Tenant should conduct an independent investigation and verification of all matters deemed to be material, including, but not limited to, statements of income and expenses. Consult your attorney, accountant, or other professional advisor.

WULFF INDUSTRIAL PARK

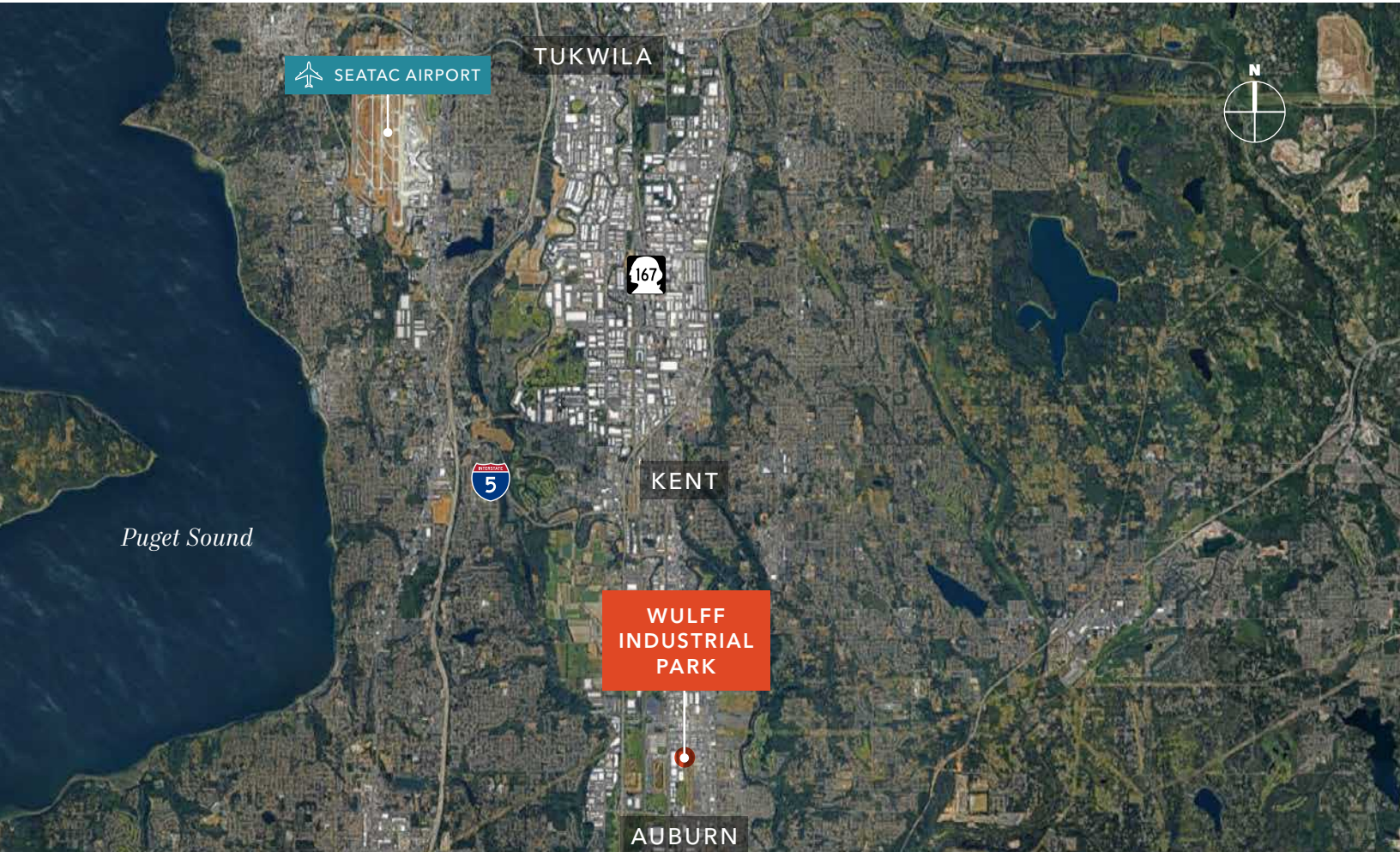


KIDDER.COM

This information supplied herein is from sources we deem reliable. It is provided without any representation, warranty, or guarantee, expressed or implied as to its accuracy. Prospective Buyer or Tenant should conduct an independent investigation and verification of all matters deemed to be material, including, but not limited to, statements of income and expenses. Consult your attorney, accountant, or other professional advisor.



WULFF INDUSTRIAL PARK



KIDDER.COM

This information supplied herein is from sources we deem reliable. It is provided without any representation, warranty, or guarantee, expressed or implied as to its accuracy. Prospective Buyer or Tenant should conduct an independent investigation and verification of all matters deemed to be material, including, but not limited to, statements of income and expenses. Consult your attorney, accountant, or other professional advisor.

