

FOR LEASE

LYNDEN RETAIL SPACE

8082 Guide Meridian, Suite 103, WA 98264



CBA Listing #: 40928368

 LoopNet™

The information supplied herein is from sources we deem reliable. It is provided without any representation, warranty or guarantee, expressed or implied as to its accuracy. Prospective Buyer or Tenant should conduct an independent investigation and verifications of all matters deemed to be material including but not limited to statements of income and expenses. Consult your attorney or accountant or other professional advisors.

↓
1
↑

8082 GUIDE MERIDIAN, SUITE 103, LYNDEN, WA

EXCLUSIVELY LISTED BY:

Troy C. Muljat
CCIM, CPM
360.820.2000
troy@muljat.com


MULJAT GROUP
COMMERCIAL
MULTI-FAMILY · RETAIL · INDUSTRIAL · OFFICE



This Offering Memorandum has been prepared by Muljat Group Commercial for use by a limited number of parties and has been obtained from sources believed reliable. While we do not doubt its accuracy, we have not verified it, and make no guarantee, warranty or representation about it. It is your responsibility to confirm, independently, its accuracy and completeness. All projections have been developed by Muljat Group Commercial, Seller and designated sources, are based upon assumptions relating to the general economy, competition, and other factors beyond control of Owner, and therefore are subject to variation. No representation is made by Muljat Group Commercial or Owner as to the accuracy or completeness of the information contained herein, and nothing contained herein is or shall be relied on as a promise or presentation as to the future performance of the Property. Although the information contained herein is believed to be correct, Owner and its employees disclaim any responsibility for inaccuracies and expect prospective purchasers to exercise independent due diligence in verifying all such information. Further, Muljat Group Commercial, Owner, and its employees disclaim any and all liability for representations and warranties, expressed or implied, contained in, or for omissions from, the Offering Memorandum or any other written or oral communication transmitted or made available to the recipient.

Prospective tenants should be aware that Owner of the real property known as 8082 Guide Meridian, Suite 103, is leasing the Property in its "AS IS" condition with all faults, without representations or warranties of any kind or nature. Upon written request prior to and or after contracting to lease, as appropriate, tenant will be given reasonable opportunity to inspect and investigate the Property and all improvements therein, either independently or through agents of tenants choosing. Prospective tenants shall be responsible for their costs and expenses of investigating the Property and all other expenses, professional or otherwise, incurred by them. In addition to the first sentence of this paragraph, but without limiting the generality thereof, tenant shall not be entitled to and should not rely on Owner or its affiliates or its agents as to (i) the quality, nature, adequacy, and physical condition of the Property, including but not limited to, the structural elements, foundation, roof, appurtenances, access, landscaping, parking facilities, the electrical, HVAC, plumbing, sewage, and utility systems, facilities and appliances; (ii) the quality, nature, adequacy, and physical condition of soils, ground water, and geology; (iii) the existence, quality, nature, adequacy and physical condition of utilities serving the Property; (iv) the development potential of the Property, its habitability, merchantability, fitness, suitability, or adequacy of the Property for any particular purpose; (v) the zoning or the legal status of the Property; (vi) the Property's or its operation's compliance with applicable codes, laws, regulations, statutes, ordinances, covenants, conditions, restrictions of any governmental, quasi-governmental entity, or any other person or entity; (vii) the quality of any labor or materials furnished at or to the Property; (viii) the compliance of the Property with any environmental protection, pollution, or land use laws, rules, regulations, orders, or requirements, including, but not limited to, those pertaining to the handling, generating, storing, or disposing of any hazardous materials, or the Americans with Disabilities Act; and (ix) except as expressly provided otherwise in an executed contract of sale, the condition of title and the nature, status, and extent of any right-of-way, lease, right of retention, possession, lien, encumbrance, license, reservation, covenant, condition, restriction, and any other matter affecting the title. Although the Owner may have performed work, or contracted for work performed by related and or third parties in connection with the Property, Owner and its agents shall not be responsible to tenant or any successor on account of any errors or omissions or construction defects of such predecessors and or related third parties.

The Offering Memorandum does not constitute a representation that there has been no change in the business or affairs of the Property or Owner since the date of preparation of the Offering Memorandum. Analysis and verification of the information contained in the Offering Memorandum is solely the responsibility of the prospective tenant.

Owner and Muljat Group Commercial each expressly reserve the right, at their sole discretion, to reject any or all expressions of interest or offers regarding the Property and or terminate discussions with any entity at any time with or without notice. Owner shall have no legal commitment or obligation to any entity reviewing this Offering Memorandum or making an offer to lease the Property unless and until such offer is approved by Owner a written agreement for the leasing of the Property has been fully executed, delivered and approved by Owner and its legal counsel, and any obligations set by Owner thereunder have been satisfied or waived.

Any offer to Owner must be (i) presented in the form of a non-binding Letter of Intent, (ii) incorporated in a formal written contract to lease to be prepared by Owner and executed by both parties, and (iii) approved by Owner before the transaction becomes binding on either party. Neither the prospective tenant nor the Owner shall be bound until execution of the contract of a lease, which contract shall supersede prior discussions and writings and shall constitute the sole agreement of the parties.

This Offering Memorandum and the contents, except such information, which is a matter of public record or is provided in sources available to the public, are of a confidential nature and furnished solely for the purpose of considering the purchase of real property described herein. By accepting this Offering Memorandum, you agree that you will hold and treat it in the strictest confidence, that you will not disclose this Offering Memorandum or any of the contents to any other entity (except to outside advisors retained by you, if necessary, for your determination of whether or not to make a proposal and from whom you have obtained an agreement of confidentiality) without the express prior written consent of Owner or Muljat Group Commercial and that you will use the information in this Offering Memorandum or any of its content in any fashion or manner detrimental to the interest of Owner or Muljat Group Commercial. If you have no interest in the Property, please return the Offering Memorandum forthwith.

The information supplied herein is from sources we deem reliable. It is provided without any representation, warranty or guarantee, expressed or implied as to its accuracy. Prospective Buyer or Tenant should conduct an independent investigation and verifications of all matters deemed to be material including but not limited to statements of income and expenses. Consult your attorney or accountant or other professional advisors.

8082 GUIDE MERIDIAN, SUITE 103, LYNDEN, WA

EXCLUSIVELY LISTED BY:

Troy C. Muljat
CCIM, CPM
360.820.2000
troy@muljat.com



MULJAT GROUP
 COMMERCIAL
 MULTI-FAMILY · RETAIL · INDUSTRIAL · OFFICE

OFFERING SUMMARY

SUITE 103

1,001 SF +/-

Lease Space Size
(Proposed Office/Retail Space)

\$24.00/SF + NNN

Lease Rate

\$11.00/SF/YR

Estimated NNNs

(Includes Water/Sewer/Storm)

\$2,919.58

Total Estimated Monthly Rent
(Base Rent + NNNs for 2,392 SF)

SUITE 104

1,061 SF +/-

Lease Space Size
(Restaurant Space)

\$24.00/SF + NNN

Lease Rate

\$11.00/SF/YR

Estimated NNNs

(Includes Water/Sewer/Storm)

\$3,094.58

Total Estimated Monthly Rent
(Base Rent + NNNs for 2,392 SF)

The information supplied herein is from sources we deem reliable. It is provided without any representation, warranty or guarantee, expressed or implied as to its accuracy. Prospective Buyer or Tenant should conduct an independent investigation and verifications of all matters deemed to be material including but not limited to statements of income and expenses. Consult your attorney or accountant or other professional advisors.

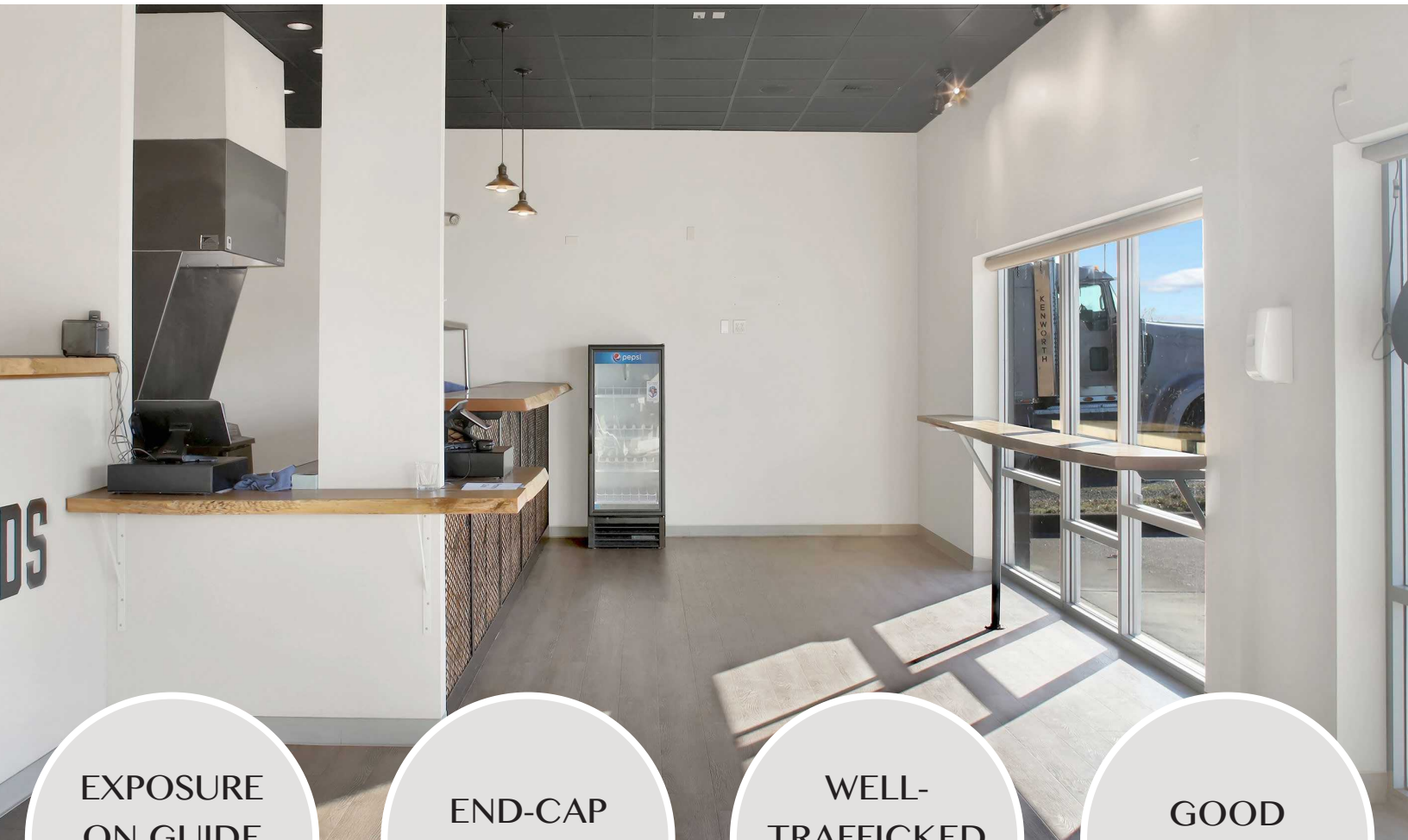
8082 GUIDE MERIDIAN, SUITE 103, LYNDEN, WA

3

EXCLUSIVELY LISTED BY:

Troy C. Muljat
CCIM, CPM
360.820.2000
troy@muljat.com





EXPOSURE
ON GUIDE
MERIDIAN

END-CAP
UNIT

WELL-
TRAFFICKED
AREA

GOOD
ACCESS

PROPERTY DESCRIPTION

Turn-key restaurant space in a prominent location on the Guide Meridian. Option to divide the space into a smaller 1,061 SF +/- restaurant space and a 1,001 SF +/- office/retail space. Plenty of parking and good access. The retail center is anchored by Starbucks, next to Rite Aid, and across from Safeway and Grocery Outlet. The Guide Meridian connects Bellingham and Canada and is a main artery for Lynden; this portion of the Guide Meridian is an especially well-trafficked retail area.

The information supplied herein is from sources we deem reliable. It is provided without any representation, warranty or guarantee, expressed or implied as to its accuracy. Prospective Buyer or Tenant should conduct an independent investigation and verifications of all matters deemed to be material including but not limited to statements of income and expenses. Consult your attorney or accountant or other professional advisors.

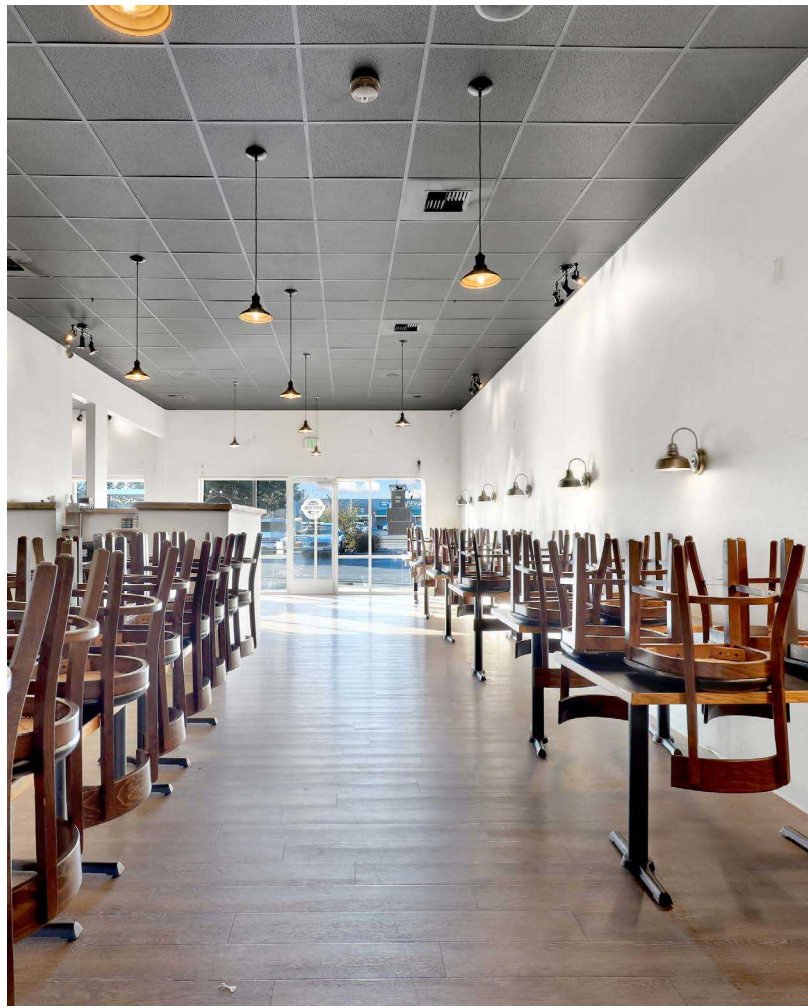
8082 GUIDE MERIDIAN, SUITE 103, LYNDEN, WA



EXCLUSIVELY LISTED BY:

Troy C. Muljat
CCIM, CPM
360.820.2000
troy@muljat.com





The information supplied herein is from sources we deem reliable. It is provided without any representation, warranty or guarantee, expressed or implied as to its accuracy. Prospective Buyer or Tenant should conduct an independent investigation and verifications of all matters deemed to be material including but not limited to statements of income and expenses. Consult your attorney or accountant or other professional advisors.

8082 GUIDE MERIDIAN, SUITE 103, LYNDEN, WA

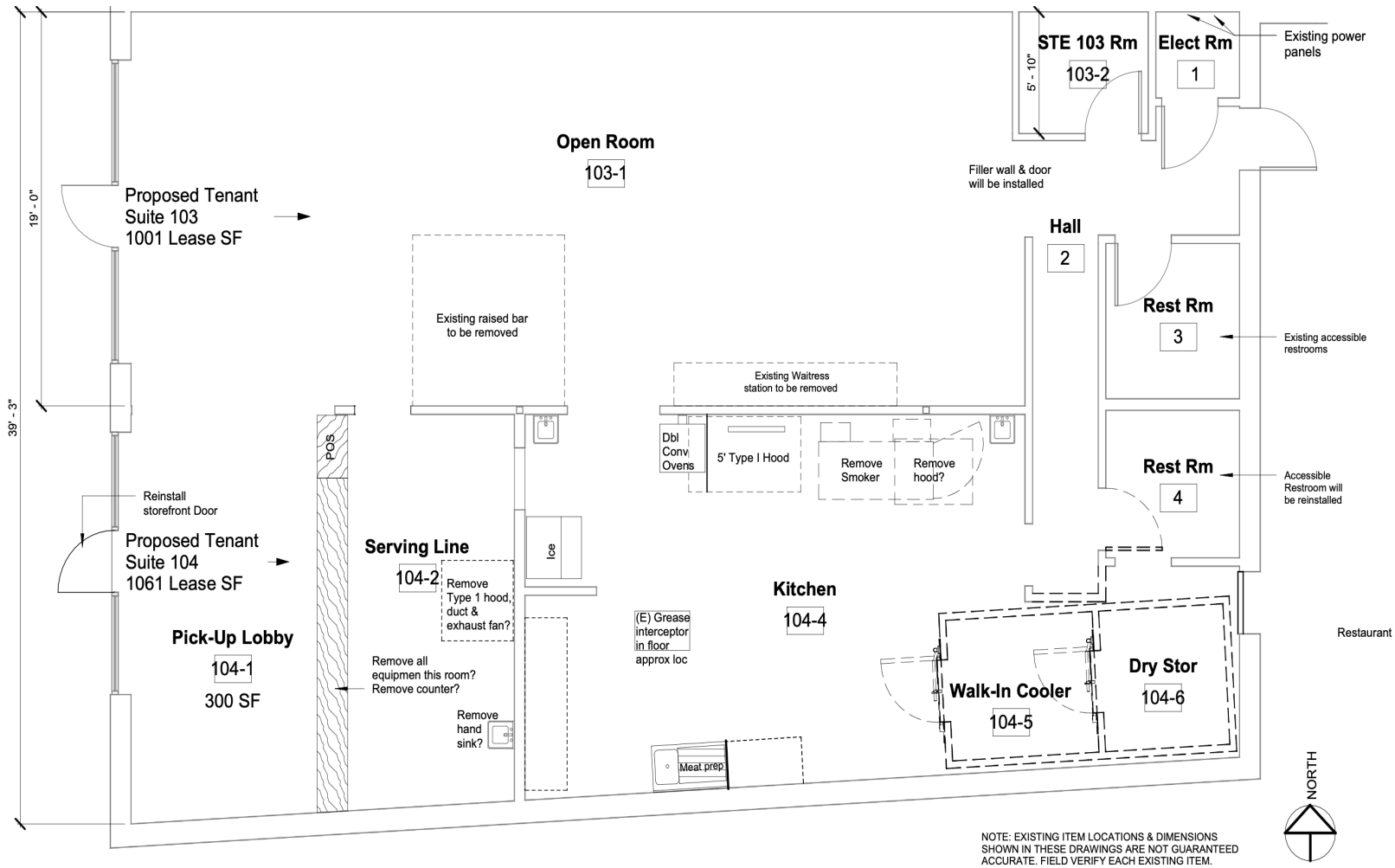
5

EXCLUSIVELY LISTED BY:

Troy C. Muljat
CCIM, CPM
360.820.2000
troy@muljat.com



CURRENT FLOOR PLAN



CURRENT RESTAURANT CONFIGURATION: 2,392 SF +/-

The information supplied herein is from sources we deem reliable. It is provided without any representation, warranty or guarantee, expressed or implied as to its accuracy. Prospective Buyer or Tenant should conduct an independent investigation and verifications of all matters deemed to be material including but not limited to statements of income and expenses. Consult your attorney or accountant or other professional advisors.

6

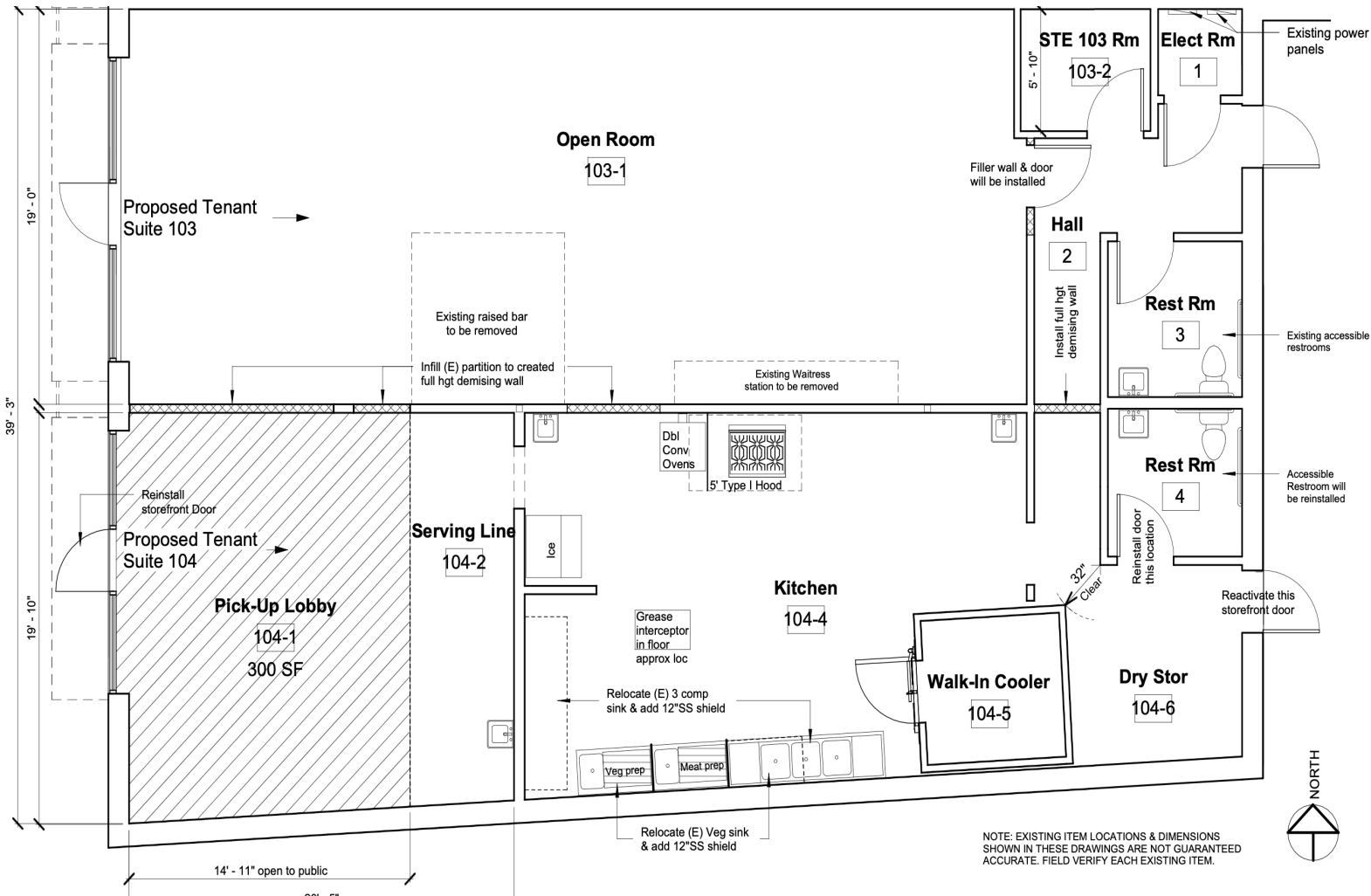
8082 GUIDE MERIDIAN, SUITE 103, LYNDEN, WA

EXCLUSIVELY LISTED BY:

Troy C. Muljat
CCIM, CPM
360.820.2000
troy@muljat.com



DEMISING FLOOR PLAN



103: PROPOSED 1,001 SF +/- OFFICE/RETAIL SPACE

104: PROPOSED 1,061 SF +/- RESTAURANT SPACE

The information supplied herein is from sources we deem reliable. It is provided without any representation, warranty or guarantee, expressed or implied as to its accuracy. Prospective Buyer or Tenant should conduct an independent investigation and verifications of all matters deemed to be material including but not limited to statements of income and expenses. Consult your attorney or accountant or other professional advisors.

8082 GUIDE MERIDIAN, SUITE 103, LYNDEN, WA

EXCLUSIVELY LISTED BY:

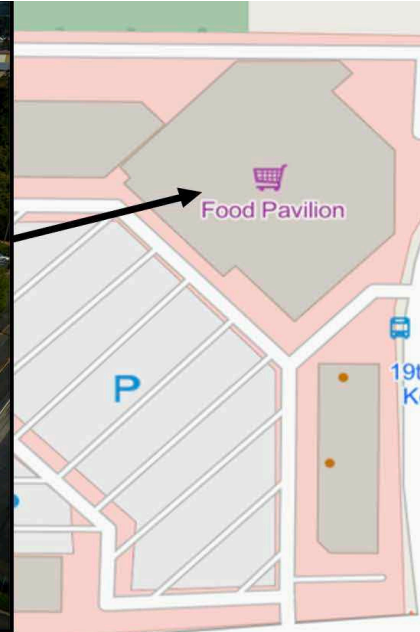
Troy C. Muljat
CCIM, CPM
360.820.2000
troy@muljat.com



MULJAT GROUP
 COMMERCIAL
 MULTI-FAMILY · RETAIL · INDUSTRIAL · OFFICE

RETAILERS NEARBY

Food Pavilion Shopping



Safeway Shopping Center



Lynden Retail Center



The information supplied herein is from sources we deem reliable. It is provided without any representation, warranty or guarantee, expressed or implied as to its accuracy. Prospective Buyer or Tenant should conduct an independent investigation and verifications of all matters deemed to be material including but not limited to statements of income and expenses. Consult your attorney or accountant or other professional advisors.

8082 GUIDE MERIDIAN, SUITE 103, LYNDEN, WA

EXCLUSIVELY LISTED BY:

Troy C. Muljat
CCIM, CPM
360.820.2000
troy@muljat.com



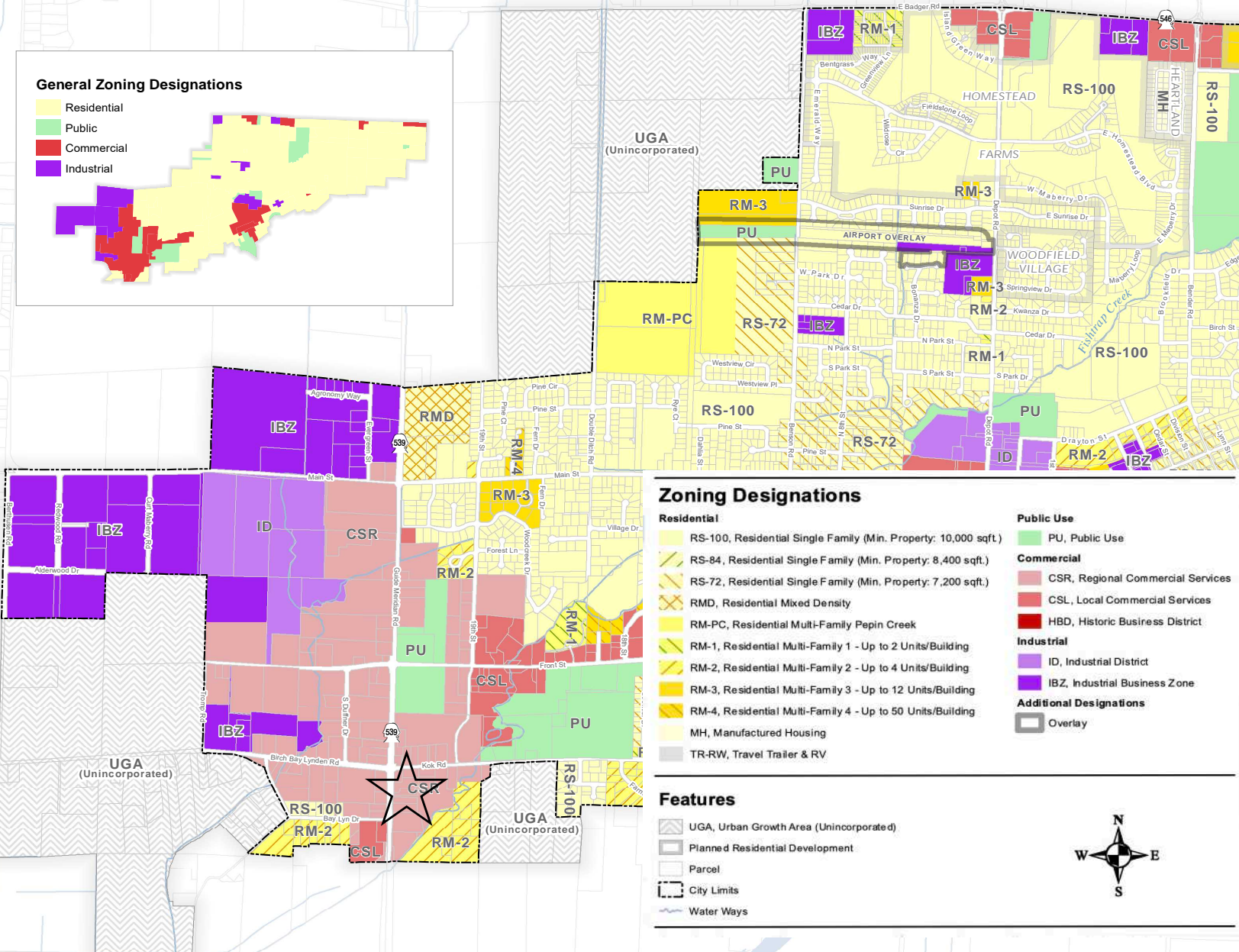
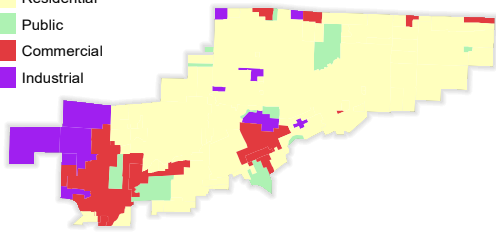
MULJAT GROUP
 COMMERCIAL
 MULTI-FAMILY · RETAIL · INDUSTRIAL · OFFICE

ZONING MAP

Zoning City of Lynden

General Zoning Designations

- Residential
- Public
- Commercial
- Industrial



Zoning Designations

- | | |
|--|---|
| <p>Residential</p> <ul style="list-style-type: none"> RS-100, Residential Single Family (Min. Property: 10,000 sqft.) RS-84, Residential Single Family (Min. Property: 8,400 sqft.) RS-72, Residential Single Family (Min. Property: 7,200 sqft.) RMD, Residential Mixed Density RM-PC, Residential Multi-Family Papin Creek RM-1, Residential Multi-Family 1 - Up to 2 Units/Building RM-2, Residential Multi-Family 2 - Up to 4 Units/Building RM-3, Residential Multi-Family 3 - Up to 12 Units/Building RM-4, Residential Multi-Family 4 - Up to 50 Units/Building MH, Manufactured Housing TR-RW, Travel Trailer & RV | <p>Public Use</p> <ul style="list-style-type: none"> PU, Public Use <p>Commercial</p> <ul style="list-style-type: none"> CSR, Regional Commercial Services CSL, Local Commercial Services HBD, Historic Business District <p>Industrial</p> <ul style="list-style-type: none"> ID, Industrial District IBZ, Industrial Business Zone <p>Additional Designations</p> <ul style="list-style-type: none"> Overlay |
|--|---|

Features

- UGA, Urban Growth Area (Unincorporated)
- Planned Residential Development
- Parcel
- City Limits
- Water Ways



Effective: Thursday, June 3, 2021

The City of Lynden has compiled this information for its own use and is not responsible for any use of this information by others and disclaims any warranty of accuracy or warranty of fitness for any particular purpose, either express or implied. The information found herein is provided simply as a courtesy to the public and is not intended for any third party use in any official, professional or other authoritative capacity. Persons using this information do so at their own risk and shall agree to defend, indemnify and hold harmless the City of Lynden as to any claims, damages, liability, losses or suits arising out of such use.

The information supplied herein is from sources we deem reliable. It is provided without any representation, warranty or guarantee, expressed or implied as to its accuracy. Prospective Buyer or Tenant should conduct an independent investigation and verifications of all matters deemed to be material including but not limited to statements of income and expenses. Consult your attorney or accountant or other professional advisors.

EXCLUSIVELY LISTED BY:
Troy C. Muljat
 CCIM, CPM
 360.820.2000
 troy@muljat.com



DEMOGRAPHICS

LYNDEN, WA 98264

★ Location

Lynden is the second largest city in Whatcom County, located 15 miles north of the largest city in Whatcom County, Bellingham, and about 5 miles south of the Canadian Border. The city of Lynden is known for being the largest Dutch settlement in the state and one of the largest producers of raspberries in the nation.

Community

Established in 1874, Lynden has a long history best reflected by the Pioneer Museum and Jansen Art center located downtown. Lynden holds the annual Northwest Washington Fair and other local events and festivals, which reflect its tight knit community. Due to Lynden's supportive locals, the downtown has grown its presence of shops and restaurants to include nationally recognized tenants.

Natural Beauty

Mount Baker and the San Juan Islands are the backdrop to a vibrant recreational community and tourism sector. Whatcom County ranks fifth in the state for tourist spending.

15K



Population

\$66K

Median
Household
Income

44%

Bachelor's
Degree or
higher

35.3

Median Age

Sources: STDB.com, census.gov

The information supplied herein is from sources we deem reliable. It is provided without any representation, warranty or guarantee, expressed or implied as to its accuracy. Prospective Buyer or Tenant should conduct an independent investigation and verifications of all matters deemed to be material including but not limited to statements of income and expenses. Consult your attorney or accountant or other professional advisors.

9

8082 GUIDE MERIDIAN, SUITE 103, LYNDEN, WA

EXCLUSIVELY LISTED BY:

Troy C. Muljat
CCIM, CPM
360.820.2000
troy@muljat.com



MULJAT GROUP
COMMERCIAL
MULTI-FAMILY · RETAIL · INDUSTRIAL · OFFICE