

FOR LEASE \$3,500/MO + NNN



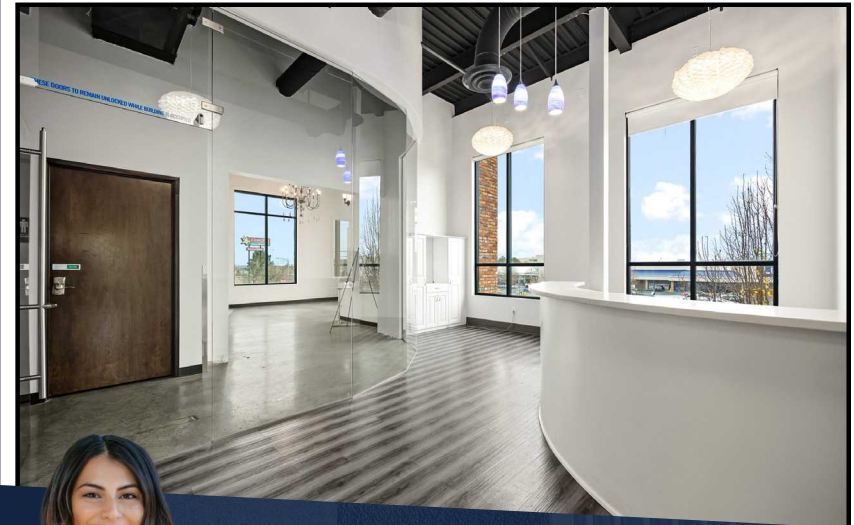
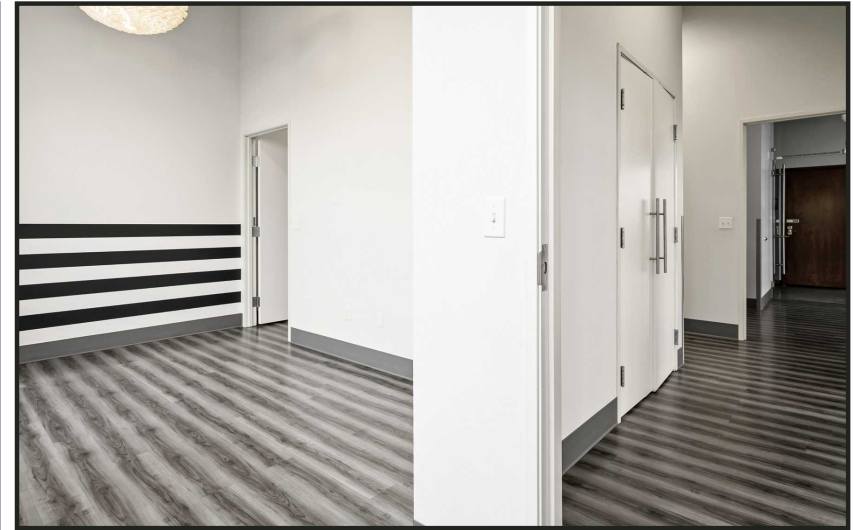
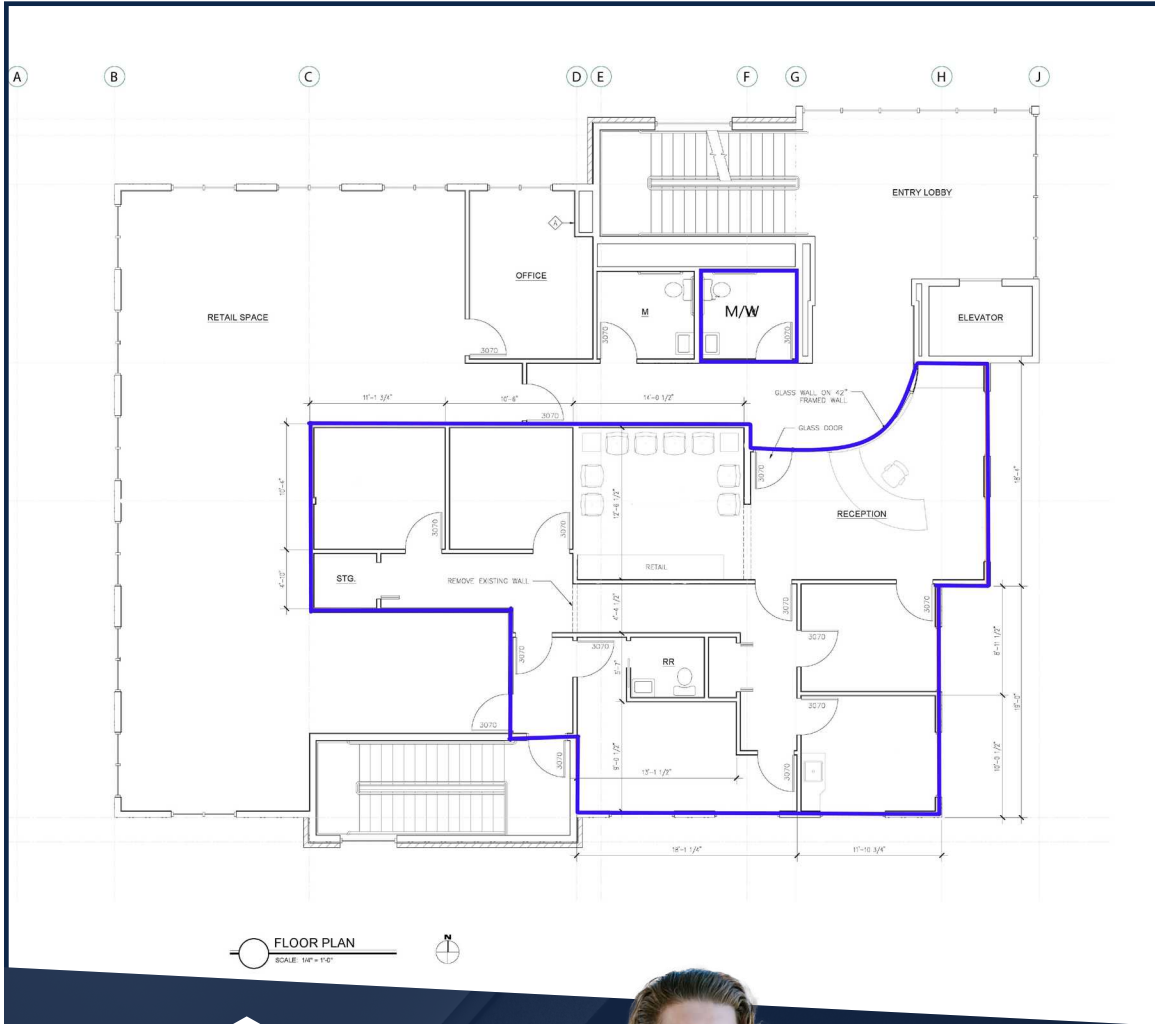
SECOND FLOOR OFFICE SUITE NOW FOR LEASE!

Nestled in a high-traffic retail hub near the mall, this newly constructed retail space offers exceptional visibility and a steady stream of potential customers, thanks to neighboring attractions like Proof Gastro Pub. It's an optimal location for businesses seeking to capitalize on the synergy of a bustling shopping center and the allure of established tenants. *MLS#272935*

- 1,904 RSF
- 5 offices + 2 restrooms
- Busy retail corridor
- 3-year term min +NNN

FOR LEASE \$3,500/MO + NNN

924 COLUMBIA CENTER BLVD. | Kennewick, WA.



DERRICK STRICKER
DESIGNATED BROKER



derrick@strickercre.com
509.591.9949



JAZMINE MURILLO
COMMERCIAL BROKER

jazmine@strickercre.com
509.591.9949

