

SOUTH LAKE UNION
CREATIVE OFFICE WITH VIEWS

1001 Westlake Avenue North, Seattle, WA 98109

AVAILABLE
NOW

For more information please contact:

LAURA MILLER

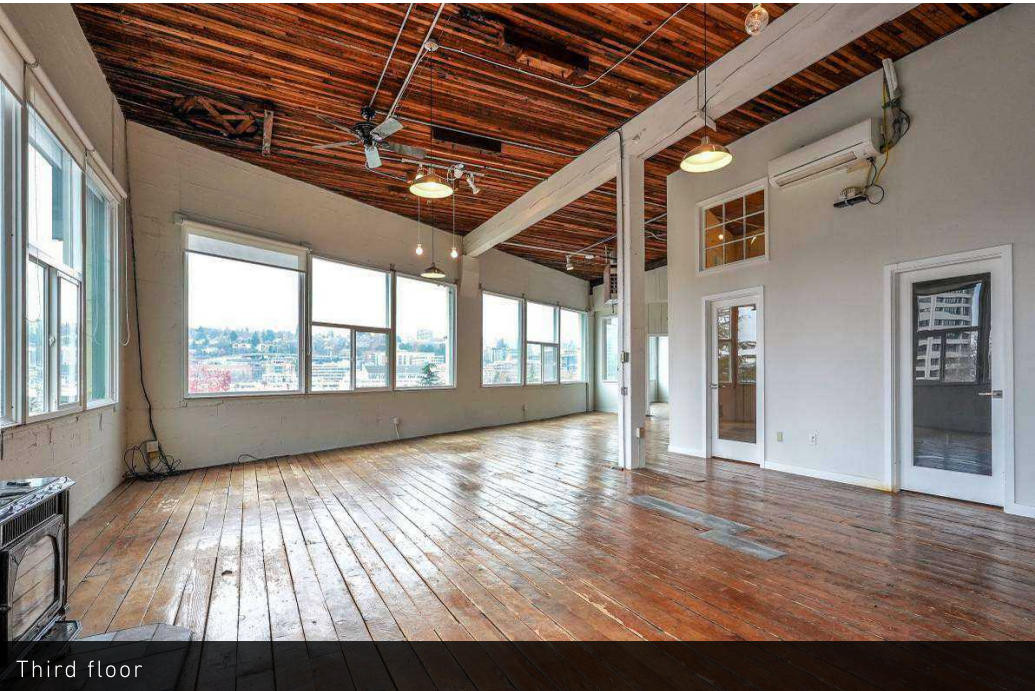
laura@gibraltarusa.com

206.351.3573

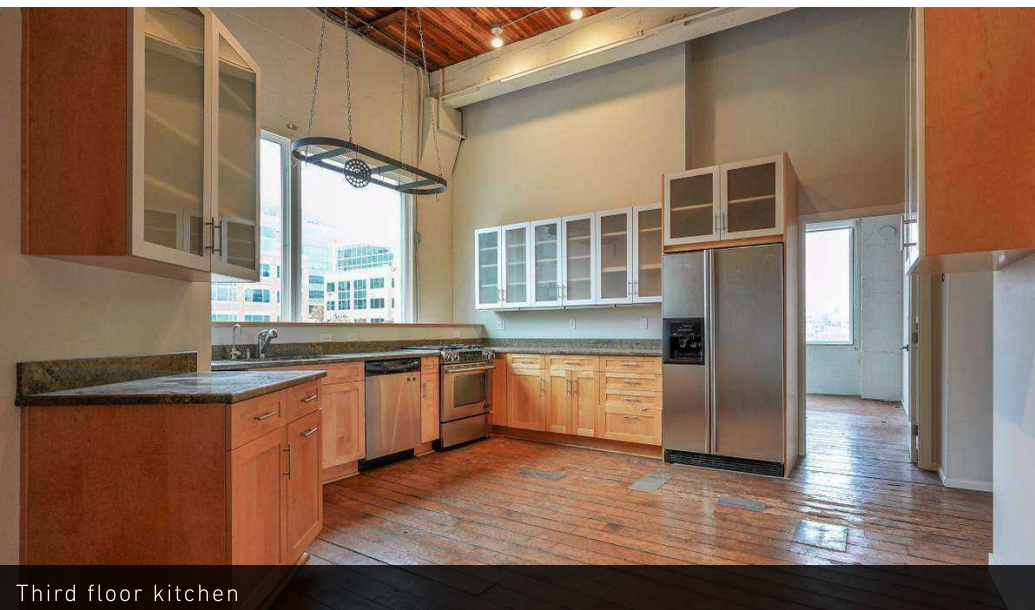
 **GIBRALTAR**
INVESTMENT PROPERTY SOLUTIONS

1001 WESTLAKE AVENUE NORTH, SEATTLE, WA 98109

CREATIVE OFFICE FOR LEASE



Third floor



Third floor kitchen

HIGHLIGHTS

- Available now. Full 2nd and 3rd (top two floors) floor creative offices located on the shores of the west side of Lake Union featuring stunning lake and city views
- Each floor is 6,200 SF (can be leased together or separately)
- Character rich spaces features abundant natural light, giant windows, high ceilings, original wood floors, and HVAC
- Mix of large open work areas and private offices, conference rooms, kitchens
- Freight elevator and stair access (no passenger elevator)
- Two parking stalls
- Rental Rate: \$19.50/SF/YR + NNN (\$3.00/SF). HVAC and utilities included in NNN.



77

TRANSIT SCORE



93

WALK SCORE



92

BIKE SCORE



69,945

TOTAL POPULATION



43,708

TOTAL HOUSEHOLDS



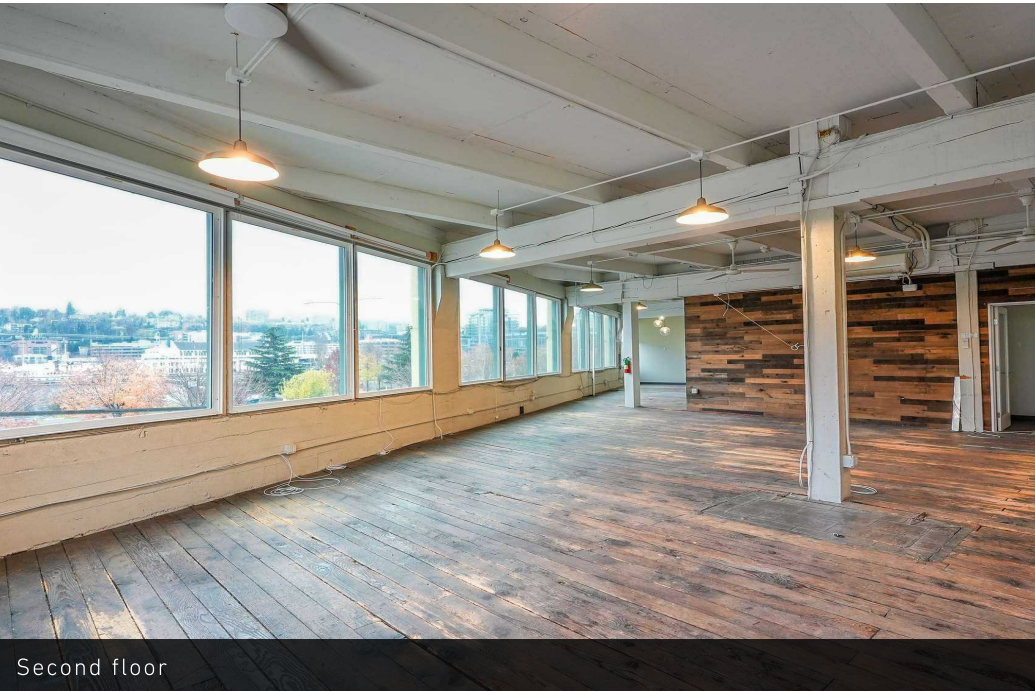
\$116,979

MEDIAN INCOME

* Demographic data derived from 2024, 1 mile radius

1001 WESTLAKE AVENUE NORTH, SEATTLE, WA 98109

CREATIVE OFFICE FOR LEASE



Second floor



Lake Union views



Second floor kitchen



Second floor

CREATIVE OFFICE FOR LEASE



WORKING STATION



LOUNGE



TELEPHONE BOOTH



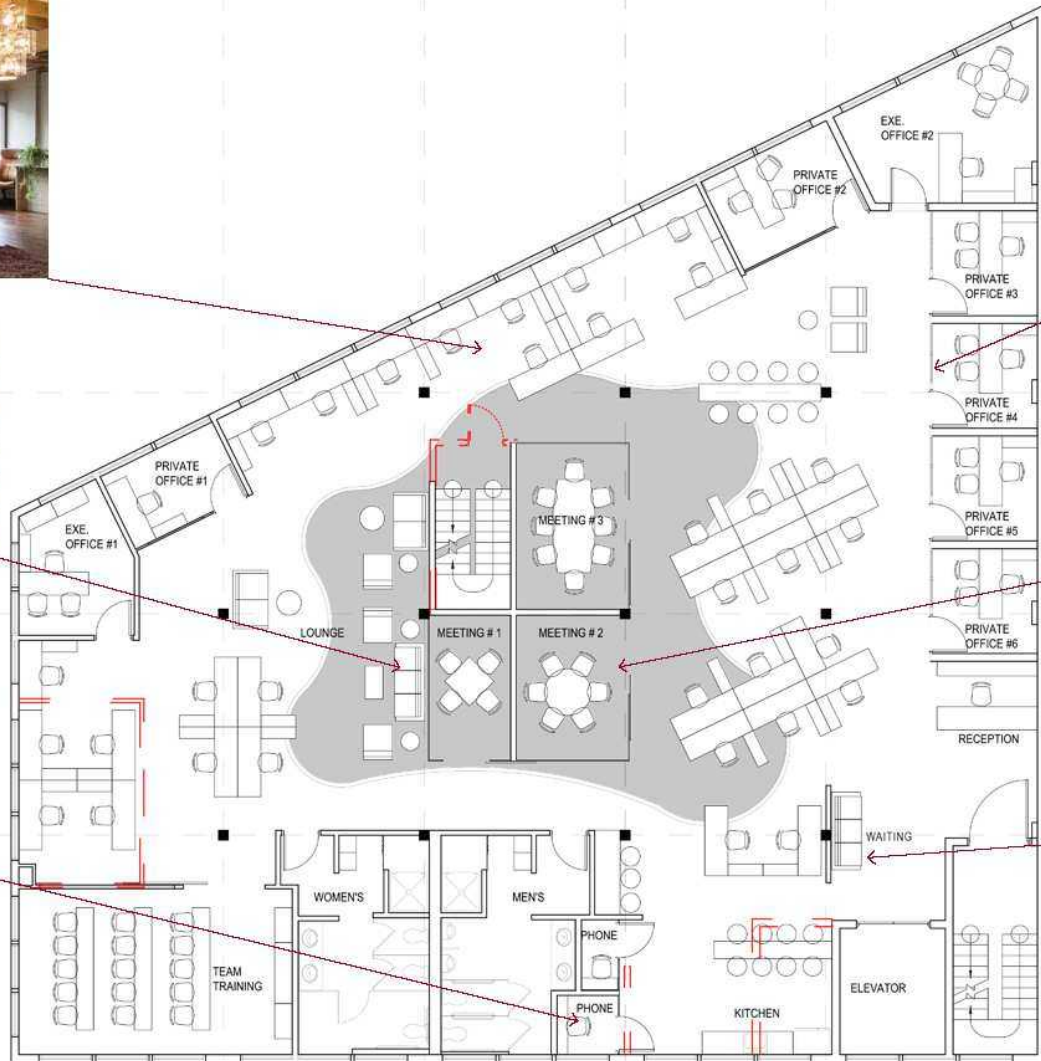
PRIVATE OFFICE



MEETING ROOM



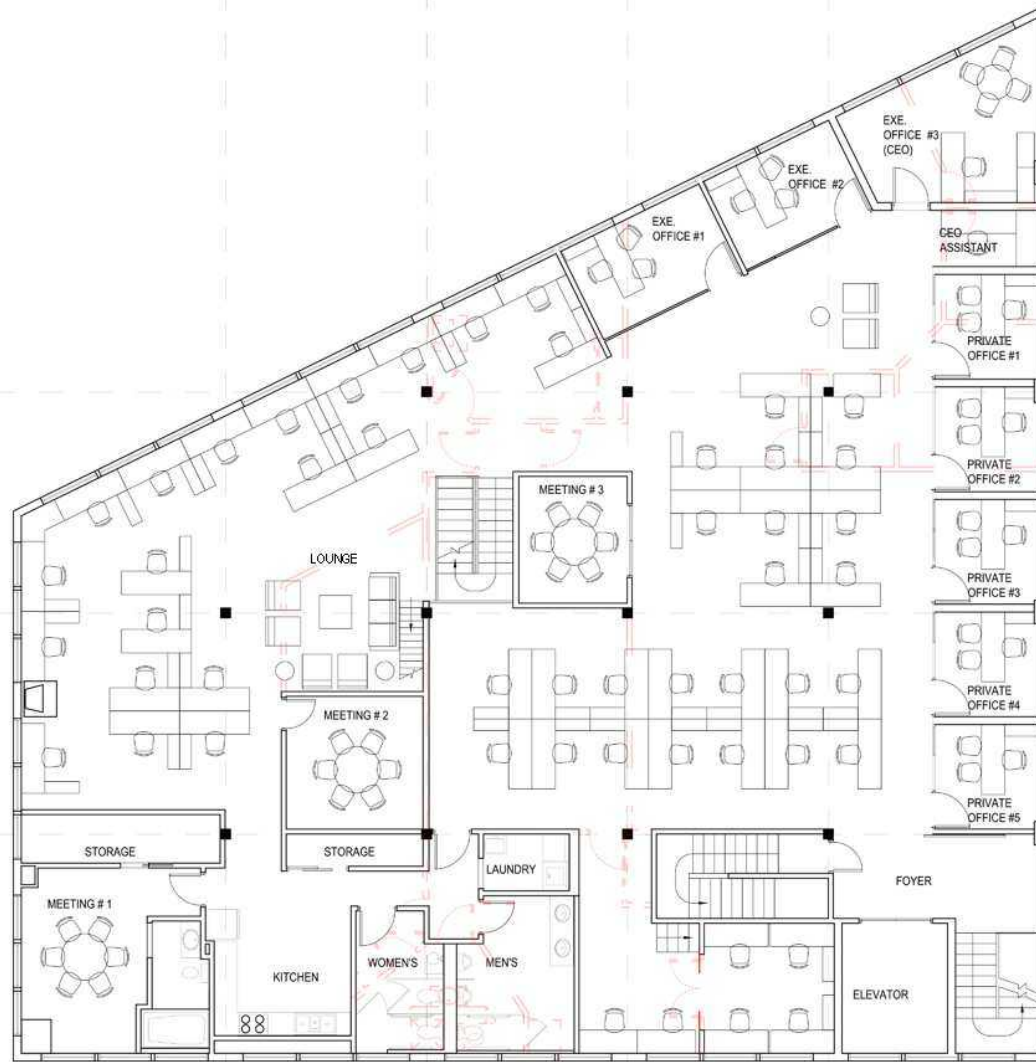
WAITING AREA



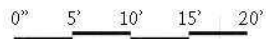
SECOND FLOOR PLAN

- 2 EXECUTIVE OFFICES
- 7 PRIVATE OFFICES
- 33 WORKING STATIONS
- 19 COUNTER SEATING
- 3 MEETING ROOMS
- 2 TELEPHONE BOOTH
- 1 TRAINING ROOM (15 SEATS)

CREATIVE OFFICE FOR LEASE



- 3 EXECUTIVE OFFICES
- 5 PRIVATE OFFICES
- 54 WORKING STATIONS
- 3 MEETING ROOM



THIRD FLOOR PLAN

1001 WESTLAKE AVENUE NORTH, SEATTLE, WA 98109

CREATIVE OFFICE FOR LEASE

