

ON BROADWAY BUILDING

FOR LEASE: 2,373 SF TO 3,308 SF

1142 BROADWAY | TACOMA, WA 98402

PREMIER CBD OFFICE SPACE IN THE HEART OF TACOMA



LEASE INFO

2,373 SF - 3,308 SF
Available

PROPERTY HIGHLIGHTS

Class A
finishes

Desirable
Location

Excellent
Value

Easy access
to I-705, I-5 and
Tacoma Light Rail

**Full 5%
commission**
to outside broker



NICK RATZKE, SIOR
253 779 2414
nratzke@neilwalter.com

MIKE ROY
206.940.7199
mike.roy@kbcadvisors.com



All information references in this document are approximate. The information contained herein is contained from sources deemed reliable. It is provided without representation, warranty, or guarantee, expressed or implied as to accuracy. Prospective buyer or tenant should conduct its own independent investigation relating to the property, government codes and regulations, allowed uses, and all other matters, regardless of whether they are referred to or contained in this document.

ON BROADWAY BUILDING

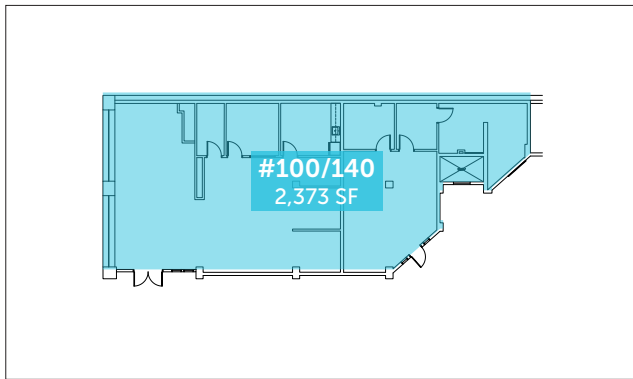
1142 BROADWAY | TACOMA, WA 98402



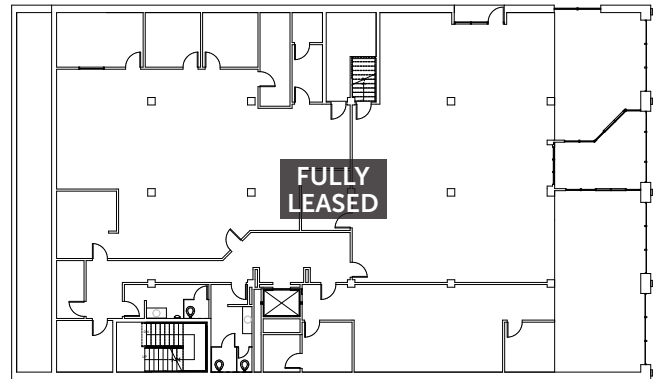
AVAILABLE SUITES

SUITE	SIZE (SF)	RATE/SF/YR
100/140	2,373	\$22.00, FS
300B	2,508	\$22.00, FS
410	3,308	\$22.00, FS

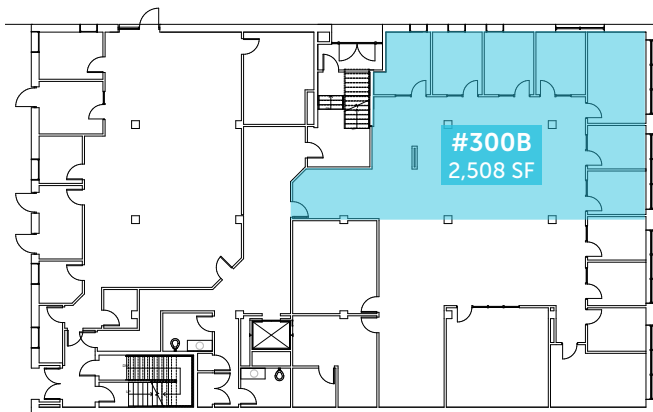
1st Floor Availability



2nd Floor



3rd Floor



4th Floor



NICK RATZKE, SIOR
253.779.1470
nratzke@neilwalter.com

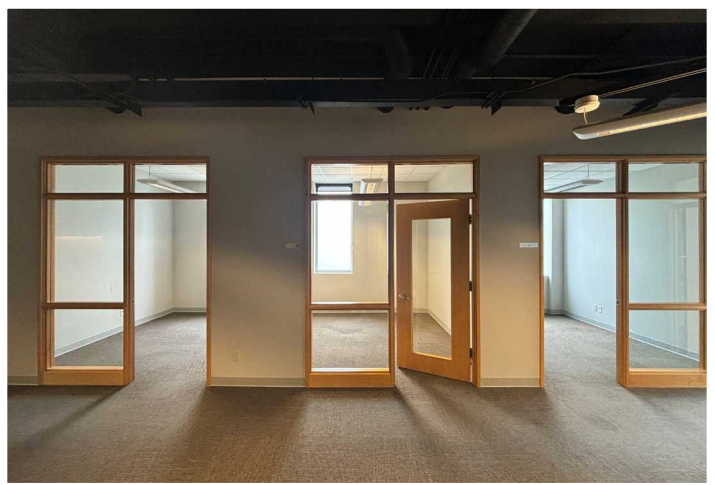
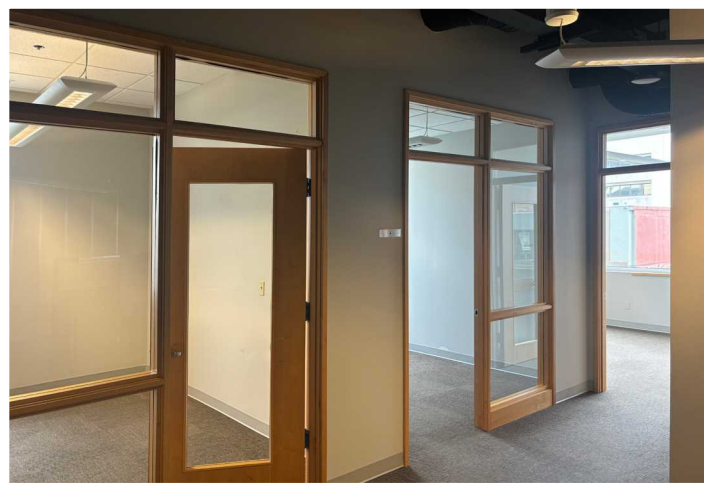
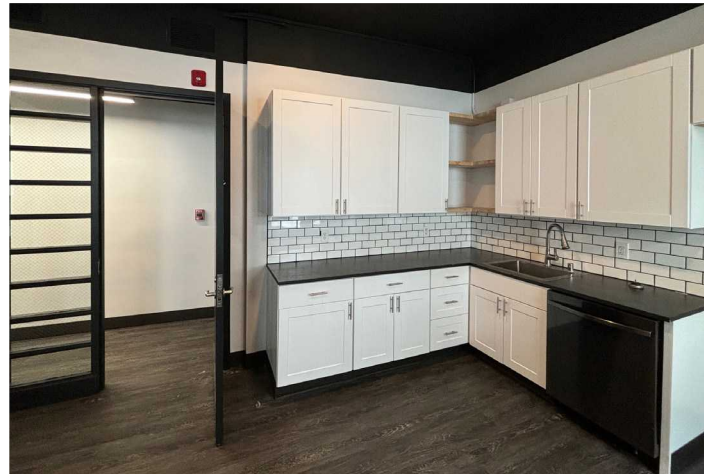
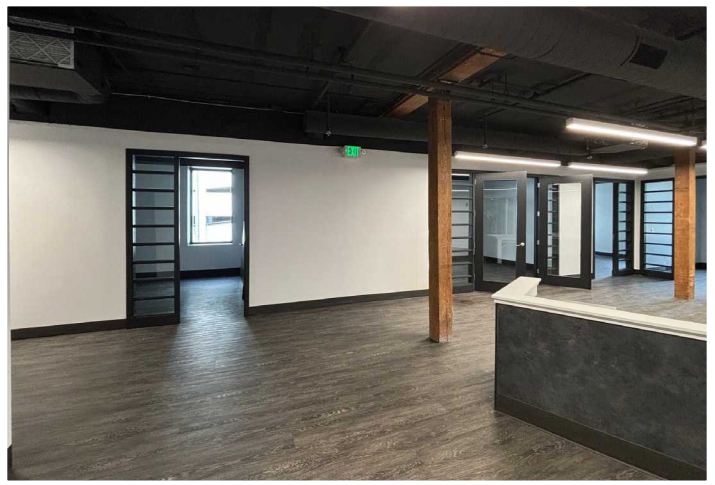
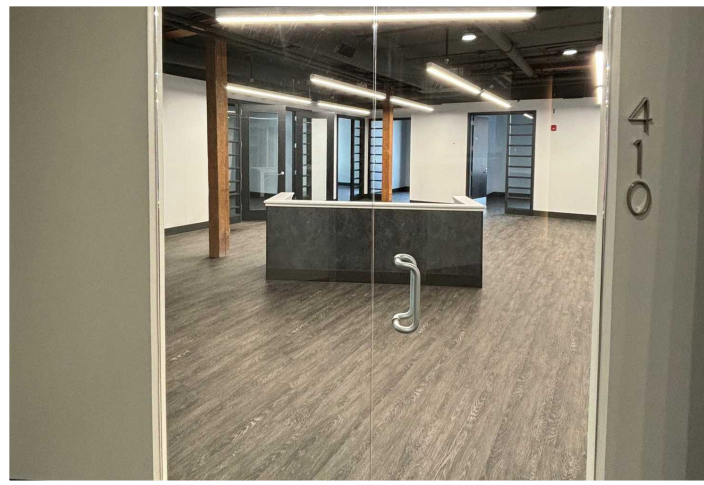
MIKE ROY
206.940.7199
mike.roy@kbcadvisors.com

253.779.8400
www.neilwalter.com

1940 East D St #100
Tacoma, WA 98421

ON BROADWAY BUILDING

1142 BROADWAY | TACOMA, WA 98402



NICK RATZKE, SIOR
253.779.1470
nratzke@neilwalter.com

MIKE ROY
206.940.7199
mike.roy@kbcadvisors.com

253.779.8400
www.neilwalter.com

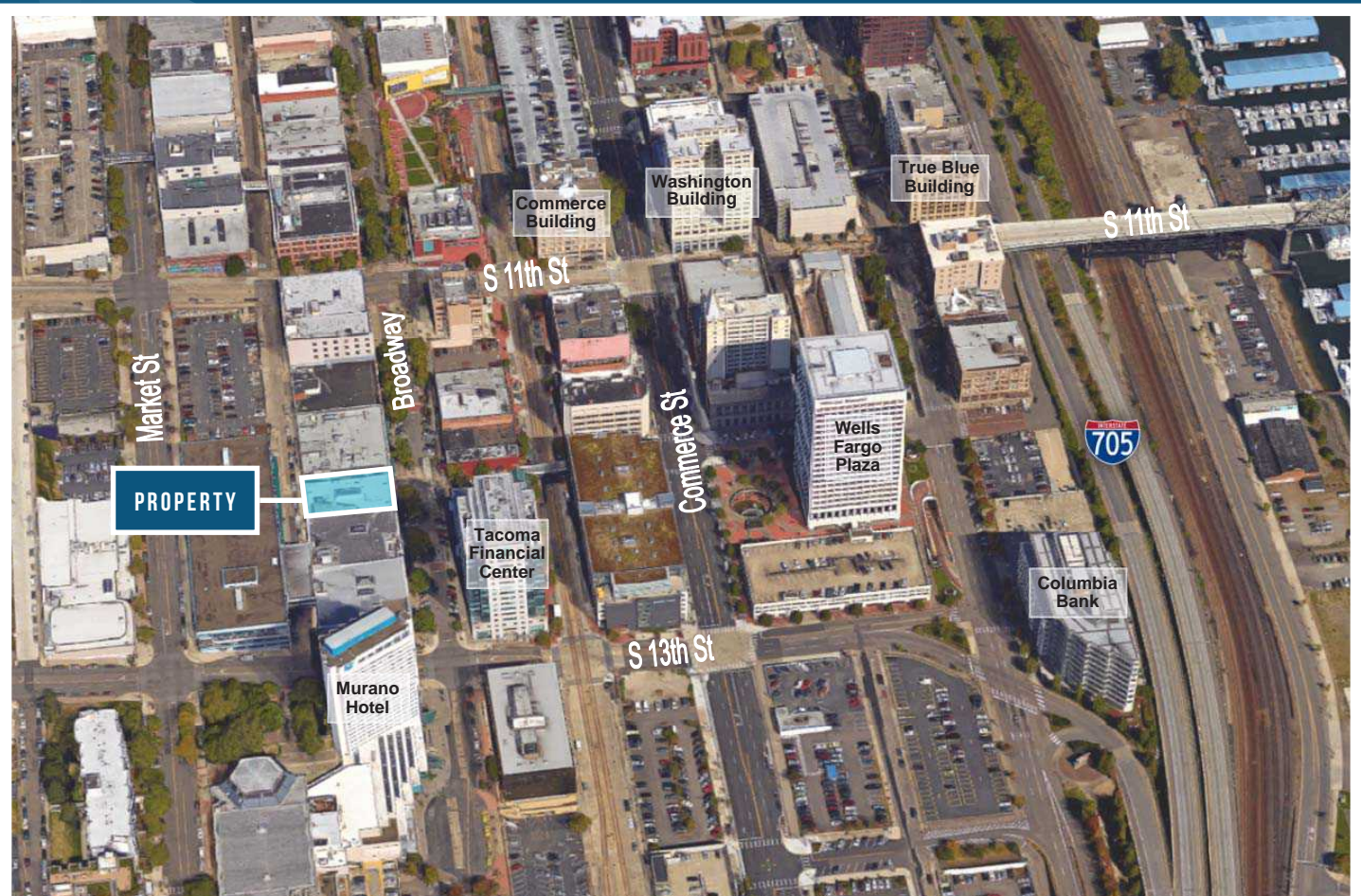
1940 East D St #100
Tacoma, WA 98421

ON BROADWAY BUILDING

1142 BROADWAY | TACOMA, WA 98402



NEIL WALTER
COMPANY



NICK RATZKE, SIOR
253.779.1470
nratzke@neilwalter.com

MIKE ROY
206.940.7199
mike.roy@kbcadvisors.com

253.779.8400
www.neilwalter.com

1940 East D St #100
Tacoma, WA 98421