

FOR LEASE

2001 15th Ave W,
Seattle, WA 98119

COMING SOON!



INTERBAY URBAN SEATTLE

Justin Holmes | Josh Parnell | Don Whittles | Justice Knox

First Western Properties—Tacoma Inc. | 253.472.0404
6402 Tacoma Mall Blvd, Tacoma, WA 98409 | fwp-inc.com

INTERBAY URBAN is a vibrant shopping center located in the heart of Seattle, Washington. Nestled between the lively neighborhoods of Queen Anne and Magnolia, it offers a diverse mix of retail stores, dining options, and essential services. With modern architecture and ample parking, Interbay Urban provides a convenient and enjoyable shopping experience for locals and visitors alike. The center is easily accessible and designed to cater to the dynamic urban lifestyle of Seattle residents.

AVAILABLE

SUITE A2: 3,010 SF CALL FOR DETAILS

SUITE A14: 1,378 SF CALL FOR DETAILS

- **Anchored** by Whole Foods and Petco
- **Conveniently** located minutes from downtown Seattle
- **Great visibility** from 15th Ave West
- **Multiple** access points into the center and signalized intersection
- **Surrounded** by premier neighborhoods; Queen Anne, Magnolia, and Ballard



Population



Average HH Income



Daytime Population

Regis - 2023

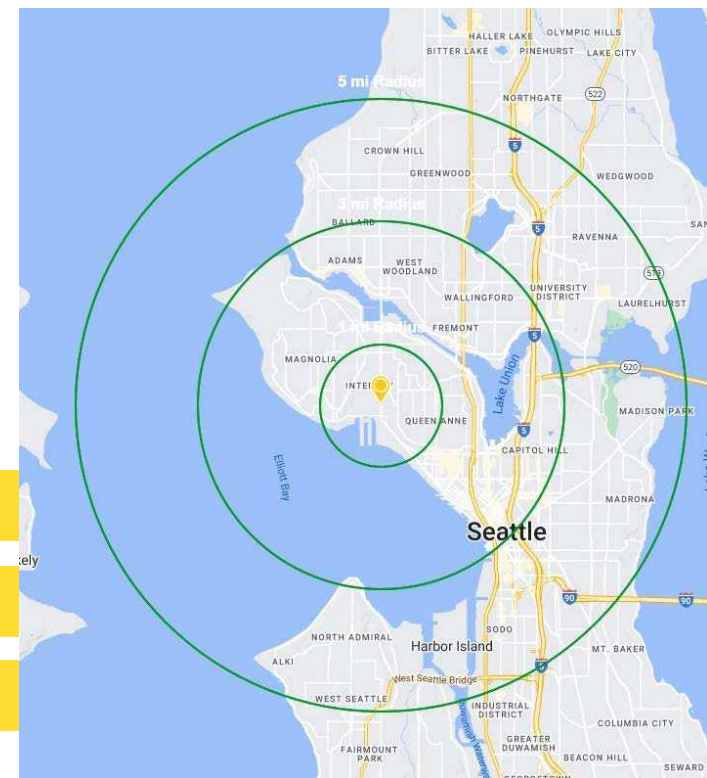
	Population	Average HH Income	Daytime Population
Mile 1	22,546	\$189,329	8,985
Mile 3	209,886	\$156,272	242,170
Mile 5	471,452	\$154,010	408,238

TENANTS



COMING SOON!

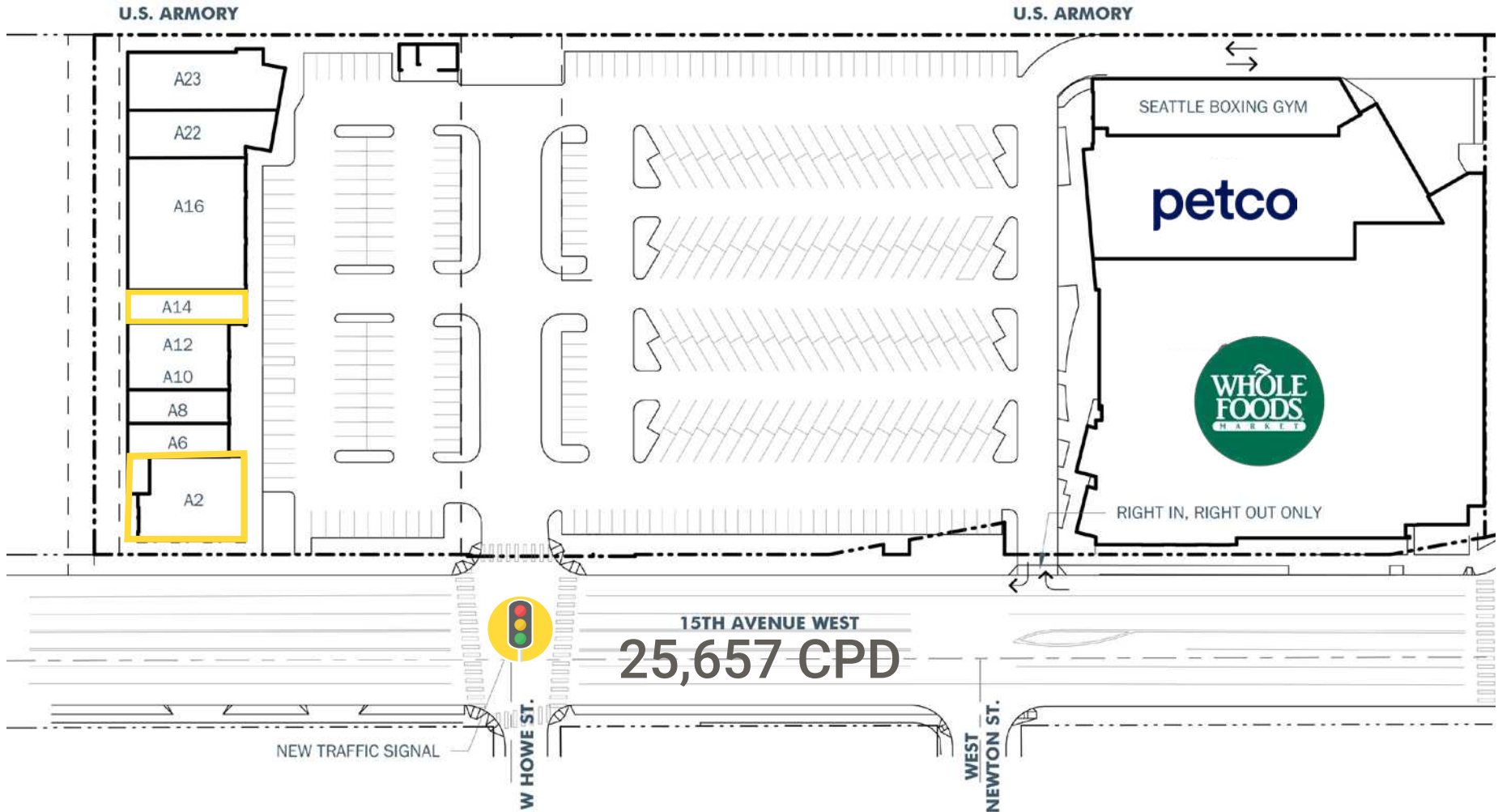
COMING SOON!



TOTAL CENTER GLA : 80,560 SF

TOTAL PARKING PROVIDED: 347 STALLS (4.31 STALLS / 1000 SF)

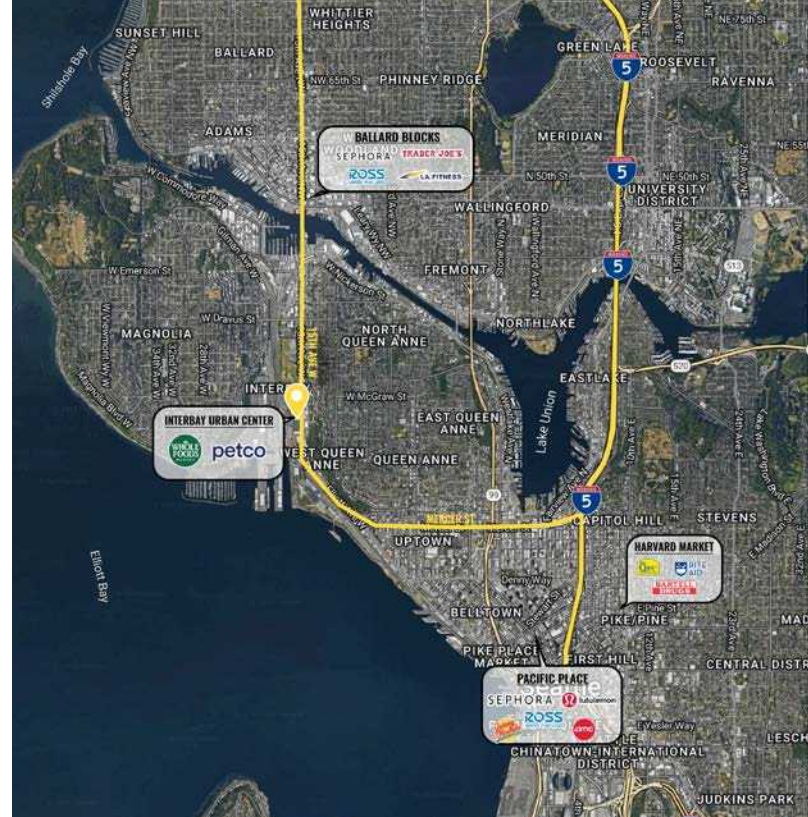
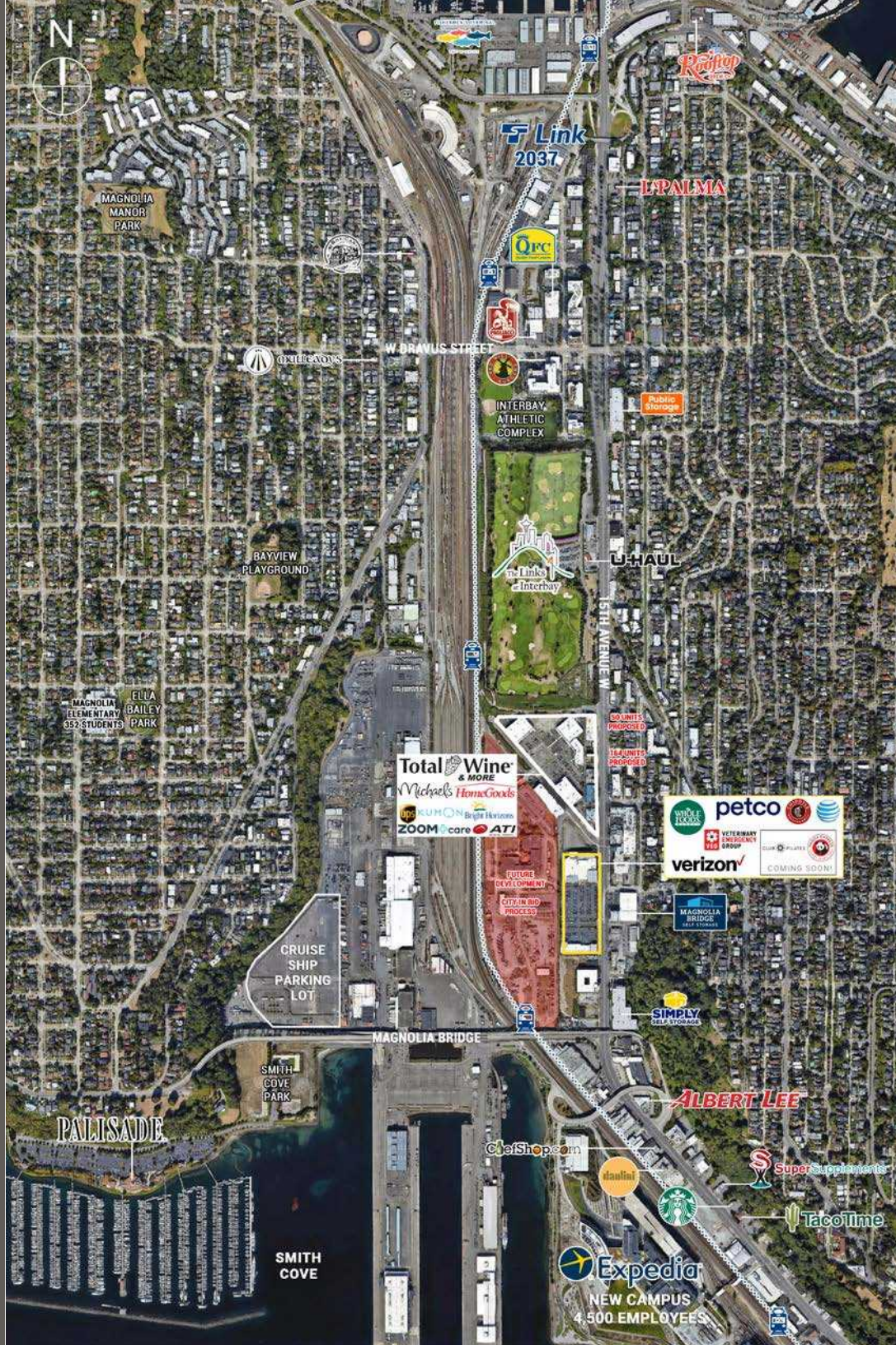
SITE PLAN



Suite	SF	Tenant
Suite A	40,928	Whole Foods Market
Suite B	14,334	Petco
Suite C	5,055	Platt Sports & Training
Suite A2	3,010	AVAILABLE
Suite A6	1,208	Verizon Wireless
Suite A8	1,208	AT&T

Suite	SF	Tenant
Suite A10-A12	2,408	Club Pilates [Coming Soon!]
Suite A14	1,378	AVAILABLE
A16-A20	5,600	The Veterinary Emergency Group
A22	2,628	Chipotle
A23	2,814	Panda Express [Coming Soon!]

AERIAL MAP





SUITE A14:
1,378 SF

COMING SOON!

COMING SOON!

PHOTO

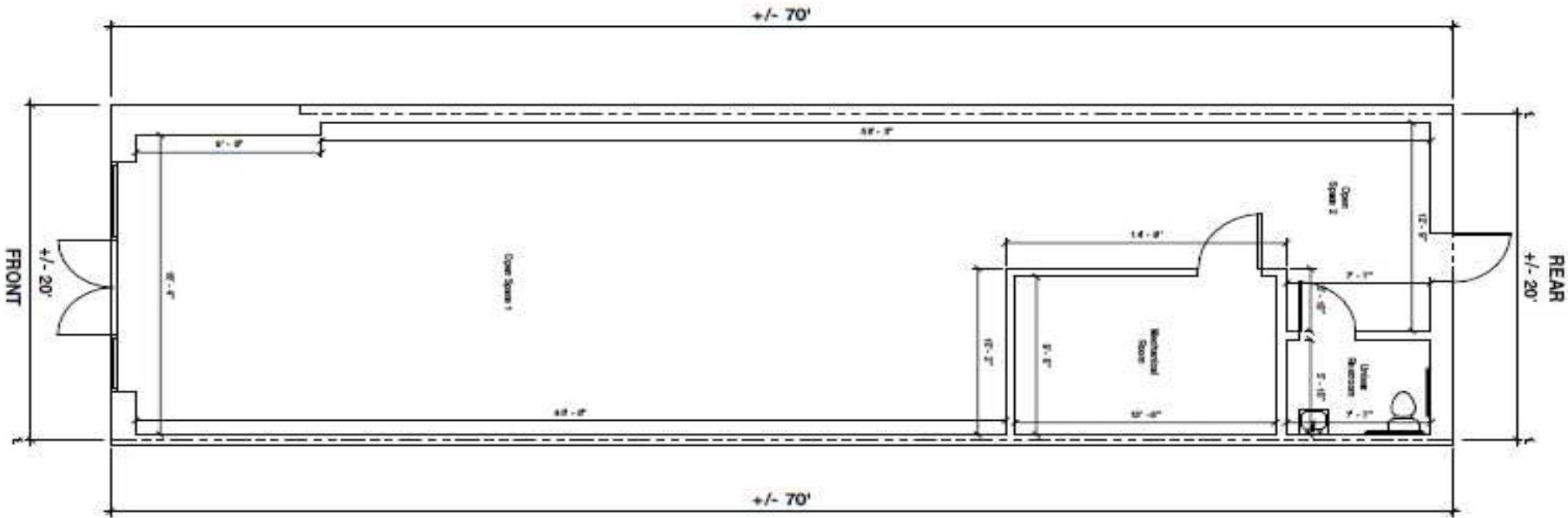


SUITE A2:
3,010 SF



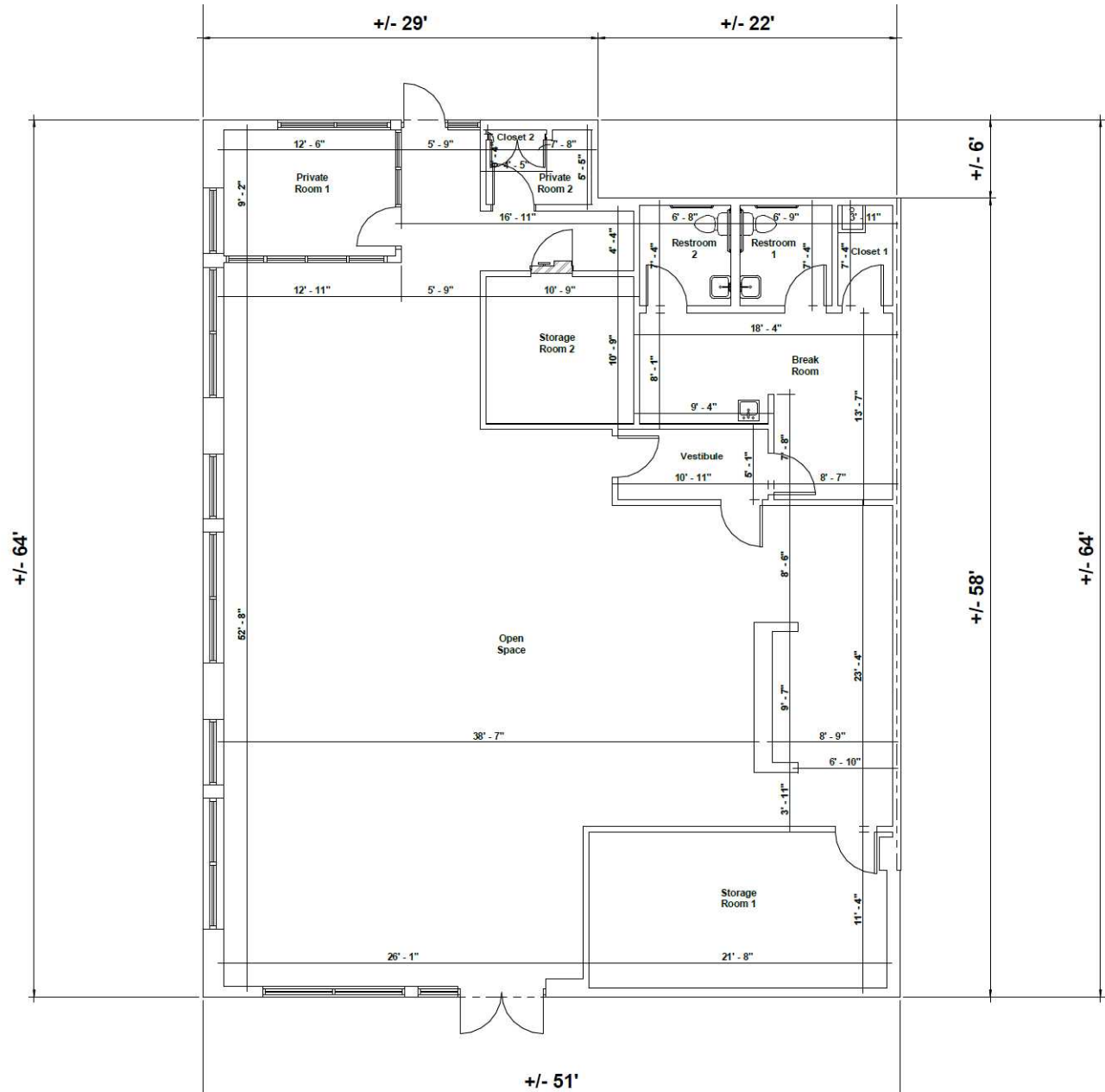
AVAILABLE: SUITE A14 - 1,378 SF

FLOOR PLANS



AVAILABLE: SUITE A2 - 3,010 SF

FLOOR PLANS



RELATIONSHIP FOCUSED. RESULTS DRIVEN.

JUSTIN HOLMES

📞 253.447.2282

✉️ justin@firstwesternproperties.com

JOSH PARNELL

📞 253.284.3630

✉️ josh@firstwesternproperties.com

DON WHITTLES

📞 253.471.5509

✉️ dwhittles@firstwesternproperties.com

JUSTICE KNOX

📞 253.471.5501

✉️ jknox@firstwesternproperties.com

