



# Center Plaza DuPont

**7,200 SF Space  
for Sublease**

*Building 1, Suite 140-148*

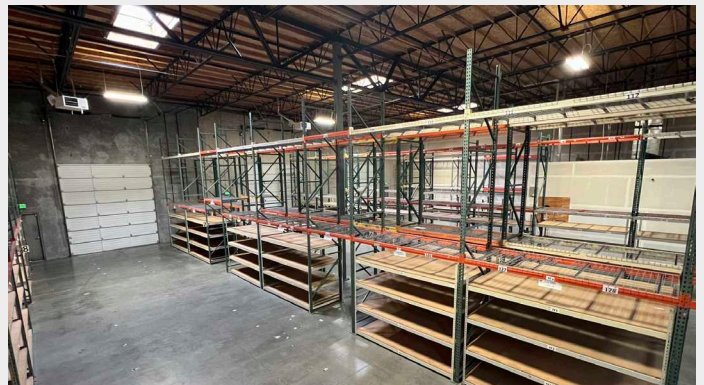
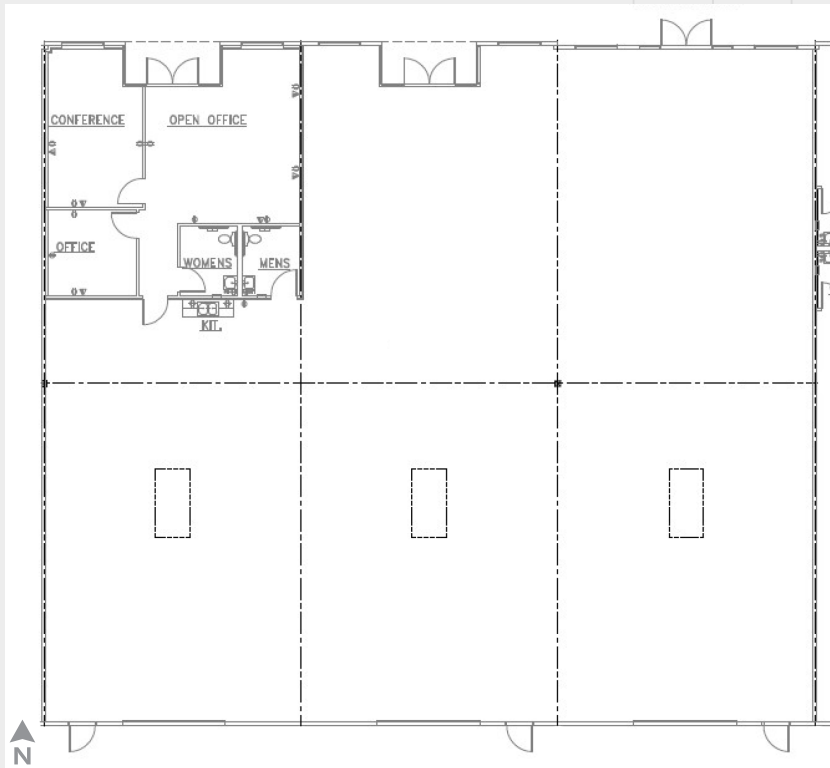
## Property Information

### *Details*

- + 7,200 SF shell
- + 900 SF office
- + 3 drive-in doors (12' wide x 14' tall)
- + 21' warehouse clear height
- + Racking available
- + ±200A of 208/120V 3-phase power
- + Quality finishes in class A building
- + Quick access to I-5 and abundant amenities nearby
- + Sublease term through August 31, 2026
- + \$1.10 blended, NNN (±\$0.325)
- + Available now

# Site Plan & Photos

2750 WILLIAMSON PLACE  
DUPONT / WA



**Monte Decker**  
Senior Vice President  
+1 253 596 0041  
monte.decker@cbre.com

**Chris Cowles**  
First Vice President  
+1 253 596 0048  
chris.cowles@cbre.com

**CBRE, Inc.**  
710 Market Street  
Tacoma, WA 98402



© 2024 CBRE, Inc. All rights reserved. This information has been obtained from sources believed reliable but has not been verified for accuracy or completeness. CBRE, Inc. makes no guarantee, representation or warranty and accepts no responsibility or liability as to the accuracy, completeness, or reliability of the information contained herein. You should conduct a careful, independent investigation of the property and verify all information. Any reliance on this information is solely at your own risk. CBRE and the CBRE logo are service marks of CBRE, Inc. All other marks displayed on this document are the property of their respective owners, and the use of such marks does not imply any affiliation with or endorsement of CBRE. Photos herein are the property of their respective owners. Use of these images without the express written consent of the owner is prohibited. SD 10.24.24