

FOR LEASE

COMMENCEMENT PLAZA

820 A ST, TACOMA, WA



KIDDER.COM

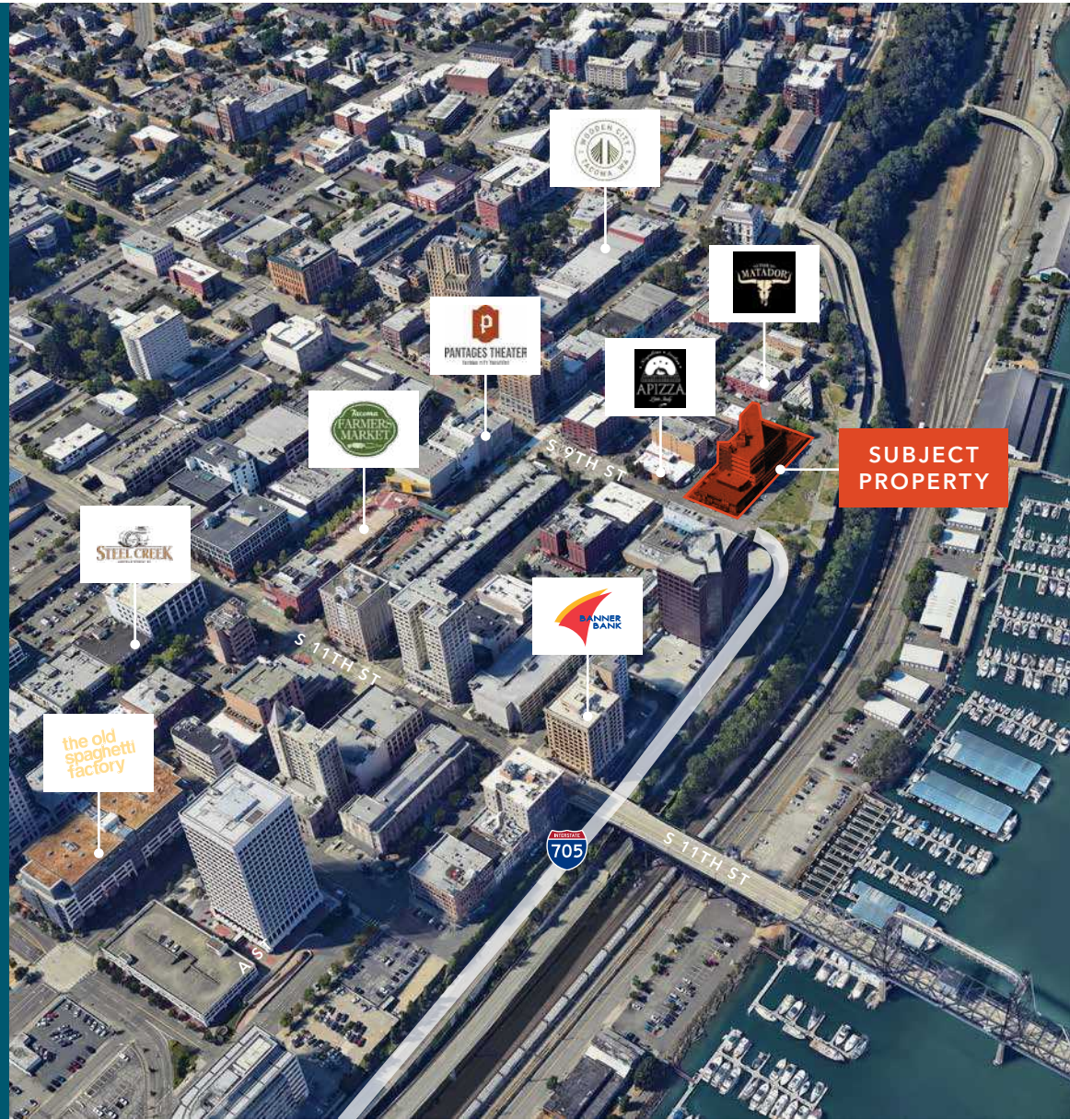
km Kidder Mathews

Recently Renovated with Water Views

PROPERTY OVERVIEW

RATE	See floor plans
LOWER LEVEL	8,219 SF
SUITE 101	7,643 SF
SUITE 220	3,737 SF
SUITE 101 & 220	Contiguous standalone opportunity
SUITE 300	2,000 SF - 7,664 SF
AMENITIES	On site security, structured parking and unobstructed views of Commencement Bay
LOCATION	9th and A St with direct access to 705 and I-5
SURROUNDING AREAS	Metro Bus Line and Link Light Rail 1 block away. Walking distance to renowned bars and restaurants
RENOVATIONS	Exterior renovations including a full building paint job. Interior including all new common areas and lobby with high end Class A finishes

STANDALONE **TURNKEY**
 OPPORTUNITY OFFICE



COMMENCEMENT PLAZA

PROPERTY OVERVIEW

Turn-Key Class A office, ready for immediate occupancy

Secure Parking

Unobstructed views of Commencement Bay

Direct access to freeways

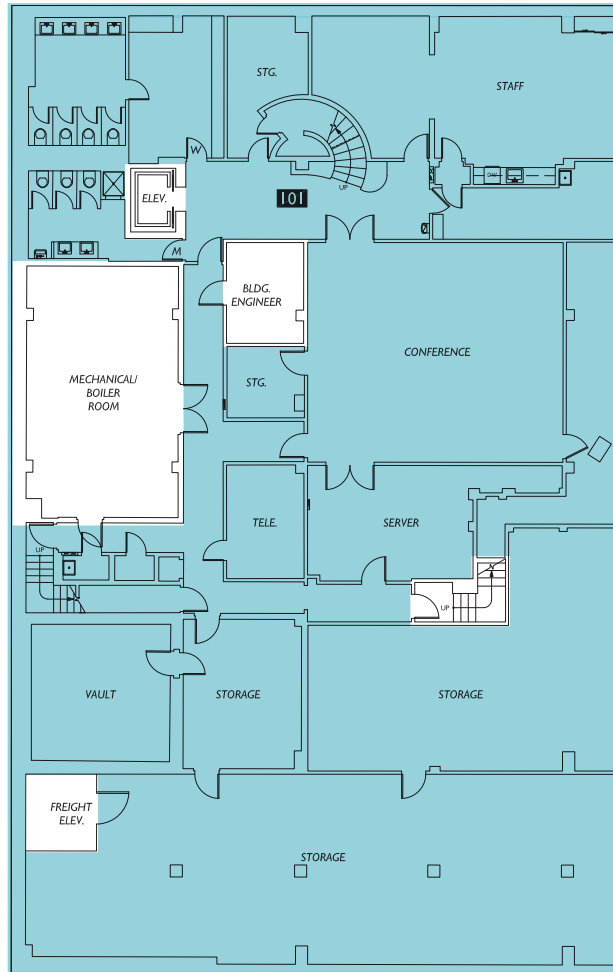
Direct access standalone retail identity



COMMENCEMENT PLAZA



LOWER LEVEL - STANDALONE RETAIL/OFFICE



8,219 SF

AVAILABLE

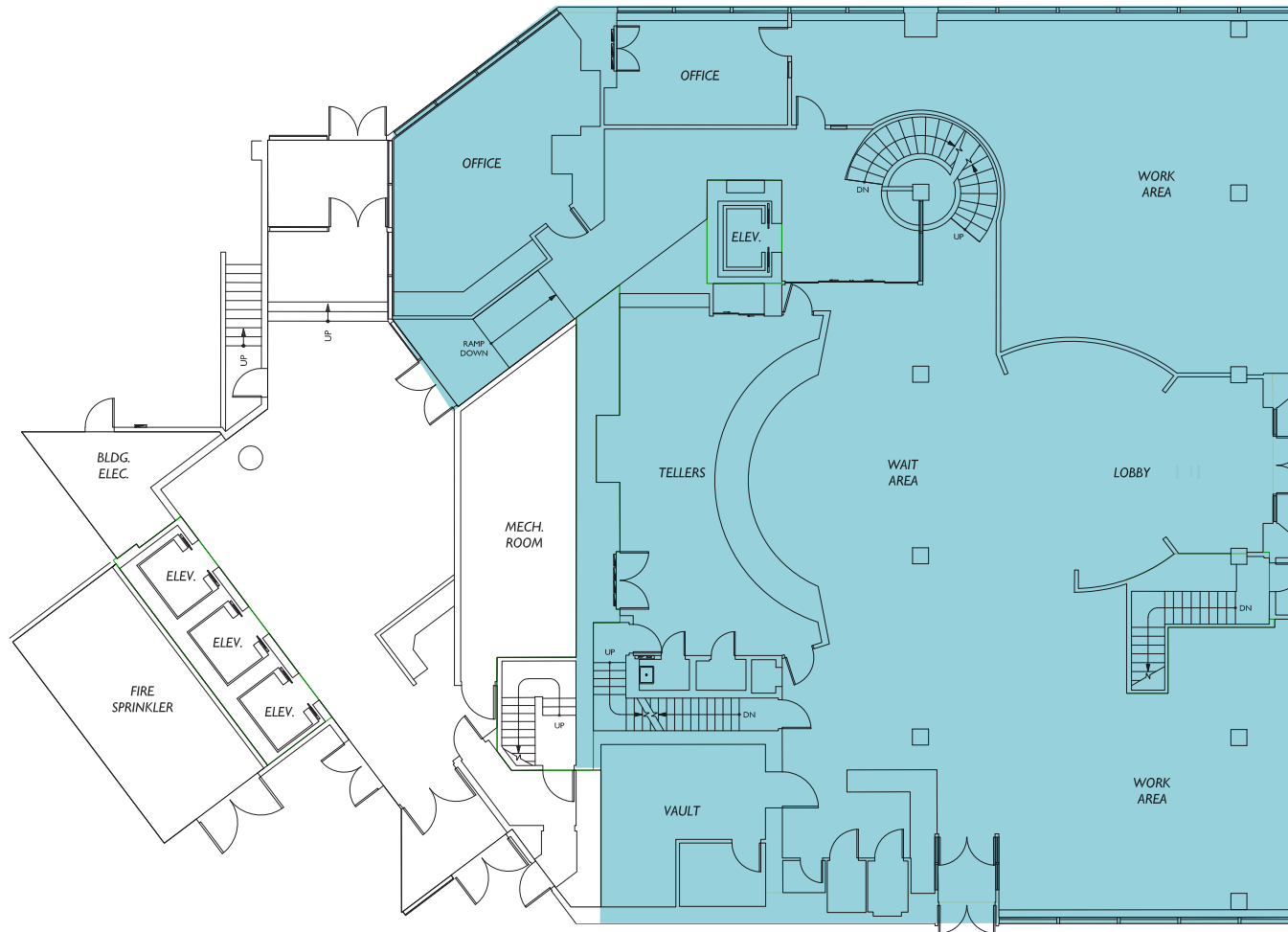
19,599 SF

LOWER LEVEL + SUITE 101 + SUITE 220

\$18.00

PSF, FULL SERVICE

SUITE 101 - STANDALONE RETAIL/OFFICE



7,643 SF

AVAILABLE

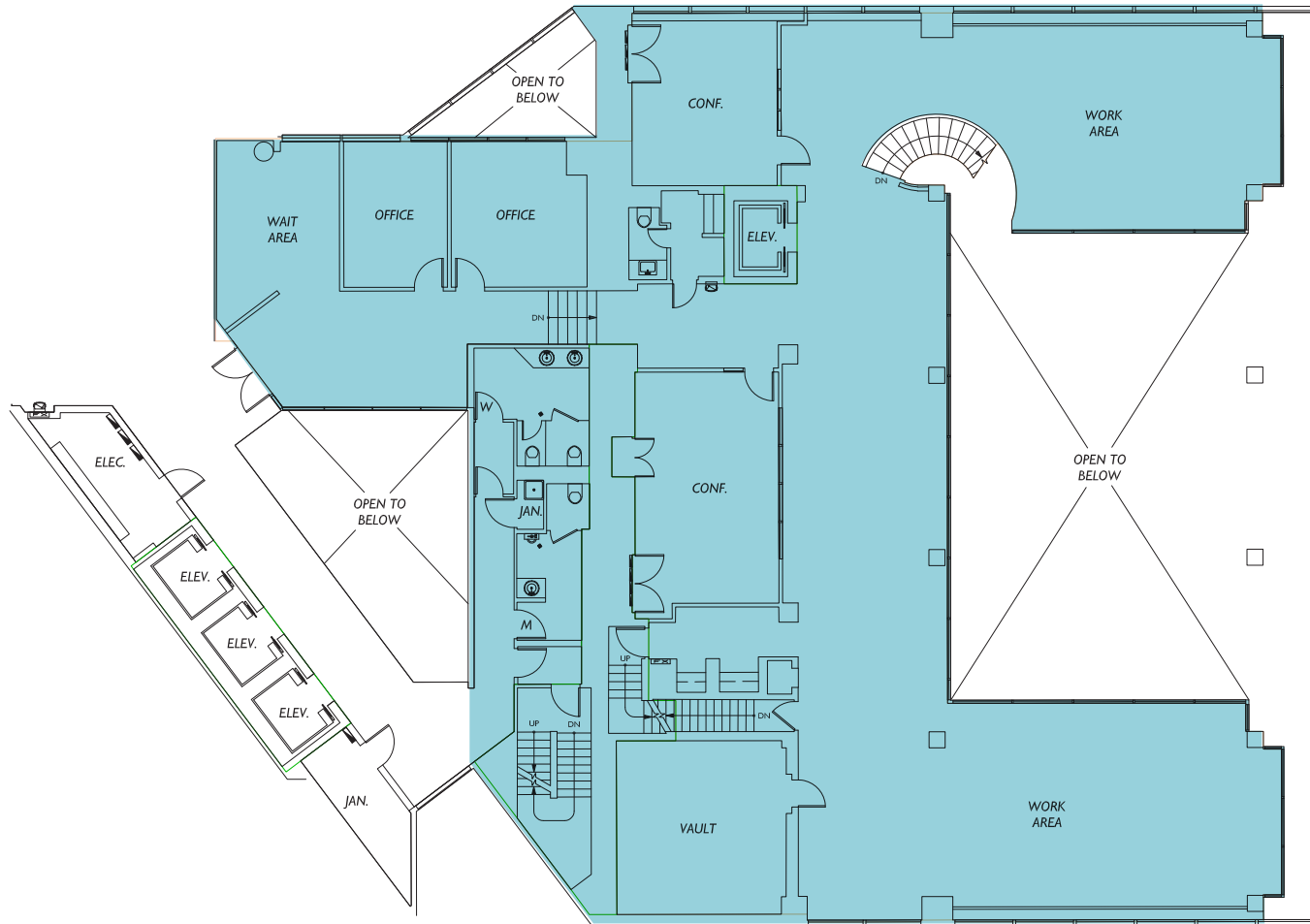
RETAIL EXPOSURE

DIRECT ACCESS

\$28.00

PSF, FULL SERVICE

SUITE 220 - STANDALONE RETAIL/OFFICE



3,737 SF

AVAILABLE

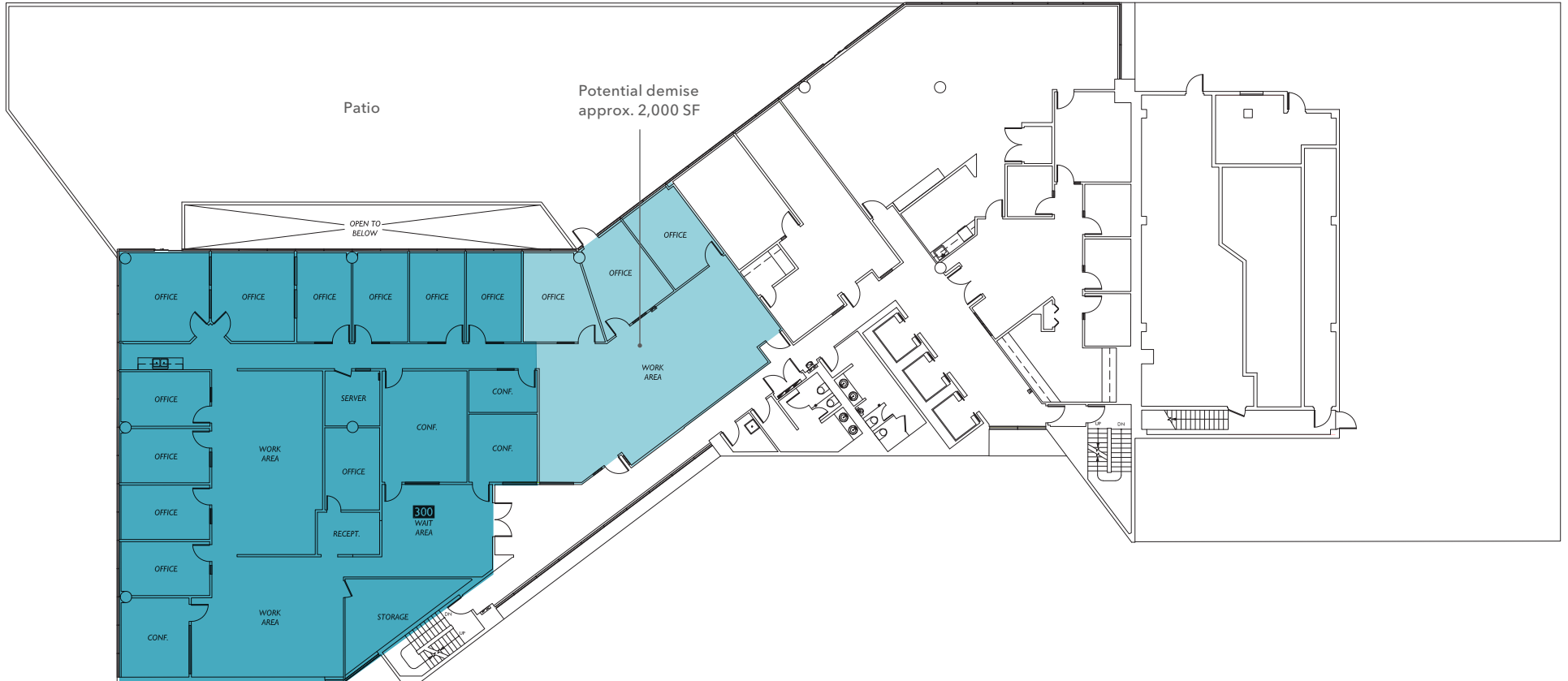
11,380 SF

COMBINE SUITE 101 & 220

\$28.00

PSF, FULL SERVICE

SUITE 300



2,000 - 7,664 SF

AVAILABLE

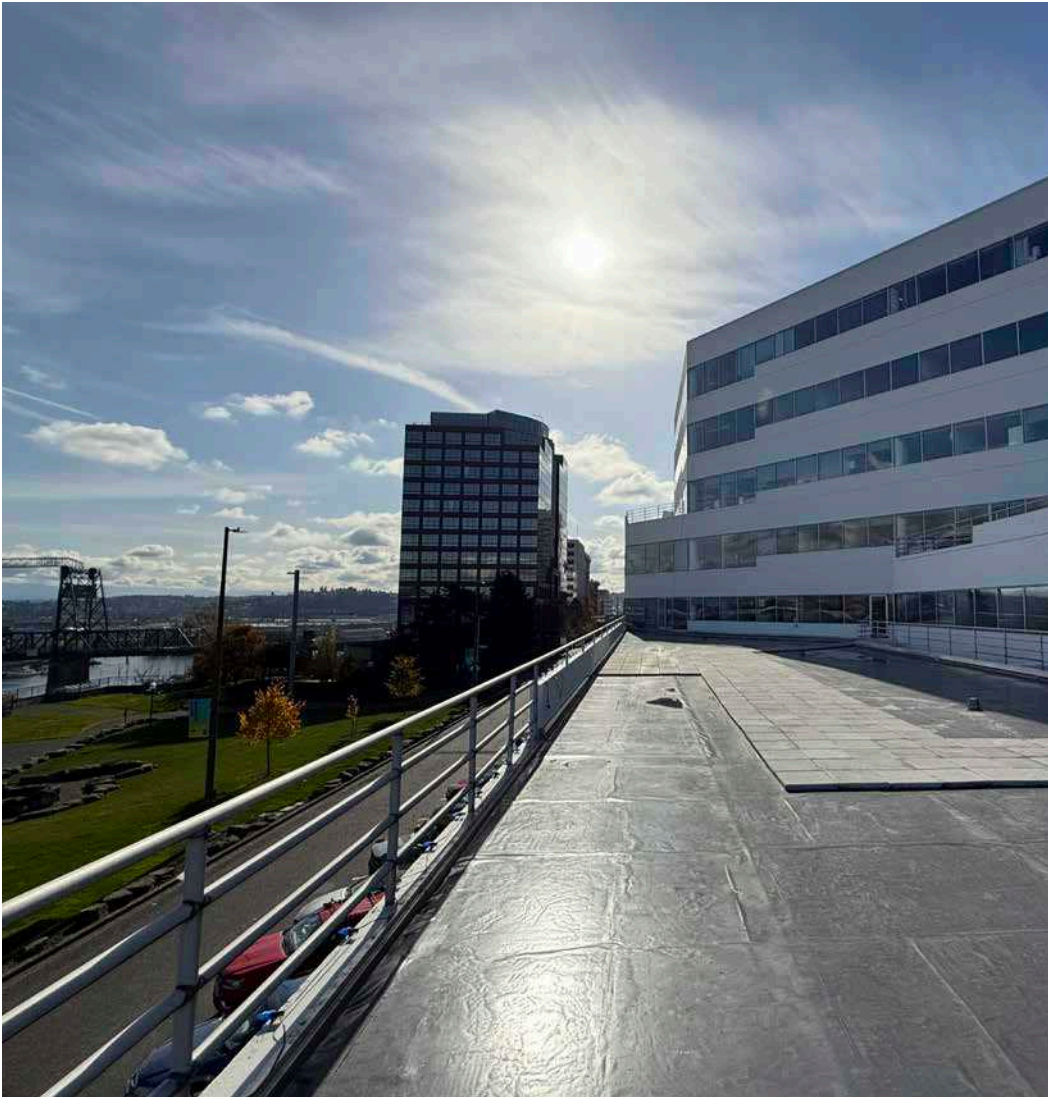
PATIO

ACCESS

\$29.00

PSF, FULL SERVICE

SUITE 300 - PATIO SPACE





Exclusively listed by

WILL FRAME

Executive Vice President
253.722.1412
will.frame@kidder.com

DREW FRAME

Senior Vice President
253.722.1453
drew.frame@kidder.com

BEN NORBE

Executive Vice President
253.722.1410
ben.norbe@kidder.com

KIDDER.COM