

RETAIL FOR LEASE

PIKE PINE DOWNTOWN RETAIL CORE

WESTLAKE PLACE

1520 Fourth Avenue, Seattle, WA 98101



For more information please contact:

LAURA MILLER

laura@gibraltarusa.com

206.351.3573

SAM BENTON

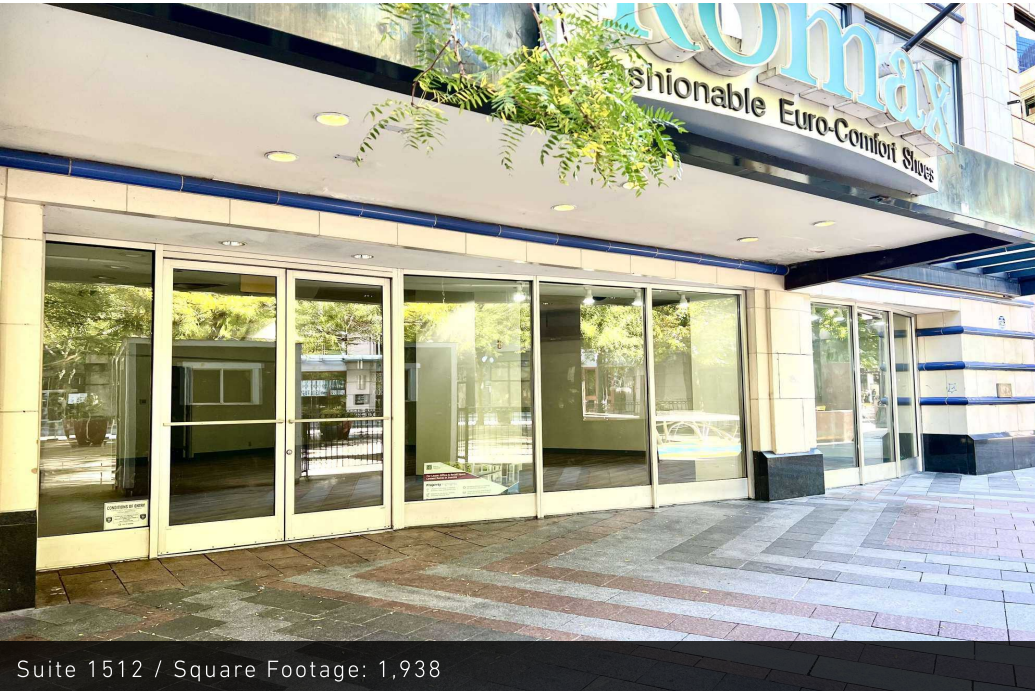
samb@gibraltarusa.com

312.550.8825



1520 FOURTH AVENUE, SEATTLE, WA 98101

WESTLAKE PLACE



Suite 1512 / Square Footage: 1,938



Suite 1518 / Square Footage: 1,161

PROPERTY HIGHLIGHTS

- Unique opportunity to lease prime retail space in the center of Downtown Seattle's Pike Pine retail, commercial, and tourism core
- High-visibility location on the street-level of Westlake Place, a 6-story office and retail mixed-use property directly overlooking Westlake Park, a vibrant hub for families, seniors, food trucks, art, public gaming, community and holiday events
- Westlake Park features a daily rotation of food trucks, attracting daytime visitors steps from the retail storefronts
- A few short blocks to world famous Pike Place Market, which welcomes over 10 million visitors annually
- Surrounding retailers include UNIQLO, Sephora, Zara, Arc'teryx, Dr. Marten's, Westlake Center Mall, Nordstrom, AllSaints, Yard House and more!



100

TRANSIT SCORE



99

WALK SCORE



83

BIKE SCORE



92,293

TOTAL POPULATION



57,996

TOTAL HOUSEHOLDS



\$105,855

MEDIAN INCOME

* Demographic data derived from 2024 1 mile radius

1520 FOURTH AVENUE, SEATTLE, WA 98101

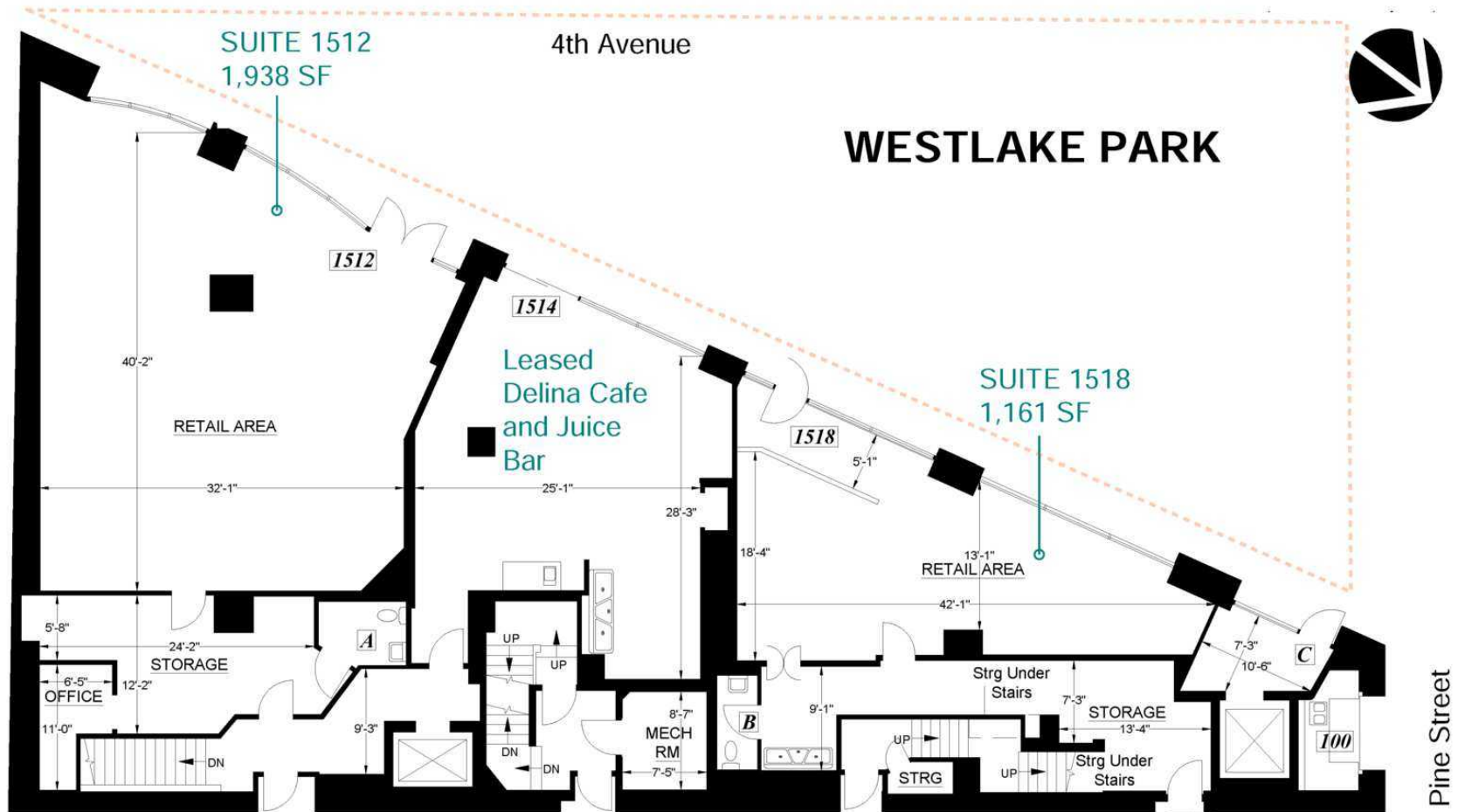
WESTLAKE PLACE



AVAILABLE SPACES

SUITE	SIZE (RSF)	NNN	LEASE RATE	DESCRIPTION
Suite 1512	1,938 SF	\$11.00	\$20.00 SF/yr	Ideal for market, retail, skincare.
Suite 1518	1,161 SF	\$11.00	\$20.00 SF/yr	Excellent window line, ideal for retail, cafe, ice cream.

WESTLAKE PLACE



1520 FOURTH AVENUE, SEATTLE, WA 98101

WESTLAKE PLACE

