

# FOR LEASE

3001 Mile Hill Drive  
Port Orchard, WA 98366



## MILE HILL RETAIL

Lisa Tallman | Jamie Firth

First Western Properties—Tacoma Inc. | 253.472.0404  
6402 Tacoma Mall Blvd, Tacoma, WA 98409 | fwp-inc.com



## AVAILABLE

2,890 SF    \$22.00 PSF    PLUS \$10.00 EST NNN

1,400 SF    \$22.00 PSF    PLUS \$10.00 EST NNN




- Endcap with drive-thru
- Adjacent to Albertsons anchored shopping center
- Located on Port Orchard's busy Mile Hill Drive with over 17,000 CPD

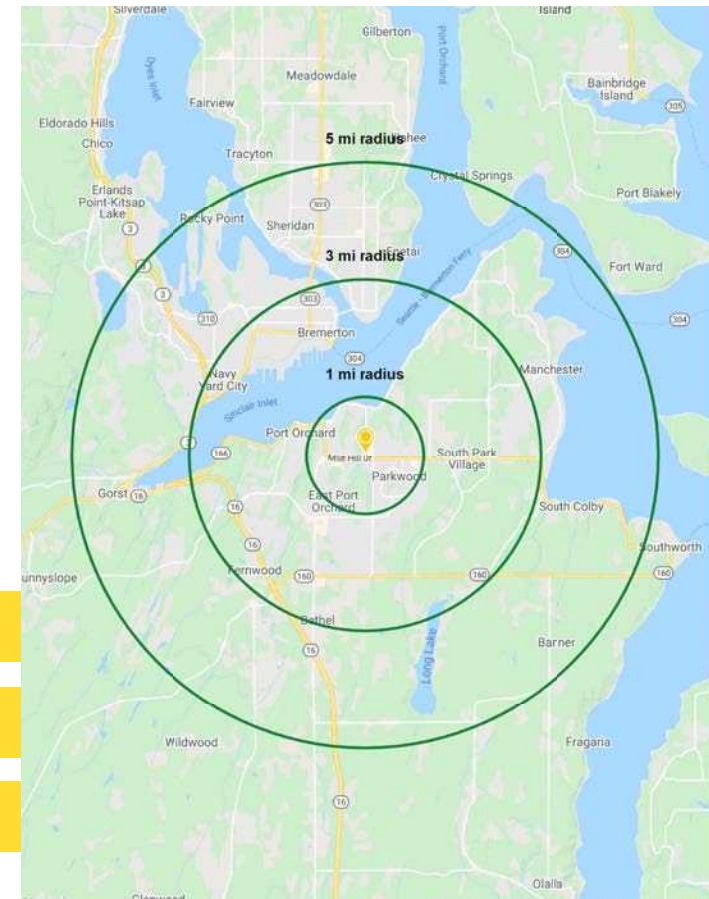
## TENANTS



## SUMMARY

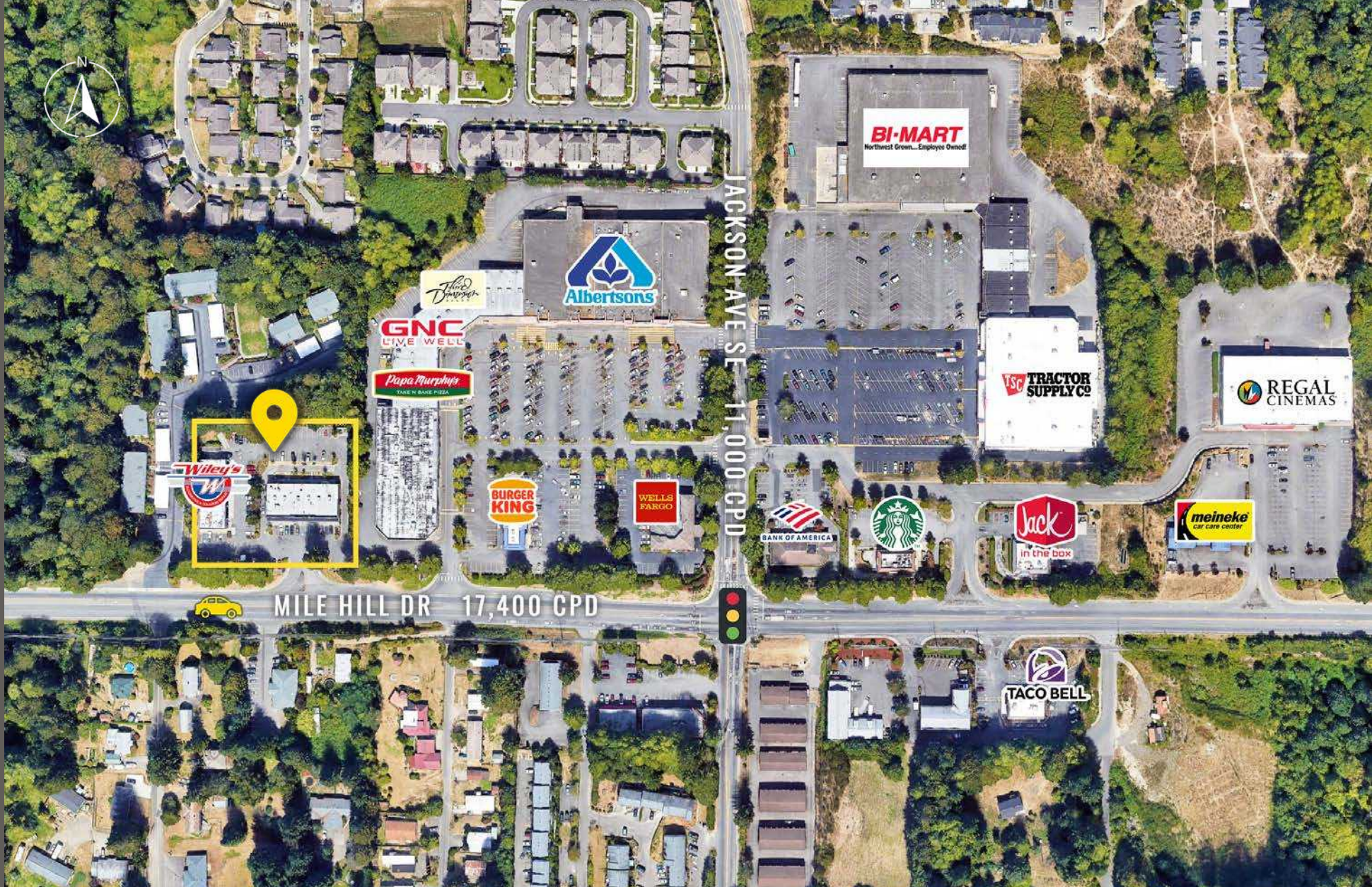


Regis - 2022	 Population	 Average HH Income	 Daytime Population
Mile 1	7,761	\$82,667	5,695
Mile 3	51,569	\$83,818	33,316
Mile 5	102,837	\$89,094	67,730





LOCATION DETAILS



Located moments from HWY 16



Located in the Port Orchard Retail Core



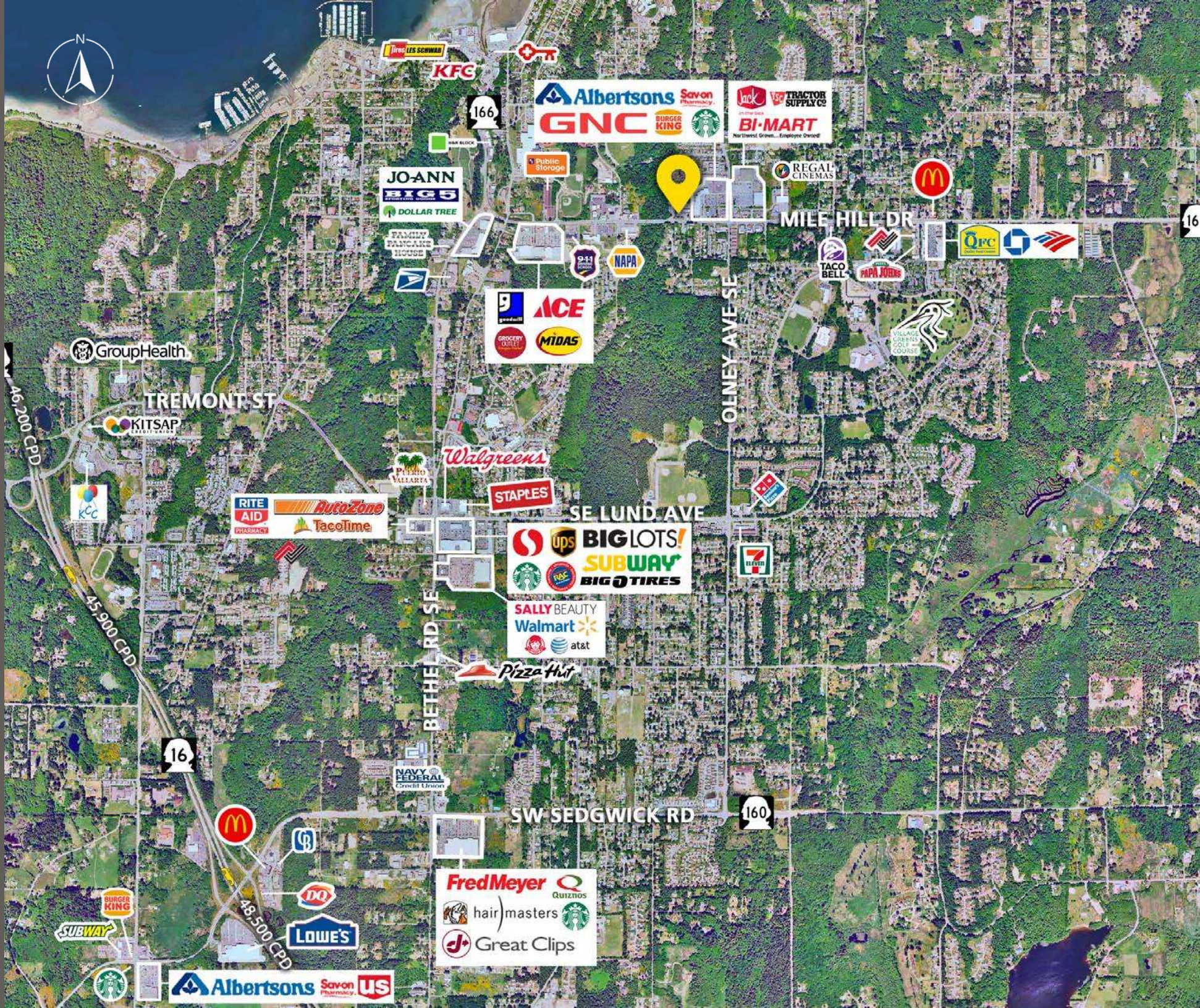
17,400 CPD Mile Hill Drive



11,000 CPD Jackson Ave SE

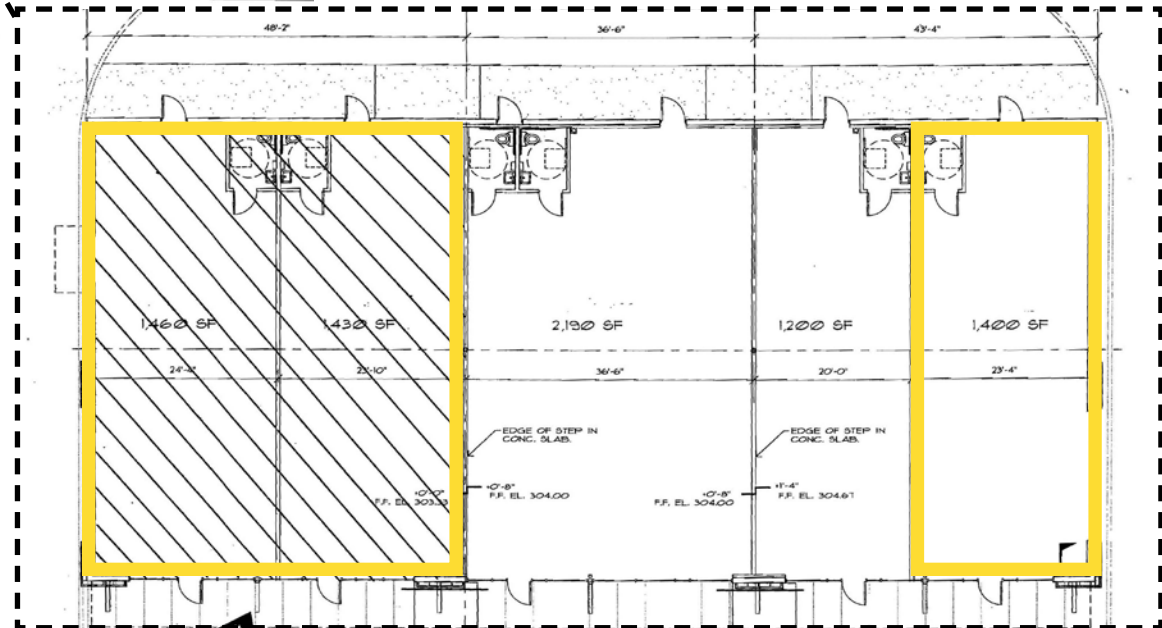
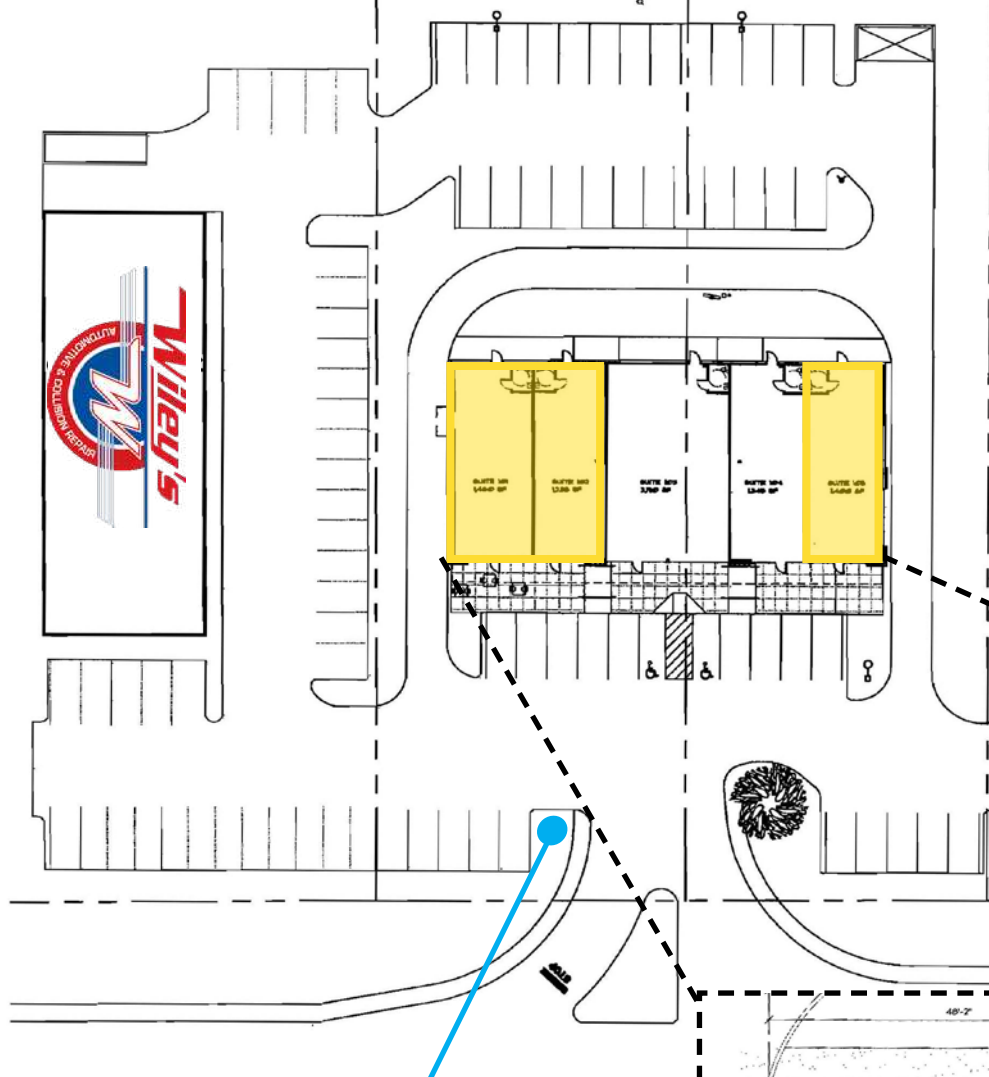


LOCATION AERIAL





# SITE PLAN






TACOMA | KIRKLAND | PORTLAND | SEATTLE

RELATIONSHIP FOCUSED.  
RESULTS DRIVEN.




LISA TALLMAN

 253.471.5504

 [lisa@firstwesternproperties.com](mailto:lisa@firstwesternproperties.com)

JAMIE FIRTH

 253.284.3649

 [jamie@firstwesternproperties.com](mailto:jamie@firstwesternproperties.com)



First Western Properties—Tacoma Inc. | 253.472.0404  
6402 Tacoma Mall Blvd, Tacoma, WA 98409 | [fwp-inc.com](http://fwp-inc.com)

© First Western Properties, Inc. DISCLAIMER: The above information has been secured from sources believed to be reliable, however, no representations are made to its accuracy. Prospective tenants or buyers should consult their professional advisors and conduct their own independent investigation. Properties are subject to change in price and/or availability without notice.