



Full Building Sublease

101,559 SF Available

1200 Industry St. Everett, WA 98203

 **JLL** SEE A BRIGHTER WAY

Property Features



Sublease Term
Master lease through
2/28/2026



Sublease Rental Rate
**Please contact brokers*



Clear Height 24'



Zoning - LI2



Power / Electrical
3,000 amps 480v 3p



Loading Doors
31 total (5-grade level, 26
dock high)



Parking
1.47/1,000 (149 stalls)



1200 Industry St.

Site Details

101,559 SF

Total Footprint

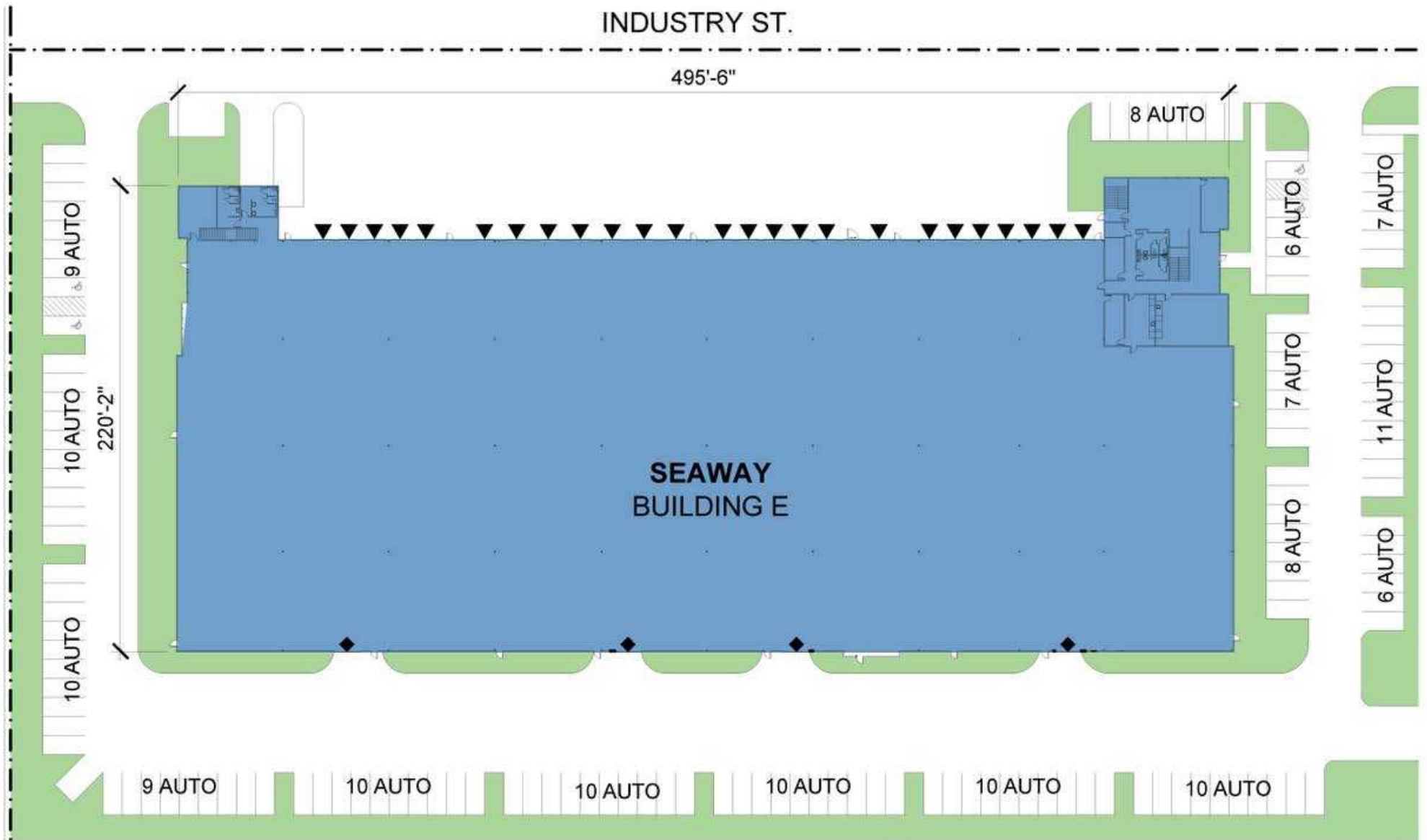
94,343 SF

Warehouse

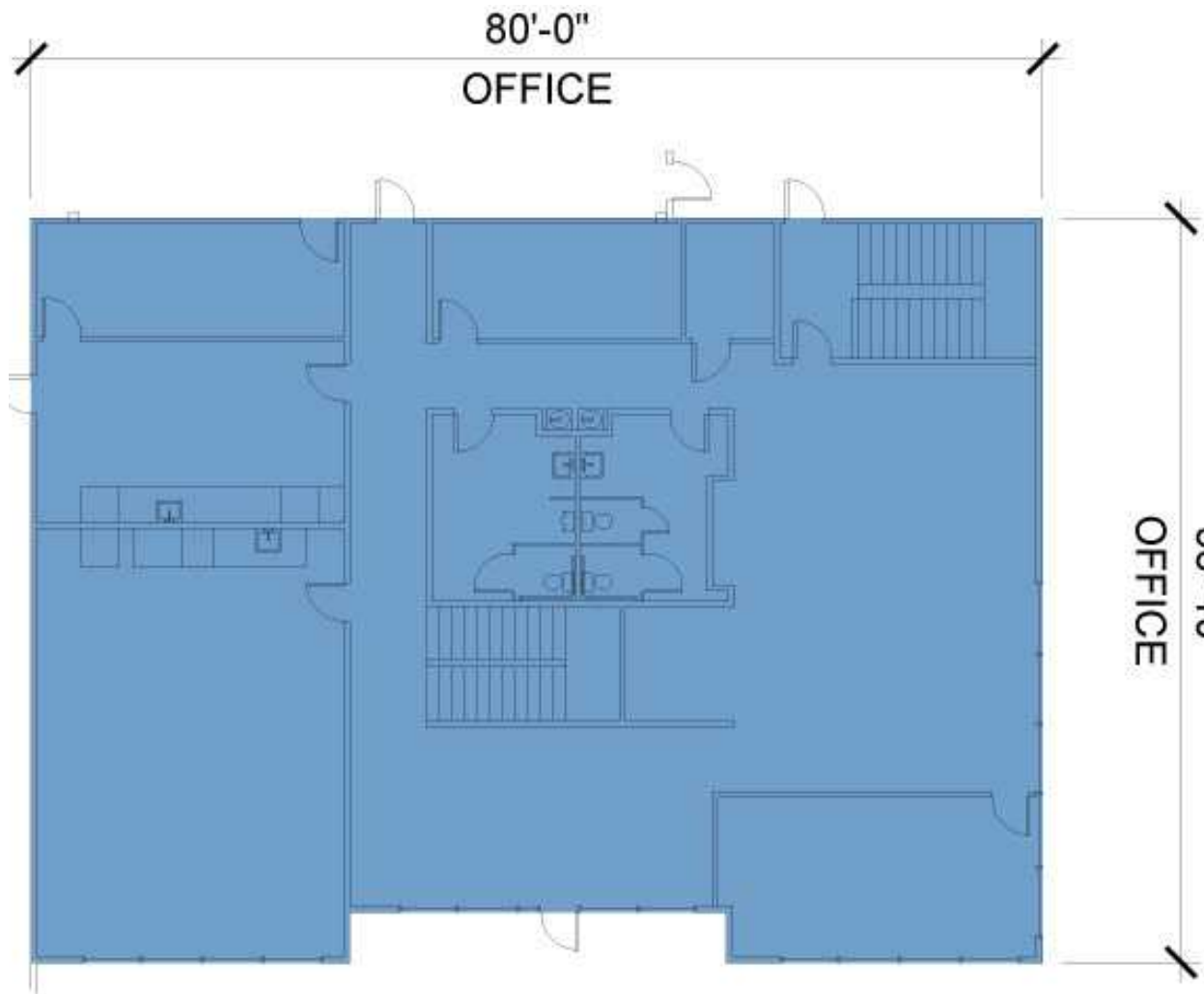
7,216 SF

Office

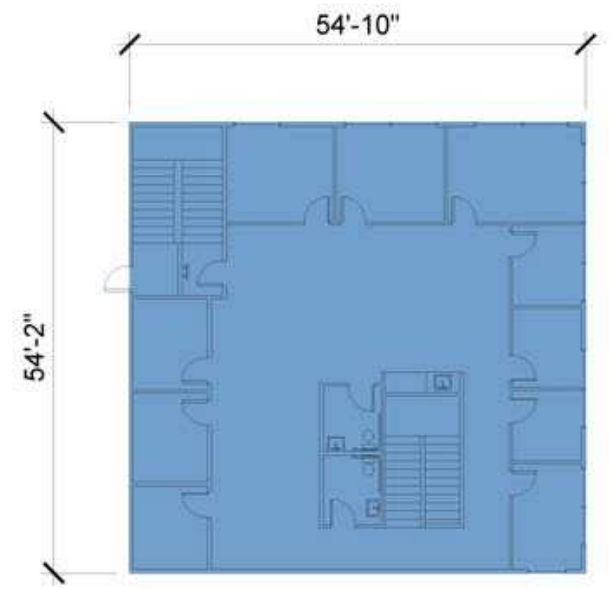
Site Plan



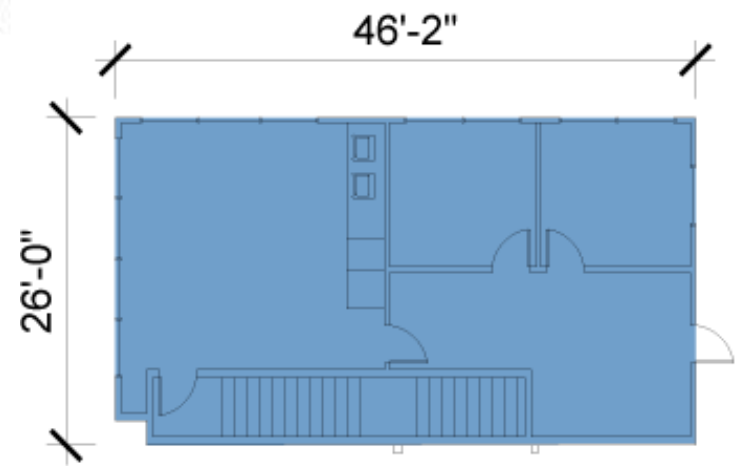
Floor Plans



1st Floor Office



1st Floor Mezzanine



2nd Floor Mezzanine

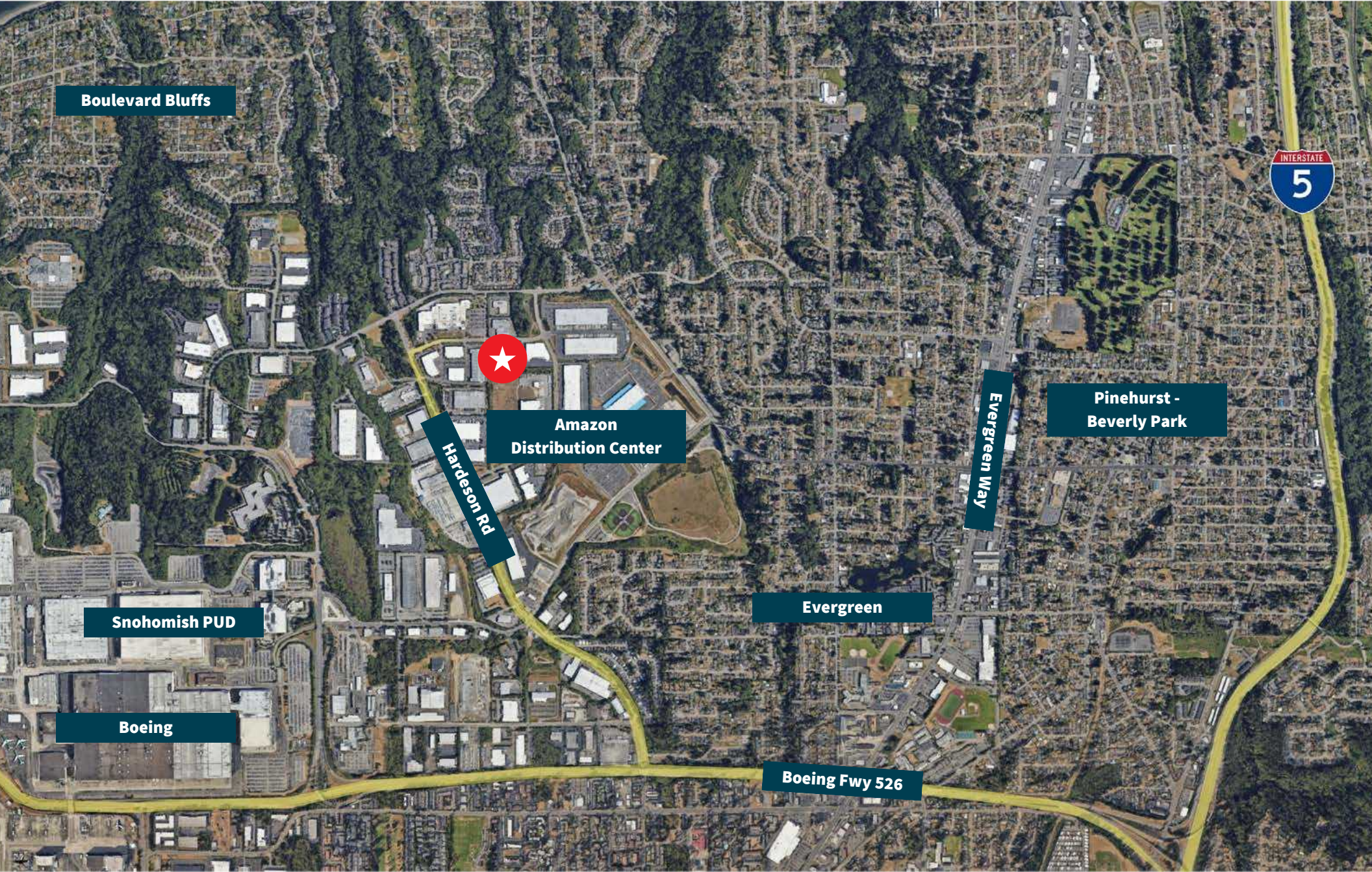
Location

7.5 miles
to Interstate 5

6.2 miles
to Port of Everett

3.9 miles
to Paine Field

1.5 miles
to Boeing Hwy 526



Boulevard Bluffs



Amazon
Distribution Center

Hardeson Rd

Snohomish PUD

Boeing

Evergreen

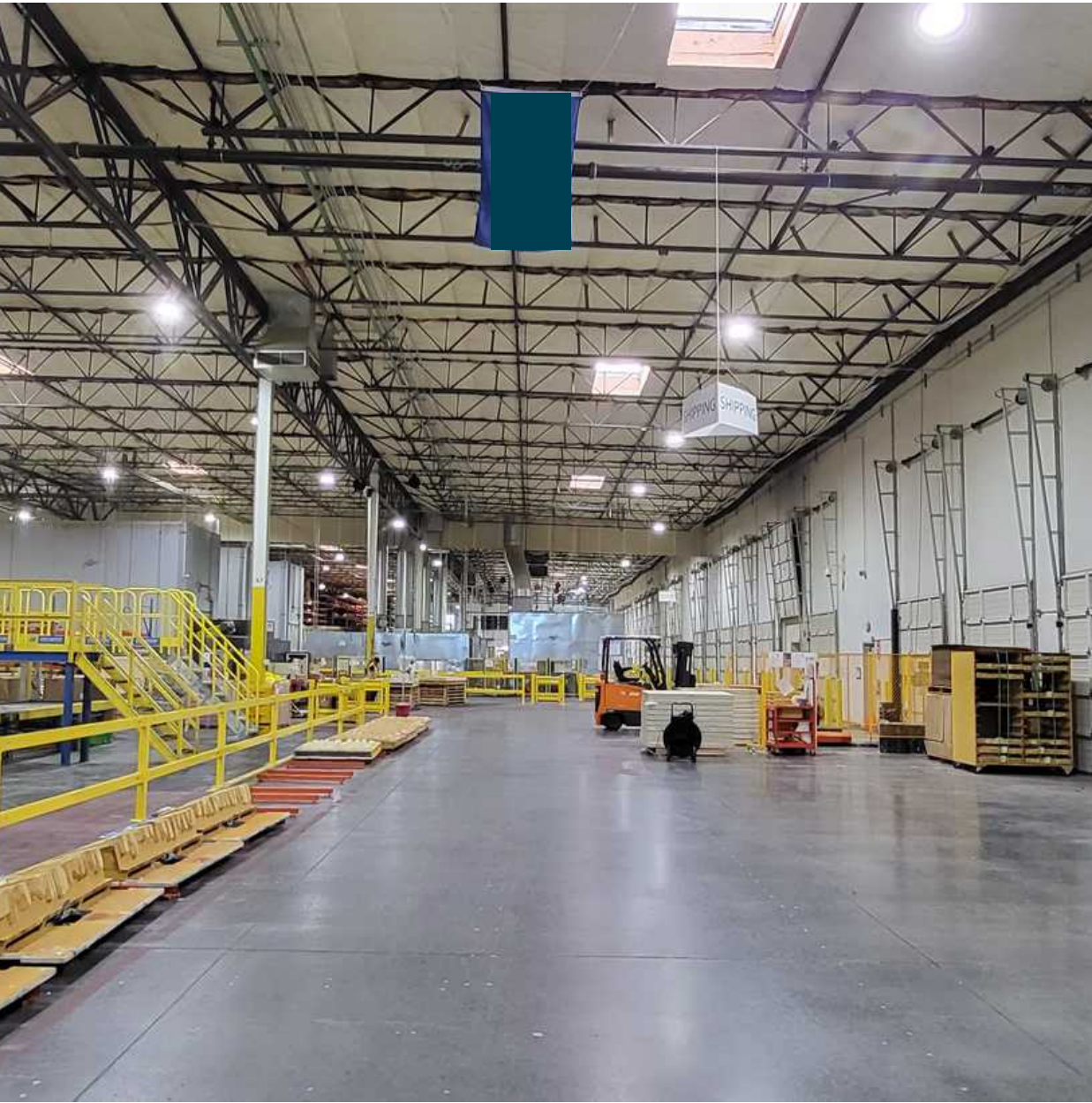
Evergreen Way

Pinehurst -
Beverly Park

Boeing Fwy 526



Warehouse



JLL

Gabe Smith

gabe.smith@jll.com

+1 206 450 0898

Brent Jackson

brent.jackson@jll.com

+1 425 449 2715

Alec Goodwin

alec.goodwin@jll.com

+1 424 421 9245

McKenna Hartman

mckenna.hartman@jll.com

+1 206 245 0708

Jones Lang LaSalle Americas, Inc. License #: CO508577000

Although information has been obtained from sources deemed reliable, neither Owner nor JLL makes any guarantees, warranties or representations, express or implied, as to the completeness or accuracy as to the information contained herein. Any projections, opinions, assumptions or estimates used are for example only. There may be differences between projected and actual results, and those differences may be material. The Property may be withdrawn without notice. Neither Owner nor JLL accepts any liability for any loss or damage suffered by any party resulting from reliance on this information.

If the recipient of this information has signed a confidentiality agreement regarding this matter, this information is subject to the terms of that agreement. ©2023. Jones Lang LaSalle IP, Inc. All rights reserved.