



# AUBURN ITC

## INDUSTRIAL FOR LEASE

14,850 SF total

950 SF office

Easy access to SR-167 via 277th St or 15th St and access to I-5 via 277th St

M-1 zoning

6 dock-high doors

1 grade-level door

Canopies over loading doors

50' concrete aprons

24' clear height

\$1.40 shell rate

\$1.30 office rate

Available now

*For more leasing information contact*

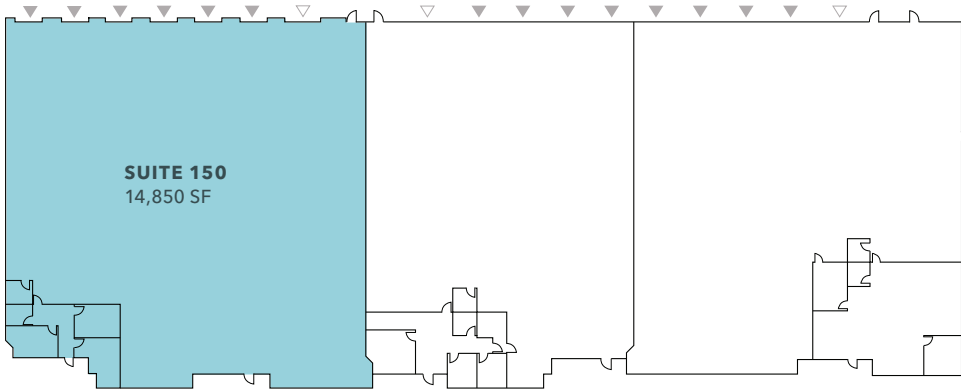
**CHRIS CORR**

206.248.7324

chris.corr@kidder.com

**KIDDER.COM**

FOR LEASE



*14,850 SF*

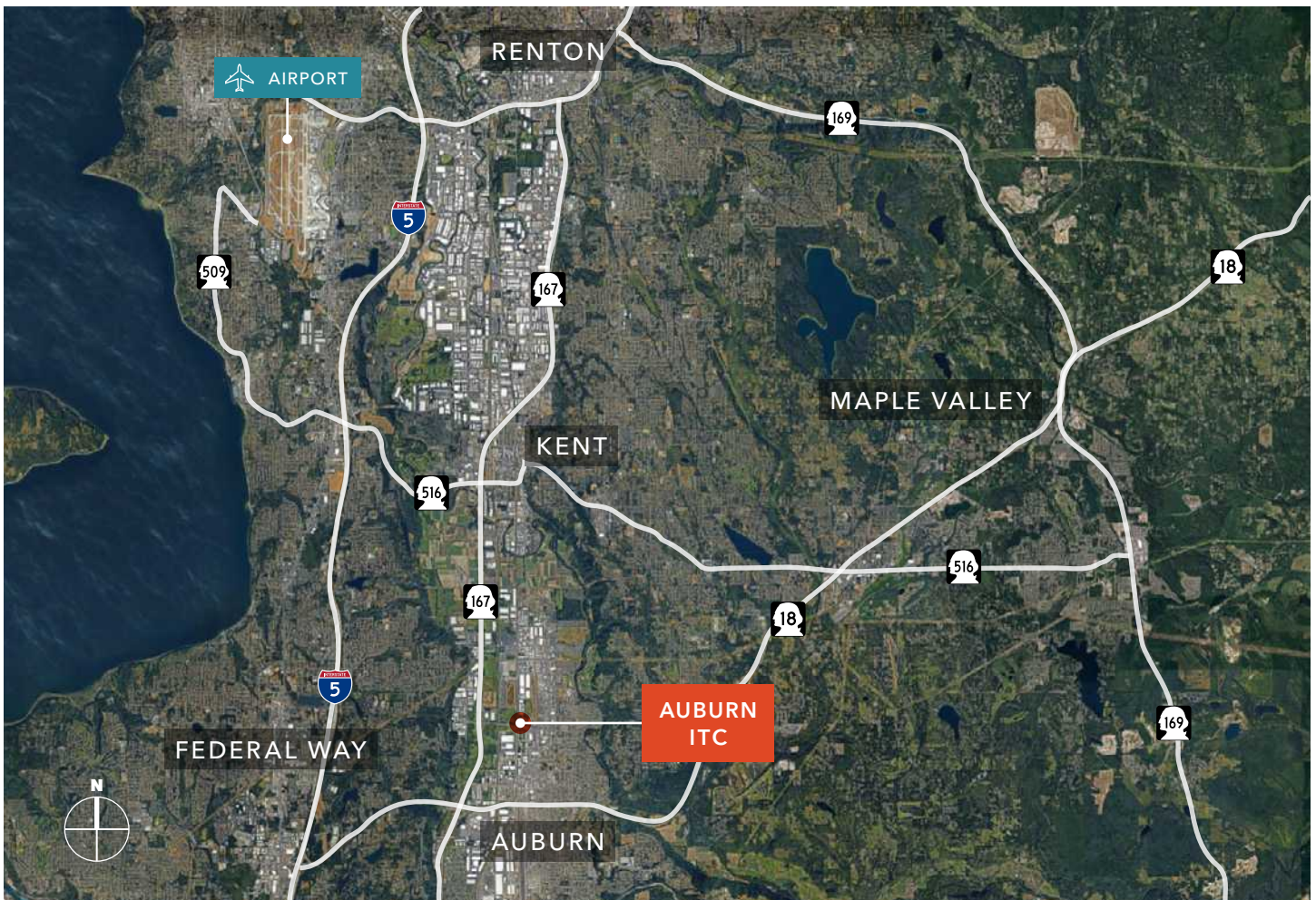
BUILDING B, SUITE 150

*950 SF*

OFFICE

*24'*

CLEAR HEIGHT



[KIDDER.COM](http://KIDDER.COM)

This information supplied herein is from sources we deem reliable. It is provided without any representation, warranty, or guarantee, expressed or implied as to its accuracy. Prospective Buyer or Tenant should conduct an independent investigation and verification of all matters deemed to be material, including, but not limited to, statements of income and expenses. Consult your attorney, accountant, or other professional advisor.

