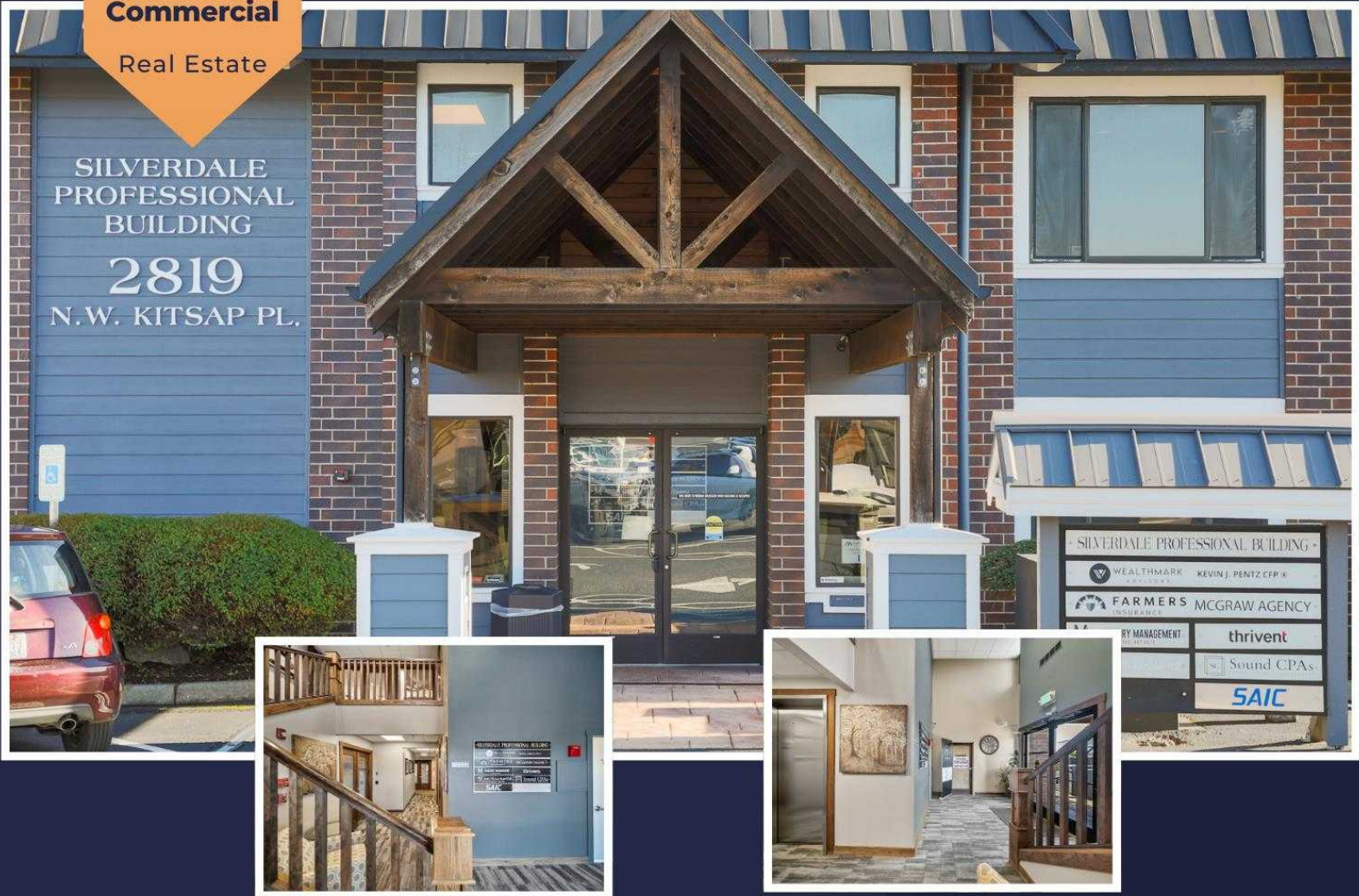


Morse
&Brown
Commercial
Real Estate

\$18/SF + NNN



OFFICE FOR LEASE

Conveniently located in the heart of Silverdale. Shell space ready to build to suit. Beautiful building, managed with tenants in mind. Plenty of Parking.

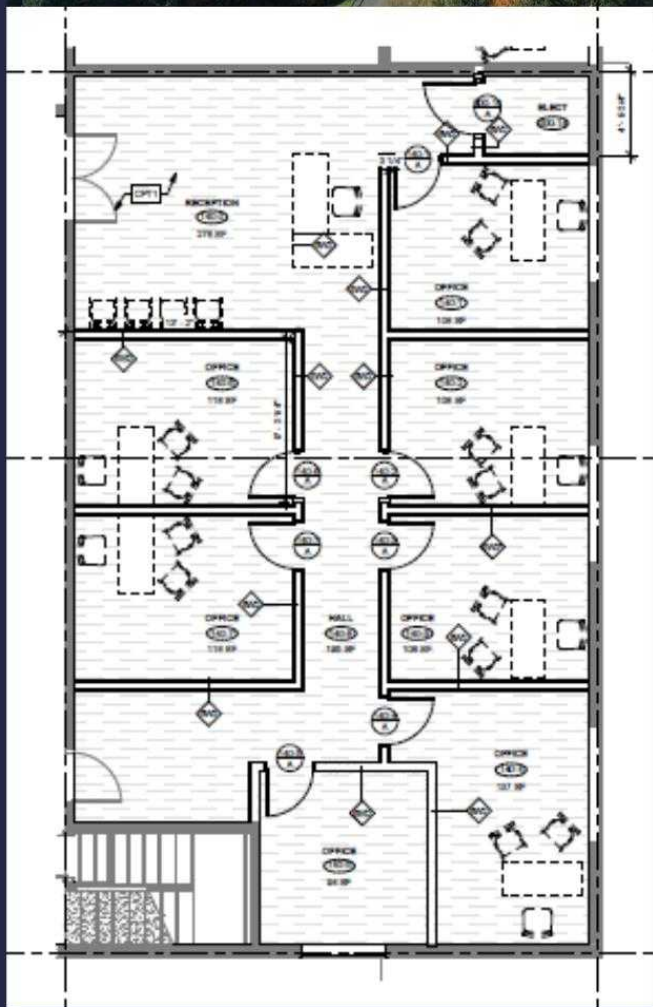
SUITE FEATURES

- ✓ Approx. 1,719sf
- ✓ Divisible
- ✓ NNN approx. \$6/sf
- ✓ Utilities Included
- ✓ Heart of Silverdale

CONTACT US NOW

360-207-0280

daniel@morseandbrown.com



Possible Buildout

- **Build to Suite**
- **Can be reduced to 860sf**
- **Conveniently located along Ridgetop Blvd**
- **Accessible from main bus lines**
- **Quiet & professional**