

FOR LEASE

WOODINVILLE COMMERCE CENTER

*Industrial / Office Spaces
Available in Woodinville*

18500 - 18808 142ND AVE NE
WOODINVILLE, WA



KIDDER.COM

km Kidder
Mathews

AVAILABILITIES

BUILDING A

	Office	Warehouse	Total
SUITE 2A	831 SF	969 SF	1,800 SF
SUITE 3B	1,040 SF	933 SF	1,973 SF

BUILDING E

	Office	Warehouse	Total
SUITE 18672	1,250 SF	0 SF	1,250 SF
SUITE 18678	1,250 SF	0 SF	1,250 SF

BUILDING F

	Office	Warehouse	Total
SUITES 18562 / 18564	49 SF	3,007 SF	3,056 SF

BUILDING G

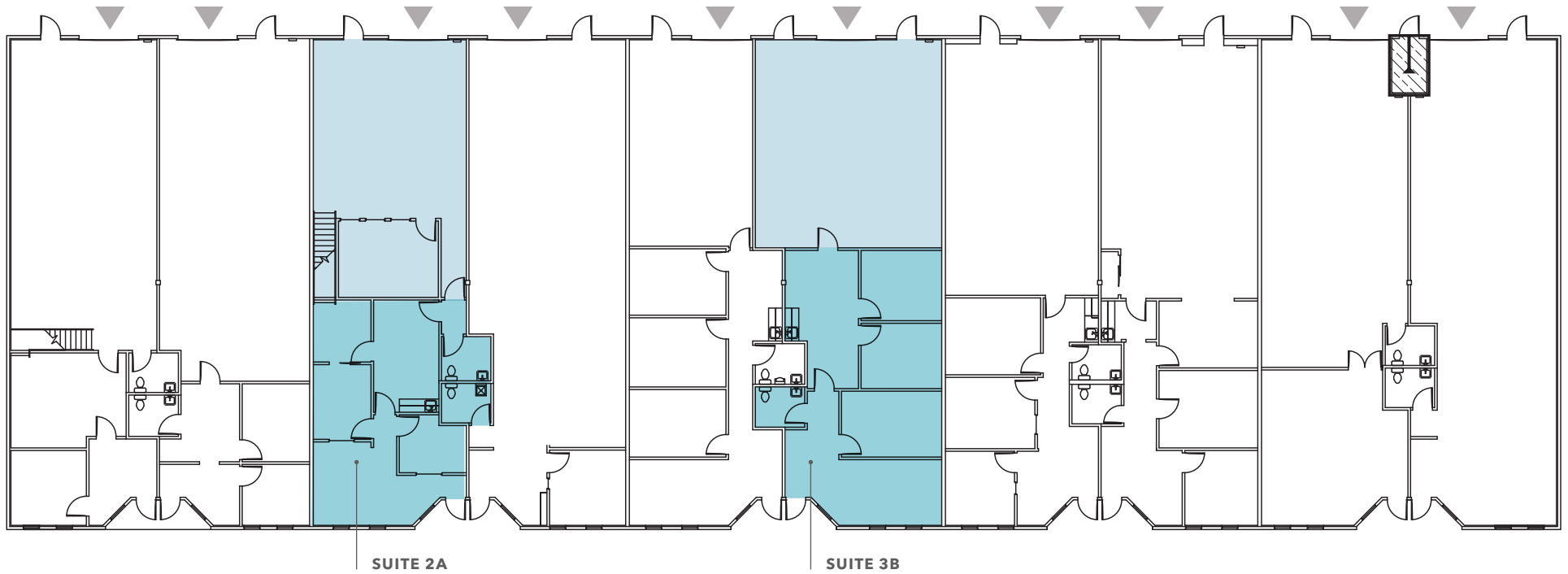
	Office	Warehouse	Total
SUITE 18502	0 SF	2,806 SF	2,806 SF
SUITE 18550	625 SF	0 SF	625 SF



BUILDING A

LEGEND

- Office
- Warehouse
- ▲ Grade-Level Loading



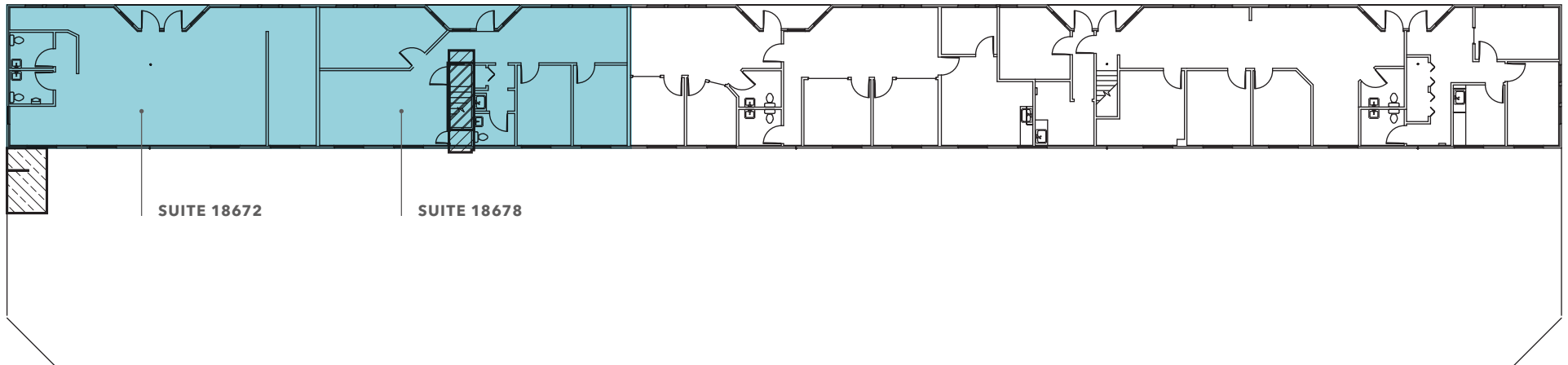
Suite	Total Area	Office/Warehouse	Monthly Base Rent	NNN	Loading	Available	Notes
2A	1,800 SF	831 SF / 969 SF	\$3,163.95	\$900.00	Grade-Level	30-Day Notice	
3B	1,973 SF	1,040 SF / 933 SF	\$3,526.00	\$986.50	Grade-Level	Now	

BUILDING E

LEGEND

- Office
- Warehouse
- ▲ Grade-Level Loading

UPPER LEVEL



Suite	Total Area	Office/Warehouse	Monthly Base Rent	NNN	Loading	Available	Notes
18672	1,250	1,250/0	\$2,500	\$625.00	N/A	Now	Deli/Catering Space
18678	1,250	1,250/0	\$2,500	\$625.00	N/A	Now	

BUILDING F

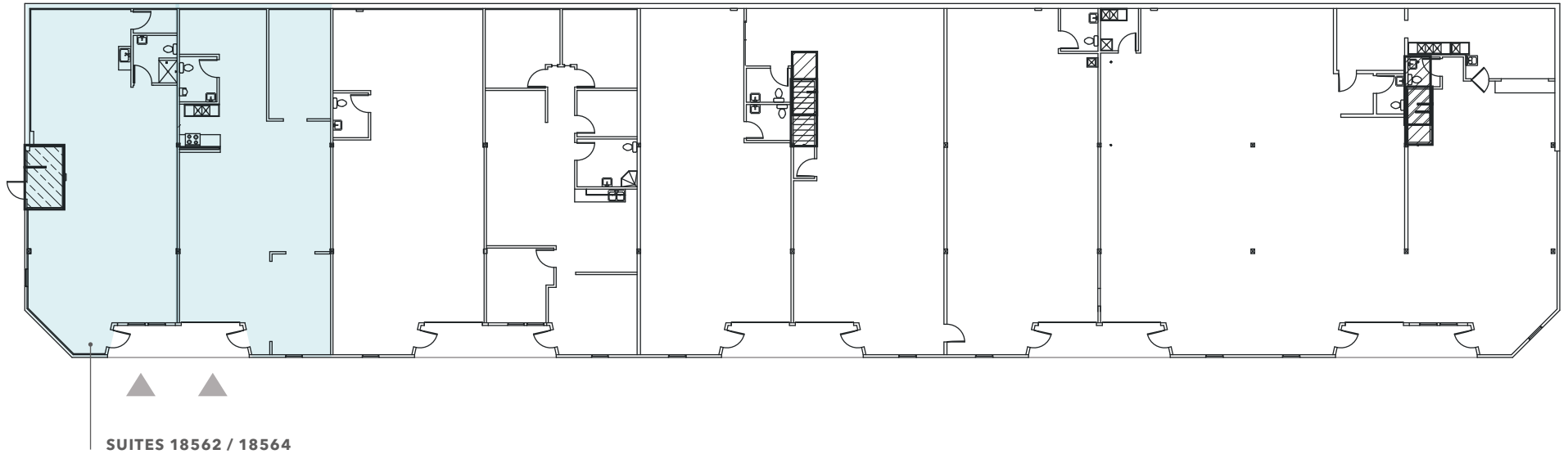
LOWER LEVEL

LEGEND

■ Office

■ Warehouse

▲ Grade-Level Loading



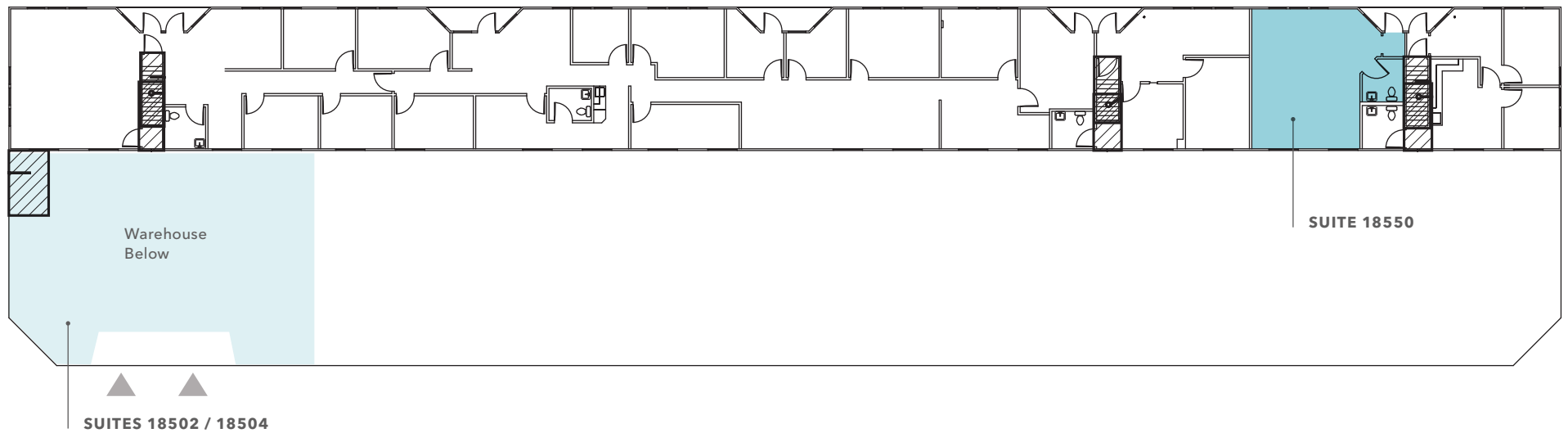
Suite	Total Area	Office/Warehouse	Monthly Base Rent	NNN	Loading	Available	Notes
18562 / 18564	3,056 SF	49 SF / 3,007 SF	\$4,750.00	\$1,528.00	Grade-Level	Now	Wine production space with outdoor seating

BUILDING G

UPPER LEVEL

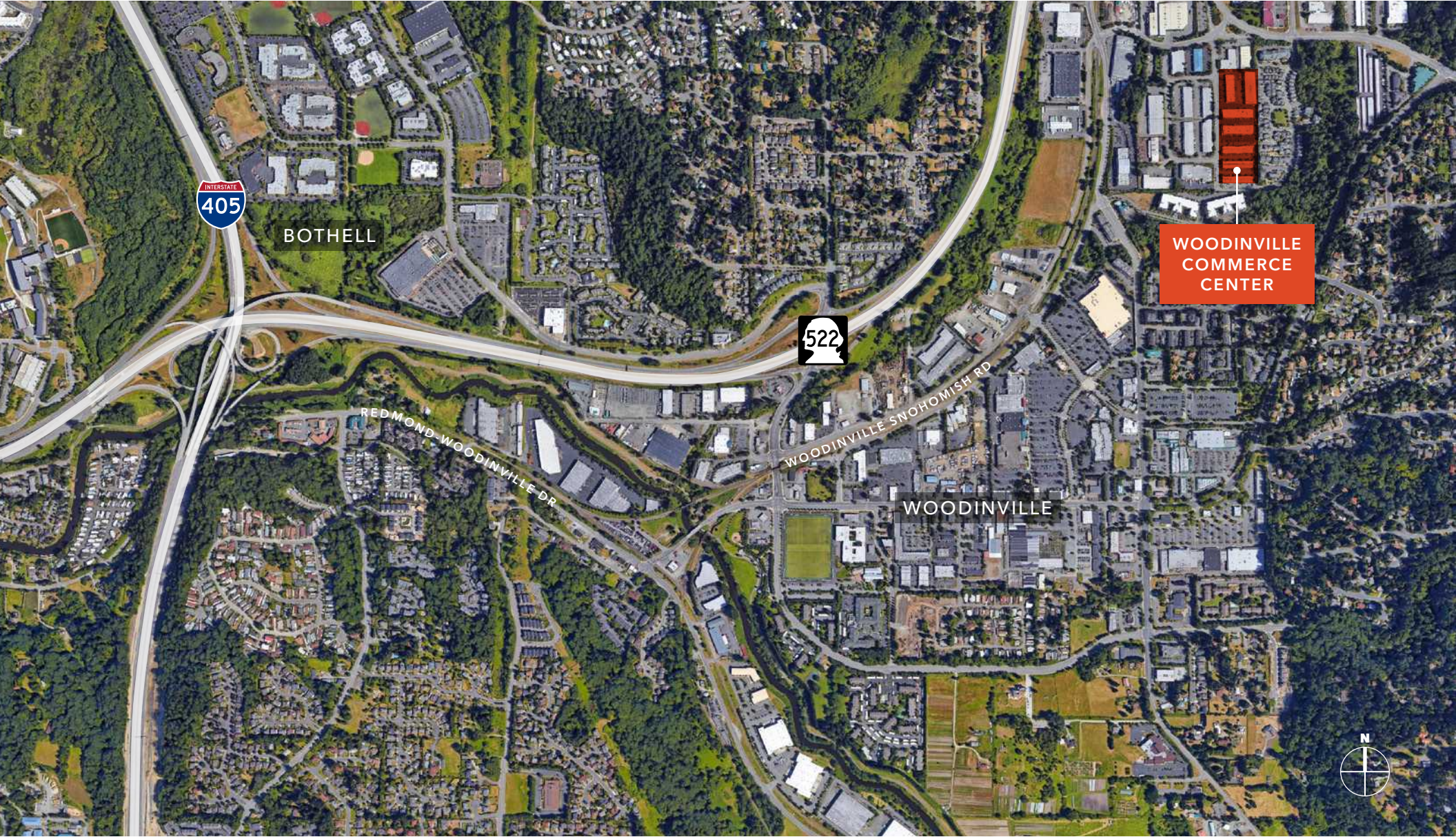
LEGEND

- Office
- Warehouse
- ▲ Grade-Level Loading



Suite	Total Area	Office/Warehouse	Monthly Base Rent	NNN	Loading	Available	Notes
18502	2,806 SF	0 SF / 2,806 SF	\$4,349.30	\$1,403.00	Grade-Level	Now	
18550	625 SF	625 SF / 0 SF	\$1,250	\$281.25	None	30-Day Notice	

WOODINVILLE COMMERCE CENTER



BOTHELL



REDMOND WOODINVILLE DR

WOODINVILLE SNOHOMISH RD

WOODINVILLE

WOODINVILLE
COMMERCE
CENTER





WOODINVILLE COMMERCE CENTER

*Exclusively
Listed by*

TODD GAUTHIER
Executive Vice President
425.450.1118
todd.gauthier@kidder.com

JASON BLOOM
Executive Vice President
425.450.1102
jason.bloom@kidder.com

CARTER NICHOLSON
Associate
425.450.1145
carter.nicholson@kidder.com

KIDDER.COM

This information supplied herein is from sources we deem reliable. It is provided without any representation, warranty, or guarantee, expressed or implied as to its accuracy. Prospective Buyer or Tenant should conduct an independent investigation and verification of all matters deemed to be material, including, but not limited to, statements of income and expenses. Consult your attorney, accountant, or other professional advisor.

