

FOR LEASE

WOODINVILLE COMMERCE CENTER

*Industrial / Office Spaces
Available in Woodinville*

18500 - 18808 142ND AVE NE
WOODINVILLE, WA



KIDDER.COM

km Kidder
Mathews

AVAILABILITIES

BUILDING A

| | Office | Warehouse | Total |
|----------|----------|-----------|----------|
| SUITE 2A | 831 SF | 969 SF | 1,800 SF |
| SUITE 3B | 1,040 SF | 933 SF | 1,973 SF |

BUILDING E

| | Office | Warehouse | Total |
|-------------|----------|-----------|----------|
| SUITE 18672 | 1,250 SF | 0 SF | 1,250 SF |
| SUITE 18678 | 1,250 SF | 0 SF | 1,250 SF |

BUILDING F

| | Office | Warehouse | Total |
|----------------------|--------|-----------|----------|
| SUITES 18562 / 18564 | 49 SF | 3,007 SF | 3,056 SF |

BUILDING G

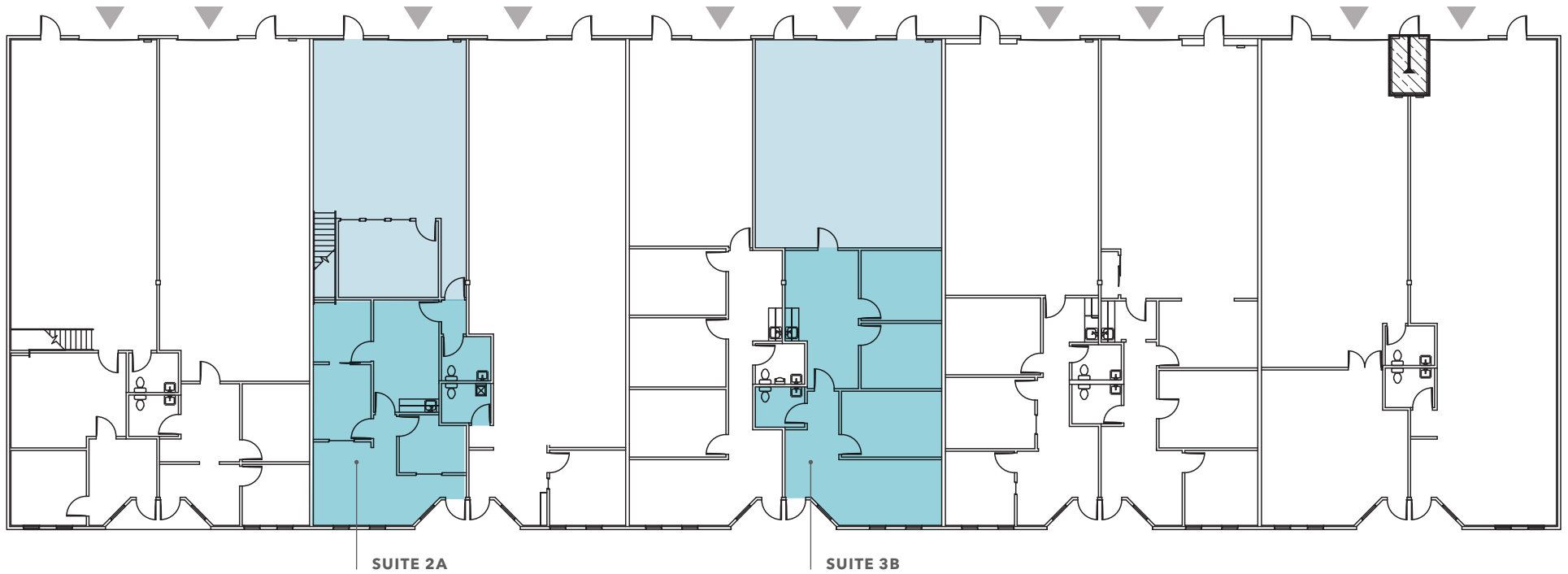
| | Office | Warehouse | Total |
|-------------|--------|-----------|----------|
| SUITE 18502 | 0 SF | 2,806 SF | 2,806 SF |
| SUITE 18550 | 625 SF | 0 SF | 625 SF |



BUILDING A

LEGEND

- Office
- Warehouse
- ▲ Grade-Level Loading



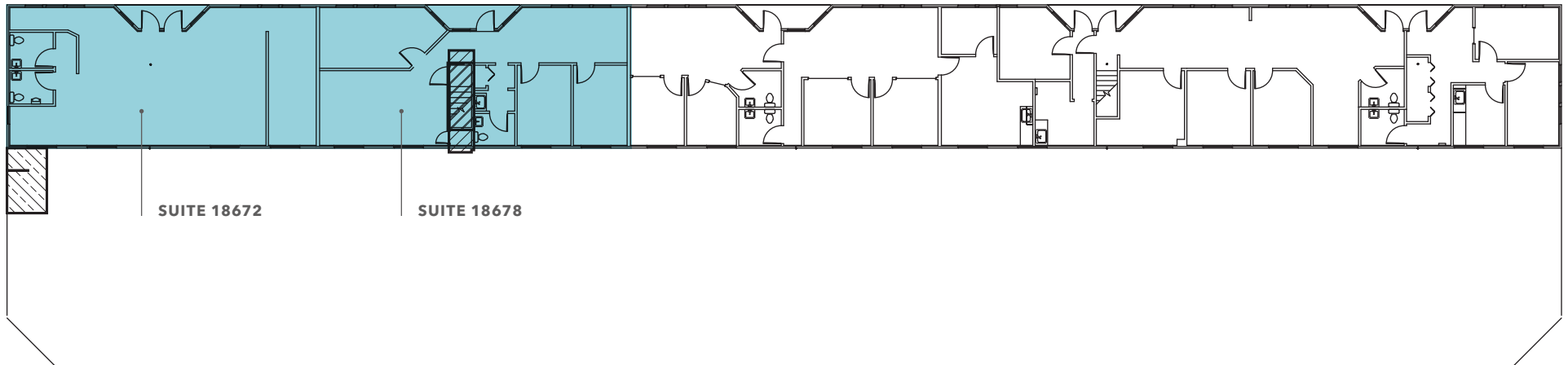
| Suite | Total Area | Office/Warehouse | Monthly Base Rent | NNN | Loading | Available | Notes |
|-------|------------|-------------------|-------------------|----------|-------------|---------------|-------|
| 2A | 1,800 SF | 831 SF / 969 SF | \$3,163.95 | \$900.00 | Grade-Level | 30-Day Notice | |
| 3B | 1,973 SF | 1,040 SF / 933 SF | \$3,526.00 | \$986.50 | Grade-Level | Now | |

BUILDING E

LEGEND

- Office
- Warehouse
- ▲ Grade-Level Loading

UPPER LEVEL



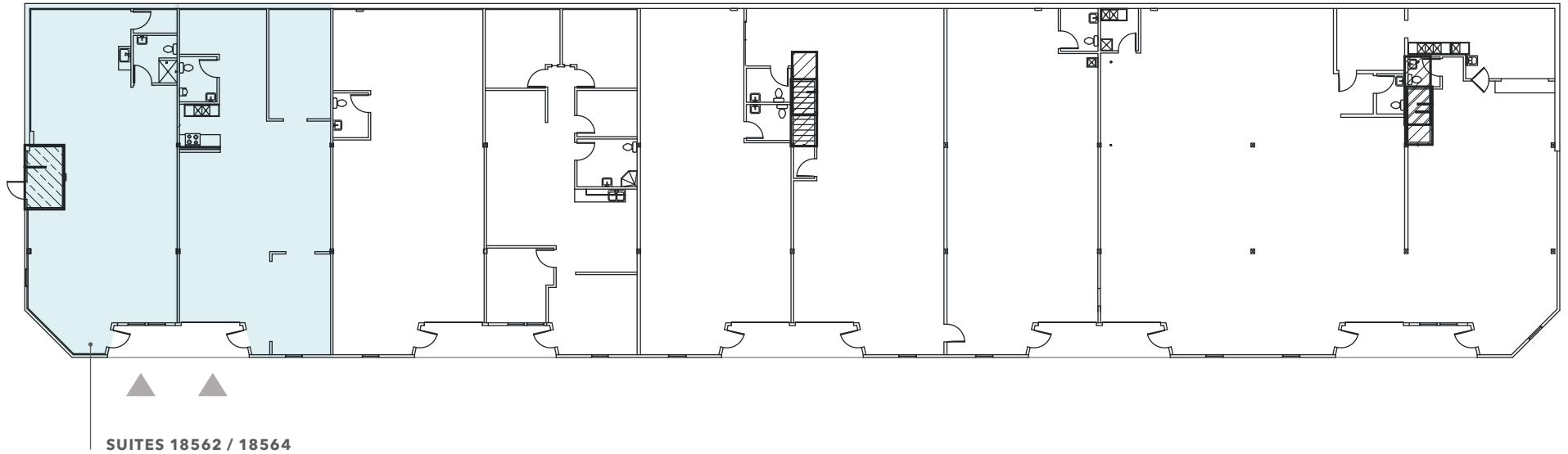
| Suite | Total Area | Office/Warehouse | Monthly Base Rent | NNN | Loading | Available | Notes |
|-------|------------|------------------|-------------------|----------|---------|-----------|---------------------|
| 18672 | 1,250 | 1,250/0 | \$2,500 | \$625.00 | N/A | Now | Deli/Catering Space |
| 18678 | 1,250 | 1,250/0 | \$2,500 | \$625.00 | N/A | Now | |

BUILDING F

LOWER LEVEL

LEGEND

- Office
- Warehouse
- ▲ Grade-Level Loading



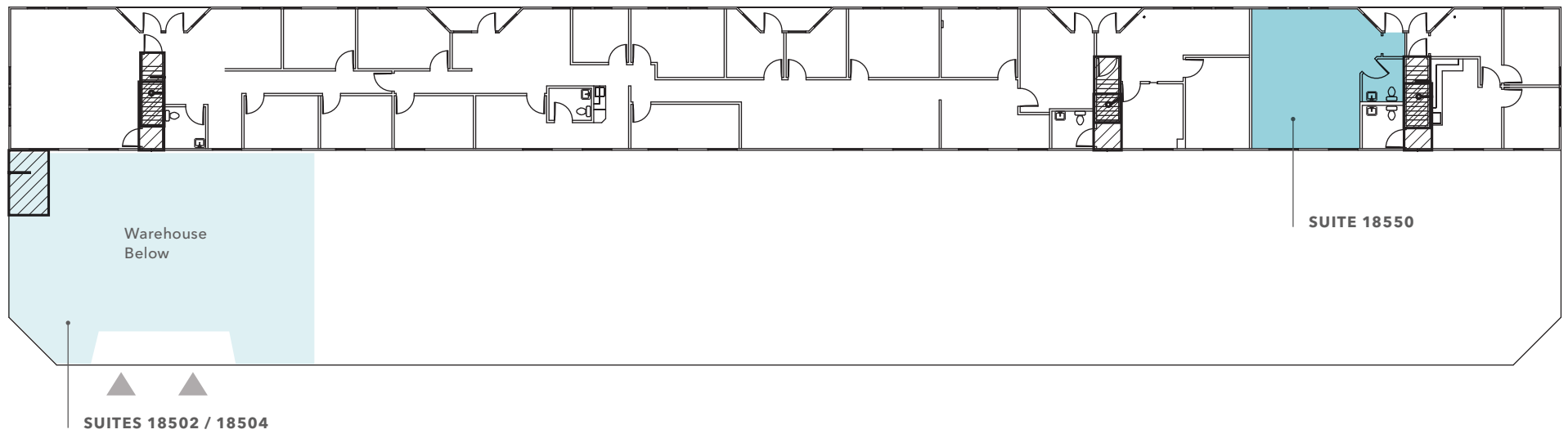
| Suite | Total Area | Office/Warehouse | Monthly Base Rent | NNN | Loading | Available | Notes |
|---------------|------------|------------------|-------------------|------------|-------------|-----------|--|
| 18562 / 18564 | 3,056 SF | 49 SF / 3,007 SF | \$4,750.00 | \$1,528.00 | Grade-Level | Now | Wine production space with outdoor seating |

BUILDING G

LEGEND

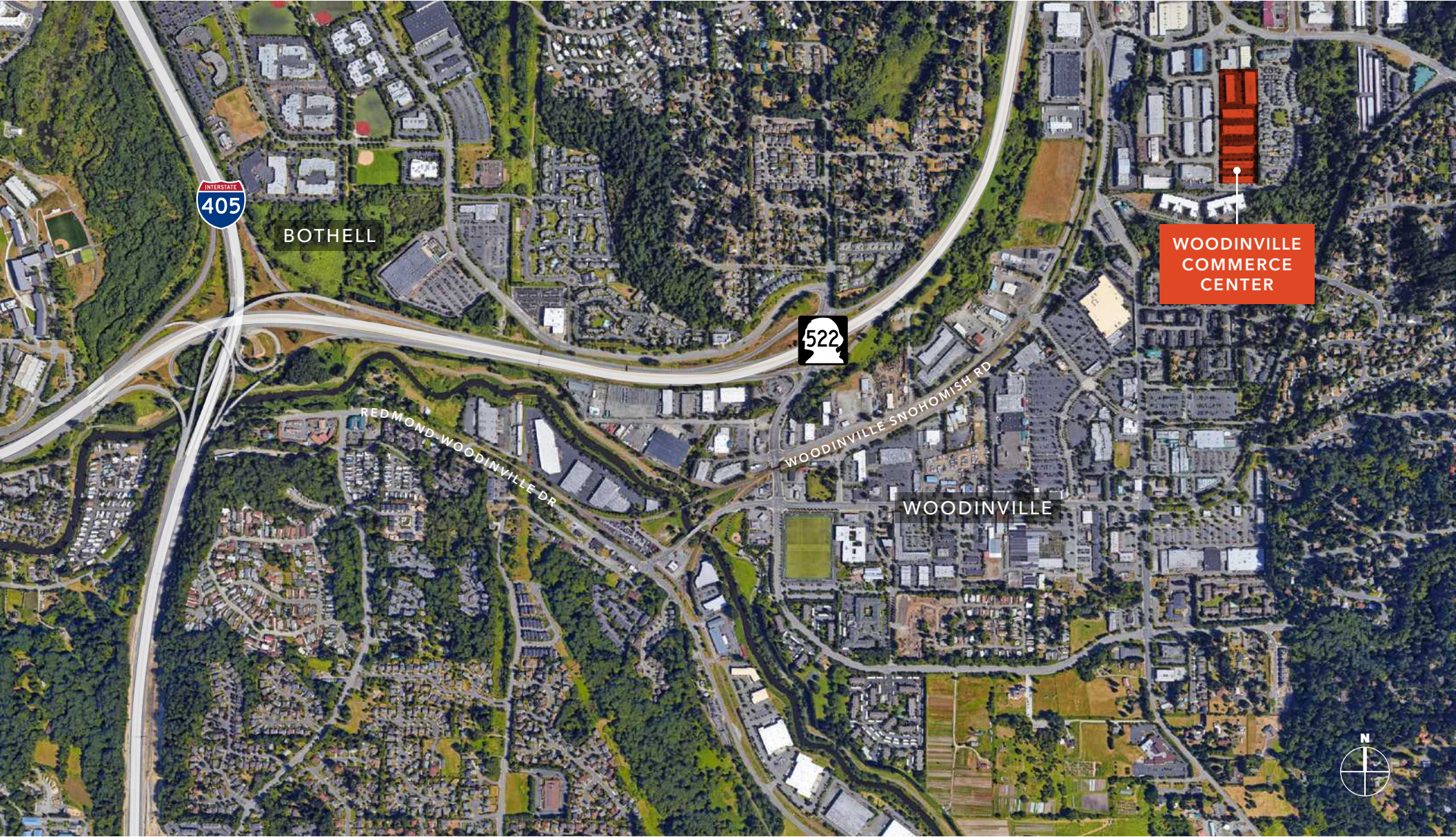
- Office
- Warehouse
- ▲ Grade-Level Loading

UPPER LEVEL



| Suite | Total Area | Office/Warehouse | Monthly Base Rent | NNN | Loading | Available | Notes |
|-------|------------|------------------|-------------------|------------|-------------|---------------|-------|
| 18502 | 2,806 SF | 0 SF / 2,806 SF | \$4,349.30 | \$1,403.00 | Grade-Level | Now | |
| 18550 | 625 SF | 625 SF / 0 SF | \$1,250 | \$281.25 | None | 30-Day Notice | |

WOODINVILLE COMMERCE CENTER



BOTHELL



WOODINVILLE
COMMERCE
CENTER

REDMOND WOODINVILLE DR

WOODINVILLE SNOHOMISH RD

WOODINVILLE





WOODINVILLE COMMERCE CENTER

*Exclusively
Listed by*

TODD GAUTHIER
Executive Vice President
425.450.1118
todd.gauthier@kidder.com

JASON BLOOM
Executive Vice President
425.450.1102
jason.bloom@kidder.com

CARTER NICHOLSON
Associate
425.450.1145
carter.nicholson@kidder.com

KIDDER.COM

This information supplied herein is from sources we deem reliable. It is provided without any representation, warranty, or guarantee, expressed or implied as to its accuracy. Prospective Buyer or Tenant should conduct an independent investigation and verification of all matters deemed to be material, including, but not limited to, statements of income and expenses. Consult your attorney, accountant, or other professional advisor.

