

# REDWOOD

## BUILDING

845 106TH AVENUE NE | BELLEVUE, WA

BRODERICK  
· GROUP ·

SMALL  
OFFICE SUITES  
AVAILABLE



PRIME LOCATION ADJACENT TO ALL THE AMENITIES OF BELLEVUE PLACE/HYATT  
REGENCY - SAME PROFESSIONAL MANAGEMENT (KEMPER DEVELOPMENT CO.)

# REDWOOD BUILDING

845 106TH AVENUE NE | BELLEVUE, WA

## BUILDING FEATURES

- Two-story building over covered parking
- Below market parking costs at \$100 per space per month before WSST. Other parking in Downtown Bellevue is typically \$250+
- Located adjacent to Bellevue Place; enjoy access and amenities of Bellevue CBD
- Owned by Kemper Development Company and professionally managed

## AVAILABLE SPACE

<b><u>SUITE 206</u></b>	<b>1,387 RSF</b>	<ul style="list-style-type: none"><li>• Available with 30 days' notice</li><li>• Rental Rate: \$4,100/month, Full Service</li></ul>
<b><u>SUITE 205</u></b>	<b>630 RSF</b>	<ul style="list-style-type: none"><li>• Available Now</li><li>• Rental Rate: \$1,850/month, Full Service</li></ul>
<b><u>SUITE 110</u></b>	<b>540 RSF</b>	<ul style="list-style-type: none"><li>• Available 12/1/24</li><li>• Rental Rate: \$1,675/month, Full Service</li></ul>
<b><u>SUITE 102</u></b>	<b>356 RSF</b>	<ul style="list-style-type: none"><li>• Available 12/1/24</li><li>• Rental Rate: \$1,100/month, Full Service</li></ul>
<b><u>SUITE 101</u></b>	<b>399 RSF</b>	<ul style="list-style-type: none"><li>• Available Now</li><li>• Rental Rate: \$1,390/month, Full Service</li></ul>

## LOCATION

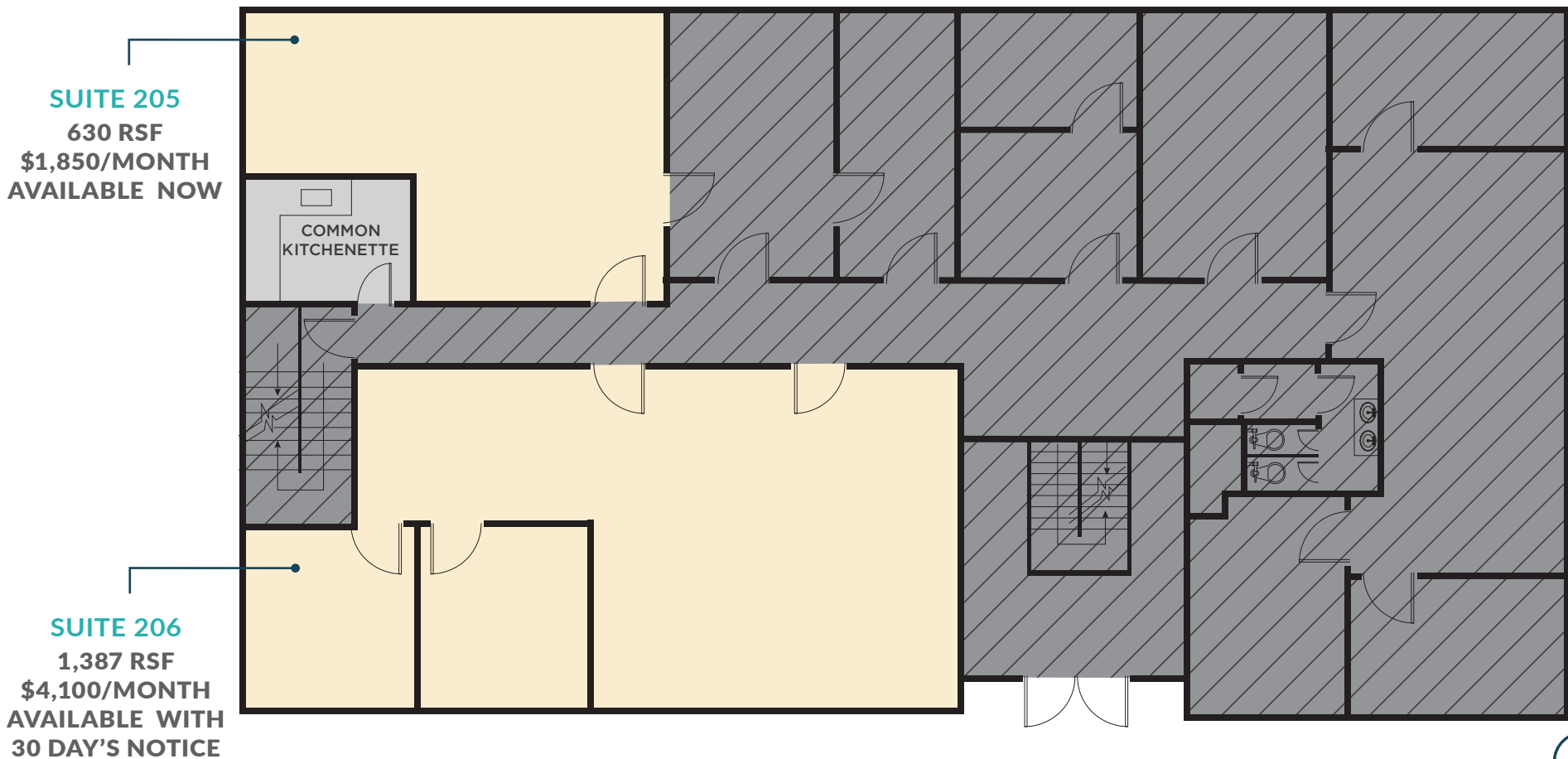


# REDWOOD

## BUILDING

845 106TH AVENUE NE | BELLEVUE, WA

### FLOOR 2



For more information or to schedule a tour, please contact:

**CLAYTON HOLM** | 425.274.4287 | [holm@broderickgroup.com](mailto:holm@broderickgroup.com)

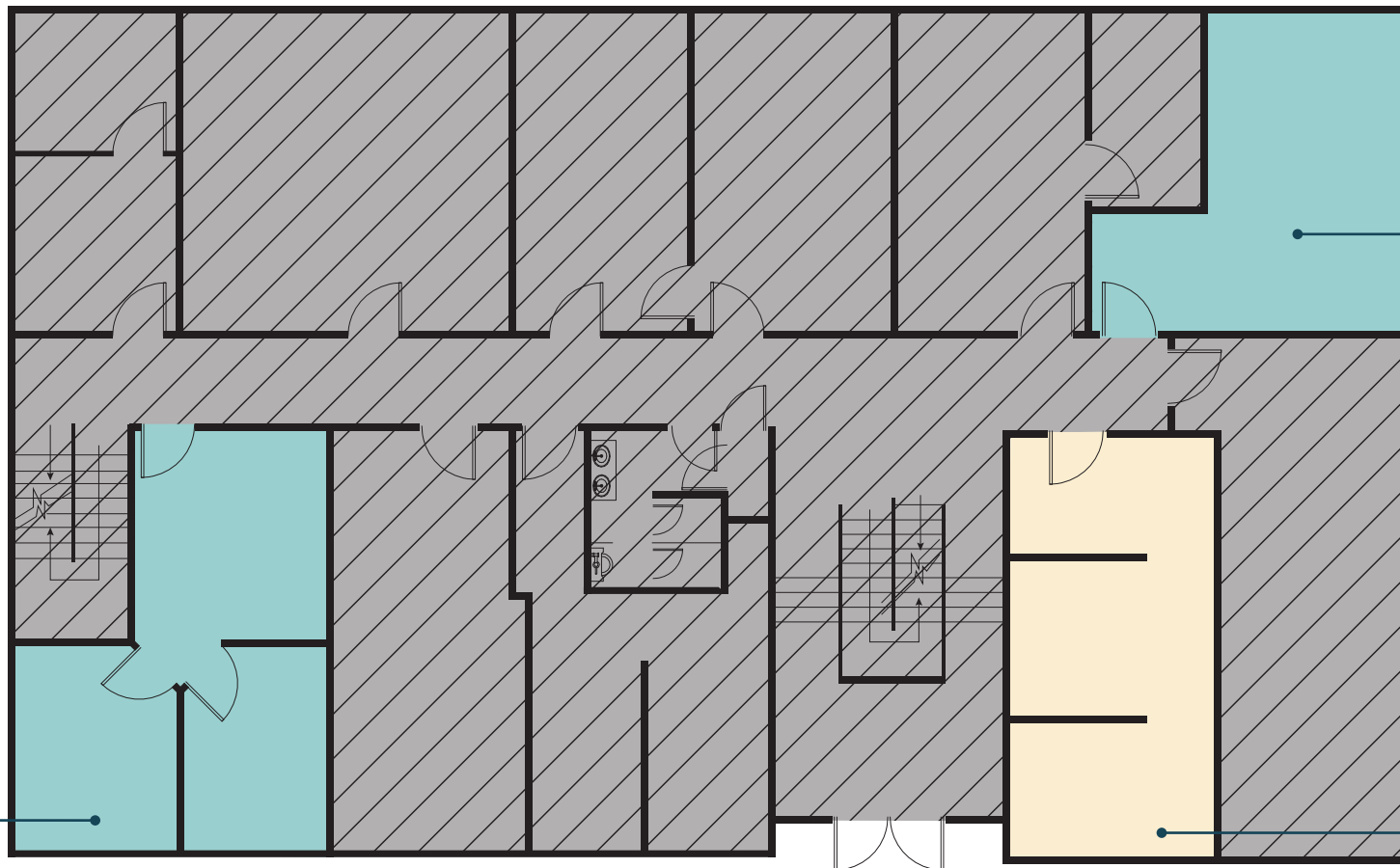
The information contained herein has been given to us by the owner or sources that we deem reliable. We have no reason to doubt its accuracy, but we do not guarantee it. Prospective tenants should carefully verify all information contained herein.

# REDWOOD

## BUILDING

845 106TH AVENUE NE | BELLEVUE, WA

### FLOOR 1



**SUITE 110**  
540 RSF  
\$1,675/MONTH  
AVAILABLE  
12/1/24

**SUITE 101**  
399 RSF  
\$1,390/MONTH  
AVAILABLE NOW

**SUITE 102**  
356 RSF  
\$1,100/MONTH  
AVAILABLE 12/1/24

BACK TO AVAILABLE SPACE ↑

