

For Lease
Office

NAIBlack



1717 W Northwest Blvd

Spokane, Washington 99205

Property Highlights

Newly Remodeled Office Spaces for Lease - Second Floor Suites with Modern Finishes

Located just off Northwest Blvd is an established building offering newly remodeled office spaces with high-quality finishes. Positioned on the second floor, these suites provide leasing flexibility, allowing businesses to lease individual spaces or combined suites for a larger, customized layout. Rental rate is highly competitive at **\$12 per SF/Yr, modified gross**.

- Total Building Size: 8,259 SF ±
- Second-Floor Suite Availability:
 - Suite 1: 550 SF – Compact, efficient space suited for small offices
 - Suite 2A: 395 SF – Ideal for startups or individual professionals
 - Suite 2B: 1,254 SF – Corner suite featuring ample natural light and an exclusive conference room, perfect for collaborative or client meetings
 - Suite 2C: 1,446 SF – Spacious suite, ideal for a salon
- Flexible Configuration: All Suites are Located on the Second Floor and can be Combined to Create a Cohesive, Larger Workspace
- New Modern Finishes: Recently Remodeled with Premium Materials for a Fresh and Professional Look
- Ample Parking: On-site Parking Offers Convenience for Both Employees and Clients
- Easy Accessibility: Prime Location Just Off Northwest Blvd, Providing Quick Access to Key Spokane Destinations
- Common Kitchen Area: Shared Kitchen Space Enhances Convenience and Functionality for all Tenants



For more information

Jesse Clark

O: 509 622 3534

jesse.clark@naiblack.com

No warranty or representation, expression or implied, is made as to the accuracy of the information contained herein, and the same is submitted subject to errors, omissions, change or price, rental or other conditions, prior to sale, lease, financing, or withdrawal without notice, and of special listing conditions imposed by our principals no warranties or representations are made as to the condition of the property or any hazards contained therein or any to be implied.

801 W. Riverside Avenue, Suite 300
Spokane, WA 99201
509 623 1000 tel
naiblack.com

For Lease
Office



Ste. 1

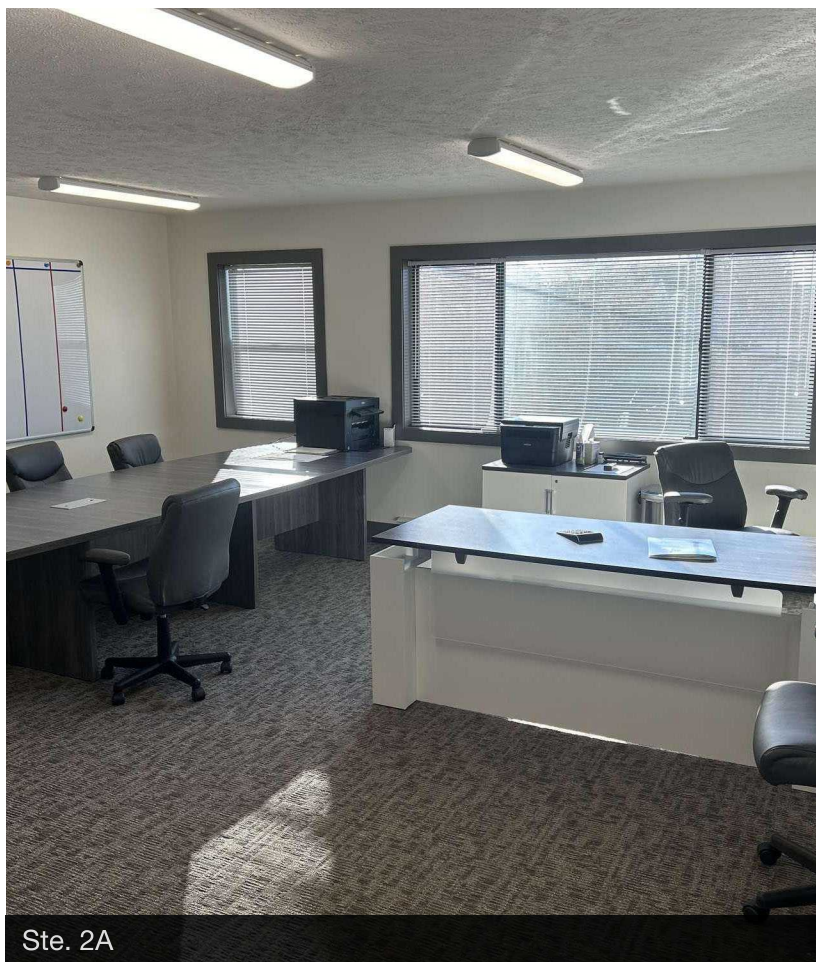


NAIBlack

Ste. 1



Ste. 1



Ste. 2A

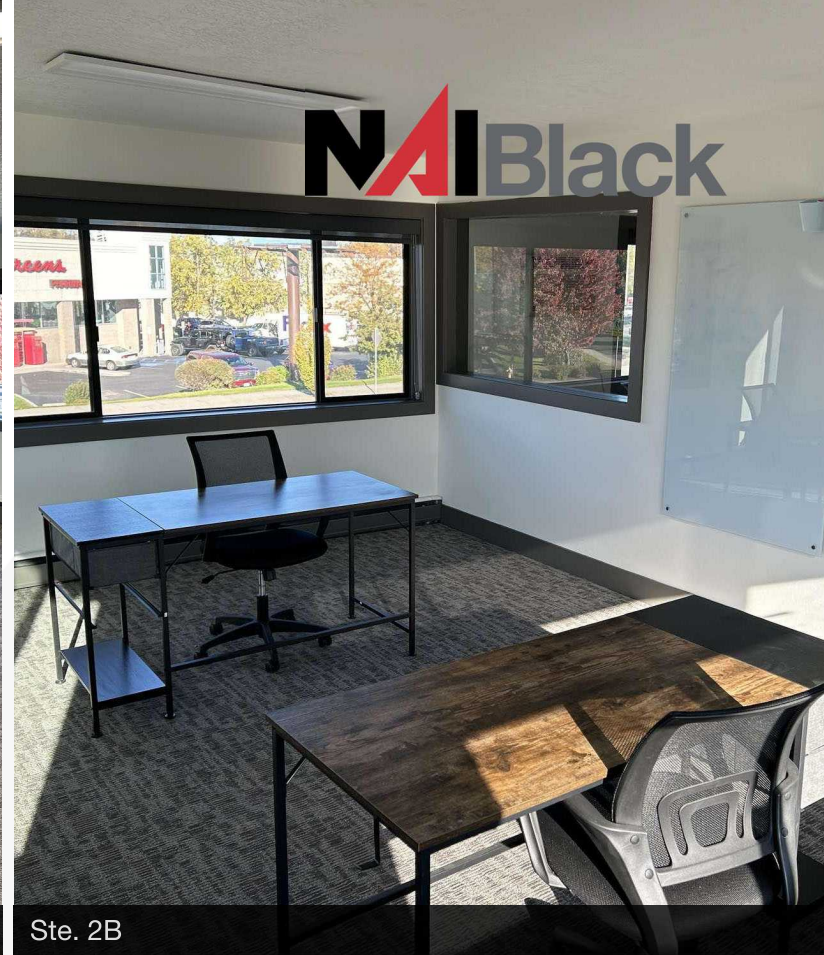
No warranty or representation, expression or implied, is made as to the accuracy of the information contained herein, and the same is submitted subject to errors, omissions, change or price, rental or other conditions, prior to sale, lease, financing, or withdrawal without notice, and of special listing conditions imposed by our principals no warranties or representations are made as to the condition of the property or any hazards contained therein or any to be implied.

801 W. Riverside Avenue, Suite 300
Spokane, WA 99201
509 623 1000 tel
naiblack.com

For Lease
Office



Ste. 2B



NAIBlack

Ste. 2B



Ste. 2B



Ste. 2B

No warranty or representation, expression or implied, is made as to the accuracy of the information contained herein, and the same is submitted subject to errors, omissions, change or price, rental or other conditions, prior to sale, lease, financing, or withdrawal without notice, and of special listing conditions imposed by our principals no warranties or representations are made as to the condition of the property or any hazards contained therein or any to be implied.

801 W. Riverside Avenue, Suite 300
Spokane, WA 99201
509 623 1000 tel
naiblack.com

For Lease
Office

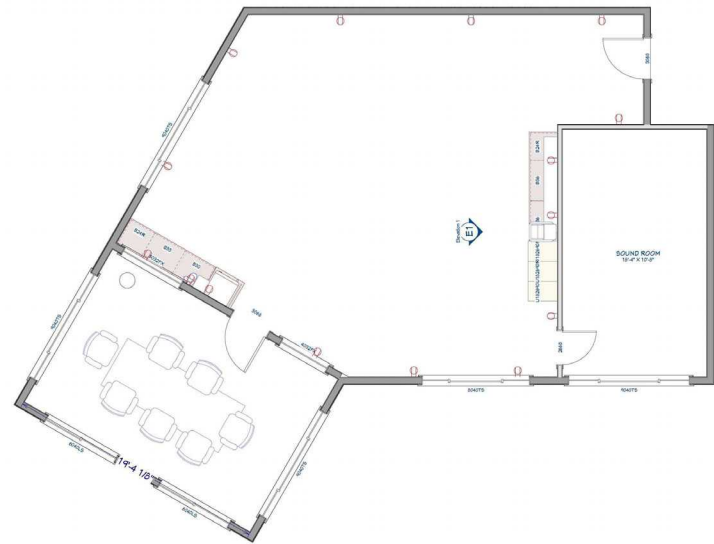
NAIBlack



Ste. 2C



Ste. 2C



Ste. 2C

No warranty or representation, expression or implied, is made as to the accuracy of the information contained herein, and the same is submitted subject to errors, omissions, change or price, rental or other conditions, prior to sale, lease, financing, or withdrawal without notice, and of special listing conditions imposed by our principals no warranties or representations are made as to the condition of the property or any hazards contained therein or any to be implied.

801 W. Riverside Avenue, Suite 300
Spokane, WA 99201
509 623 1000 tel
naiblack.com

For Lease
Office

NAIBlack



No warranty or representation, expression or implied, is made as to the accuracy of the information contained herein, and the same is submitted subject to errors, omissions, change or price, rental or other conditions, prior to sale, lease, financing, or withdrawal without notice, and of special listing conditions imposed by our principals no warranties or representations are made as to the condition of the property or any hazards contained therein or any to be implied.

801 W. Riverside Avenue, Suite 300
Spokane, WA 99201
509 623 1000 tel
naiblack.com



Population	1 Mile	3 Miles	5 Miles
Total Population	18,585	122,420	227,993
Average Age	39	39	40
Average Age (Male)	38	38	39
Average Age (Female)	39	40	40

Households & Income	1 Mile	3 Miles	5 Miles
Total Households	7,612	51,621	94,223
# of Persons per HH	2.39	2.24	2.33
Average HH Income	\$73,415	\$76,522	\$87,702
Average House Value	\$390,940	\$383,061	\$409,342

Demographics data derived from Esri forecast for 2024

