

# For Lease

18715 Pacific Ave South, Spanaway, WA 98387

*Prime retail location with great visibility on Pacific Ave E with various uses in pet health and care.*

## PROPERTY HIGHLIGHTS

- + Currently Set Up As a Veterinary Clinic
- + Large Reception Area
- + 5 Exam Rooms
- + 1 X-Ray Room
- + 2 Kennel Rooms
- + 2 Storage Rooms
- + 2,000 +/- SF Fenced Yard Area
- + Great Visibility on Pacific Ave S
- + Large Pylon Sign Facing Pacific Ave S
- + **Available Immediately**
- + **\$6,000 per month + NNN**

### JOHN PAVOLKA

Associate  
+1 253 203 1327  
jpavolka@nai-psp.com

### AARON ROSEN

Senior Vice President  
+1 253 203 1319  
arosen@nai-psp.com



THE INFORMATION CONTAINED HEREIN HAS BEEN GIVEN TO US BY THE OWNER OF THE PROPERTY OR OTHER SOURCES WE DEEM RELIABLE. WE HAVE NO REASON TO DOUBT ITS ACCURACY, BUT WE DO NOT GUARANTEE IT. ALL INFORMATION SHOULD BE VERIFIED PRIOR TO PURCHASE OR LEASE.

FIRST FLOOR OFFICE SF

**3,242 SF**

APARTMENT SF

**800 SF**

PARKING

**25 stalls**

ZONING

**UCOR**

[nai-psp.com](http://nai-psp.com)

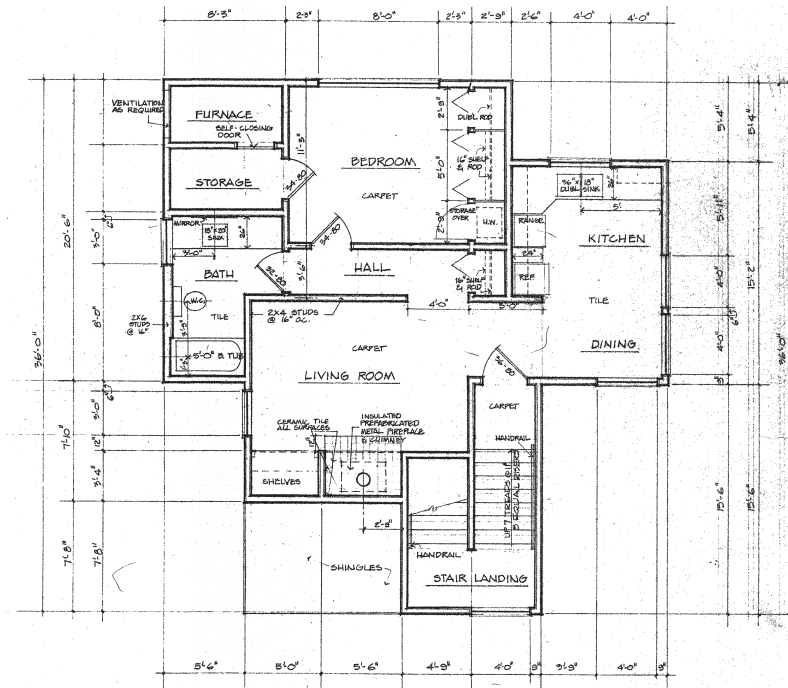
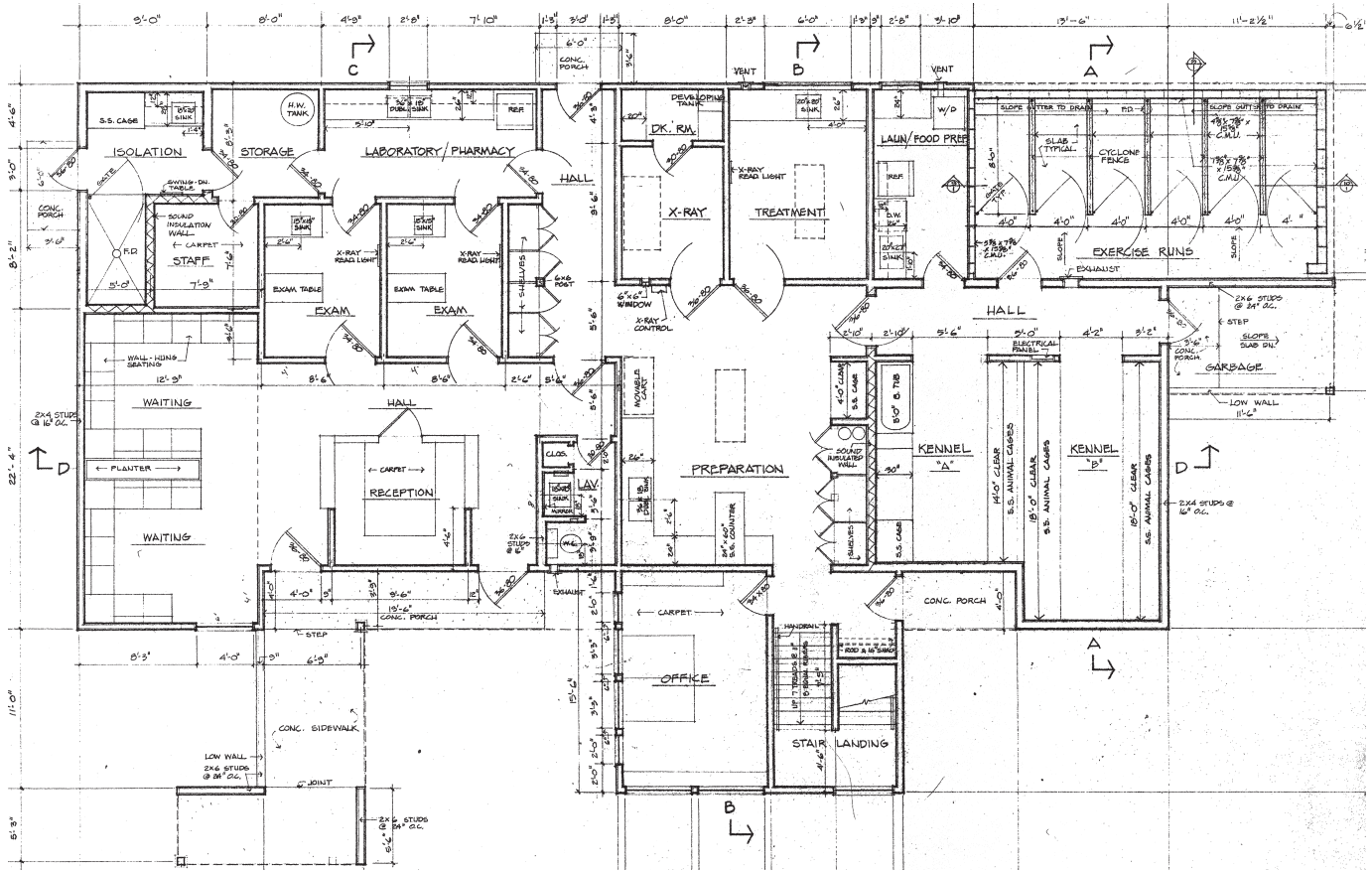


**JOHN PAVOLKA**  
Associate  
+1 253 203 1327  
jpavolka@nai-psp.com

**AARON ROSEN**  
Senior Vice President  
+1 253 203 1319  
arosen@nai-psp.com



# Floor Plans



**JOHN PAVOLKA**  
 Associate  
 +1 253 203 1327  
 jpavolka@nai-psp.com

**AARON ROSEN**  
 Senior Vice President  
 +1 253 203 1319  
 arosen@nai-psp.com

