

SODO Park

3200 - 3220 1st Avenue South | Seattle, WA

2,200 SF RETAIL/OFFICE FOR LEASE

Available Space

 THE ANDOVER
COMPANY, INC.
CORFAC INTERNATIONAL

JACK CRANE
(206) 446-6699
jacklc@andoverco.com

JEFF CRANE
(206) 336-5336
jcrane@andoverco.com



PROPERTY HIGHLIGHTS



TOTAL SIZE OF 2,200 SF



AVAILABLE 4/1/2025 OR SOONER
ON 45 DAYS' NOTICE



GREAT SODO LOCATION WITH
QUICK ACCESS TO I-5 & I-90



1ST FLOOR RETAIL/OFFICE SPACE
WITH EXPOSURE ON 1ST AVE



WITHIN MINUTES TO NEARBY
BUSINESSES, BANKING, RESTAURANTS,
AND OTHER RETAIL SERVICES

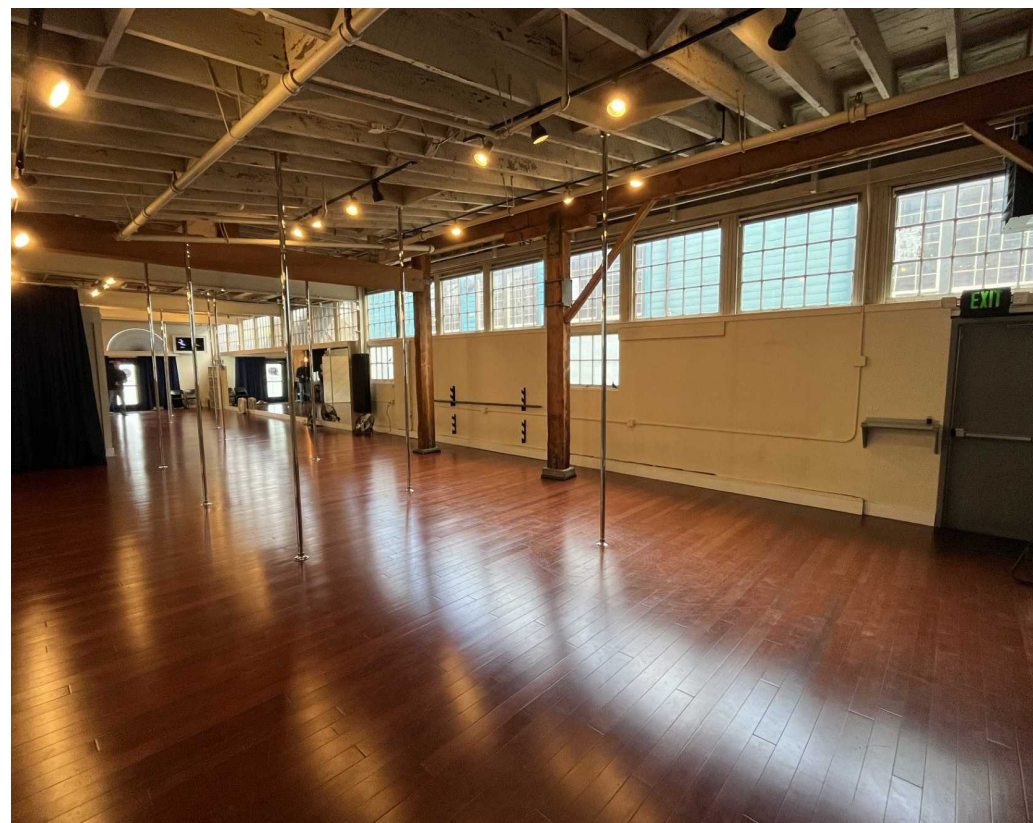
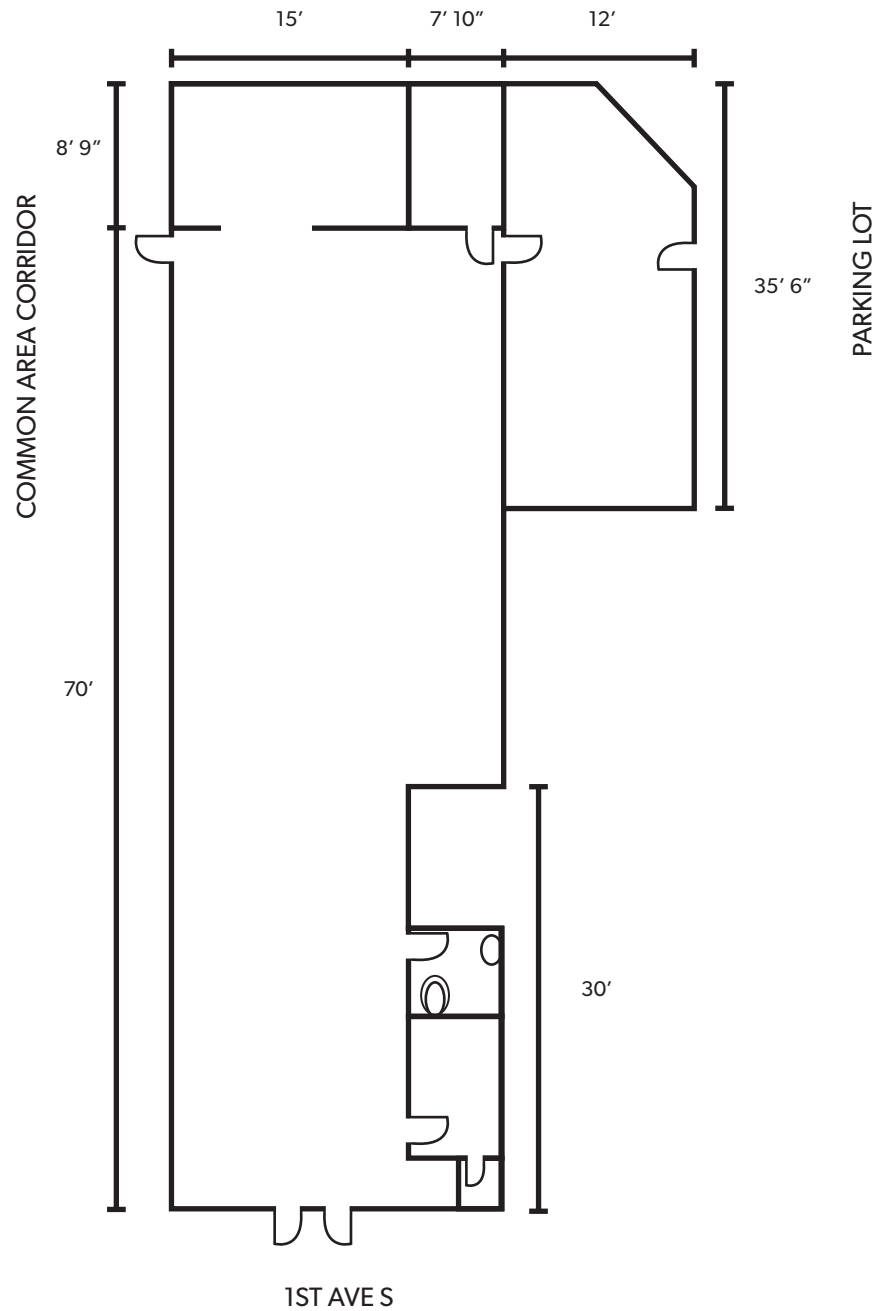


CALL BROKERS FOR RATES

The information contained herein has been obtained from reliable sources, but is not guaranteed. A prospective buyer/tenant should verify each item relating to this property and all information contained herein.

SODO Park

3200 - 3220 1st Avenue South | Seattle, WA

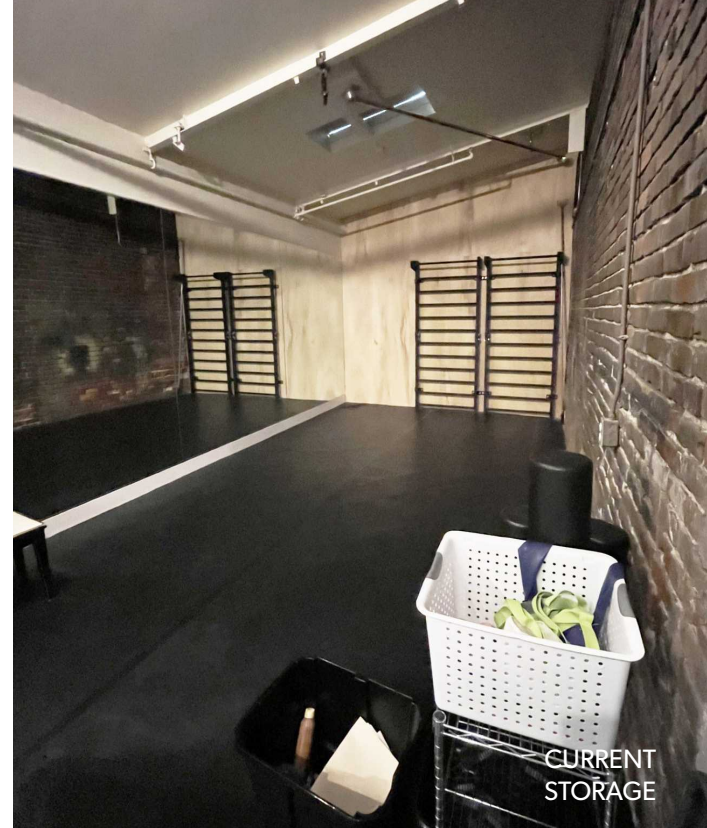




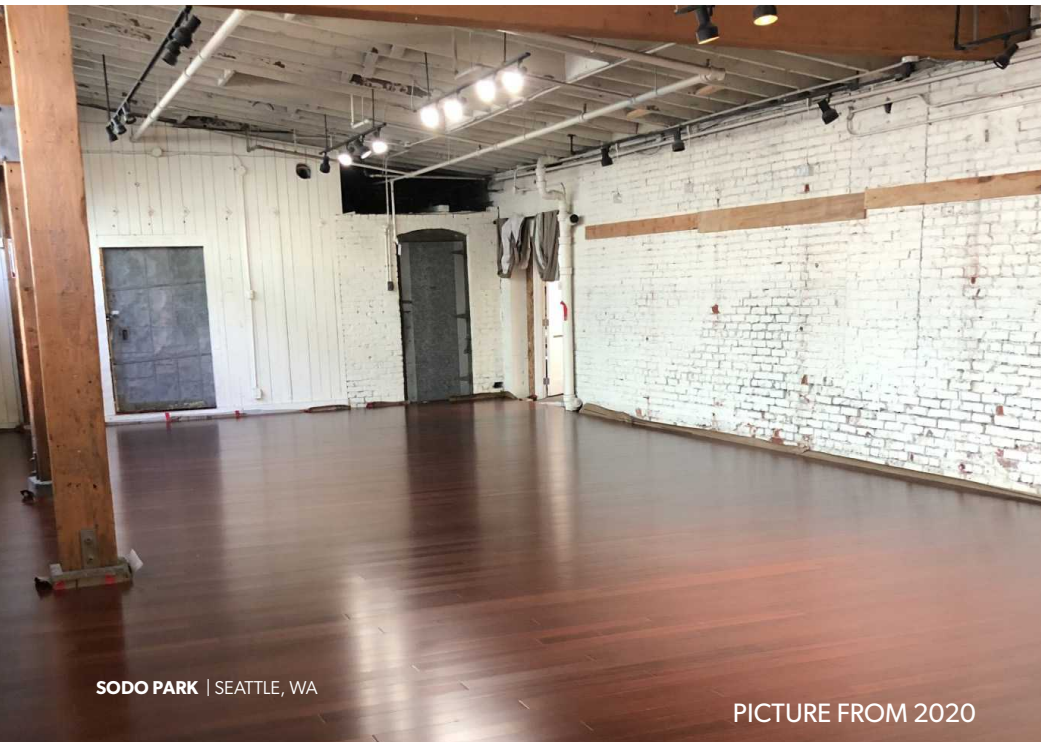
CURRENT



CURRENT

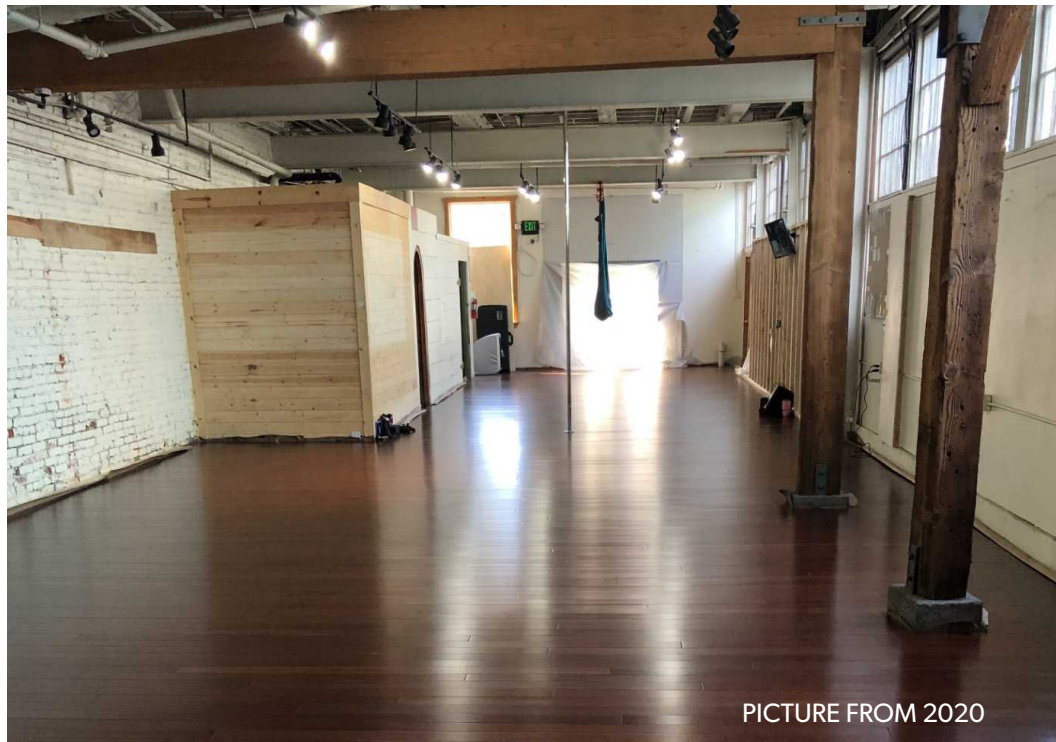


CURRENT STORAGE



SODO PARK | SEATTLE, WA

PICTURE FROM 2020



PICTURE FROM 2020



DOWNTOWN SEATTLE

T-MOBILE PARK

WESTLAND
DISTILLERY

GHOSTFISH
BREWING COMPANY

Silver Platters
CLASSIC MARKET • 2018

BLUE WATER
TACO GRILL

Property

1ST AVES

OCcidental AVES

SODO Park

3200 - 3220 1st Avenue South | Seattle, WA

DRIVE TIMES

DOWNTOWN SEATTLE 2.5 MILES

SEATAC AIRPORT 11.5 MILES

SODO PARK

3200

SODO Park

3200 - 3220 1st Avenue South | Seattle, WA

JACK CRANE

(206) 446-6699

jacklc@andoverco.com

JEFF CRANE

(206) 336-5336

jcrane@andoverco.com

