



BEL-SPRING 520

11808 + 11820 NORTHUP WAY, BELLEVUE

NEWMARK

JOE LYNCH

Executive Managing Director
425.362.1399
joe.lynch@nmrk.com

DAN HARDEN

Senior Managing Director
425.362.1393
dan.harden@nmrk.com

PROPERTY INFORMATION

Bel-Spring 520 is a premier office campus, spanning $\pm 93,250$ square feet across two architecturally designed buildings, set on a 5-acre site. This property offers an abundance of parking with a generous ratio of 3.5 spaces per 1,000 square feet leased, including 0.8 covered spaces per 1,000 square feet.

Inside, the newly renovated atrium lobbies create a grand and welcoming atmosphere for both clients and employees. The convenience of an on-site Avanti Market, coffee service, new gym facilities with showers and lockers, and secured bike storage ensure your employees have all the amenities they need.

Enhance your business operations with access to a state-of-the-art conference center, perfect for hosting meetings and events without leaving the campus. Outdoor seating areas provide a serene environment to relax and recharge, while secured storage spaces offer additional convenience and security.

Located within walking distance to the future Spring District Light Rail Station, our office campus not only offers premium amenities but also exceptional accessibility, making it an ideal choice for businesses looking to thrive in a dynamic and connected environment.

11808 + 11820 NORTHUP WAY, BELLEVUE





West Building
11808 NORTHUP WAY

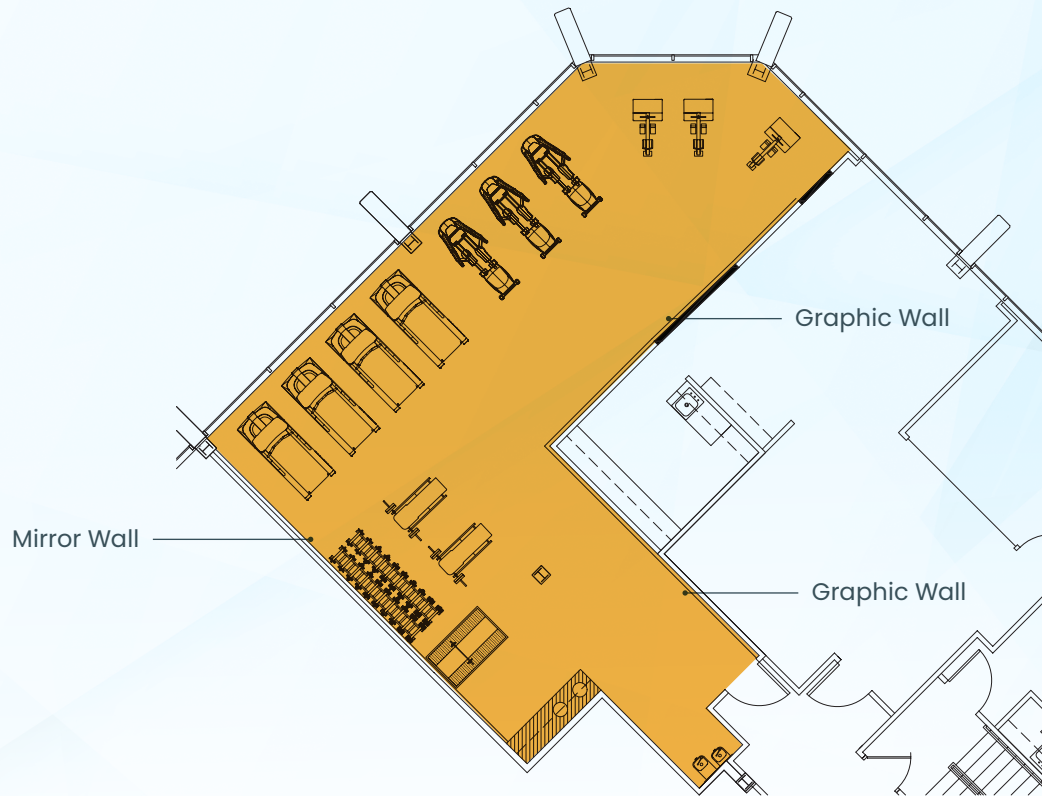
East Building
11820 NORTHUP WAY

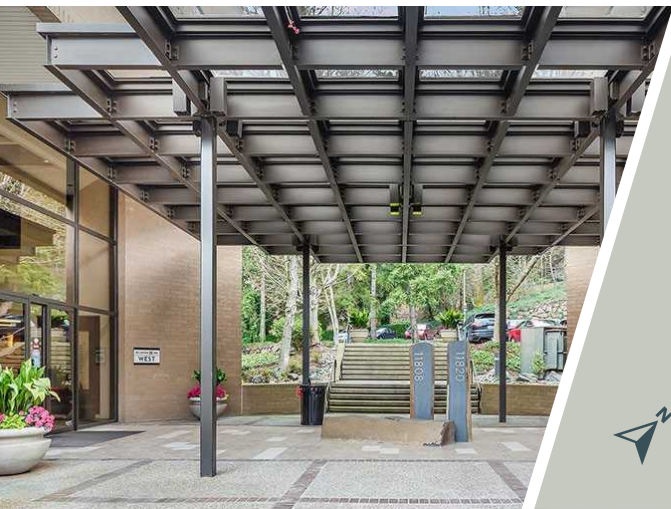


FITNESS CENTER

Coming early 2025

Space Plan





SITE PLAN



AVAILABLE SPACE

BUILDING	SUITE	SIZE	AVAILABLE
West	100	2,295 SF	Now
West	120	961 RSF	Now
West	130	1,214 SF	Now
West	240	10,259 SF	December 1, 2024
West	300	16,296 SF	Now
East	101	2,267 RSF	Now
East	108	2,140 RSF	January 1, 2025
East	205	2,127 RSF	Now
East	310	2,500 SF	Now
East	320	4,785 SF	Now

WEST BUILDING

Suite 100 | 2,295 SF | Available Now

Suite 120 | 961 RSF | Available Now

Suite 130 | 1,214 SF | Available Now



WEST BUILDING

Suite 240 | 10,259 SF | Available December 1, 2024

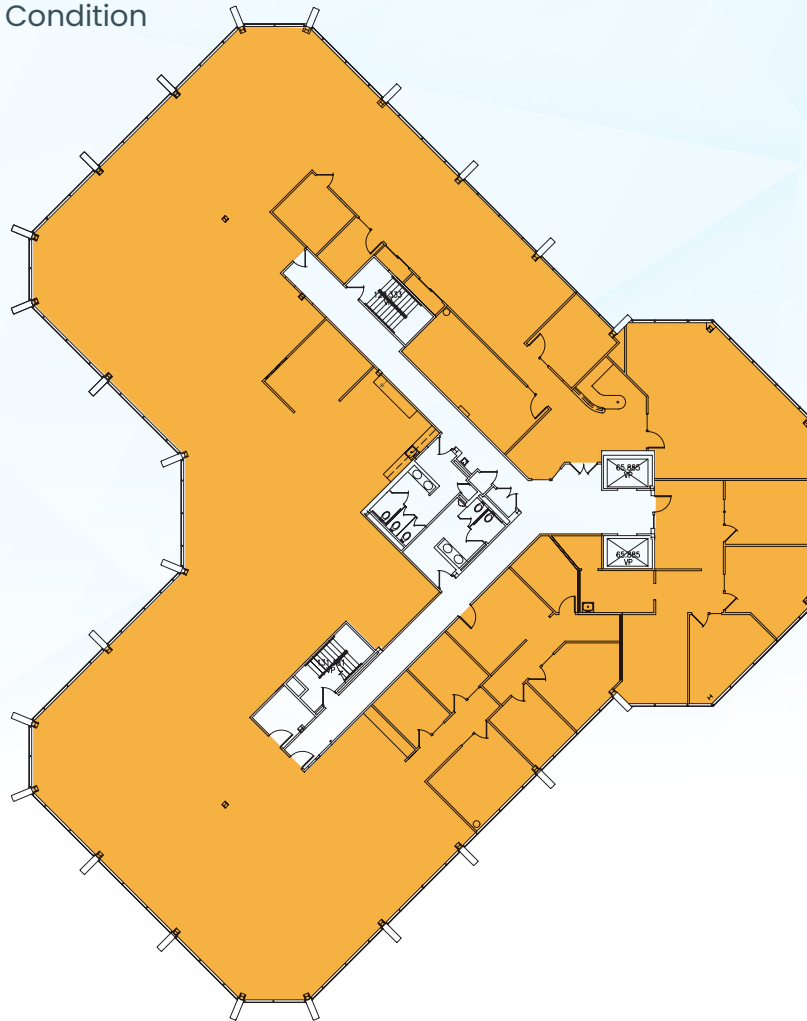
Existing Condition



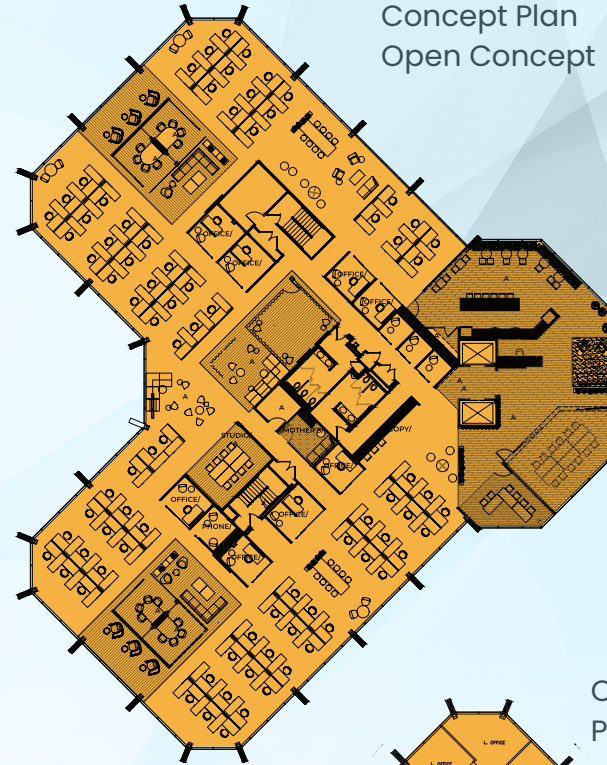
WEST BUILDING

Suite 300 | 16,296 SF | Available Now

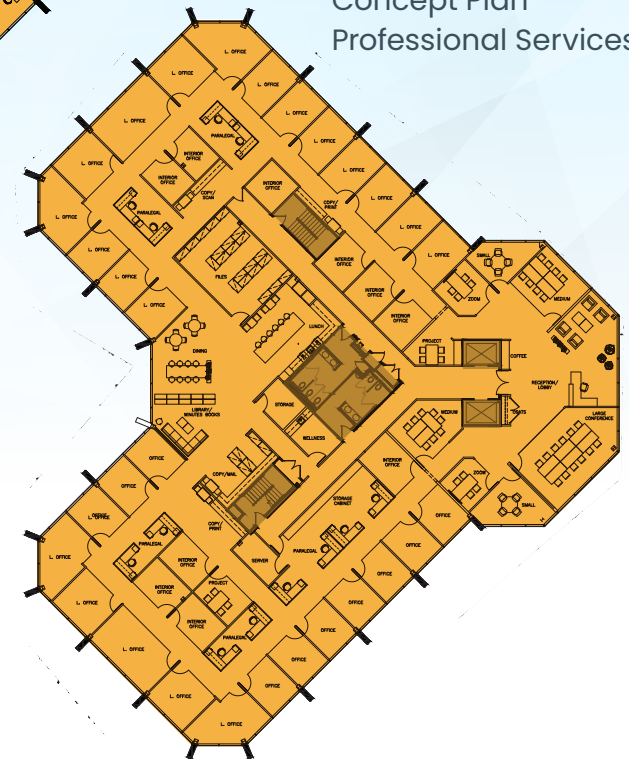
Existing Condition



Concept Plan
Open Concept



Concept Plan
Professional Services



EAST BUILDING

Suite 101 | 2,267 RSF | Available Now

Suite 108 | 2,140 RSF | Available January 1, 2025

Existing Condition



EAST BUILDING

Suite 205 | 2,127 RSF | Available Now

Existing Condition



EAST BUILDING

Suite 310 | 2,500 SF | Available Now

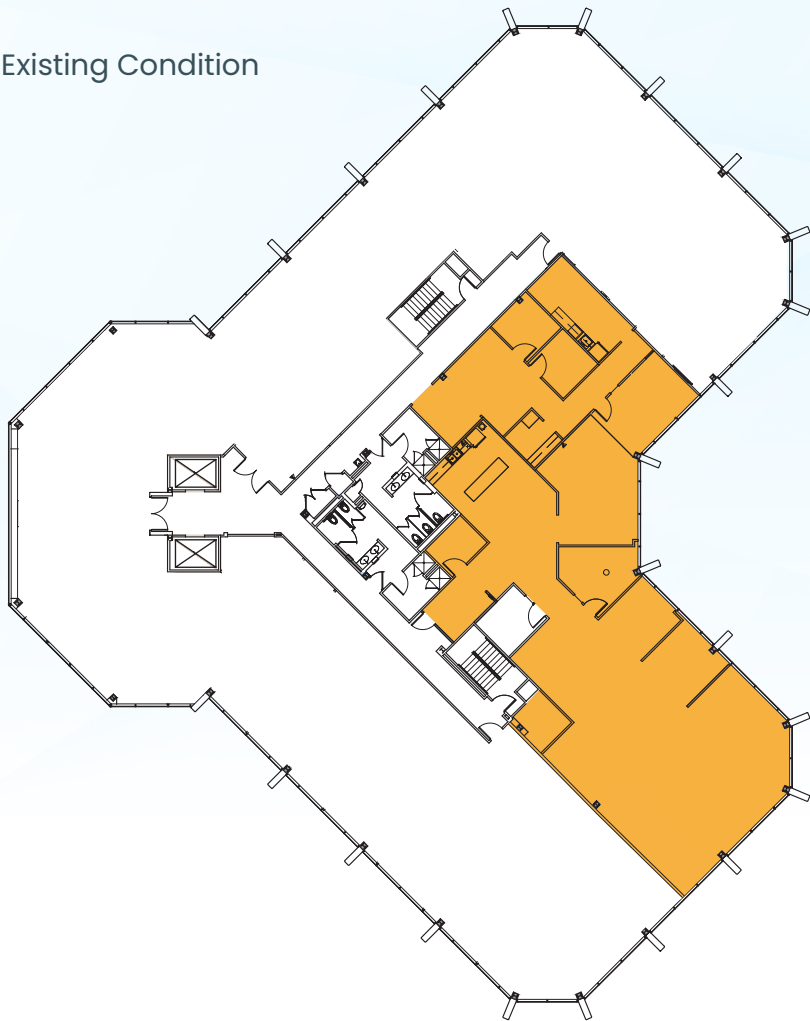
Existing Condition



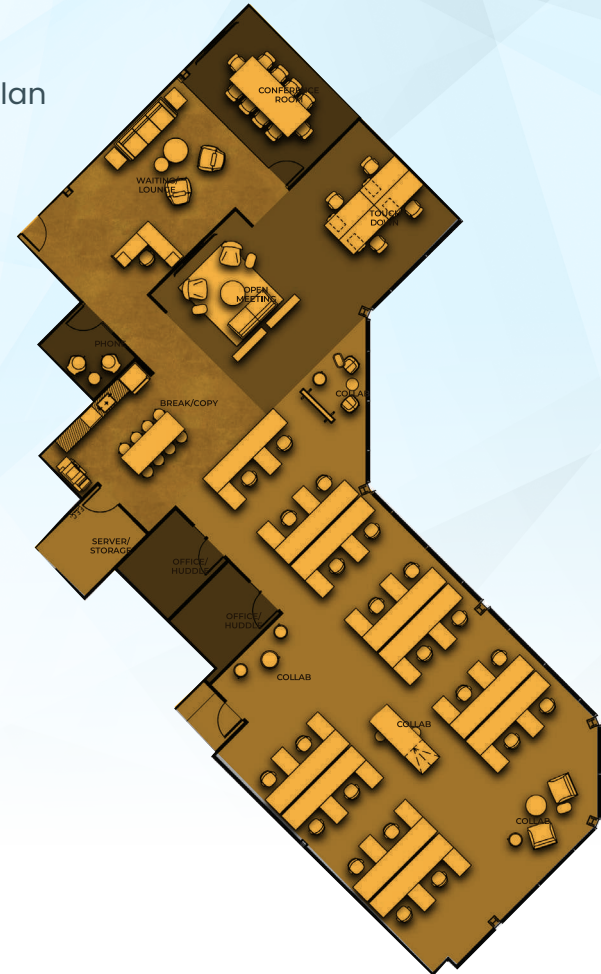
EAST BUILDING

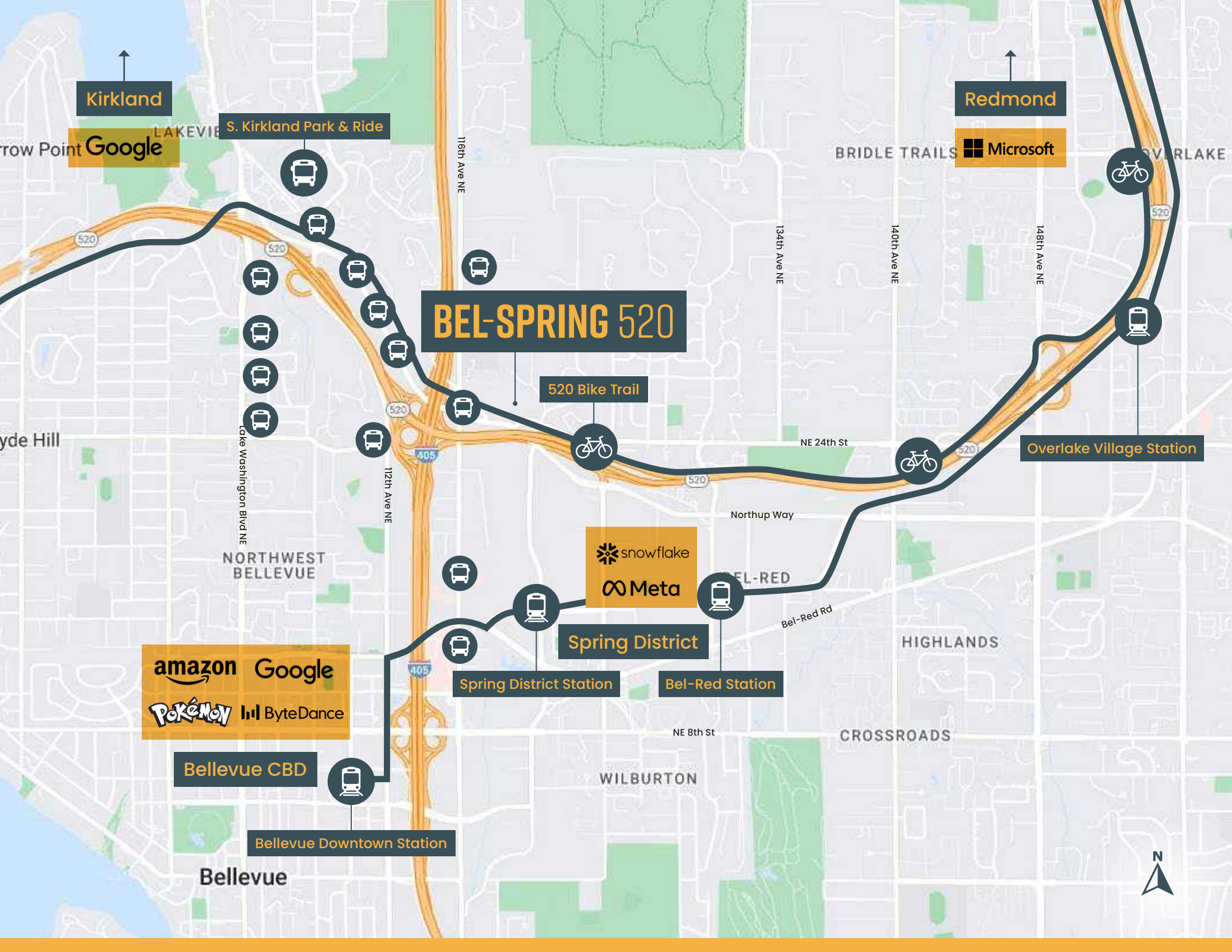
Suite 320 | 4,785 SF *Divisible | Available Now

Existing Condition



Conceptual Plan





Kirkland

Redmond

Google

S. Kirkland Park & Ride

Microsoft

BEL-SPRING 520

520 Bike Trail

Overlake Village Station

amazon Google
Pokéon ByteDance

snowflake
Meta

Spring District Station

Bel-Red Station

Bellevue CBD

Bellevue Downtown Station

Bellevue



BEL-SPRING 520

11808 + 11820 NORTHUP WAY, BELLEVUE

JOE LYNCH

Executive Managing Director
425.362.1399
joe.lynch@nrmk.com

DAN HARDEN

Senior Managing Director
425.362.1393
dan.harden@nrmk.com

NEWMARK

The distributor of this communication is performing acts for which a real estate license is required. The information contained herein has been obtained from sources deemed reliable but has not been verified and no guarantee, warranty or representation, either express or implied, is made with respect to such information. Terms of sale or lease and availability are subject to change or withdrawal without notice. MP-23-479