

# NORTH CREEK OFFICE CENTER

FOR LEASE

19515 North Creek Parkway North, Bothell

FOR LEASING INFORMATION CONTACT:

**GABE SMITH**  
[gabe.smith@jll.com](mailto:gabe.smith@jll.com)  
+1 425 974 4029

**BRENT JACKSON**  
[brent.jackson@jll.com](mailto:brent.jackson@jll.com)  
+1 425 974 4015

**ALEC GOODWIN**  
[alec.goodwin@jll.com](mailto:alec.goodwin@jll.com)  
+1 424 421 9245



# NORTH CREEK OFFICE CENTER



## BUILDING FEATURES:

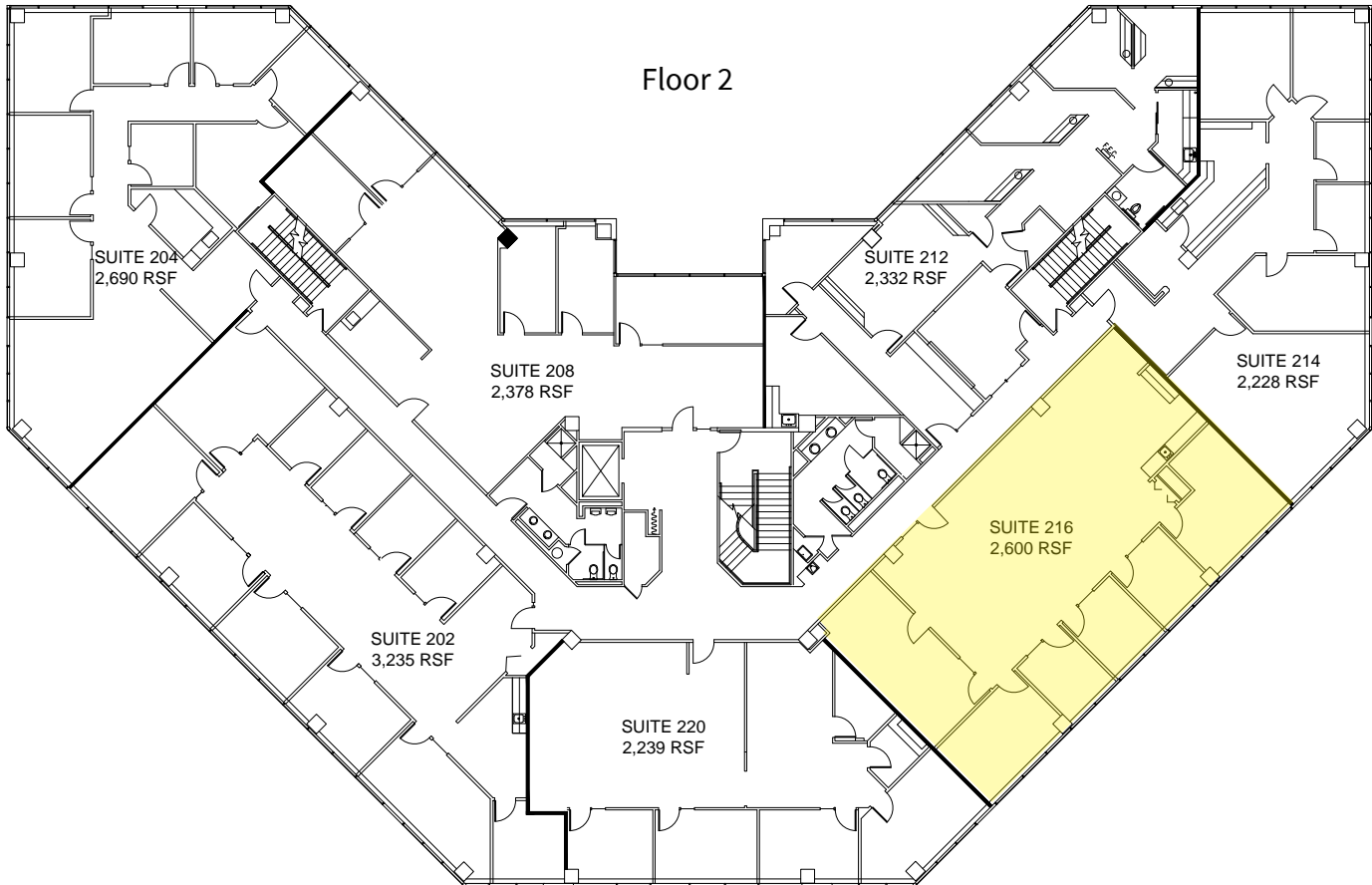
- » Class A 38,512 SF office building with newly renovated lobby
- » 3-story brick and steel construction
- » Premier location on a high visibility corner at the entrance to North Creek
- » Immediate access to I-405 and Metro bus services
- » Near restaurants, retail, childcare, and hotel accommodations
- » Located in a park-like campus setting surrounded by picturesque jogging trails
- » 3.5/1,000 overall parking ratio with reserved parking in garage area at market rates

## SPACE AVAILABLE:

FLOOR	SUITE	RSF	AVAILABILITY	COMMENTS
2	216	2,600 (divisible to 1,515 and 1,085 RSF)	Now	2,600 RSF available now. Offers 5 private offices, large conference room, open space; Demised space available April 2025
3	306	1,935	Now	2 offices, 1 large conference room/office, kitchenette, open office



# NORTH CREEK OFFICE CENTER



## Suite 216 Demisable Options



# NORTH CREEK OFFICE CENTER

Floor 3





# NORTH CREEK OFFICE CENTER

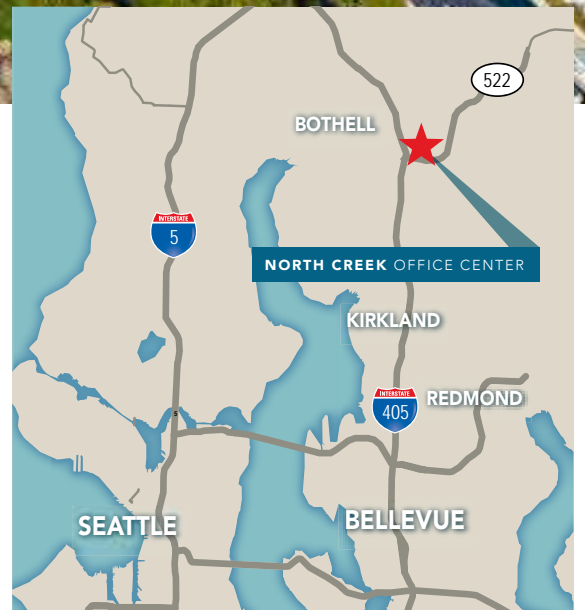
RETAIL AMENITIES

NORTH CREEK PARKWAY

COUNTRY INN AND SUITES



← TO EVERETT  
TO BELLEVUE →



**GABE SMITH**  
[gabe.smith@jll.com](mailto:gabe.smith@jll.com)  
+1 425 974 4029

**BRENT JACKSON**  
[brent.jackson@jll.com](mailto:brent.jackson@jll.com)  
+1 425 974 4015

**ALEC GOODWIN**  
[alec.goodwin@jll.com](mailto:alec.goodwin@jll.com)  
+1 424 421 9245