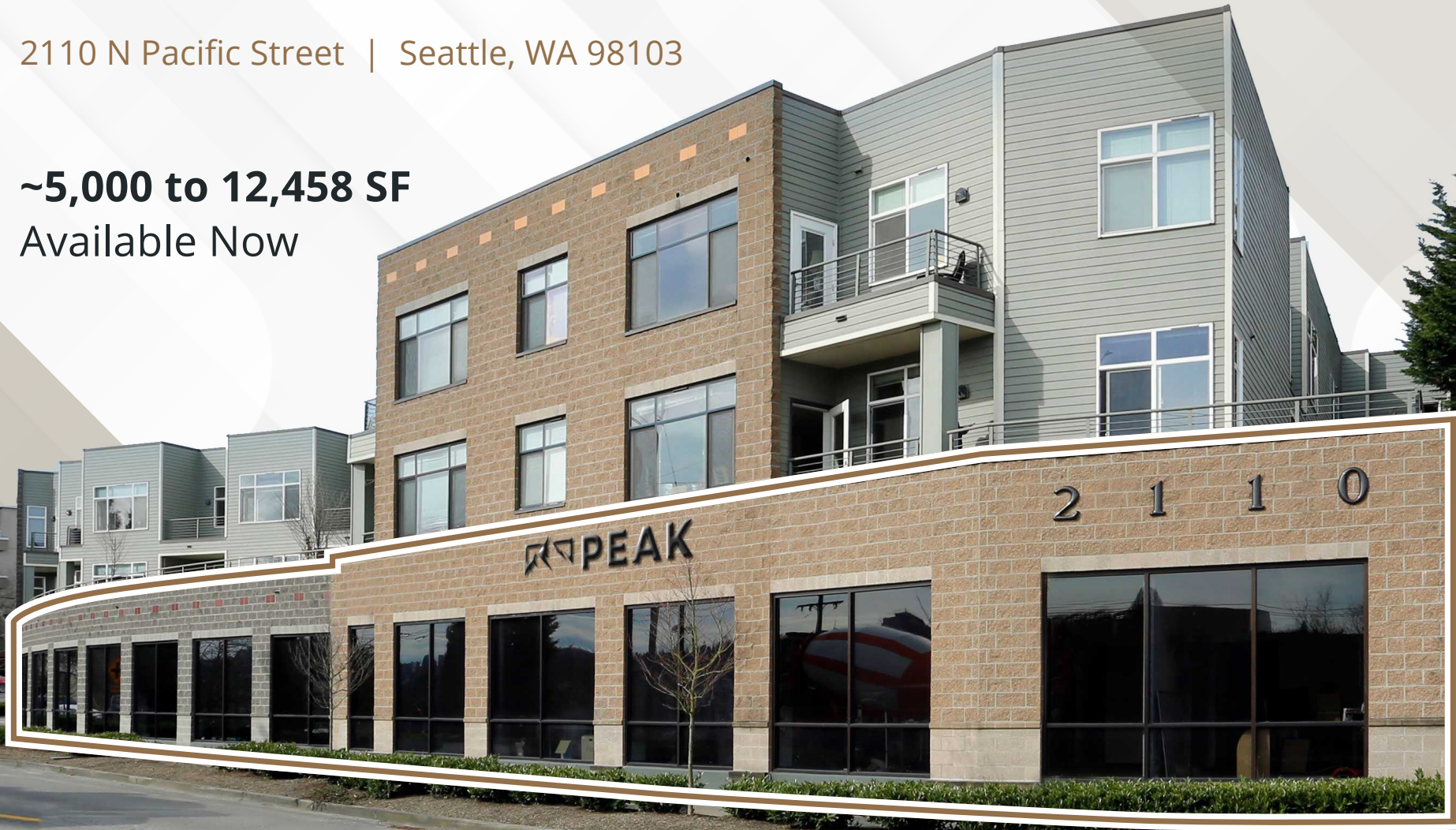


Fremont Pacific Pointe

2110 N Pacific Street | Seattle, WA 98103

~5,000 to 12,458 SF
Available Now



COLLIERS SEATTLE
601 Union Street, Suite 5300
Seattle, WA 98101
colliers.com

JOE CONNER
Senior Associate
+1 425 698 7142
joe.conner@colliers.com

CONNOR McCLAIN
Senior Vice President
+1 206 624 7417
connor.mcclain@colliers.com

Fremont Pacific Pointe

2110 N Pacific Street | Seattle, WA 98103



Asking Rate:
\$22.00/SF, Full Service



20 Parking Stalls in a
Secured Garage



Large Floor to Ceiling
Glass Windows



High Ceilings



Office/Flex/Retail/
Medical Space



Access to Gas
Works Park



Access to Retail



Right on Burke
Gilman Running/
Biking Trail

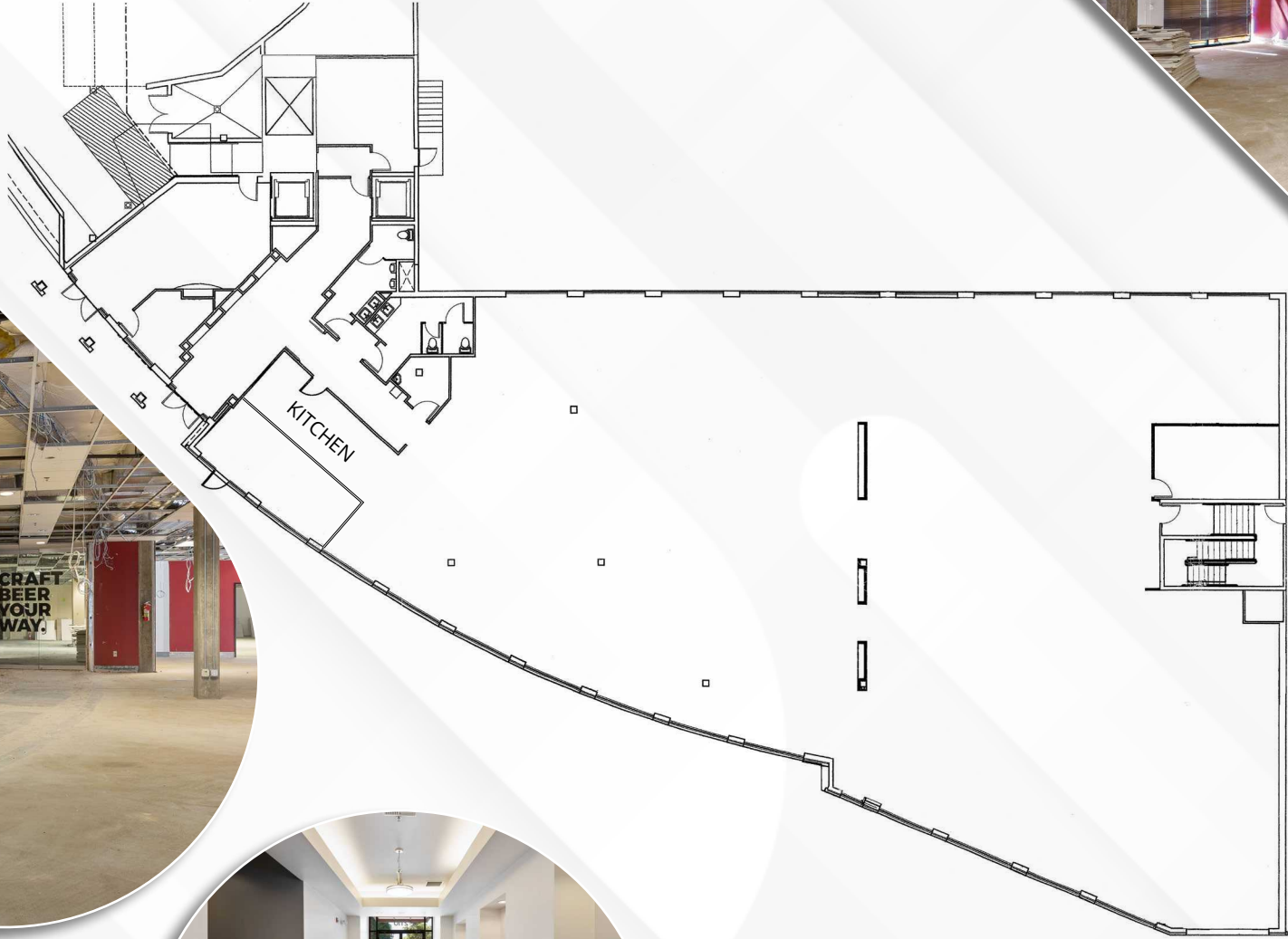


Exterior Signage
Available



Fremont Pacific Pointe

2110 N Pacific Street | Seattle, WA 98103



Fremont Pacific Pointe

2110 N Pacific Street | Seattle, WA 98103

Just a few miles from Seattle's downtown core, Fremont is a classic "streetcar suburb." Home to Brooks Sports' corporate headquarters, as well as the Seattle presence for Adobe, Salesforce, and Google, the vibrant 45th Street corridor offers all the most desirable amenities. Pacific Pointe is exquisitely situated across the street from Gas Works Park and mere steps from the Burke-Gilman Trail, ideal for commuting or recreation. An incredible location to make your own, available now at well below market rates!



COLLIERS SEATTLE
601 Union Street, Suite 5300
Seattle, WA 98101
colliers.com

JOE CONNER
Senior Associate
+1 425 698 7142
joe.conner@colliers.com

CONNOR McCLAIN
Senior Vice President
+1 206 624 7417
connor.mcclain@colliers.com