

FOR LEASE

SEATTLE WATERFRONT RETAIL

CYRENE APARTMENTS

1306 Alaskan Way, Seattle, WA 98101

\$2,500 BROKER  
BONUS FOR  
LEASE SIGNED  
BY  
DECEMBER 31,  
2024

For more information please contact:

LAURA MILLER

[laura@gibraltarusa.com](mailto:laura@gibraltarusa.com)

206.351.3573

LEX PETRAS

[lexp@gibraltarusa.com](mailto:lexp@gibraltarusa.com)

206.618.8462



1306 ALASKAN WAY, SEATTLE, WA 98101

# CYRENE APARTMENTS



## PROPERTY HIGHLIGHTS

- Exciting opportunity to lease highly visible retail space along the new and improved Seattle Waterfront, fronting Alaskan Way
- Located at the base of Cyrene Apartments, a luxury community comprised of 169 residences
- 1,855 SF
- Ideal for cafe, restaurant (ability to install ventless type 1 hood), tap room, retail
- Parking available at market rate
- Directly across from Pier 57 and the Seattle Great Wheel, Argosy Cruise Terminal, Waterfront Park, and Seattle Aquarium
- Prime access to Pike Place Market, Waterfront Park, Seattle Art Museum, and plenty of exciting shopping and dining options within walking distance
- Building retail co-tenant is Waterfront Market & Deli
- Rental Rate \$28/SF/YR plus NNN (\$16.11/SF/YR) = \$6,819 per month



100

TRANSIT SCORE



98

WALK SCORE



68

BIKE SCORE



76,094

TOTAL POPULATION



45,396

TOTAL HOUSEHOLDS



\$96,370

MEDIAN INCOME

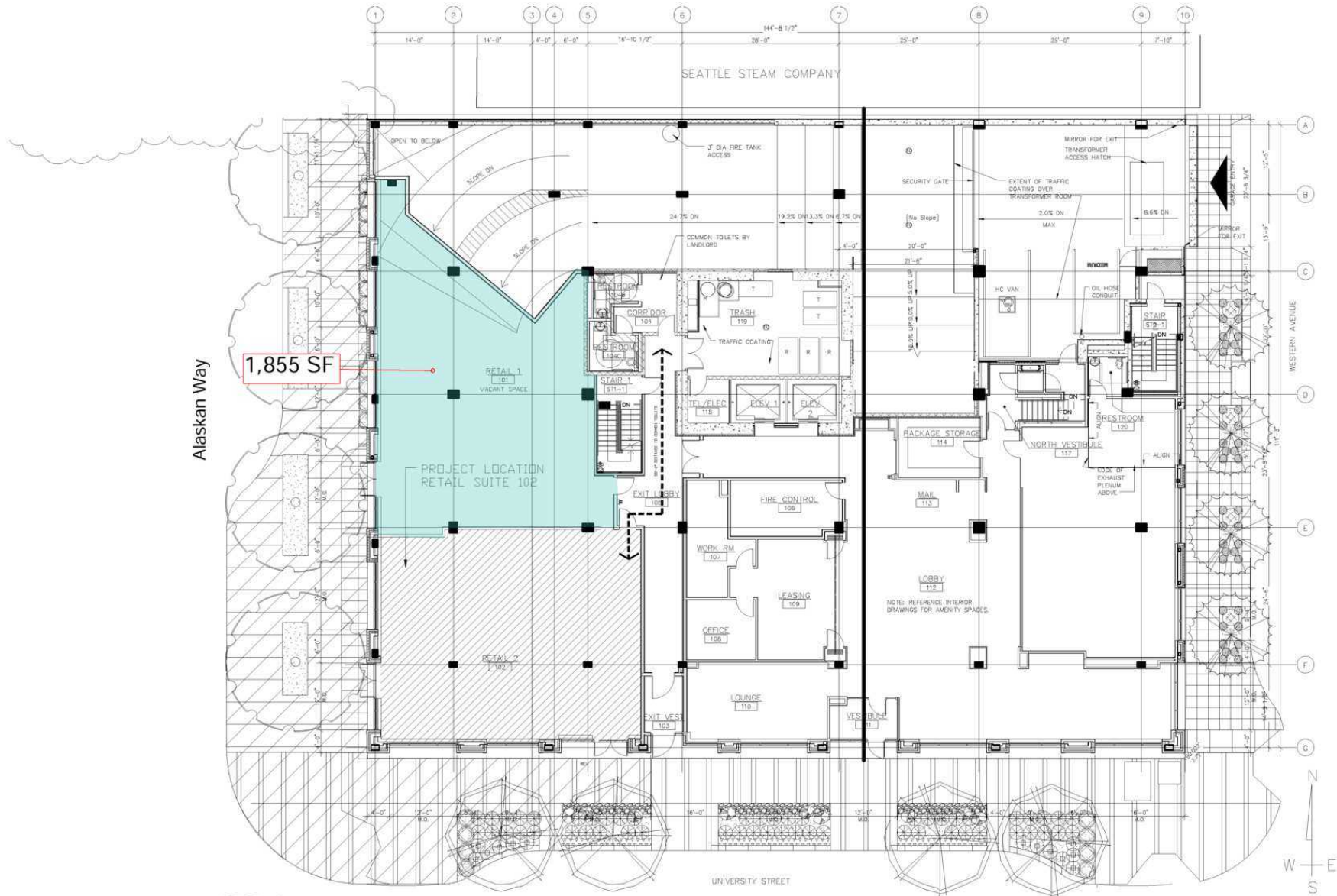
\* Estimated 2023 Demographics based on a 1 mile radius

1306 ALASKAN WAY, SEATTLE, WA 98101

# CYRENE APARTMENTS



# CYRENE APARTMENTS



Alaskan Way

1,855 SF

RETAIL 1  
101  
VACANT SPACE

PROJECT LOCATION  
RETAIL SUITE 102

RETAIL 2  
102

UNIVERSITY STREET

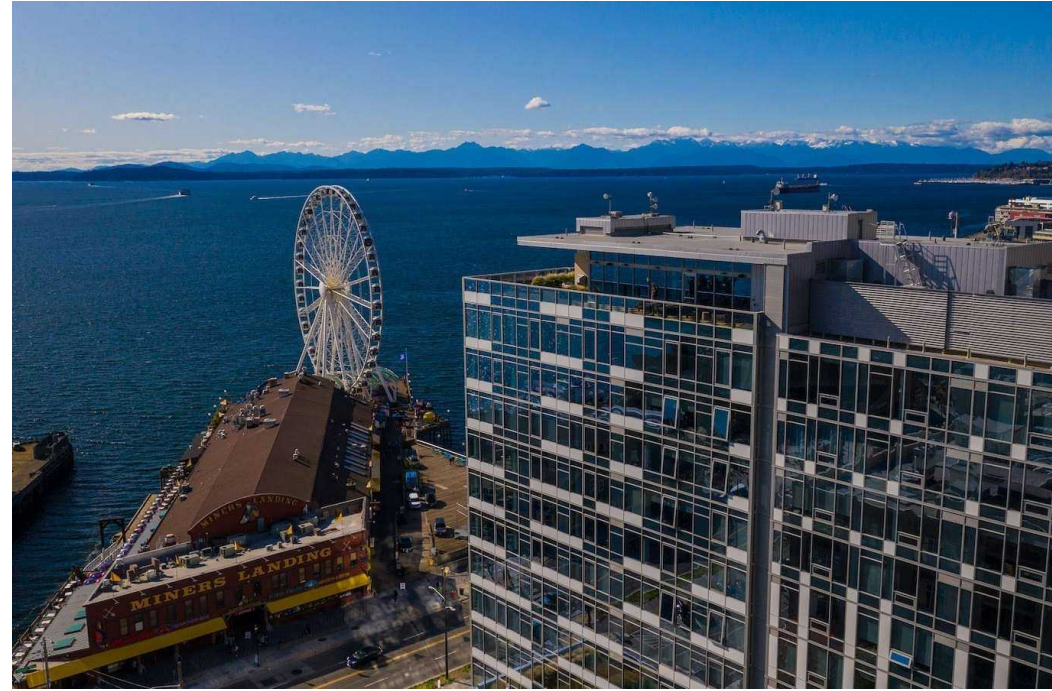
LEVEL 1  
A3.01 | 1/8" = 1'-0"

1306 ALASKAN WAY, SEATTLE, WA 98101

## CYRENE APARTMENTS

### SEATTLE WATERFRONT IMPROVEMENTS

- New park promenade and two-way bike path will run along the west side of Alaskan Way.
- Connections to park spaces, restaurants, stores, and neighborhoods
- Raised street crossings and widened sidewalks for pedestrians
- More than 500 new street trees, extensive ground covers and green stormwater infrastructure to manage stormwater runoff on-site
- Extensive pedestrian lighting in addition to roadway lighting



1306 ALASKAN WAY, SEATTLE, WA 98101

# CYRENE APARTMENTS

