

FOR SUBLEASE

# EAST CAMPUS CORPORATE PARK BUILDING VI

3455 S 344TH WAY, FEDERAL WAY, WA



KIDDER.COM

**km** Kidder  
Mathews



PROPERTY OVERVIEW

Master lease expires August, 30, 2030

Ground floor location with loading dock access

8 private offices, two conference rooms

Two break areas

Large open bull pen with work stations

Backup power generator

6,000 SF storage / flex, 6,334 SF turn-key office

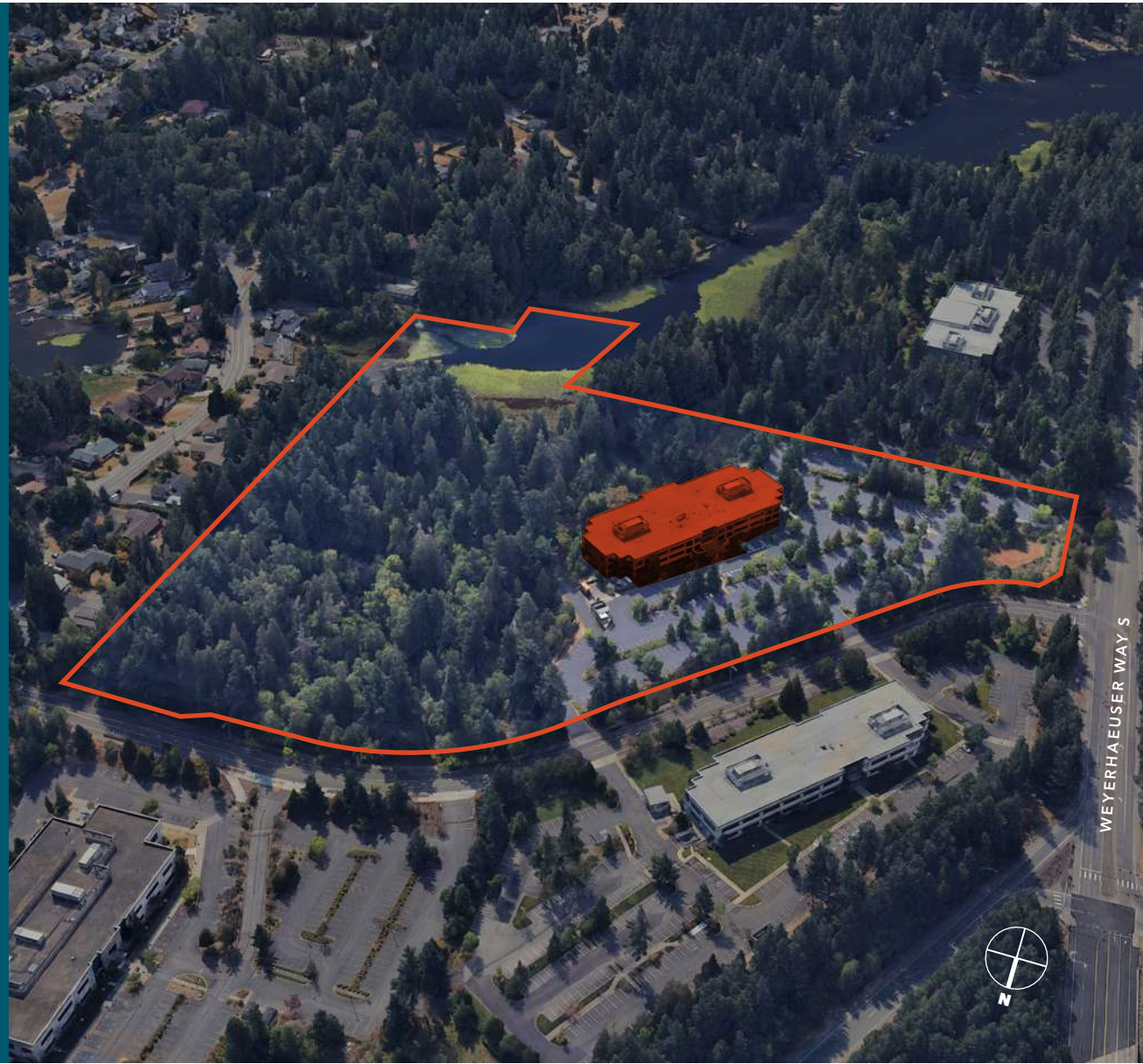
Furniture is included

New LED lighting

Abundant parking

*2 MIN*  
DRIVE TO HWY 18

*3 MIN*  
DRIVE TO I-5







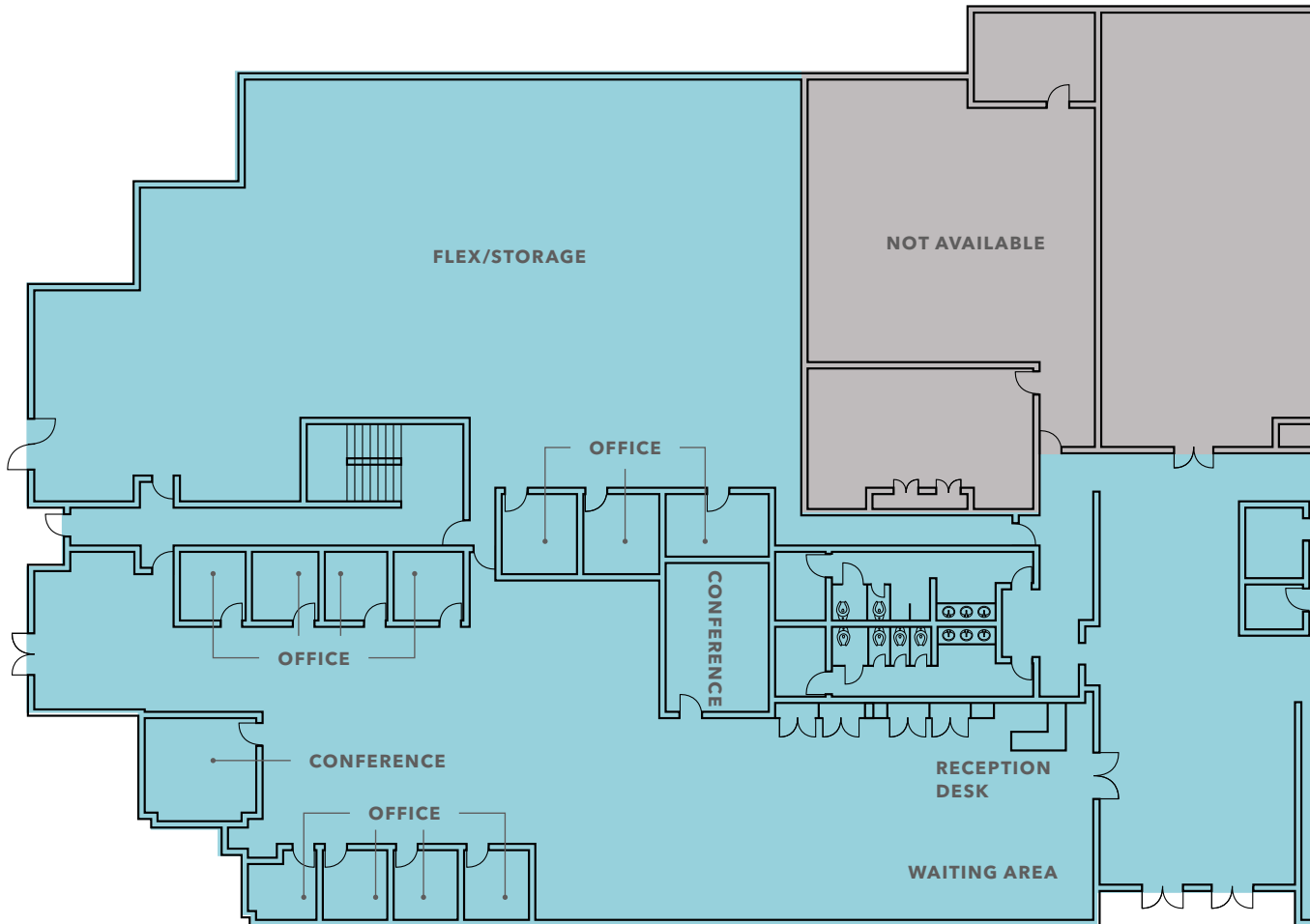
# SUITE 100 / 140

12,334

AVAILABLE SF

\$18.11

PSF + NNN (\$9.63)





EAST CAMPUS CORPORATE PARK | BUILDING VI





# EAST CAMPUS CORPORATE PARK | BUILDING VI



DIRECT ACCESS  
TO HWY 18 & I-5



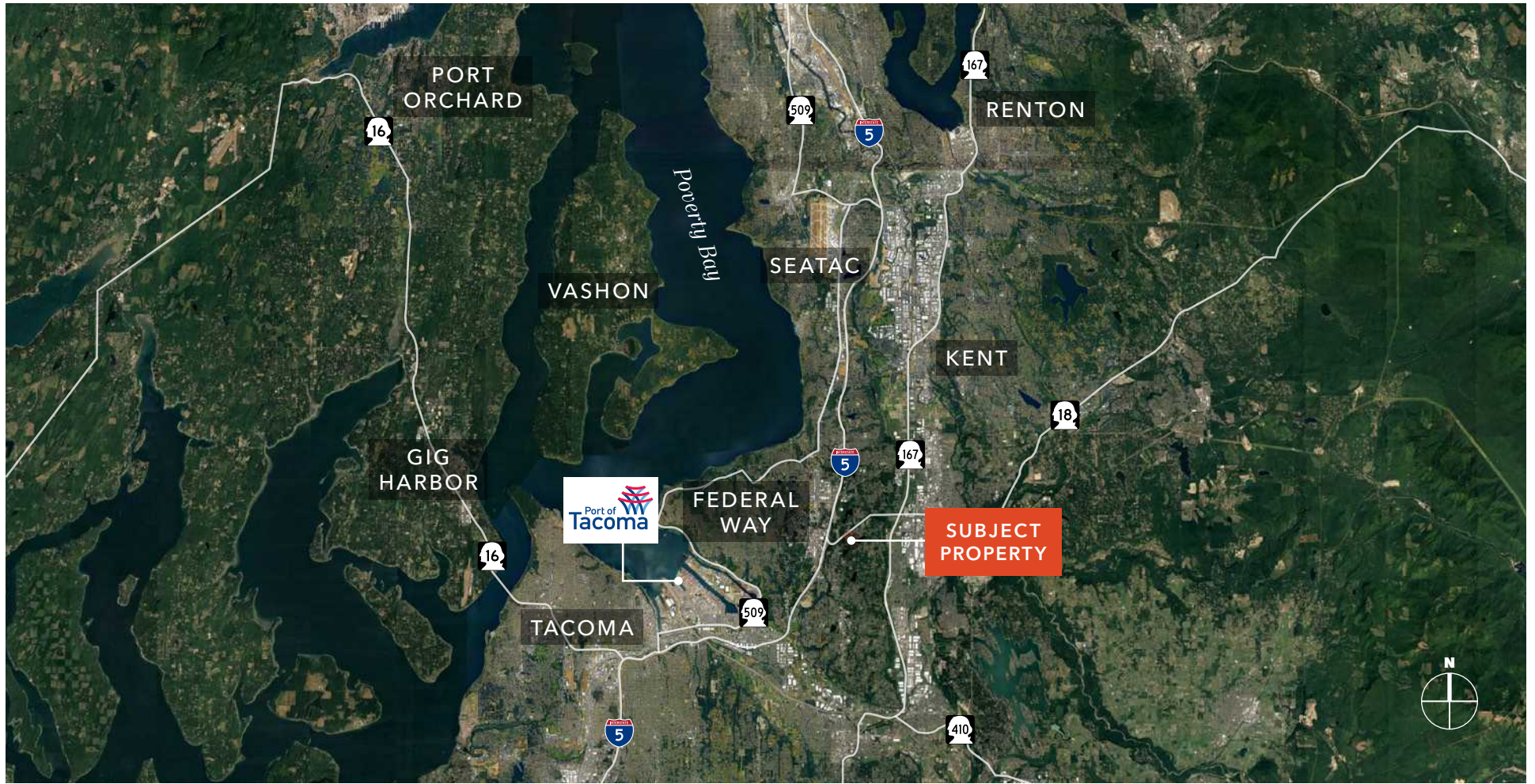
GROUND FLOOR  
ACCESS WITH  
LOADING DOCK



15 MIN DRIVE TO  
SEATAC AIRPORT



24/7 SECURITY





# EAST CAMPUS CORPORATE PARK | BUILDING VI







## EAST CAMPUS CORPORATE PARK | BUILDING VI

*For more information on  
this property, please contact*

**JOEL SHABEL**

Vice President

253.722.1406

[joel.shabel@kidder.com](mailto:joel.shabel@kidder.com)

[KIDDER.COM](http://KIDDER.COM)

This information supplied herein is from sources we deem reliable. It is provided without any representation, warranty, or guarantee, expressed or implied as to its accuracy. Prospective Buyer or Tenant should conduct an independent investigation and verification of all matters deemed to be material, including, but not limited to, statements of income and expenses. Consult your attorney, accountant, or other professional advisor. All Kidder Mathews designs are the sole property of Kidder Mathews. Branded materials and layouts are not authorized for use by any other firm or person.

