

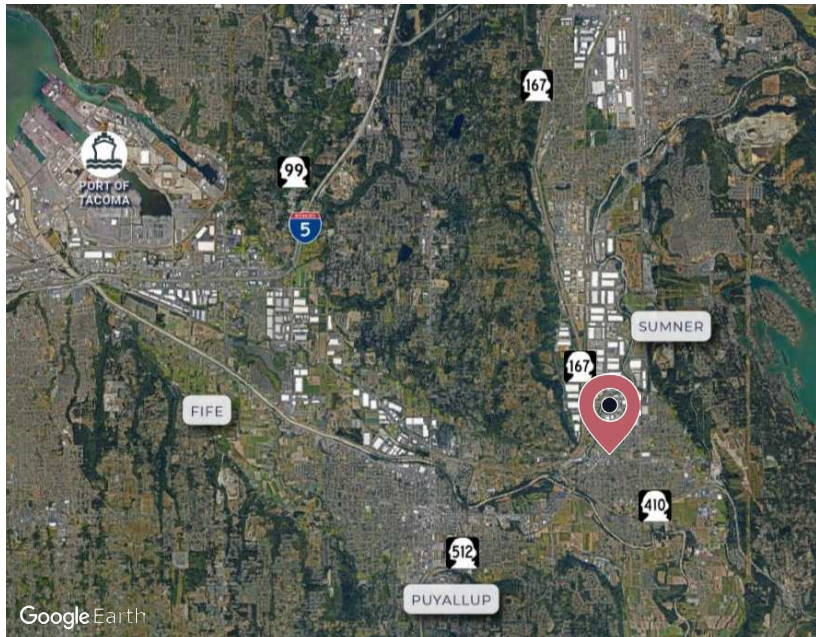
FOR LEASE

85,073 SF in Sumner

2005 Fryar Avenue, Sumner, WA 98390



- 2,013 SF Office
- 20,000 SF Excess yard
- 24' Clear height
- 15 Dock positions
- 2 Drive-in doors
- Fully fenced and secured
- Heavy power
- Heavy Industrial Zoning
- ESFR Sprinklered



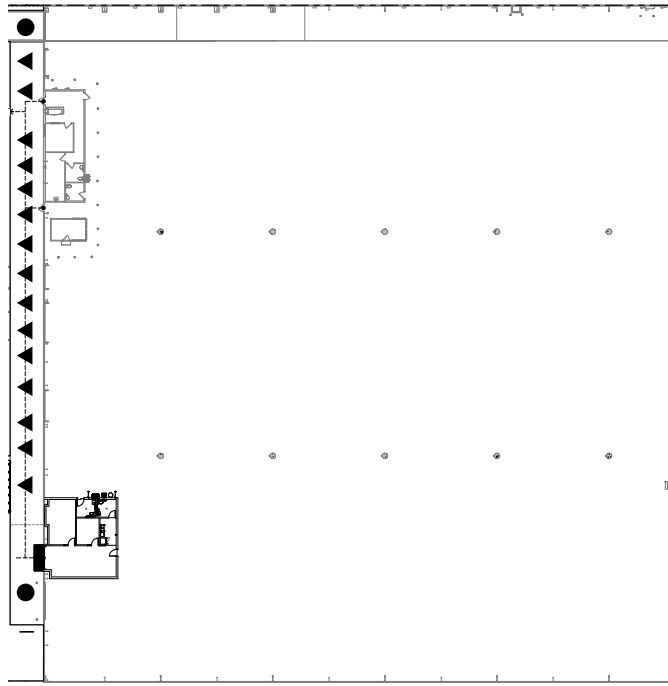
Michael Roy
+1 206 940 7199
michael.roy@kbcadvisors.com

Hans Vieser
+1 425 765 7926
hans.vieser@kbcadvisors.com

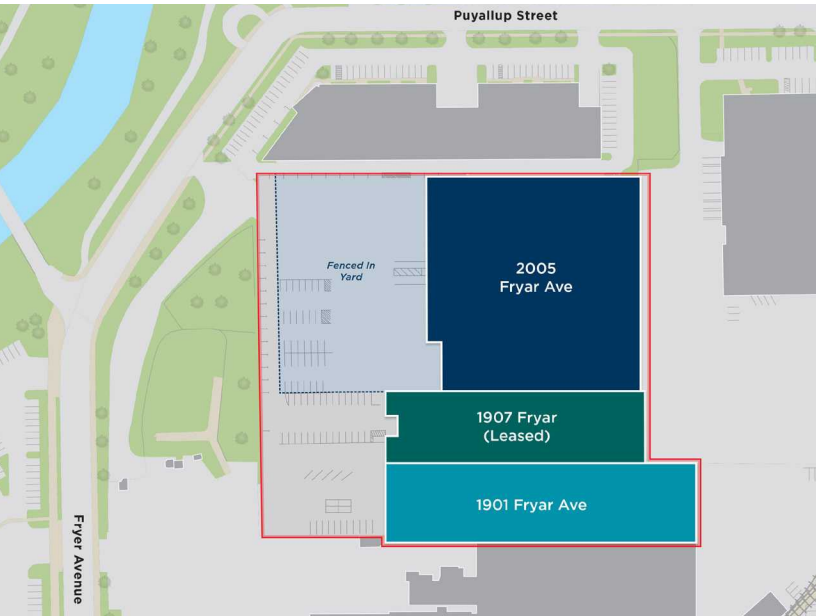
Brady Thomson
646 951 7219
bthomson@fortress.com

KBCADVISORS

Floor Plan



▲ ROLL-UP DOOR
● DRIVE-IN DOOR



85,073
Square Feet

2,013
SF Office

20,000
SF Excess Yard

15
Dock-high Loading Positions

2
Drive-in Doors

24'
Clear Height

HEAVY
Power

HEAVY INDUSTRIAL
Zoning

HEAVY
Load Slab

ESFR
Sprinklered

IMMEDIATE
Availability

CALL BROKERS
For Asking Rates

Michael Roy
+1 206 940 7199
michael.roy@kbcadvisors.com

Hans Vieser
+1 425 765 7926
hans.vieser@kbcadvisors.com

Brady Thomson
646 951 7219
bthomson@fortress.com

© 2024 KBC ADVISORS This information has been obtained from sources believed to be reliable but has not been verified for accuracy or completeness, and KBC Advisors disclaims any guarantees, warranties or representations, express or implied, as to the completeness or accuracy as to the information contained herein. You should conduct a careful, independent investigation of the property and verify all information. Any reliance on this information is solely at your own risk. The KBC ADVISORS logo is a service mark of KBC ADVISORS. All other marks displayed on this document are the property of their respective owners. Photos herein are the property of their respective owners. Use of these images without the express written consent of the owners is prohibited.

