

FOR LEASE

# AGC BUILDING

1200 Westlake Avenue North  
Seattle, WA 98109



**NEWMARK**

**CAVAN  
O'KEEFE**

Senior Managing Director  
206.395.2903  
[cavan.okeefe@nmrk.com](mailto:cavan.okeefe@nmrk.com)



## High-end Lake Union image

Waterfront access  
and marina



## BUILDING AND AVAILABILITY FEATURES

---

- ◆ Lobby exposure
- ◆ Well known, local ownership
- ◆ Great views of Lake Union and Downtown Seattle
- ◆ Walking distance to South Lake Union eateries and amenities
- ◆ Convenient access to I-5, Highway 99 and mass transit, along with on-site parking
- ◆ Bike rack and showers
- ◆ On-site conference facilities for large meetings
- ◆ Newly renovated common areas



## AVAILABILITY

---

**FLOOR 4 | Suite 405** 2,970 SF  
Available Now

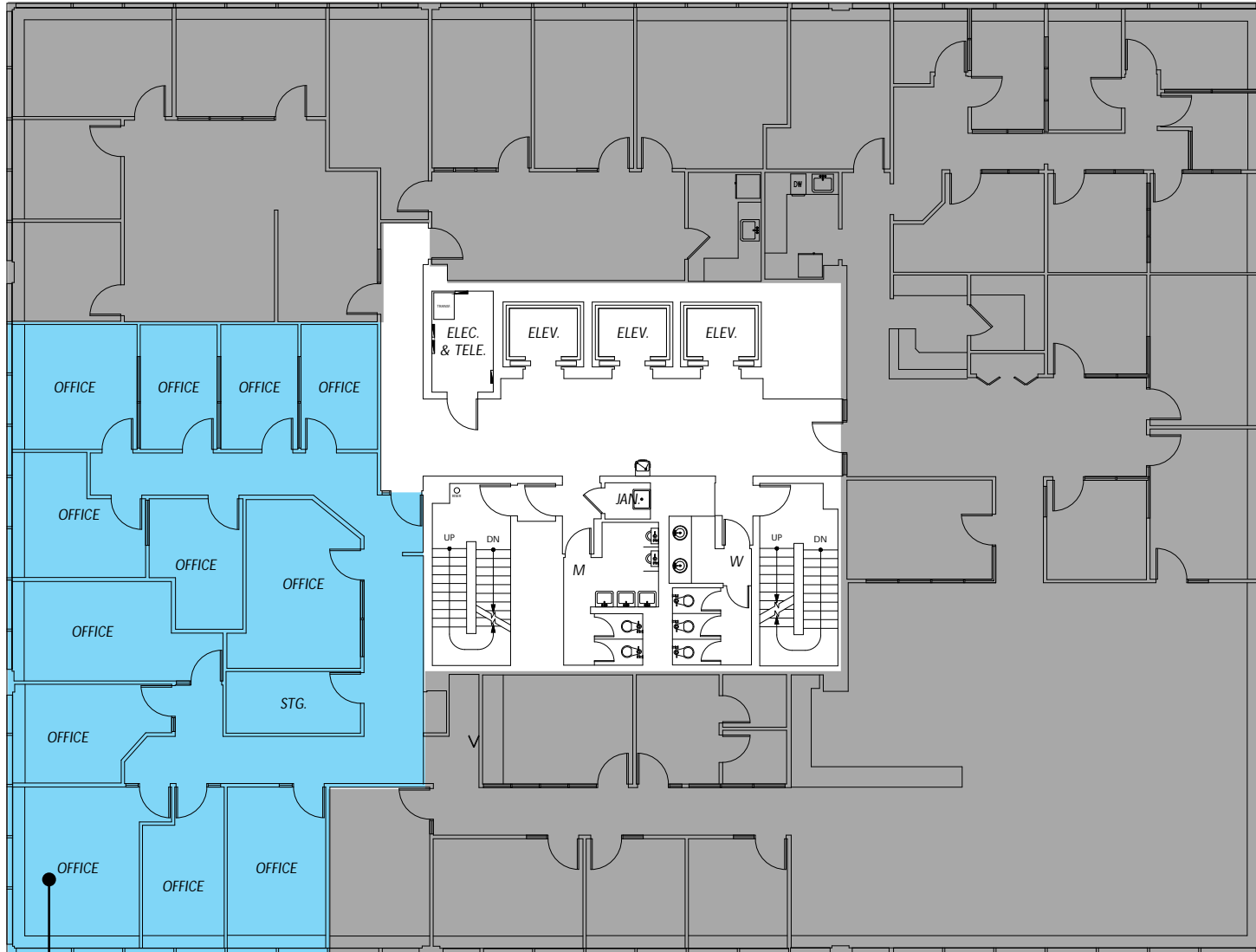
---

**FLOOR 8 | Suite 801** 2,857 SF  
Available 60 Days' Notice

---

Westlake Avenue North

Lake Union Views

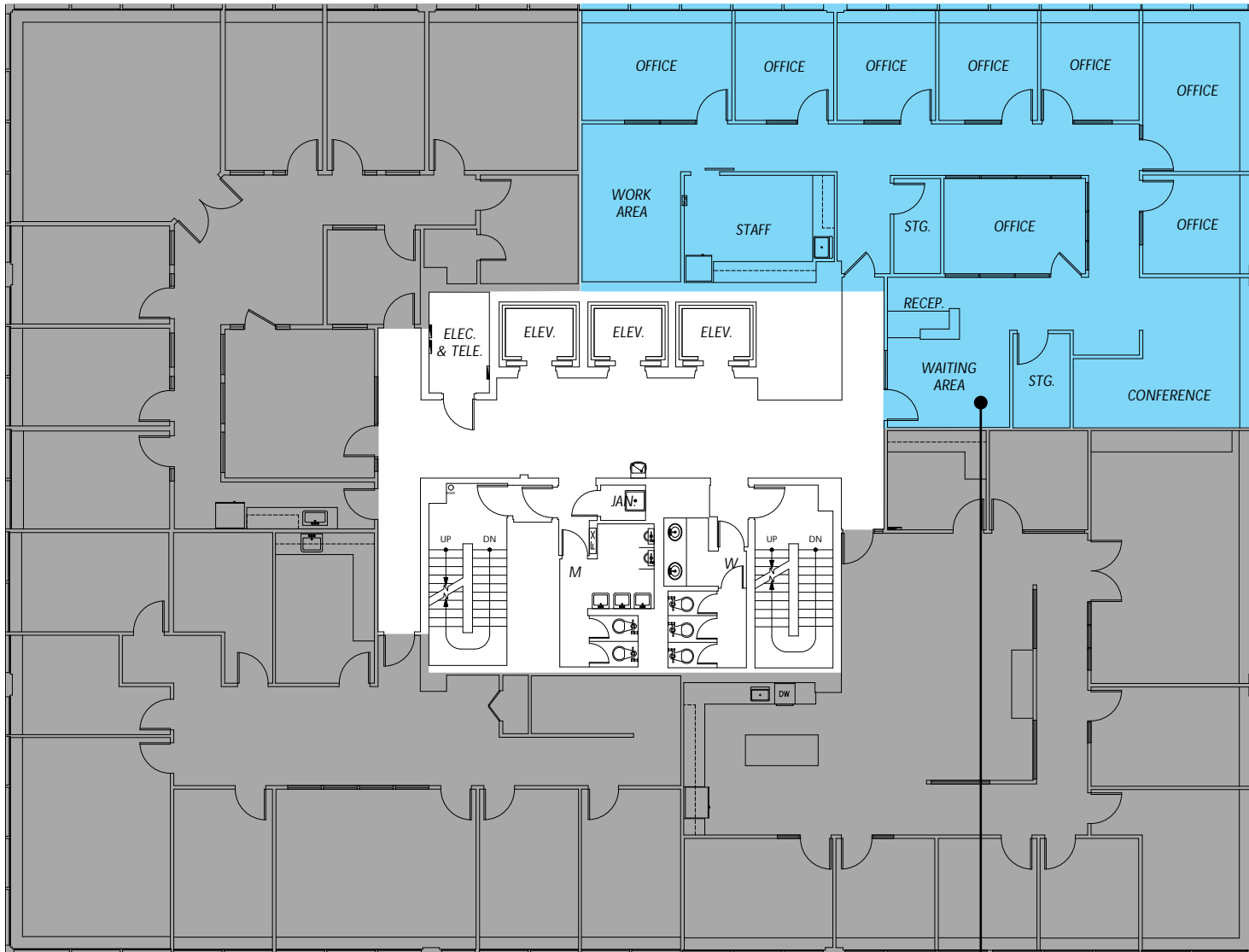


Suite 405  
2,970 SF  
Available Now

**FLOOR 4**  
2,970 SF

Westlake Avenue North

Lake Union Views



**FLOOR 8**  
2,857 SF

Suite 801  
2,857 SF  
Available 60 Days' Notice



# AGC BUILDING

1200 Westlake Avenue North  
Seattle, WA 98109

CAVAN O'KEEFE  
Senior Managing Director  
206.395.2903  
[cavan.okeefe@nrmk.com](mailto:cavan.okeefe@nrmk.com)



**NEWMARK**

The distributor of this communication is performing acts for which a real estate license is required. The information contained herein has been obtained from sources deemed reliable but has not been verified and no guarantee, warranty or representation, either express or implied, is made with respect to such information. Terms of sale or lease and availability are subject to change or withdrawal without notice. 18-1023\_5/19