

25 CENTRAL

Recently Refurbished
Office Building in
Downtown Kirkland
w/ Lake Washington Views

Lobby Level: 4,220 RSF
Available for Lease

(Divisible to 2,514 / 1,706 RSF)



VIEW DRONE VIDEO

BRODERICK
• GROUP •

JIM KINERK
(425) 646-5221
kinerk@broderickgroup.com

AL HODGE
(425) 646-5240
hodge@broderickgroup.com

The information contained herein has been given to us by the owner or sources which we deem reliable. We have no reason to doubt its accuracy, but we do not guarantee it. Prospective tenants should carefully verify all information contained herein.

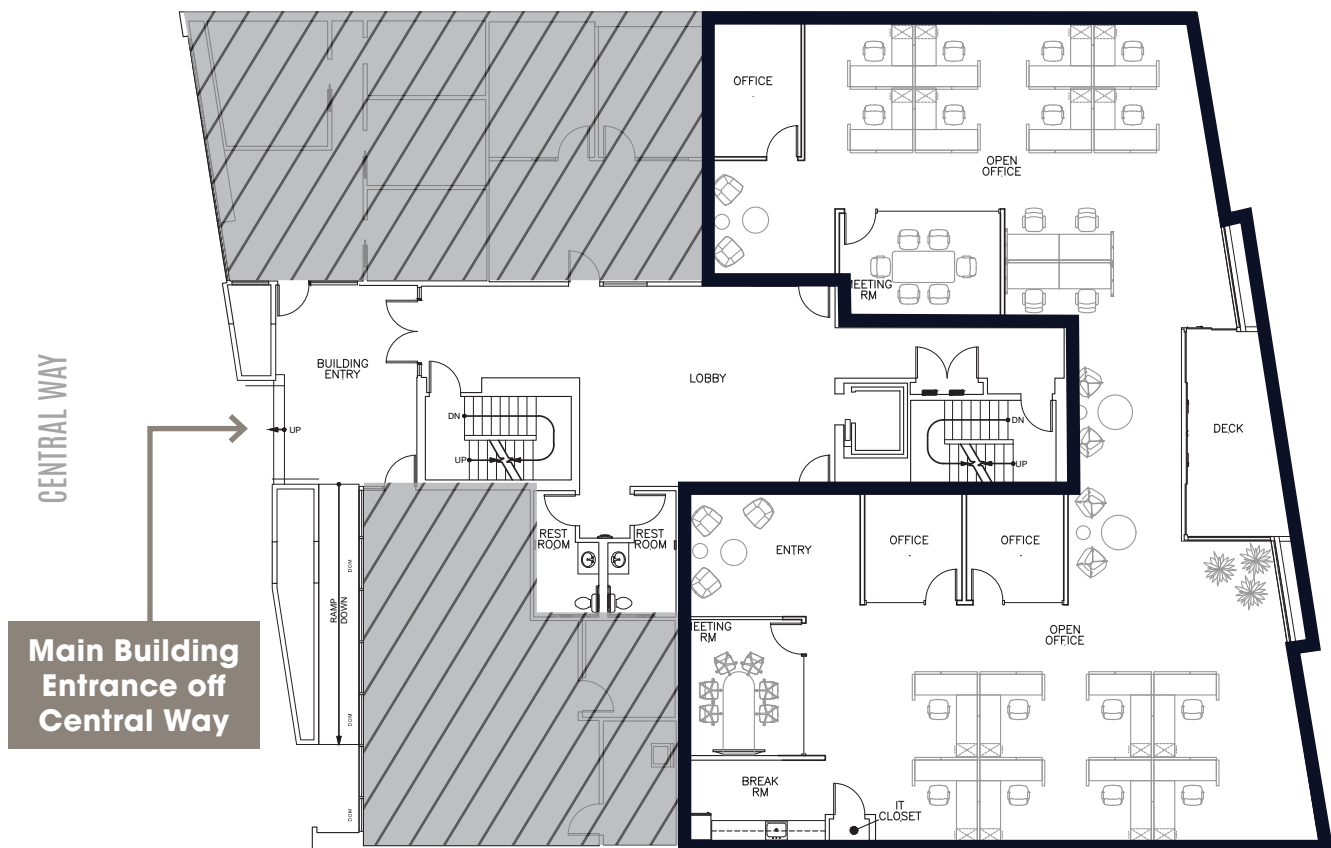
25 CENTRAL

IEWS OF

Marina Park & Lake Washington

LOBBY
LEVEL / RSF TOTAL
4,220

- Lobby Level - 4,220 RSF (first floor space)
- Available Now
- High visibility space located just off of the building lobby
- **MAKE-READY BUILDOUT:** Two meeting rooms, three private offices, large open area, break room, and balcony deck with Lake Washington views



25 CENTRAL

IEWS OF

Marina Park & Lake Washington

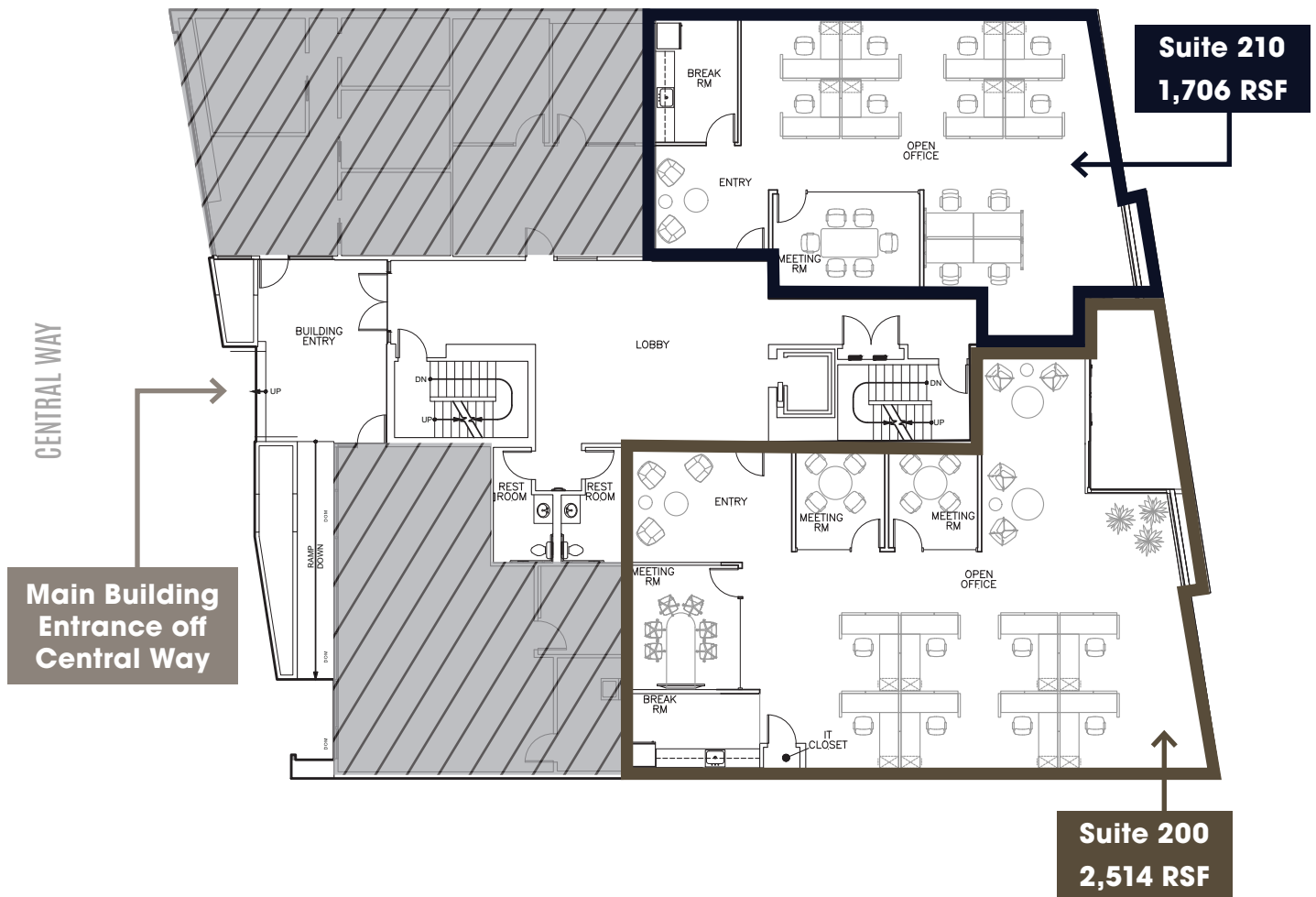
LOBBY
LEVEL

RSF TOTAL

4,220

DIVISIBLE TO 2,514
RSF AND 1,706 RSF

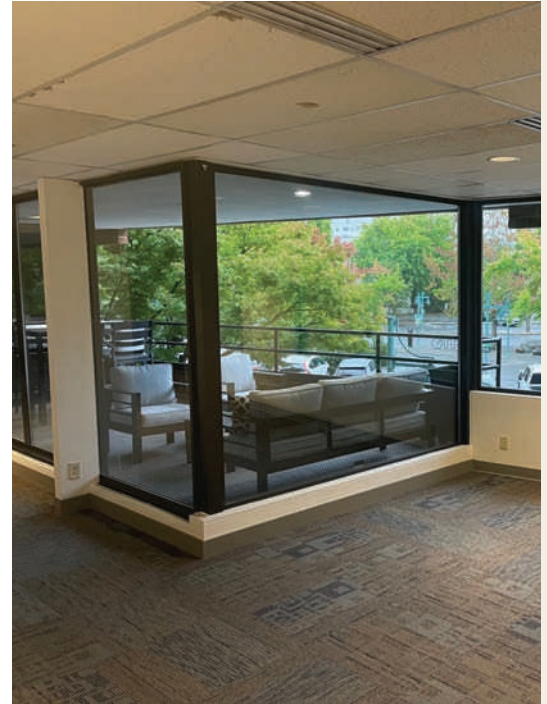
- Lobby Level - 4,220 RSF (first floor space)
- Available Now
- High visibility space located just off of the building lobby
- **MAKE-READY BUILDOUT**



25 CENTRAL

INTERIOR

Main Lobby & Suite



BUILDING DETAILS

- Newly renovated building entrance, lobby and restrooms
- Marina Park and Lake Washington views
- Covered reserved parking spaces
- City of Kirkland parking available nearby
- Internet Providers: Comcast, Frontier, Allstream
- Easy walking to Kirkland retail shops and restaurants

BRODERICK
• GROUP •

JIM KINERK
(425) 646-5221
kinerk@broderickgroup.com

AL HODGE
(425) 646-5240
hodge@broderickgroup.com

The information contained herein has been given to us by the owner or sources which we deem reliable. We have no reason to doubt its accuracy, but we do not guarantee it. Prospective tenants should carefully verify all information contained herein.

25 CENTRAL

NEARBY Amenities

