

# Echo Lake Apartments

19240 Aurora Avenue N, Shoreline, WA 98133  
Suite B - Commercial Space For Lease

CBRE



Available

# Property Overview

Echo Lake Apartments is a six-story, 289-unit Class A multi-family development in Shoreline, WA, right off Highway 99. It features a four-way signalized intersection and great visibility, with access to the RapidRide E Line and Interurban Trail. Located just 1.5 miles from the Shoreline North/185th Link Light Rail Station, the property is surrounded by city parks and is close to schools, Costco, Home Depot, and Starbucks. The charming residential areas offer a welcoming atmosphere, while commuters enjoy easy access to I-5 and Highway 99, with public transportation options nearby at the Aurora Village Transit Center and Shoreline Park & Ride.



Space Size: +/- 1,192 SF

Asking Rate/NNN: Please call Brokers

Incredible building branding signage opportunity

Prominent End Cap

Ideal space for retail services, office, and medical uses

Directly Situated on Highway 99, RapidRide E Line, & Interurban Trail

Strong traffic counts: 32,919 vehicles per day

3 reserved parking stalls, additional employee parking available

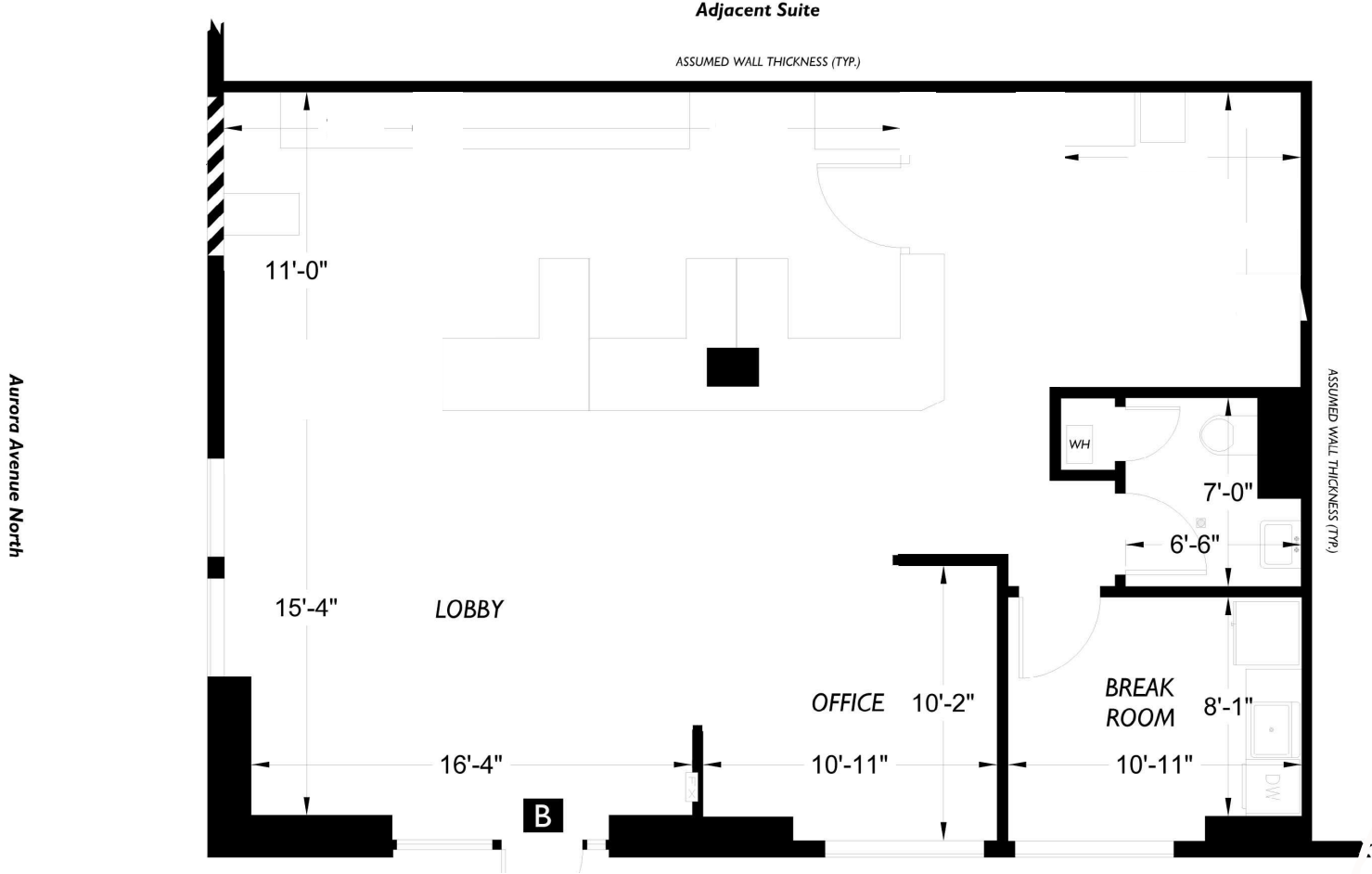
Shoreline Demographics	1 MILES	3 MILES	5 MILES
<b>2024 Population</b>	20,076	128,176	287,172
<b>2024 Daytime Population</b>	19,944	106,889	246,958
<b>2024 Median Age</b>	41.50	41.80	40.80
<b>2024 Average Household Income</b>	\$142,361	\$152,087	\$154,716

1150 North 192nd Street  
Shoreline, WA 98133  
(206) 546-2400

echolake@secpropr.com  
www.echolakeapartments.com

192ND STREET

# Floor Plan



**Retail**

+/- 1,192 RSF





# Map



Aurora Marketplace  
**SAFWAY** **TJ-MAXX**  
**DOLLAR TREE**

Burlington

**REGAL**

Aurora Village Medical Center  
**COSTCO WHOLESALE** **THE HOME DEPOT** **PETCO**  
**BIG 5** UW Medicine

Ballinger Village  
**RITE AID** **THRIFTWAY**

The Shops at Richmond Beach  
**QFC** **SWEDISH**



Subject Site

Shoreline Sports Plex

Town Center at Lake Forest Park  
**RITE AID** **ROSS** **ACE**  
**Albertsons** **MUDBAY**  
**THIRD PLACE BOOKS**

KENMORE

**Fred Meyer**  
**AutoZone**

Shoreline Marketplace  
**TRADER JOE'S**  
 The Everett Clinic  
**MUDBAY**

**SAFWAY**

Shoreline  
 COMMUNITY COLLEGE

**town & country** **pure barre**  
 MARKETS  
**Marshalls** **goldfish swimschool**

SHORELINE

**LANDMARK THEATRES**

King County  
 Metro North Base

Parkwood Plaza  
**SAFWAY** **JOANN**

JACKSON PARK  
 GOLF COURSE

**Planet Fitness**

**QFC** **DOLLAR TREE**

Aurora Center  
**DAISO** **Planet Fitness**  
**Office DEPOT**

**SPROUTS FARMERS MARKET** **LA FITNESS**  
**PETSMART** **HomeGoods**

**Fred Meyer**

**LOWE'S**

**Puetz GOLF**

**SAFWAY**

Lake City Plaza  
**GROCERY OUTLET** **ACE** **O'Reilly**  
 AUTO PARTS

**THE HOME DEPOT**

**TJ-MAXX**

**QFC**

Carkeek Plaza  
**QFC**

UW Medicine

**W**

Northgate Station  
**Target** **DICK'S SPORTING GOODS** **NORDSTROM** **BEST BUY** **24 Hour Fitness**  
**BARNES & NOBLE** **petco**

Oak Tree Village  
**AMC THEATRES**

**NORTH SEATTLE COLLEGE**

**REGAL**

# Echo Lake Apartments

19240 Aurora Avenue N, Shoreline, WA 98133  
Suite B - Commercial Space



## CONTACTS

### Lourdes Valdesuso

CBRE  
Vice President  
M+1 206 618 7003  
[Lourdes.Valdesuso@cbre.com](mailto:Lourdes.Valdesuso@cbre.com)

### Gretchen Hamm

Coldwell Banker Commercial – Danforth  
M+1 206-972-1661  
[gretchen@gretahamm.com](mailto:gretchen@gretahamm.com)

**CBRE**



© 2024 CBRE, Inc. All rights reserved. This information has been obtained from sources believed reliable but has not been verified for accuracy or completeness. CBRE, Inc. makes no guarantee, representation or warranty and accepts no responsibility or liability as to the accuracy, completeness, or reliability of the information contained herein. You should conduct a careful, independent investigation of the property and verify all information. Any reliance on this information is solely at your own risk. CBRE and the CBRE logo are service marks of CBRE, Inc. All other marks displayed on this document are the property of their respective owners, and the use of such marks does not imply any affiliation with or endorsement of CBRE. Photos herein are the property of their respective owners. Use of these images without the express written consent of the owner is prohibited.