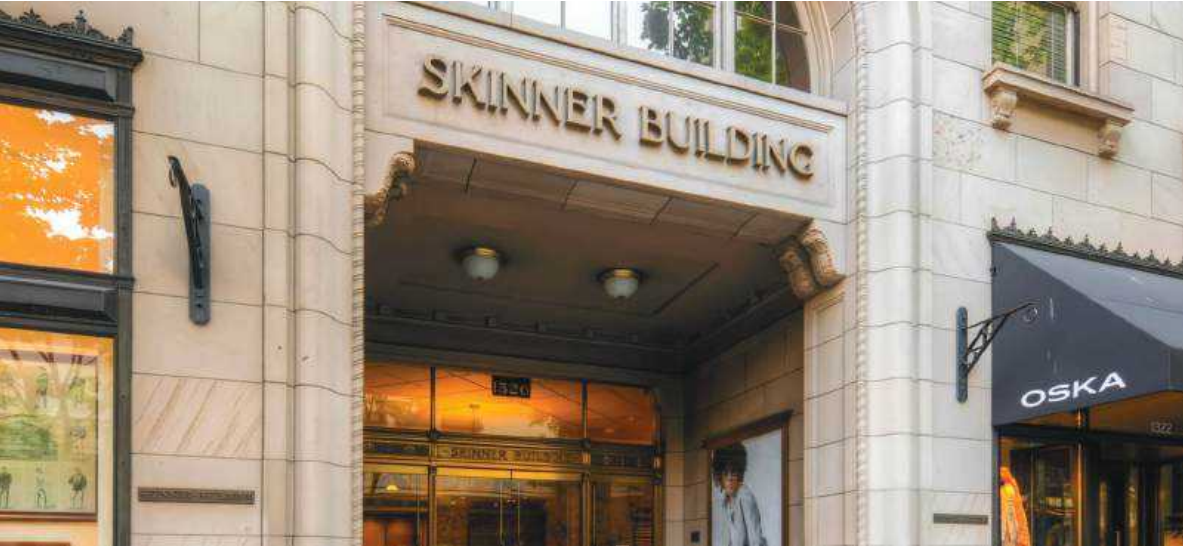




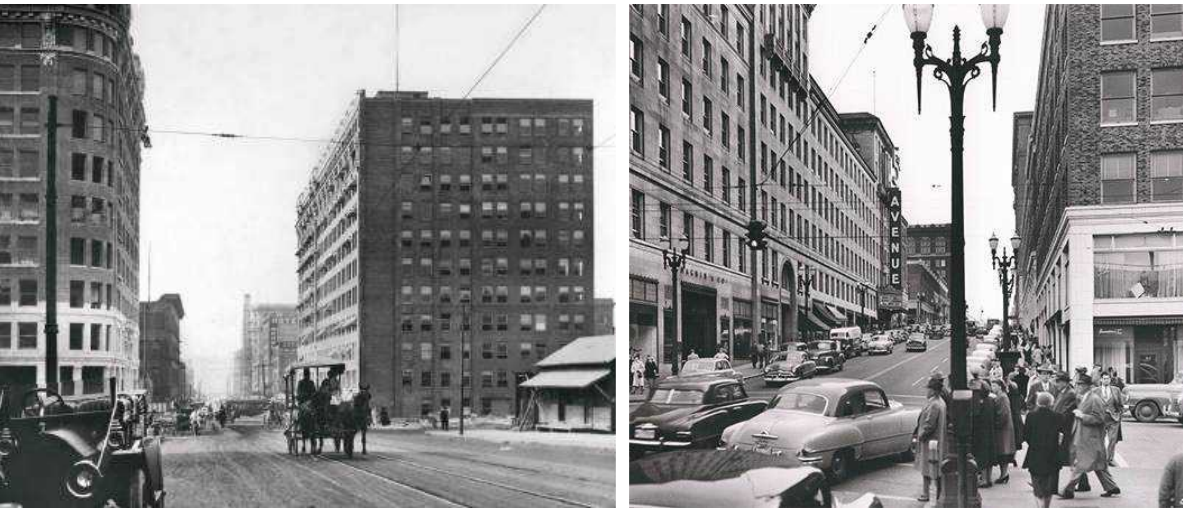
THE SKINNER BUILDING
1326 5TH AVE • SEATTLE, WA





A CENTURY OF HISTORY

In 1895, the original location of the University of Washington Campus relocated to its present location on the shores of Lake Washington. Since then, the famed 10-acres of the Metropolitan Tract has been guided under common direction with a focus on the Arts & Culture making it one of the most unique districts in the country.



10 Min Walk Demographics



119,741

DAYTIME
POPULATION



21,540

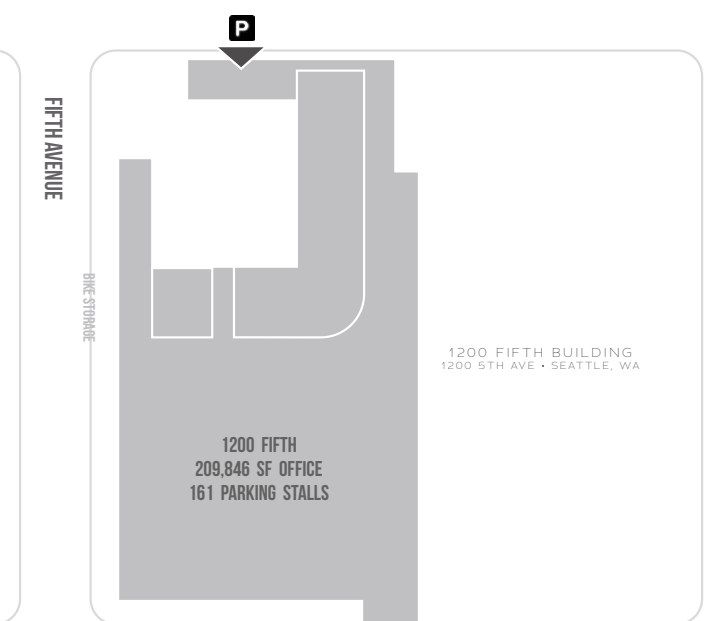
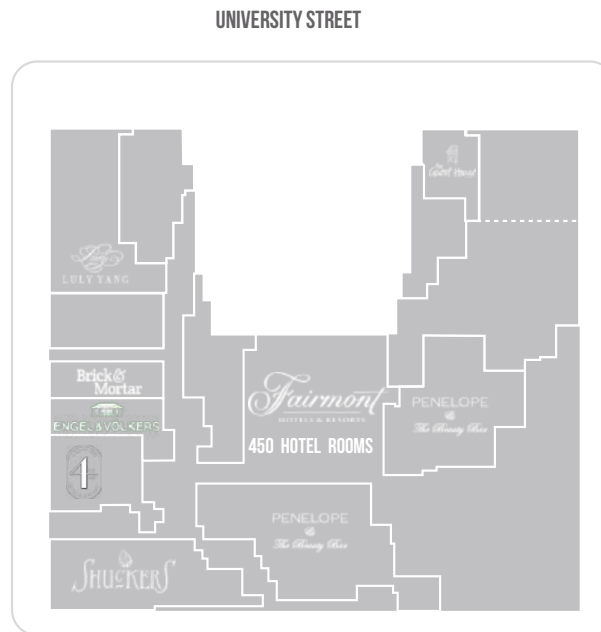
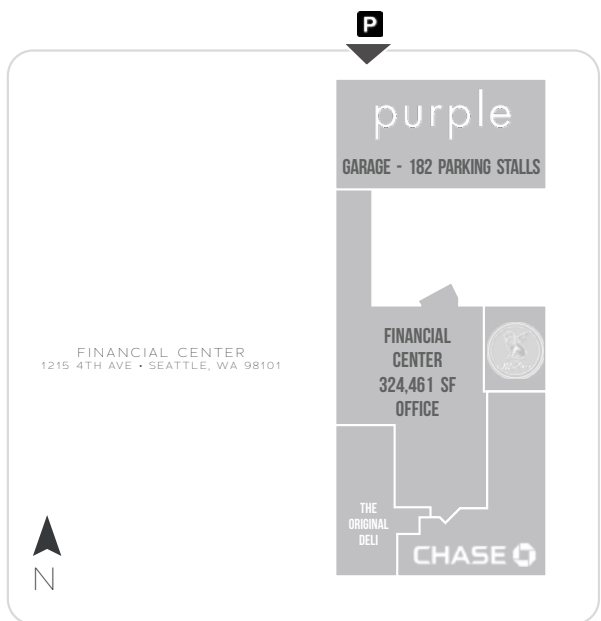
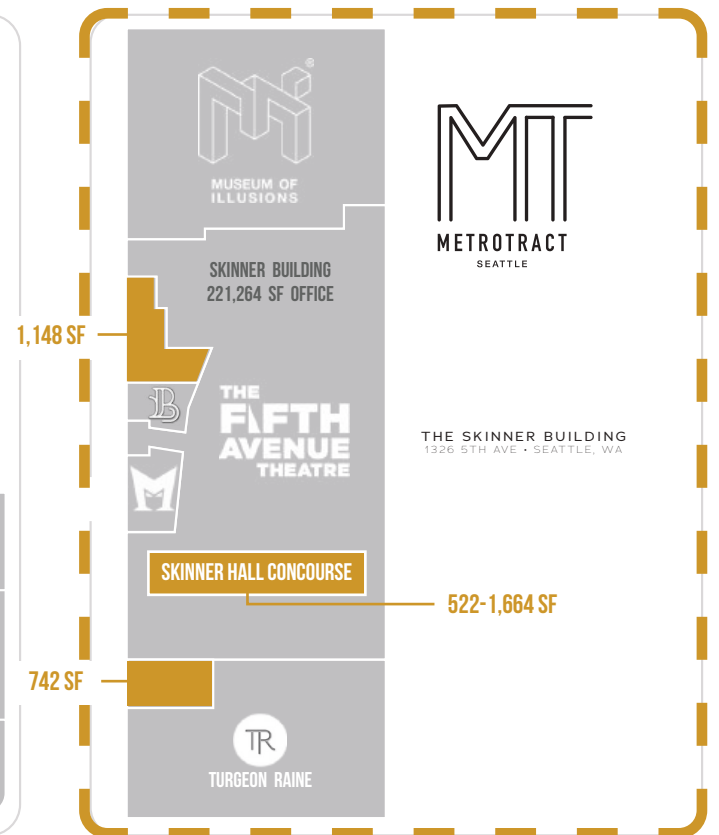
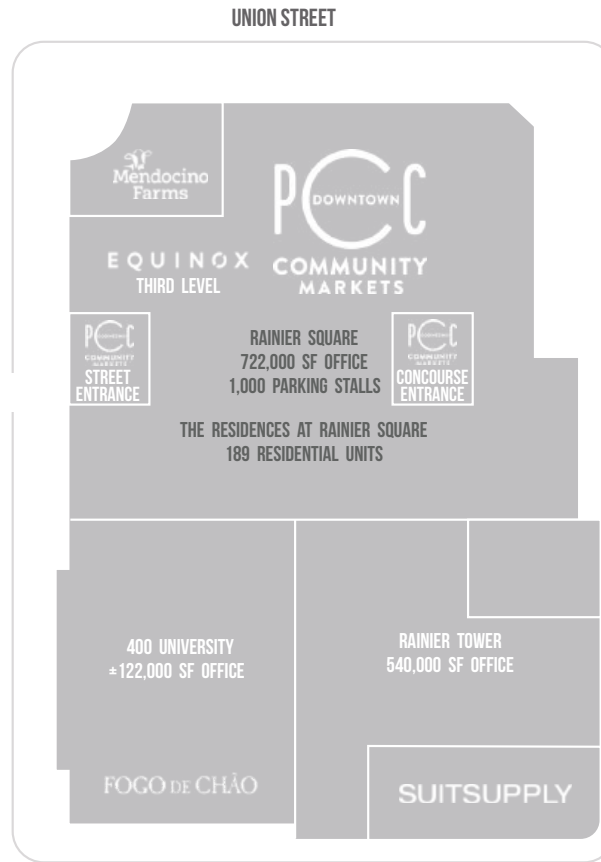
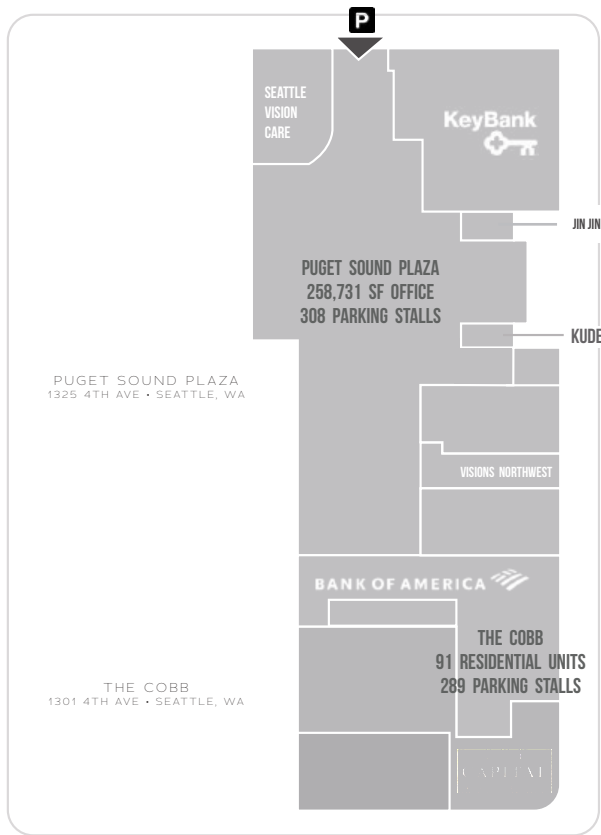
RESIDENTIAL
POPULATION

DOWNTOWN SEATTLE



ELLIOTT BAY

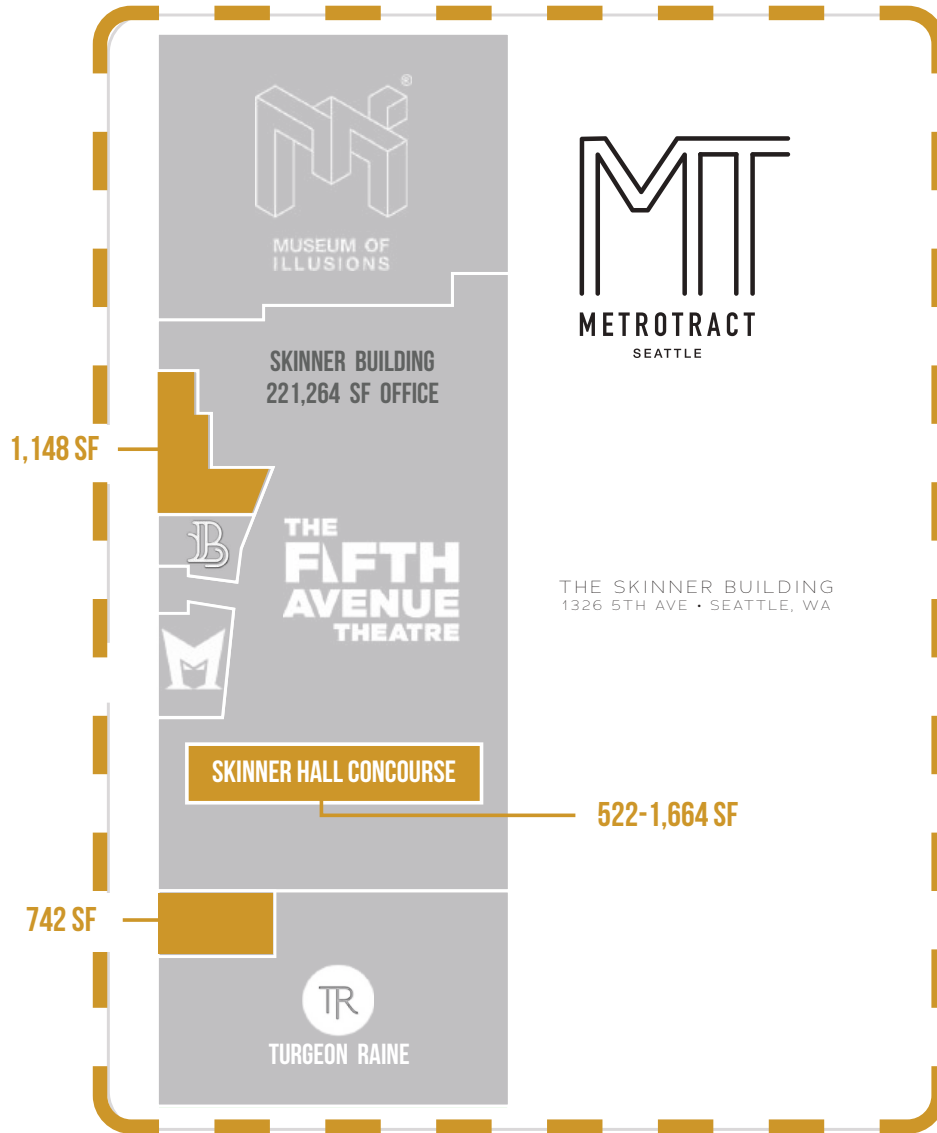
REAL RETAIL



SENECA STREET



UNION STREET



UNIVERSITY STREET



SKINNER BUILDING

Home to the new Turgeon Raine flagship store, the iconic 5th Ave Theater and it's 300,000+ annual visitors, and across from Suit Supply's new flagship store, the Skinner Building is one of the most recognizable historic buildings in downtown Seattle. The timeless architectural details are obvious throughout, while still offering the ability for new retail tenants to put their own unique stamp within their storefronts. The concourse level connecting the Skinner Building to Rainier Square, Union Square and the Hilton Hotel is undergoing a complete reimagining offering food and beverage and service tenants a unique opportunity to be a part of a market hall lineup of highly curated operators.

AVAILABLE SQ.FT.

1322 Fifth Ave.1,148 SF

Retail or Coffee / non-vented food user with direct lobby connectivity

1322 Fifth Ave.742 SF

Concourse 522 - 1,664 SF

Contact for details

Please inquire for rates



MT
METROTRACT
SEATTLE

SHOP

EAT

DRINK

EXPLORE

REAL **RETAIL**

SKINNER BUILDING

MT

METROTRACT
SEATTLE

THE SKINNER BUILDING
1326 5TH AVE • SEATTLE, WA

REAL **RETAIL**

ANDREW MILLER
206-381-1206 OFFICE
206-818-3629 CELL
AMILLER@REAL-RETAIL.NET

ERIC ZUEHLSORFF
206-838-5481 OFFICE
808-221-1134 CELL
ERIC@REAL-RETAIL.NET