

FOR SUBLEASE

WOODINVILLE DISTRIBUTION CENTER - BLDG A

8131 W BOSTIAN RD | WOODINVILLE, WA



*39,079 SF available for sublease in Maltby,
with easy access to SR 522 and I-405.*

Available immediately

39,079 SF

\$1.00/SF, NNN blended

11 dock-high doors

1 door with drive-in ramp access

Sublease expiration: January 31, 2026

Office furniture can be made available for sub-tenant

\$1.00

PSF, NNN BLENDED

11

DOCK-HIGH DOORS

32'

CLEAR HEIGHT

COLTON TEGLOVIC

Vice President

425.281.5261

colton.teglovic@kidder.com

RYAN FOSTER

Associate Vice President

425.450.1124

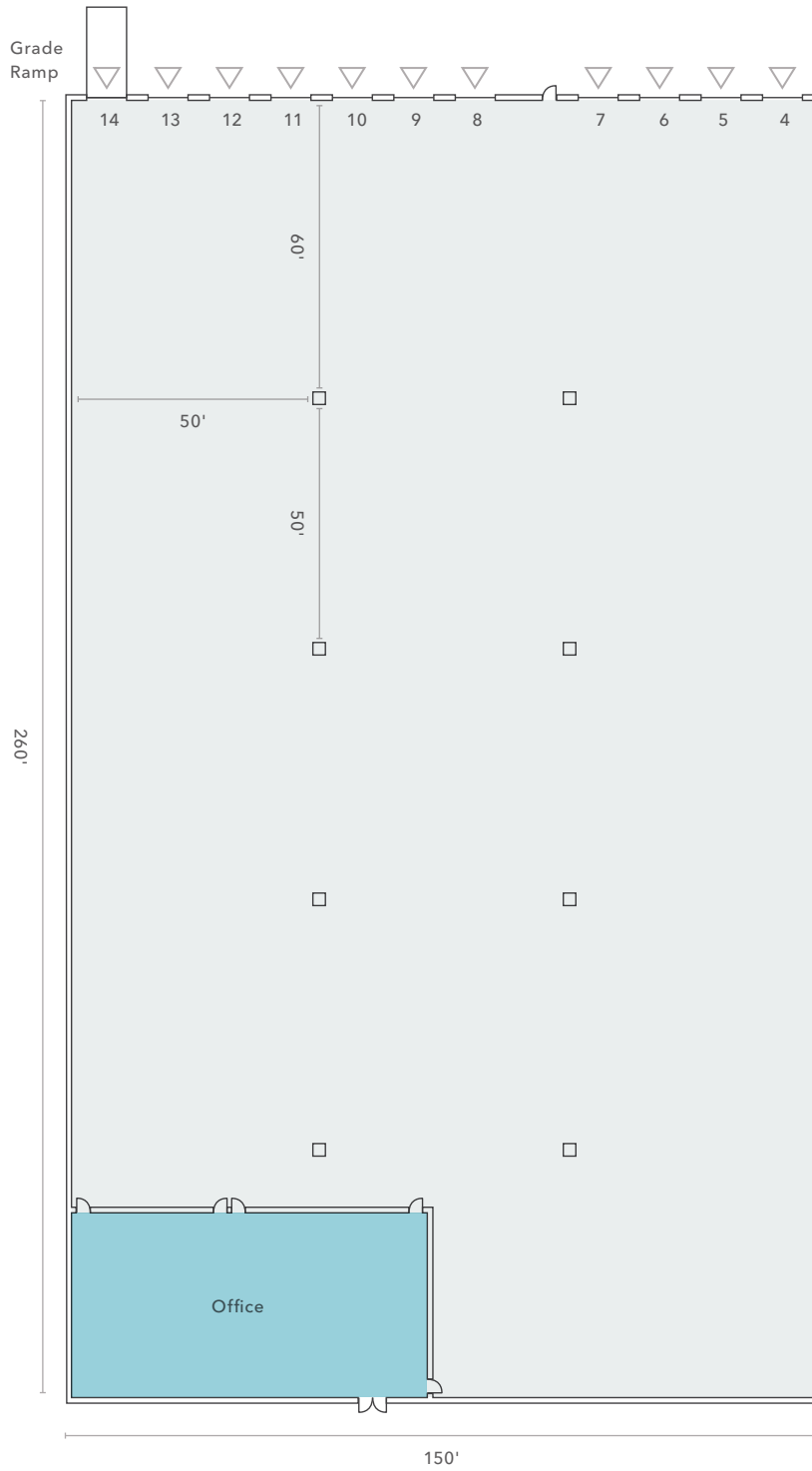
ryan.foster@kidder.com

[KIDDER.COM](https://www.kidder.com)

This information supplied herein is from sources we deem reliable. It is provided without any representation, warranty, or guarantee, expressed or implied as to its accuracy. Prospective Buyer or Tenant should conduct an independent investigation and verification of all matters deemed to be material, including, but not limited to, statements of income and expenses. Consult your attorney, accountant, or other professional advisor.

km Kidder
Mathews

WAREHOUSE

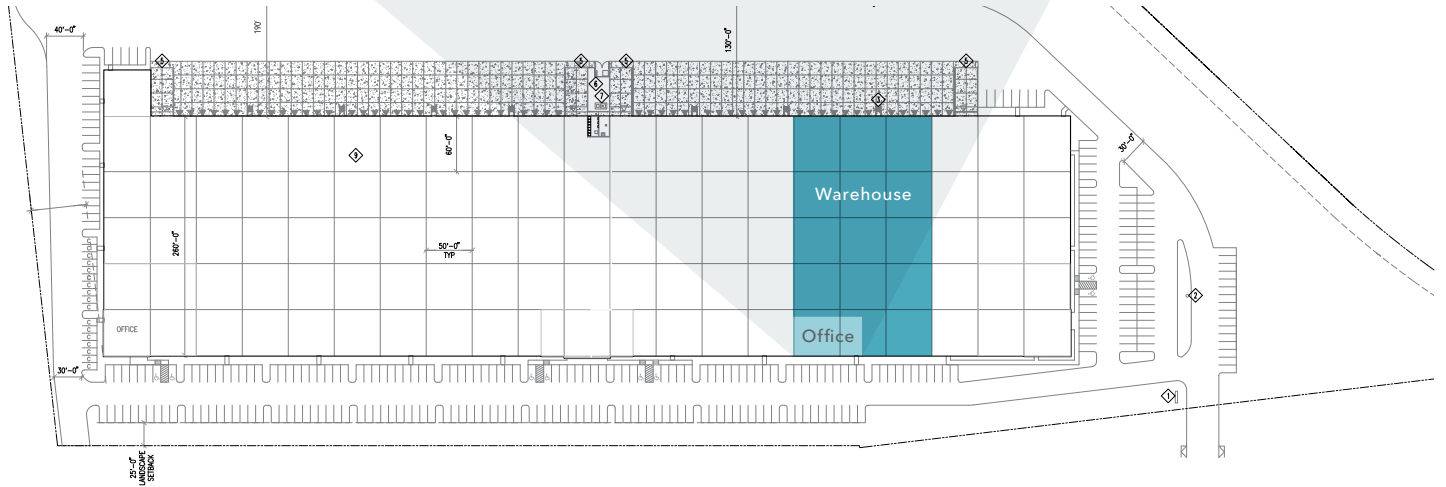
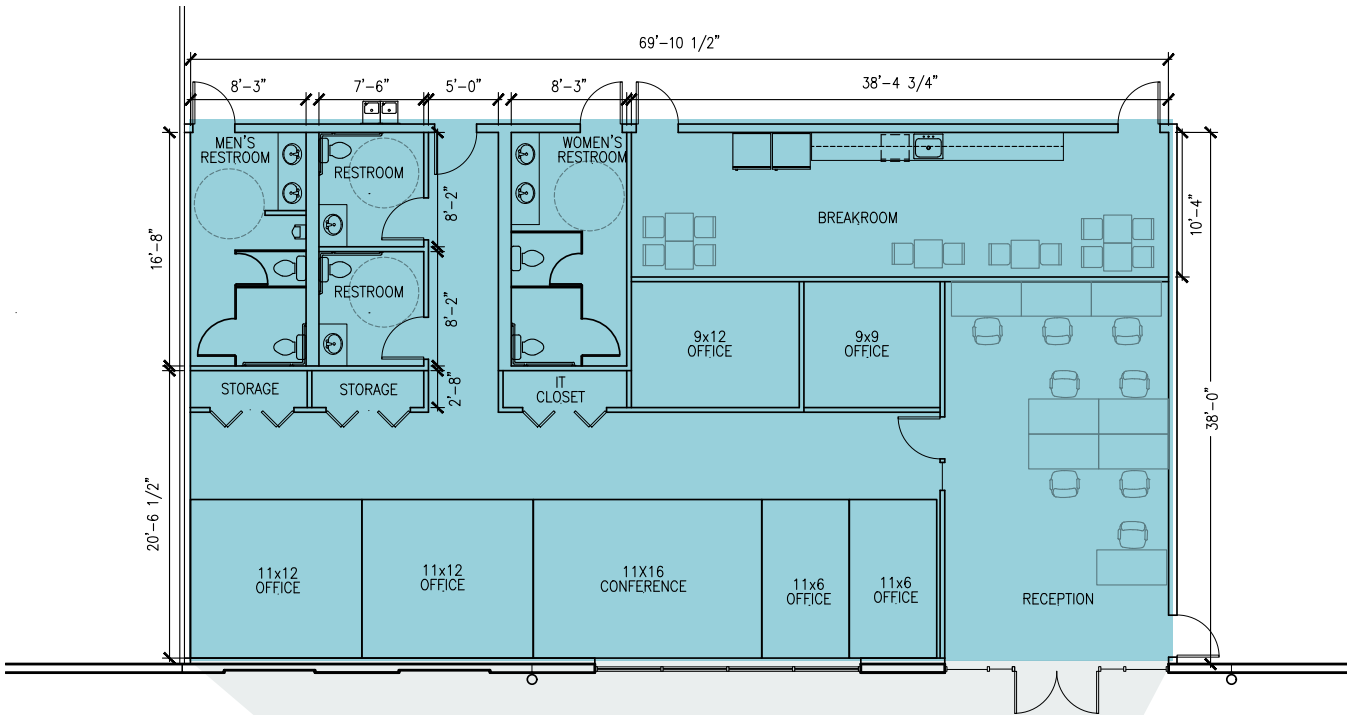


△ Dock-high loading

KIDDER.COM

This information supplied herein is from sources we deem reliable. It is provided without any representation, warranty, or guarantee, expressed or implied as to its accuracy. Prospective Buyer or Tenant should conduct an independent investigation and verification of all matters deemed to be material, including, but not limited to, statements of income and expenses. Consult your attorney, accountant, or other professional advisor.

OFFICE FLOORPLAN



COLTON TEGLOVIC
 Vice President
 425.281.5261
 colton.teglovic@kidder.com

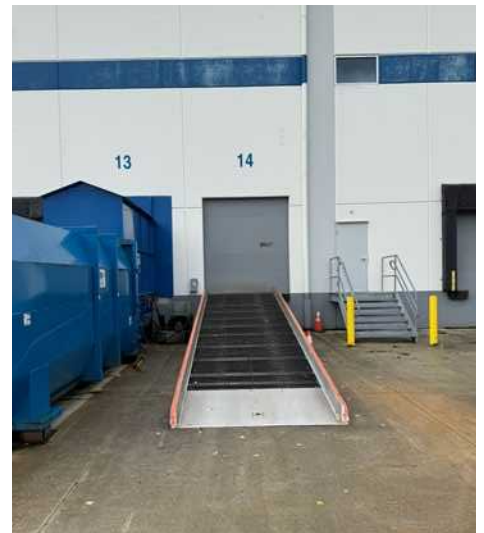
RYAN FOSTER
 Associate Vice President
 425.450.1124
 ryan.foster@kidder.com

KIDDER.COM

This information supplied herein is from sources we deem reliable. It is provided without any representation, warranty, or guarantee, expressed or implied as to its accuracy. Prospective Buyer or Tenant should conduct an independent investigation and verification of all matters deemed to be material, including, but not limited to, statements of income and expenses. Consult your attorney, accountant, or other professional advisor.



WOODINVILLE DISTRIBUTION CENTER

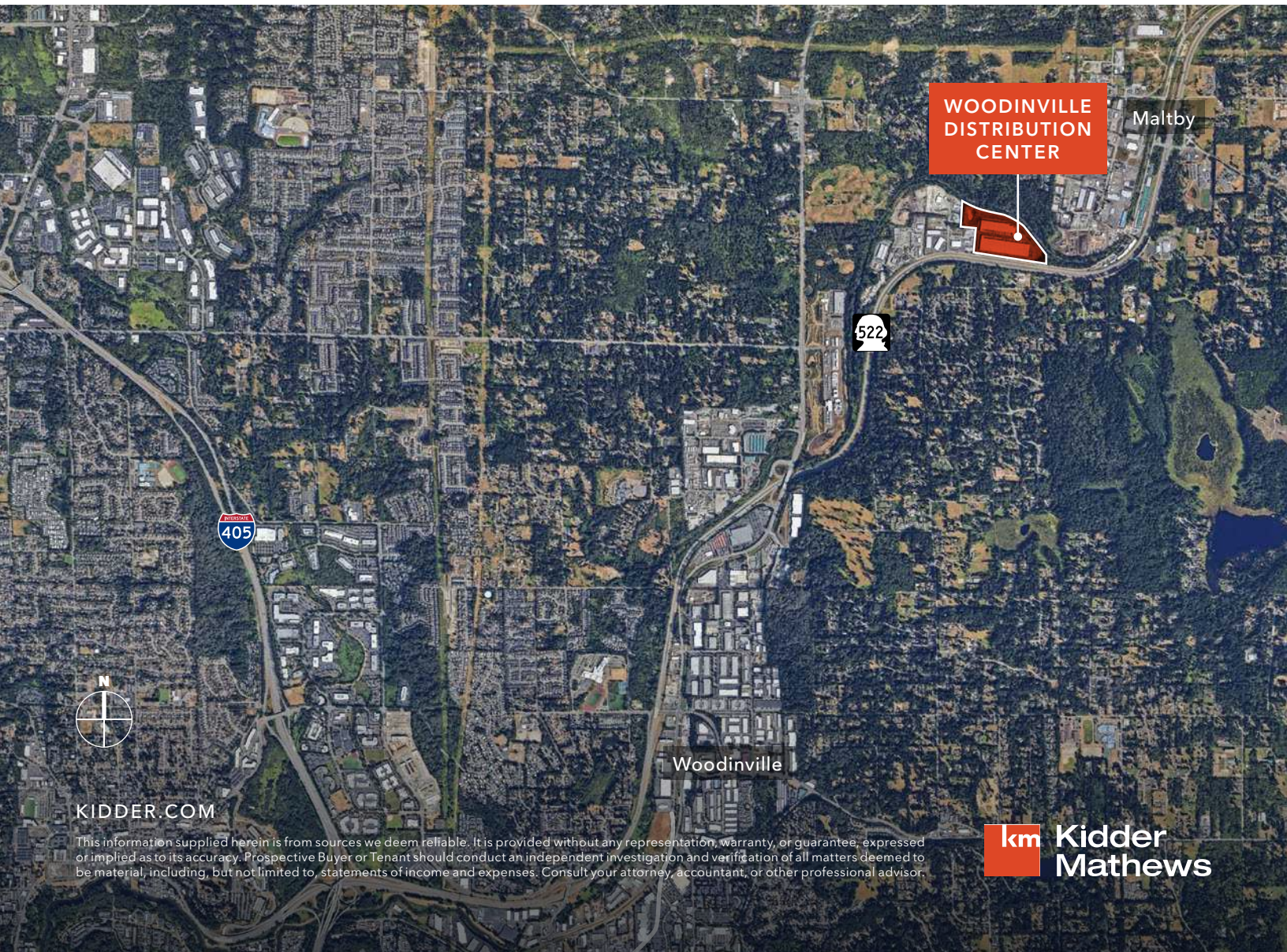


KIDDER.COM

This information supplied herein is from sources we deem reliable. It is provided without any representation, warranty, or guarantee, expressed or implied as to its accuracy. Prospective Buyer or Tenant should conduct an independent investigation and verification of all matters deemed to be material, including, but not limited to, statements of income and expenses. Consult your attorney, accountant, or other professional advisor.



WOODINVILLE DISTRIBUTION CENTER



KIDDER.COM

This information supplied herein is from sources we deem reliable. It is provided without any representation, warranty, or guarantee, expressed or implied as to its accuracy. Prospective Buyer or Tenant should conduct an independent investigation and verification of all matters deemed to be material, including, but not limited to, statements of income and expenses. Consult your attorney, accountant, or other professional advisor.

km Kidder Mathews