



CLARION PARTNERS

For Lease

NAI Puget Sound
Properties

SeaTac Industrial Park

Building 1

18818 13th Place South

SeaTac, WA

3,867 Square Feet Available



Property Highlights

- 3,867 SF with 597 SF of office
- 3 Grade Level Doors
- 14'-16' clear height
- Located on Des Moines Memorial Drive, just South of SeaTac Int'l Airport
- Close proximity to 1-5, SR-99 and SR-509
- Available now
- Call for pricing



NAI Puget Sound
Properties

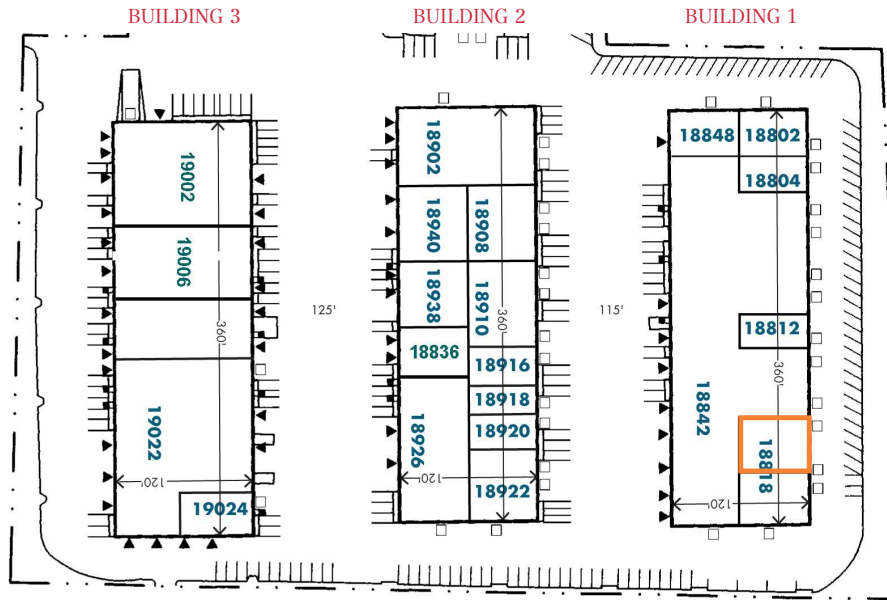
Kent Channing
+1 425 586 5628
kchanning@nai-psp.com

Arie Salomon, SIOR, CCIM
+1 425 586 5636
asalomon@nai-psp.com



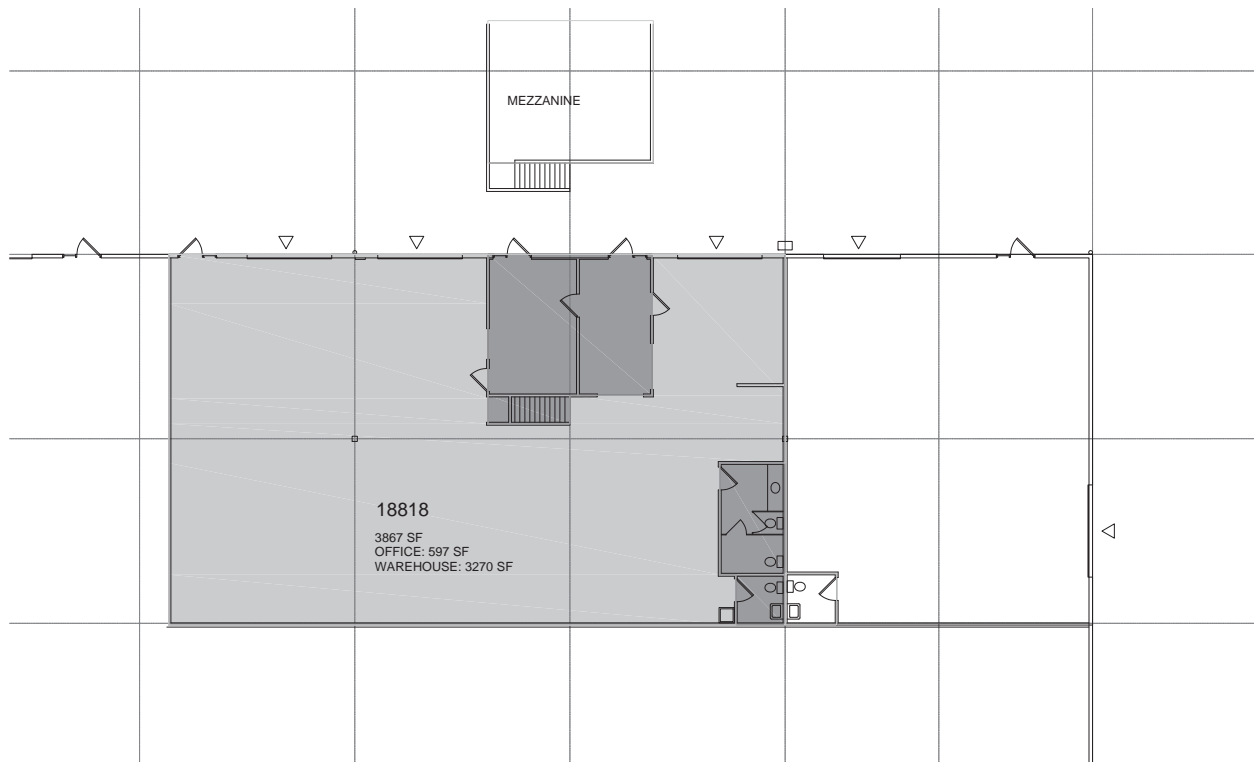
CLARION PARTNERS

18818 13th Place South SeaTac, WA



LEGEND

- ▲ DOCK-HIGH DOOR
- GRADE-LEVEL DOOR



Property Owned by:



10900 NE 8th Street, Suite 1500

Bellevue, Washington 98004

+1 425 586 5600

nai-psp.com