

10,368 SF INDUSTRIAL SPACE



FOR SUBLEASE

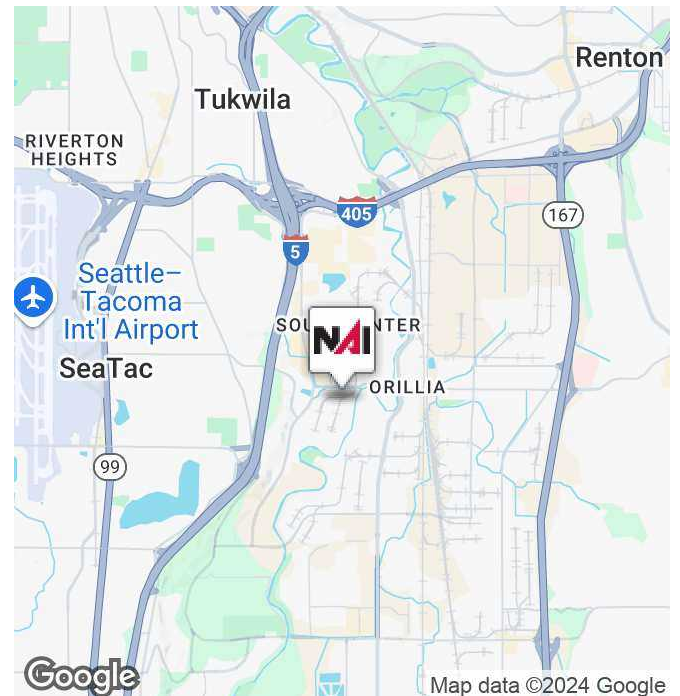


Seattle South Business Park, Building 4

18205 Andover Park West, Tukwila, WA 98188

Property Highlights

- 10,368 SF with 1,115 SF of Office
- 2 Dock High Doors plus exterior loading platform with 1 Dock High position and 1 ramped Grade Level access
- 24' Clear Height
- Available June 1, 2025
- Sublease through December 31, 2026
- Call for Rates



<https://www.nai-pp.com>

Luke Jarvis
Associate | 425.586.5609
lj Jarvis@nai-pp.com

Bret Matysik
Associate Vice President | 425.586.5617
bmatysik@nai-pp.com

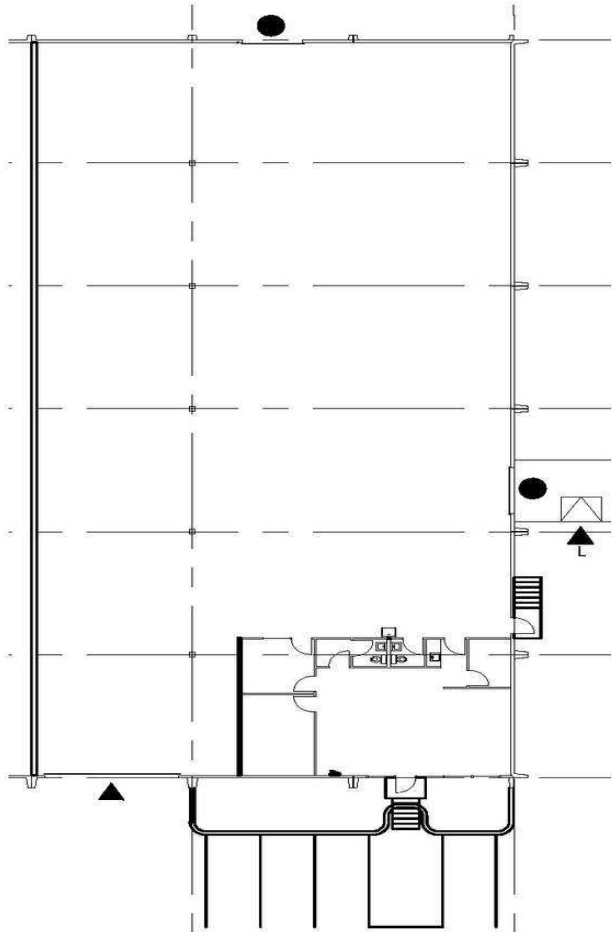
NO WARRANTY, EXPRESS OR IMPLIED, IS MADE AS TO THE ACCURACY OF THE INFORMATION CONTAINED HEREIN. THIS INFORMATION IS SUBMITTED SUBJECT TO ERRORS, OMISSIONS, CHANGE OF PRICE, RENTAL OR OTHER CONDITIONS, WITHDRAWAL WITHOUT NOTICE, AND IS SUBJECT TO ANY SPECIAL LISTING CONDITIONS IMPOSED BY OUR PRINCIPALS, COOPERATING BROKERS, BUYERS, TENANTS AND OTHER PARTIES WHO RECEIVE THIS DOCUMENT SHOULD NOT RELY ON IT, BUT SHOULD USE IT AS A STARTING POINT OF ANALYSIS, AND SHOULD INDEPENDENTLY CONFIRM THE ACCURACY OF THE INFORMATION CONTAINED HEREIN THROUGH A DUE DILIGENCE REVIEW OF THE BOOKS, RECORDS, FILES AND DOCUMENTS THAT CONSTITUTE RELIABLE SOURCES OF THE INFORMATION DESCRIBED HEREIN. LOGOS ARE FOR IDENTIFICATION PURPOSES ONLY AND MAY BE TRADEMARKS OF THEIR RESPECTIVE COMPANIES.

10,368 SF INDUSTRIAL SPACE

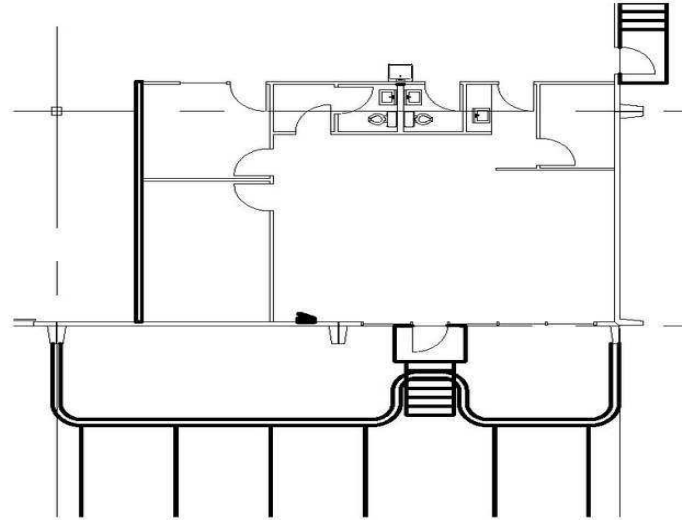


FOR SUBLEASE

1ST FLOOR PLAN



1ST FLOOR OFFICE PLAN



- ▲ Dock-high door
- ◻ Dock-high door w/ pit leveler
- Rail Door