

PARK 520 - NEAR FUTURE LIGHT RAIL STATION

6825 - 6855 176TH AVE NE, REDMOND, WASHINGTON



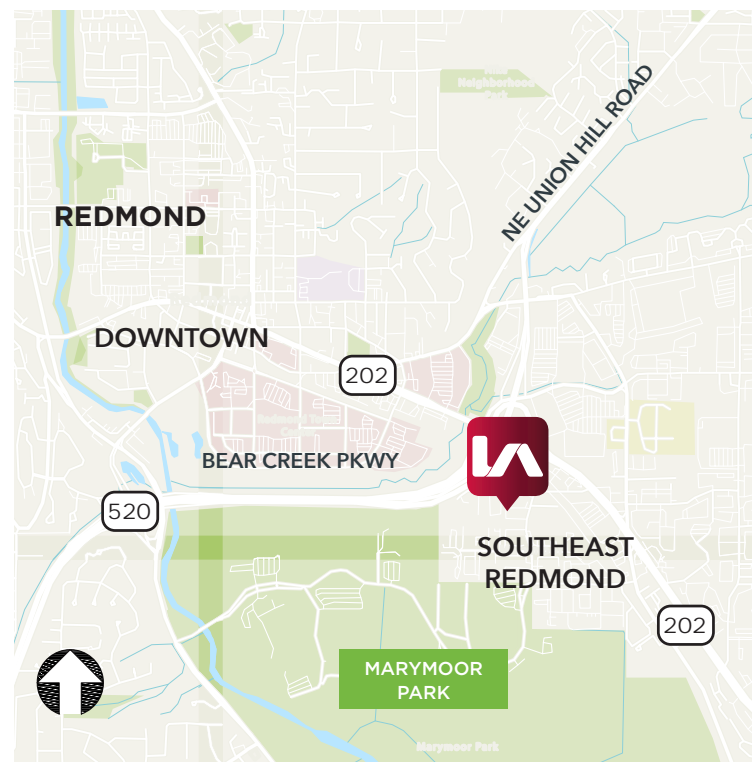
INDUSTRIAL / FLEX FOR LEASE

LISTING INFORMATION

ADDRESS:	6855 176th Ave NE, Redmond, WA
SUITE 125 A:	3,654 SF (includes dock loading)
SUITE 265:	3,543 SF (divisible)
SUITE 265 A:	1,609 SF
SUITE 265 B:	1,934 SF
ZONING:	MDD2

COMMENTS

- » Rare Light Industrial space in Redmond Business Park
- » Across the street from the future SE Redmond /Marymoor Village light rail station (estimated 2024)
- » Easy access to WA-520 and Downtown Redmond
- » Office/Warehouse/Mezzanine space available



Aaron Mathieu

amathieu@lee-associates.com

C 206.948.4670

Jim Reed, SIOR

jreed@lee-associates.com

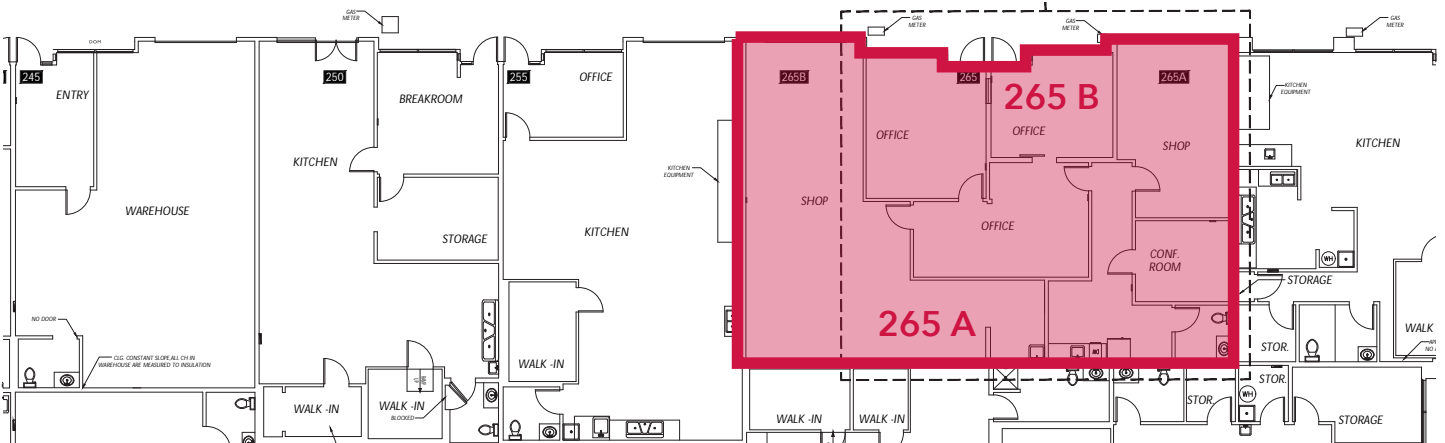
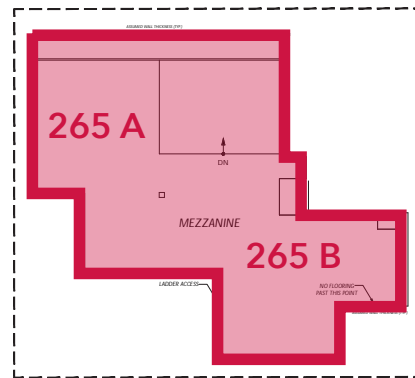
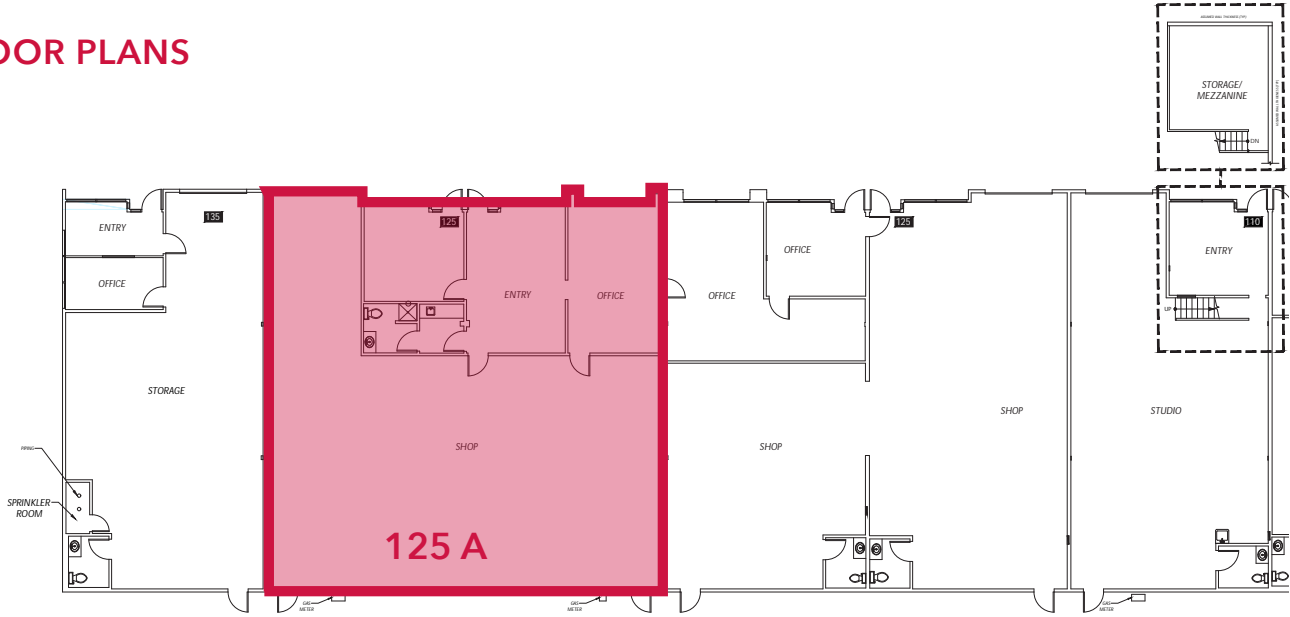
C 425.679.1681

Carson Scott

cscott@lee-associates.com

C 425.736.3752

FLOOR PLANS



Aaron Mathieu
 amathieu@lee-associates.com
 C 206.948.4670

Jim Reed, SIOR
 jreed@lee-associates.com
 C 425.679.1681

Carson Scott
 cscott@lee-associates.com
 C 425.736.3752