

FOR SUBLEASE



→ [VIEW VIDEOS & PHOTOS](#)

2460 PACIFIC HWY E

*5,700 SF Industrial / Retail Flex Space
Available Immediately*

2460 PACIFIC HWY E, TACOMA, WA 98424

PRICING

MONTHLY BASE RENT \$5,700.00

MONTHLY NNN \$1,100.00

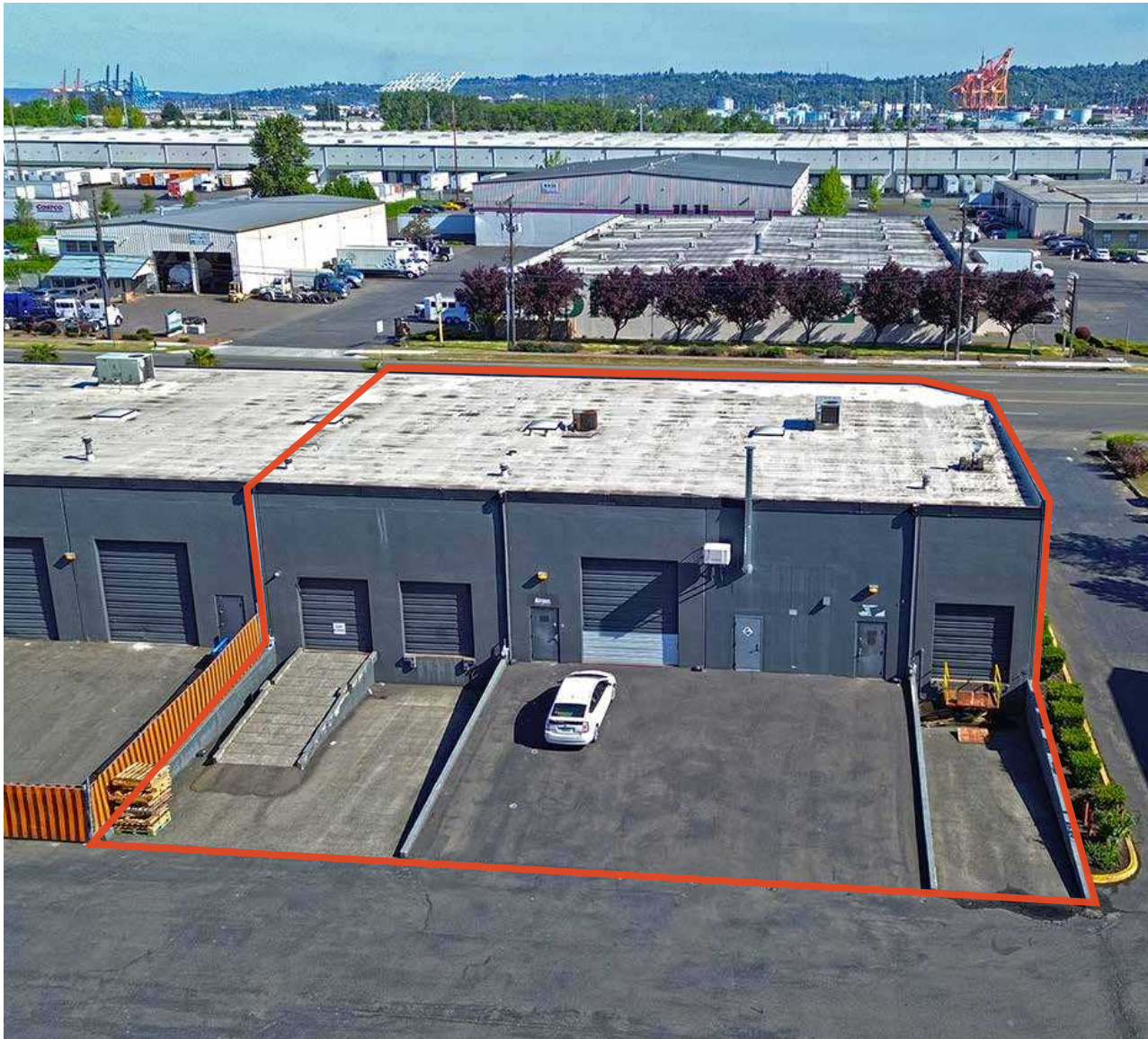
TOTAL MONTHLY RENT \$6,800.00

MATT MCLENNAN, SIOR, CCIM
253.722.1458
matt.mclennan@kidder.com

KRAIG HEETER, SIOR
206.248.7313
kraig.heeter@kidder.com

KIDDER.COM

 **Kidder
Mathews**

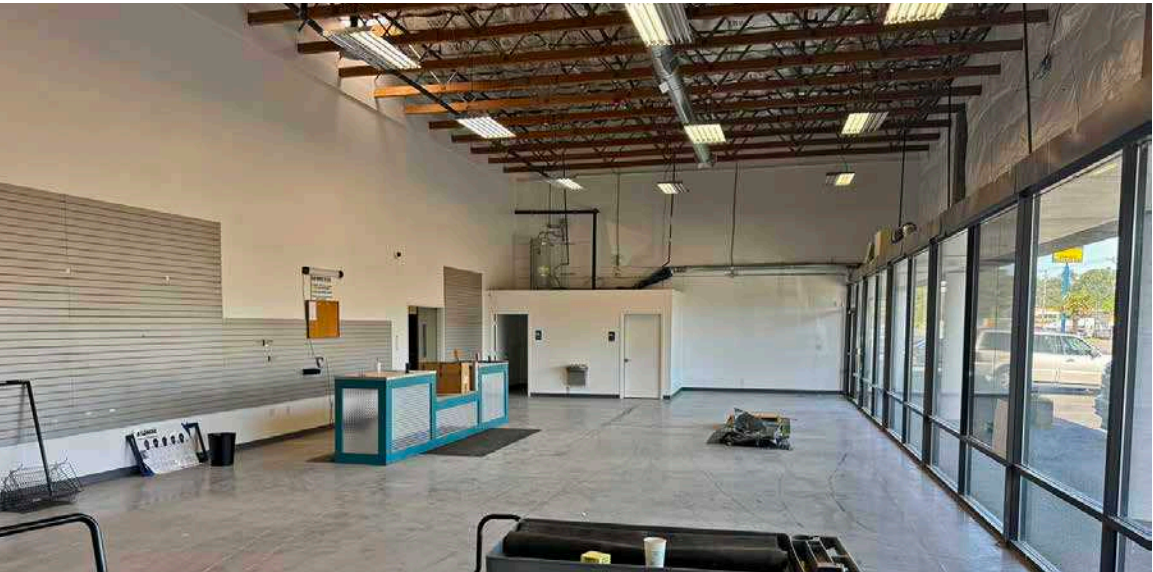


PROPERTY OVERVIEW

TOTAL SF	5,700 SF
SHOWROOM	±2,850 SF
WAREHOUSE	±2,850 SF
STORAGE	Existing H2 room
GRADE DOORS	2 (one oversized)
DOCK DOORS	2
CLEAR HEIGHT	18'
MONTHLY RATE	\$5,700/month + NNN
NNN (PSF/MO.)	\$1,100/month
ZONING MUNICIPALITY	City of Fife → ZONING MAP → ZONING USE
NOTES	<ul style="list-style-type: none"> • Master lease expires 5/18/25 • Direct deal with Landlord possible

KIDDER.COM

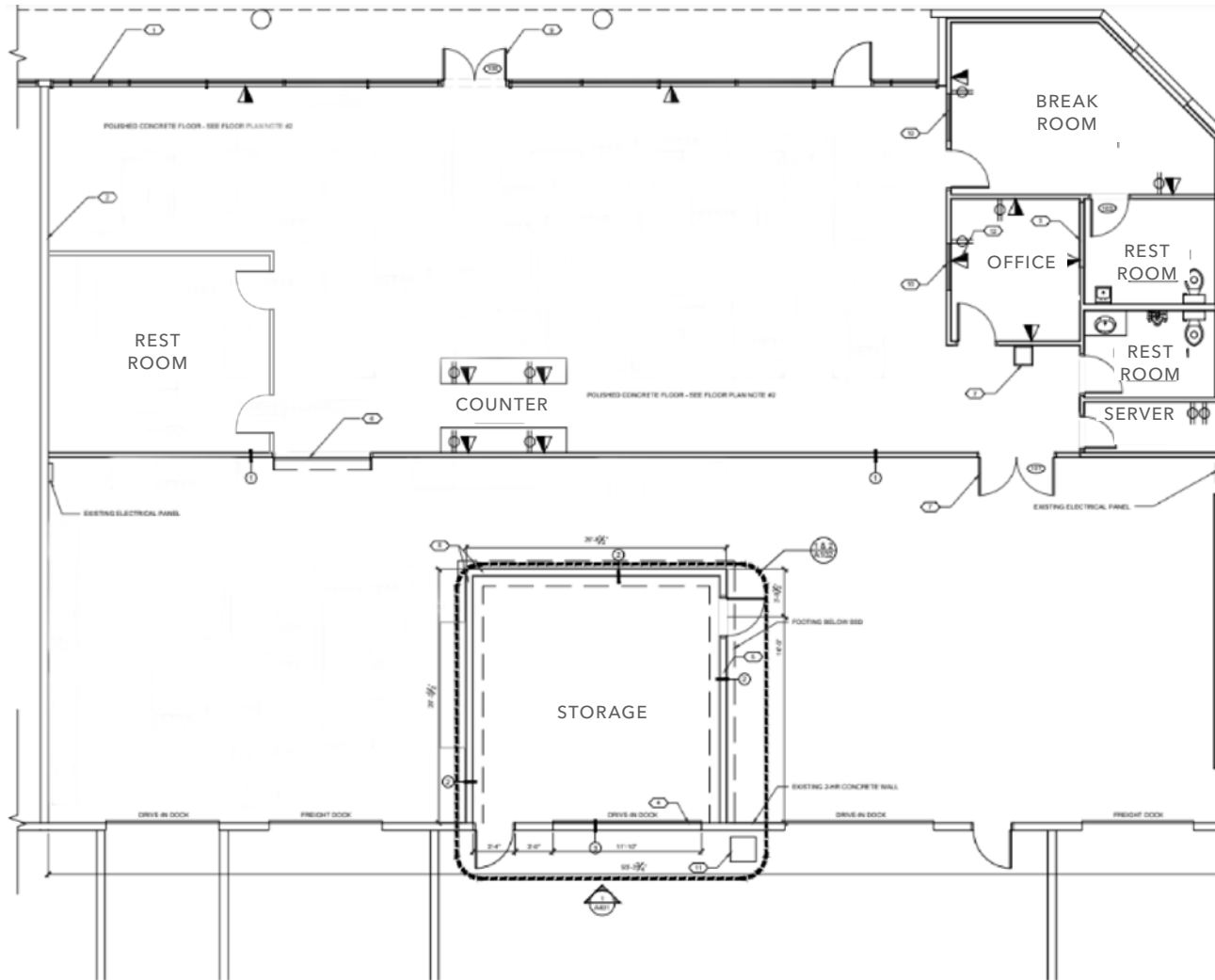
This information supplied herein is from sources we deem reliable. It is provided without any representation, warranty, or guarantee, expressed or implied as to its accuracy. Prospective Buyer or Tenant should conduct an independent investigation and verification of all matters deemed to be material, including, but not limited to, statements of income and expenses. Consult your attorney, accountant, or other professional advisor.



KIDDER.COM

This information supplied herein is from sources we deem reliable. It is provided without any representation, warranty, or guarantee, expressed or implied as to its accuracy. Prospective Buyer or Tenant should conduct an independent investigation and verification of all matters deemed to be material, including, but not limited to, statements of income and expenses. Consult your attorney, accountant, or other professional advisor.

FLOOR PLAN



3 MIN

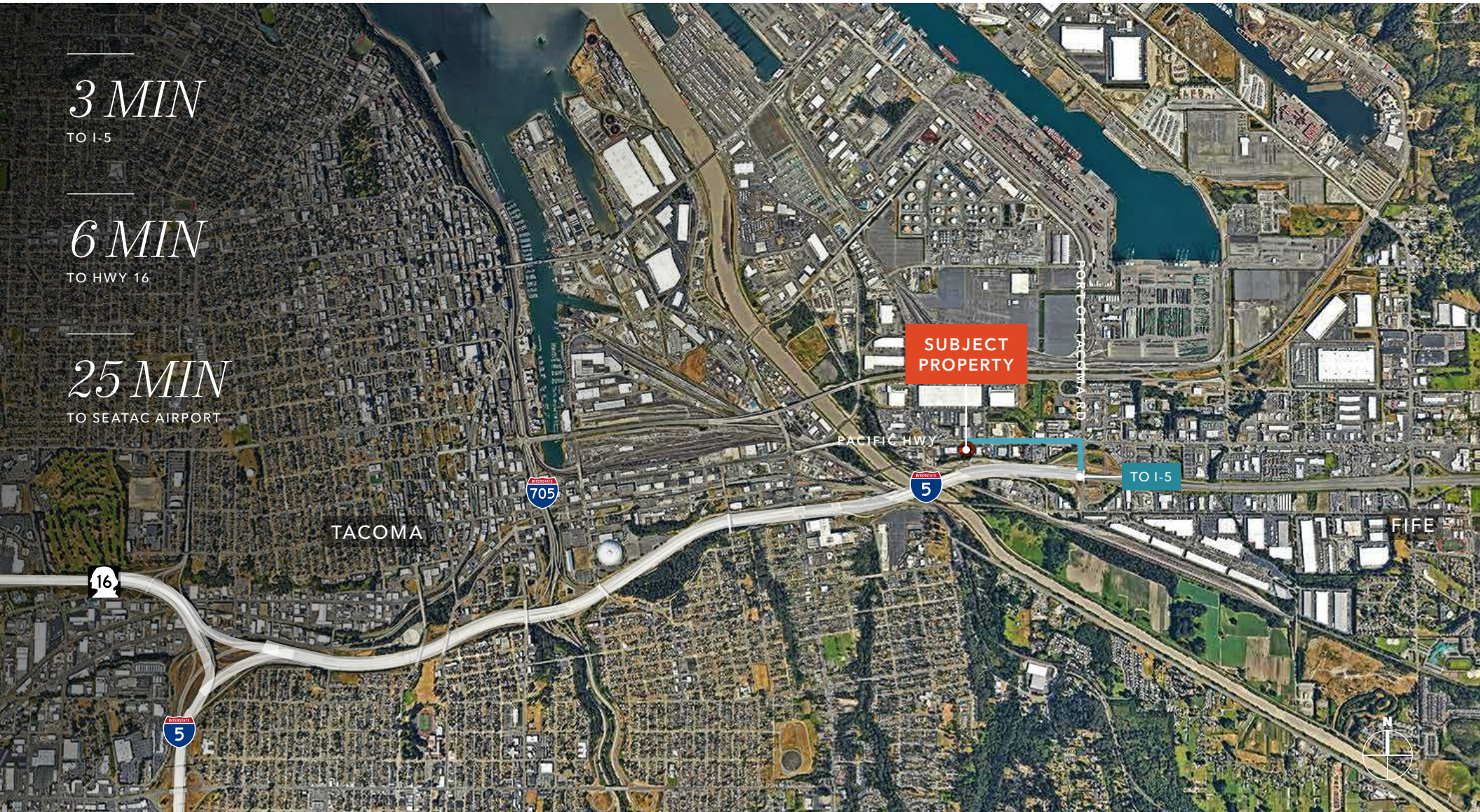
TO I-5

6 MIN

TO HWY 16

25 MIN

TO SEATAC AIRPORT



KIDDER.COM

This information supplied herein is from sources we deem reliable. It is provided without any representation, warranty, or guarantee, expressed or implied as to its accuracy. Prospective Buyer or Tenant should conduct an independent investigation and verification of all matters deemed to be material, including, but not limited to, statements of income and expenses. Consult your attorney, accountant, or other professional advisor.