

**\$2.00/SF/Yr**  
commission for  
any new deal  
signed!

# THE A.E. DOYLE BUILDING

119 PINE ST, SEATTLE, WA 98101



# THE A.E. DOYLE BUILDING



## Property Highlights

- Full Floor Opportunity
- Divisibility Options
- Furniture Available
- Secure Garage & Bike parking
- Renovated Restrooms, Building Showers and Common Area

*This 4-story historic landmark built in 1919 features character-rich details with an airy and bright updated office and retail spaces*



**NEWMARK**

**CAVAN O'KEEFE**  
206.395.2903  
cavan.okeefe@nrmk.com

**TRACY TURNURE**  
425.372.9923  
tracy.turnure@nrmk.com

# THE A.E. DOYLE BUILDING

## Availabilities

### Full Floor Options:

<b>Floor 2</b>	▶ 8,825 RSF	Rare full floor availability with new finishes and potential furniture.
----------------	-------------	---

### Floor 2 Demising Options:

<b>Suite 200</b>	2,496 RSF	Open space with three private and a conference room
------------------	-----------	---

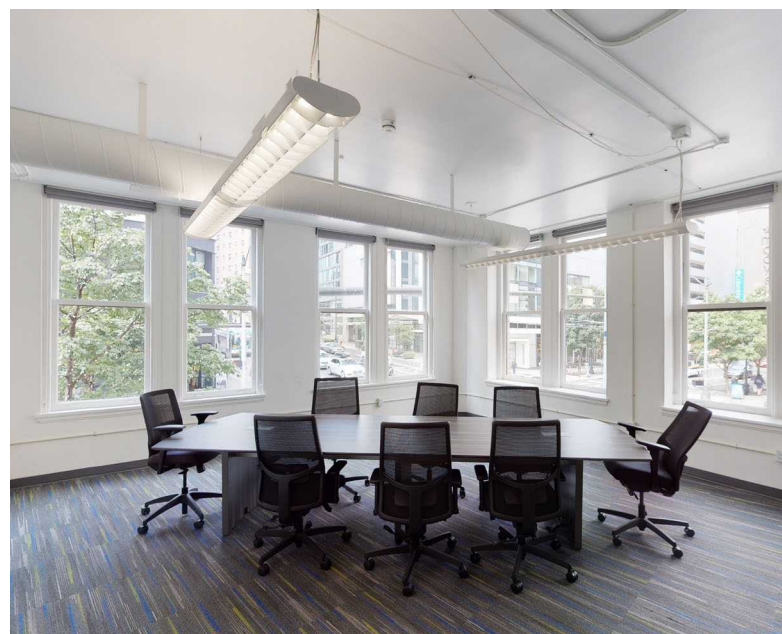
<b>Suite 210</b>	4,790 RSF	Large open space with two private offices and a kitchenette
------------------	-----------	---

<b>Suite 225</b>	1,550 RSF	Open space with two offices and a kitchenette
------------------	-----------	---

### Floor 3 Options:

<b>Suite 300</b>	▶ 1,460 RSF	Heavy private office build out with reception
------------------	-------------	---

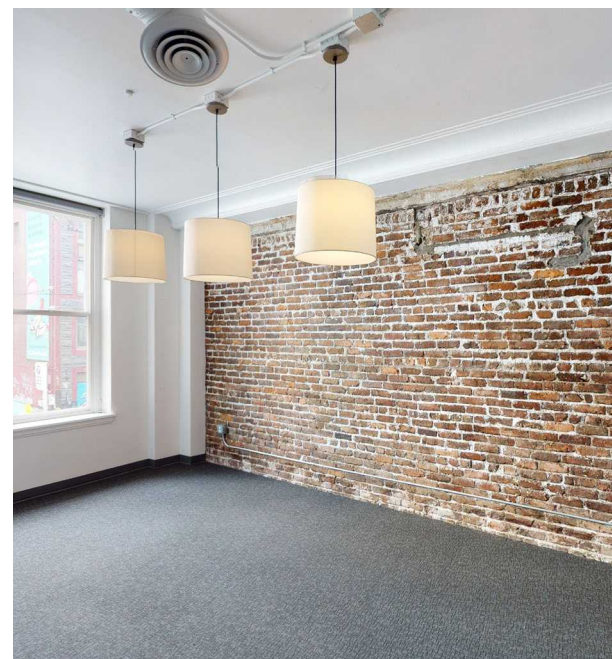
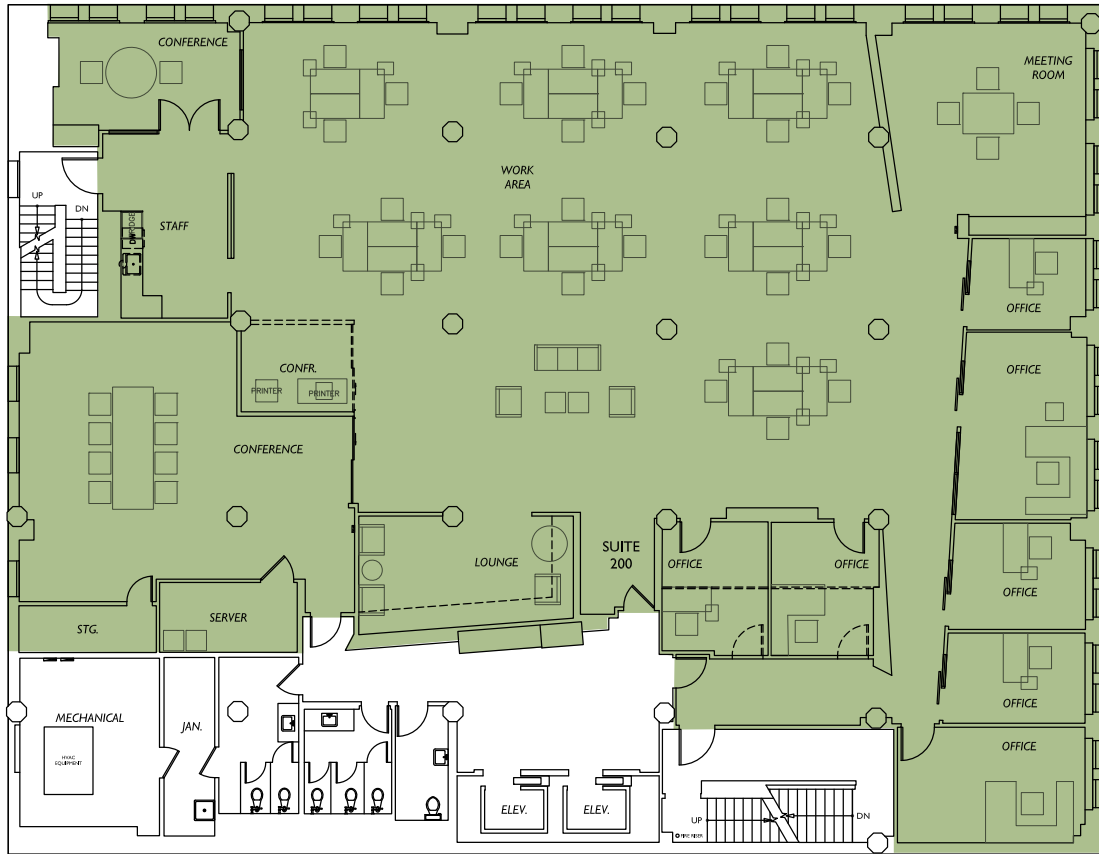
<b>Suite 301</b>	4,026 RSF	High ceilings, private offices, conference room, kitchen, and open work space
------------------	-----------	---



# Full Floor 2

8,825 RSF

THE  
**A.E. DOYLE**  
BUILDING



**NEWMARK**




**CAVAN O'KEEFE**  
206.395.2903  
cavan.okeefe@nrmk.com

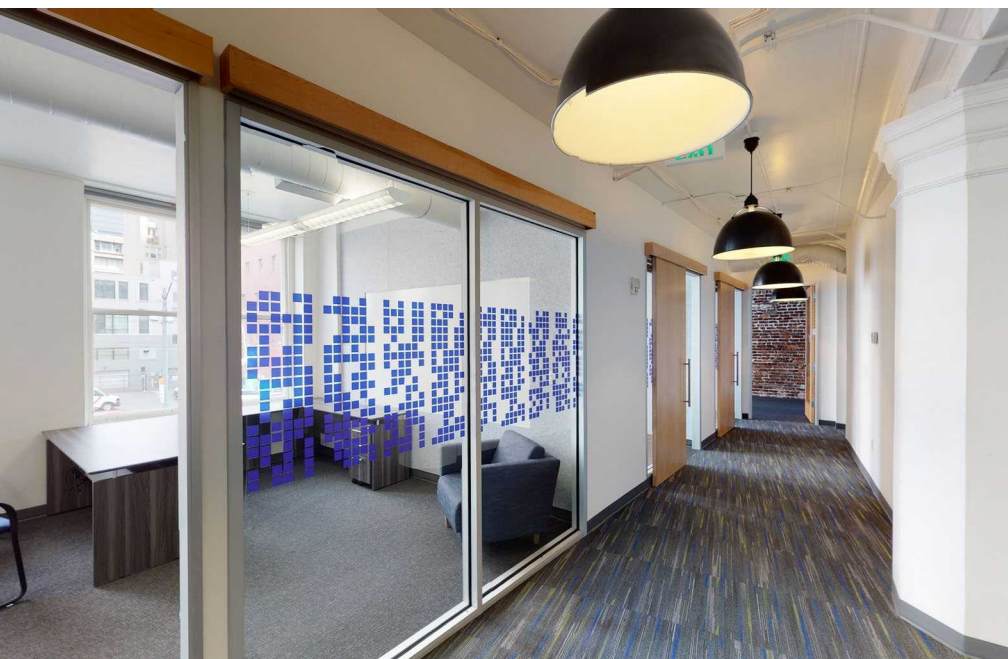
**TRACY TURNURE**  
425.372.9923  
tracy.turnure@nrmk.com

# Floor 2

8,836 RSF

THE  
**A.E. DOYLE**  
BUILDING

-  Suite 225  
1,550 RSF
-  Suite 210  
4,790 RSF
-  Suite 200  
2,496 RSF



**NEWMARK**

**CAVAN O'KEEFE**  
206.395.2903  
cavan.okeefe@nrmk.com

**TRACY TURNURE**  
425.372.9923  
tracy.turnure@nrmk.com

# Floor 3

1,460 RSF

THE  
**A.E. DOYLE**  
BUILDING

 **Suite 300**  
1,460 RSF 

 **Suite 301**  
4,026 RSF



**NEWMARK**

**CAVAN O'KEEFE**  
206.395.2903  
cavan.okeefe@nrmk.com

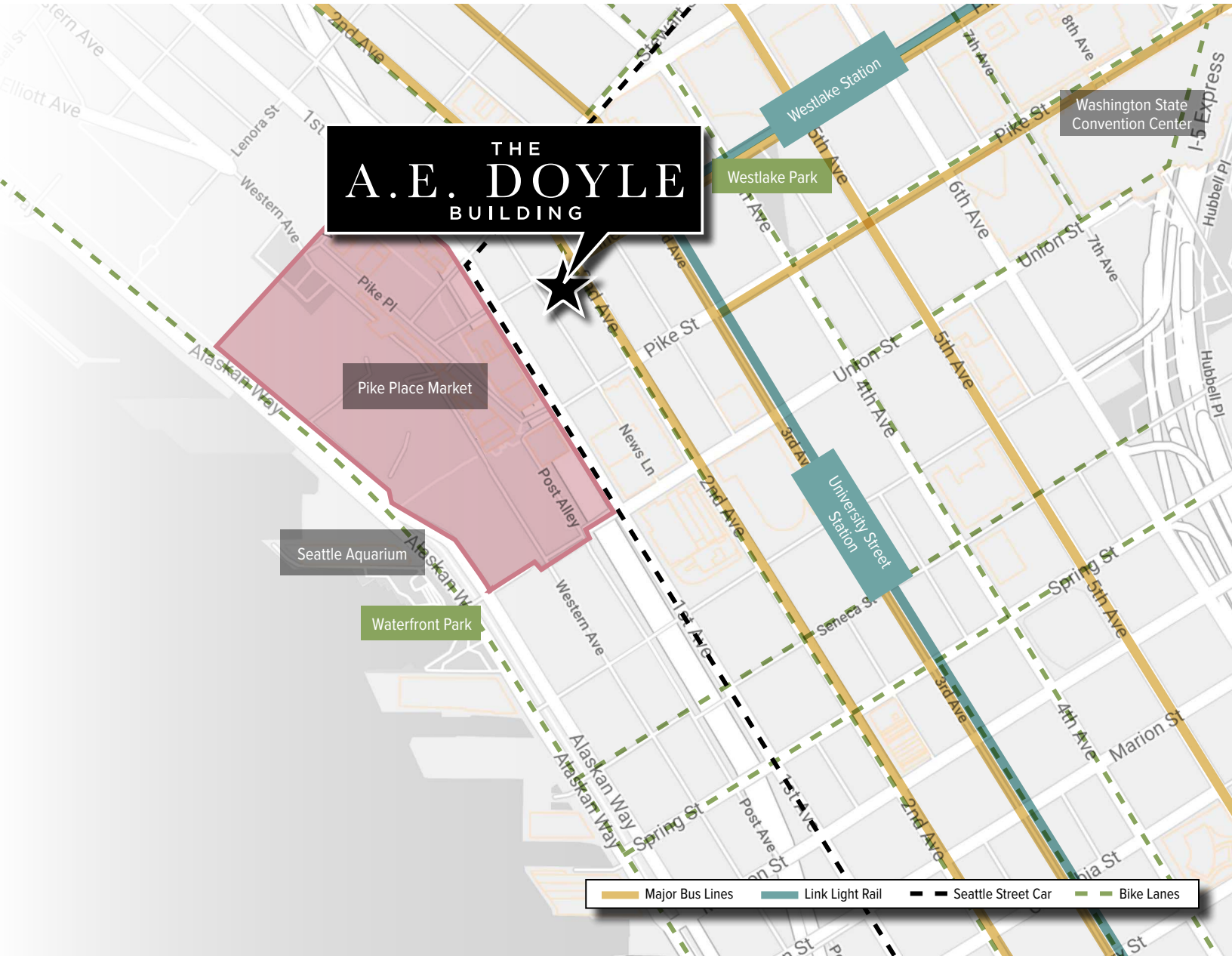
**TRACY TURNURE**  
425.372.9923  
tracy.turnure@nrmk.com

MORE THAN  
**50**  
RESTAURANTS  
within 3 blocks

MORE THAN  
**10**  
COFFEE SHOPS  
within 3 blocks

WALKER'S  
PARADISE  
**99**

RIDER'S  
PARADISE  
**100**



## Neighborhood / Market Summary

- Steps away from Amazon, 2200 Westlake (Whole Foods) and the downtown retail core
- Access to the South Lake Union Transit, Link Light Rail and main line buses within blocks
- Direct access to Pike Place Market

# THE A.E. DOYLE BUILDING



HERE,  
MEMBERS  
COME  
FIRST.

All Washington State  
residents are eligible  
to join.

**CAVAN O'KEEFE**  
206.395.2903  
cavan.okeefe@nrmk.com

**TRACY TURNURE**  
425.372.9923  
tracy.turnure@nrmk.com

**NEWMARK**

The distributor of this communication is performing acts for which a real estate license is required. The information contained herein has been obtained from sources deemed reliable but has not been verified and no guarantee, warranty or representation, either express or implied, is made with respect to such information. Terms of sale or lease and availability are subject to change or withdrawal without notice. 18-1023