

Tri-Cities Kennewick Plaza

Future Pad Site

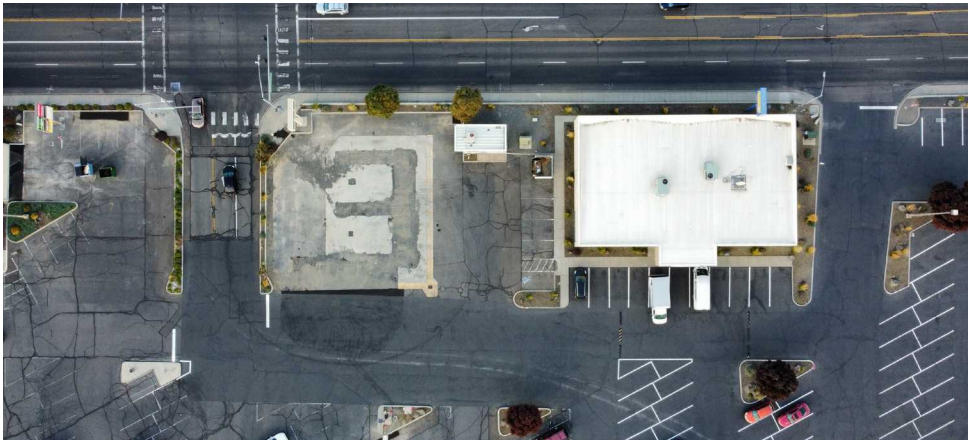
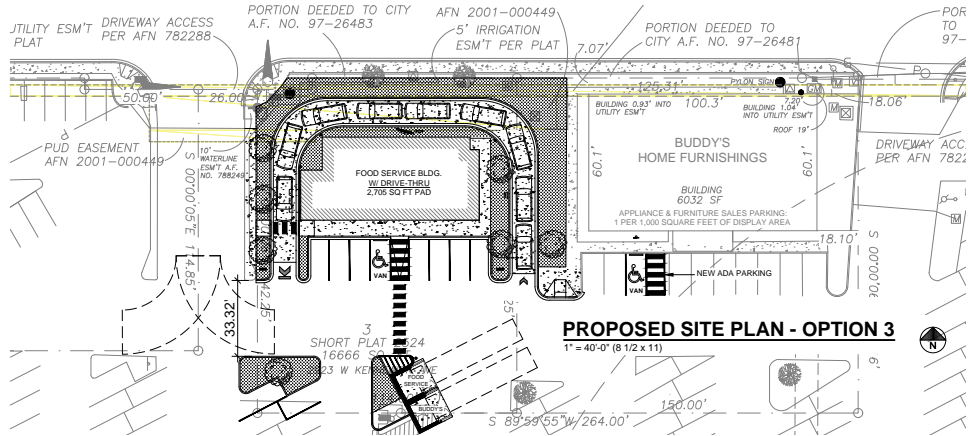
Address:
2923 W. Kennewick Ave
Kennewick WA

Size:
± .25 acres (can
accommodate a 2,500sf
building with drive thru)

Deal Structure:
Ground Lease, Build to Suit

Asking Rate:
Contact Broker

NNN:
\$5.85 PSF (2024)



Yohar Renaud | Vice President | C +1 425 214 3001 | yohar.renaud@cbre.com
Kyle Herting | Vice President | C +1 253 241 0876 | kyle.herting@cbre.com

CBRE